

Christmas Carol 3708

Purpose - **Table runner**

Weave - **Pointed twill**

Shafts - **4-shaft**

Yarns - **Merc. Cotton, Linen**

Level ●●●

Weaving Library
*The Weaver's
Pick*



@mallikerta



mallikerta



@mallikerta

Table runner

Finished size in width 21 cm

Christmas Carol 3708

THREADING AS A MELODY

Three different colour threads are always in the same order in the threading, but it varies on which shaft they settle. Dark lilac, dark red and bright red threads rise up and lower down in the threading draft as tunes of melodies in a musical notation.

Pattern on the fabric seems to be complicated at the first sight, but it is woven only with four shaft and four treadles. For only the different colours forms the lines of the pattern, it is important that the warp ends are sett closely enough. The density of the warp is 15 threads/cm and in each dent isthree different colour thread. The reed is number 50/10 (there is 50 dents per 10 cm).

INSTRUCTIONS FOR WINDING THE WARP

The edges are wound with two threads and the middle with three threads at a time.

6 x 1 thread red (843) + 1 thread dark red (848)
= 12 threads

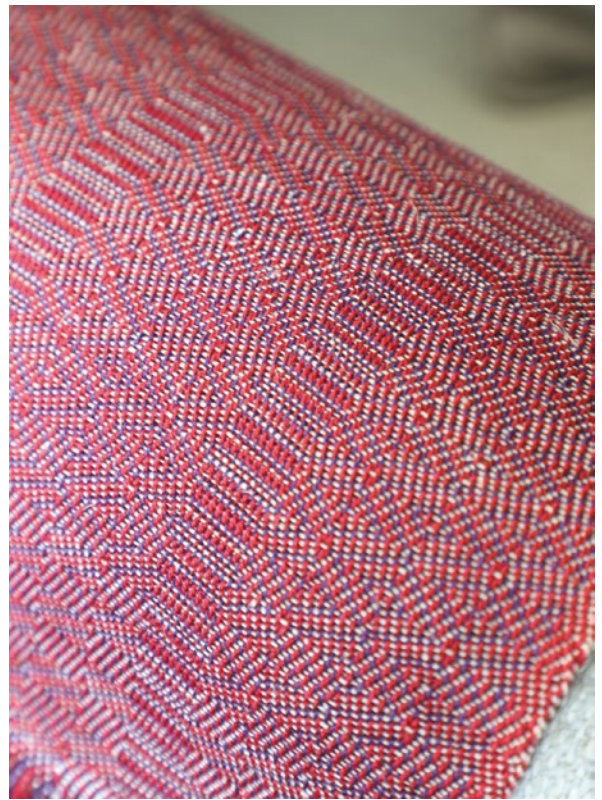
106 x 1 thread dark lilac (896) + 1 thread red + 1 dark red
= 318 threads

1 thread dark lilac

6 x 1 thread red + 1 thread dark red
= 12 threads

343 threads in total – 1 thread * = 342 (In threading leave the last warp end out of the heddle and out from the work for equalizing the thread count in the dents.)

342 includes double edge threads. ▶



SUITABLE ALSO AS A DECORATION FABRIC

We weaved at the end of this warp a sample with unbleached linen weft. The colour structure expanded in the sparkling lines to multiple directions. We think this fabric would be a good choice as an upholstery fabric for chairs and sofas. You can also weave smart cushion covers to your home or as a present. Hope we would have had a longer warp! This fabric is so beautiful.

The warp Eko Mercerised Cotton 8/2, tex 74x 2 ,
1 kg = n. 6800 m, Garnhuset i Kinna

Warp width 22,6 cm
density 15 lankaa/cm
number of warp ends 340 + 2
length 3,8 m

Reed 50/3 (= three threads in one dent)
Weave Pointed twill

The weft Eko Mercerised Cotton 8/2,
Tow linen 8/1 or
Line linen 16/2

AMOUNT OF WARP YARN NEEDED

Eko Mercerised Cotton 8/2, tex 74x 2 (1 kg = n. 6800 m)

Garnhuset I Kinna

843 red 67 g

848 dark red 67 g

896 dark lilac 60 g

194 g in total

Long cotton table runner

Finished size 22,5 x 120 cm

Weave the table runner with the red mercerised cotton 8/2 yarn according to the treadling instructions. The woven length is 135 cm. The density of the weave is 10 threads/1 cm.

AMOUNT OF WEFT YARN NEEDED

Eko Mercerised Cotton 8/2, tex 74x 2 (1 kg = n. 6800 m)

843 red 50 g

Linen table runners

Finished size 22,5 x 61 cm

Weave the table runner with linen yarn according to the treadling instructions. The woven length is 71 cm. The density of the weave is 8 threads/cm.

AMOUNT OF WEFT YARN NEEDED

for the red runner

Tow linen 8/1, tex 206

red 26 g

AMOUNT OF WEFT YARN NEEDED

for a lilac runner

Line linen 16/2, tex 103x2

dark lilac 25 g



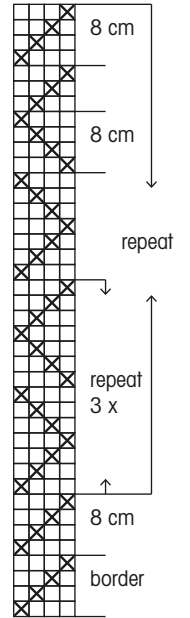
FINISHING

Sew the ends with 3-step zigzag stitches. Sew the borders by hand, the width of the finished border is 1,2 cm. ●

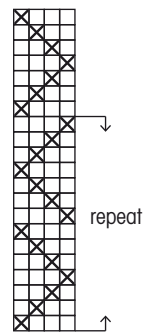


End of the table runner + weave the border

LONG COTTON TABLE RUNNER



LINEN TABLE RUNNERS

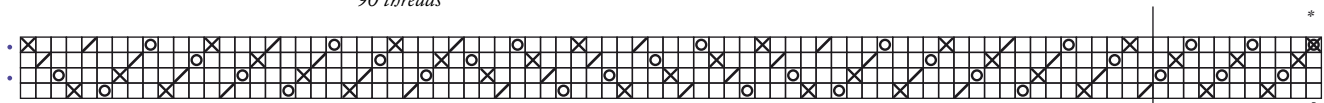


Threading:

- × = dark red
- = red
- / = dark lilach

- ⊠ * double the edge thread
- = floating selvages

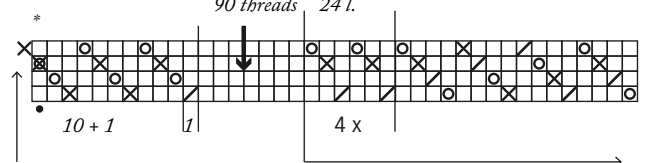
Sequence A
90 threads



2 x
2 x 114 = 228 threads

340 + 2 threads in total

Sequence A Sequence B
90 threads 24 l.



Take the last warp end out of the work, see instructions for winding the warp.

mallikerta - The Weaver's Pick

Vanhamaantie 3-5 A6, 47200 ELIMÄKI, FINLAND
E-mail toimitus@mallikerta.fi Puh. +358 40 170 2007

► The commercial use of the weaving patterns and the sharing of designs online is forbidden. All contents of The Weaver's Pick are copyrighted by Mallikerta MH.