

www.theweaverspick.com
www.mallikerta.fi

© *mallikerta*

The Weaver's Pick
Spring 1/2020

Your Own Path 3710

Purpose - **Scarf**

Weave - **Plain weave and rep**

Shafts - **4-shaft**

Material - **Linen, wool**

Level ●●●

Weaving Library
*The Weaver's
Pick*



@mallikerta



mallikerta



@mallikerta

© *mallikerta*

A linen scarf

Finished size 36 x 158 + fringes

Your Own Path 3710

Easy pattern for inlaying!

A skyblue scarf reminds of winds of the spring, fresh and clear. The scarf is woven with a plied linen yarn. You need only two tiny spools of plied linen yarn for one scarf and a small amount of wool or wool roving for the pattern weft. Those who are interested in spinning can spin the pattern weft themselves!

The warp Linen 16/2, tex 103x2, 1 kg = n. 4900 m
Warp width 40 cm
density 5 threads/cm
number of warp ends 200
length 2,3 m

Reed 50/1
Weave Plain weave and rep

INSTRUCTIONS FOR WINDING THE WARP

24 threads light blue

76 x $\left\{ \begin{array}{l} 1 \text{ thread light blue} \\ 1 \text{ thread blue} \end{array} \right.$

24 threads blue

200 threads in total

AMOUNT OF WARP YARN NEEDED, length 2,3 m

Linen 16/2, tex 103x2, 1 kg = n. 4900 m, Garnhuset i Kinna
(or Lappajärven Värjäämö)

79 light blue 48 g

80 blue 48 g

96 g in total





Tip!

Weave the pattern with different colours and blend out the borders in an ombré fashion.

The narrow inlay patterns in the scarf are woven with soft wool. We spun the pattern weft, but you can also use wool roving or soft wool yarn. By mixing different colours you will get the perfect colour that fits the warp. The pattern weft can be soft and bulky.

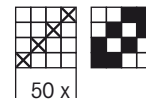
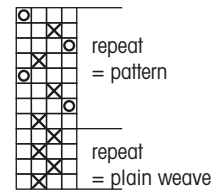


AMOUNT OF WEFT YARN NEEDED FOR ONE SCARF

Linen 16/2, tex 103x2, 1 kg = n. 4900 m,
 Garnhuset i Kinna (or Lappajärven Värjäämö)
 79 light blue 25 g
 80 blue 24 g
 49 g in total

Treadingling

× = linen yarn
 ○ = wool



WEAVING INSTRUCTIONS

The density of the weave is only 4 threads/cm. Don't beat in too closely! Leave around 15 cm of the warp at each end of the scarf for the fringe. The woven length is 179 cm.

Weave 91 cm with light blue 2-plyed linen yarn and the rest of the scarf with blue yarn. Use two outmost treadles for the pattern. Throw one plain weave weft between the pattern wefts. Turn the pattern weft ends back in the shed as usual or insert with needle into to the pattern after the cloth is taken off the loom.

Linen warp threads stir easily when rolled on the cloth beam. Place corrugated cardboard between the layers of the warp to prevent movement.

THE PATTERN WEFT

Spin the wool yarn for the pattern or weave with wool roving or soft wool yarn. Thickness of the pattern yarn is suitable when it fills the space between the two background plain weave wefts. The pattern weft stays tightly between wefts and warp ends even if it is loose and soft.

Weave narrow and long freehand inlay patterns on the surface. Design the patterns and sketch them on paper. Felt or press the fabric while it is still damp to fasten the pattern.

FINISHING

Make a twisted fringe with 2 + 2 warp threads. The length of the finished fringe is 8 cm. Felt the pattern areas or just press with an iron through a damp cloth.



The width of pattern stripes is 1,5 - 3 cm. Draw pattern lines on paper and measure the starting points. You don't have to follow the design precisely, but with it you get patterns evenly throughout the scarf.



Finishing with felting or pressing with iron

Felt the soft pattern weft to fasten it in the plain weave background.

1. Cover the table with a piece of plastic.
 2. Stretch the scarf on a bambu curtain. Moisten the other end of the scarf with soap wather. Cover with bubble wrap.
 3. Roll with the bambu curtain as in the picture.
- Felt the other end of the scarf in a similar way.
4. Rinse with plenty of water. Press the fabric through an ironing cloth while it is still slightly damp.

Instead of felting you can also just iron the scarf. Press the scarf through the damp ironing cloth twice. Let the scarf cool down between the ironing.