

Large shapes 3713

Purpose - **Home textiles** Weave - **Overshot** Shafts - **4-shaft, 6 treadles** Yarns - **Poppana, Velvet** Level ●●●

Weaving Library
*The Weaver's
Pick*



@mallikerta



mallikerta



@mallikerta

A warp for pillow cases
 Finished size 35 x 35 cm

Large shapes 3713



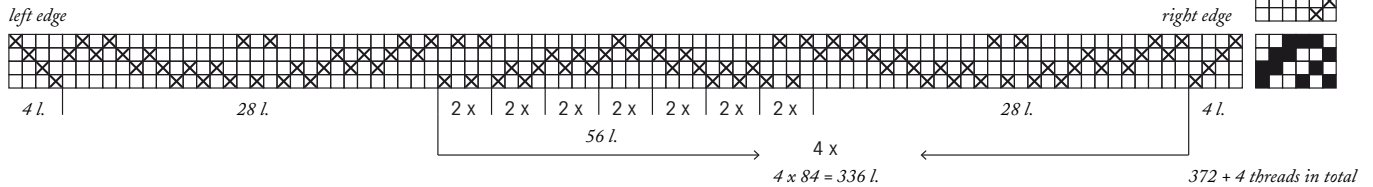
The warp	6-ply black cotton twine, tex 30x6, 1 kg = n. 5300 m
Warp	width 74,4 cm density 5 threads/cm number of warp ends 372+4 threads length 10 m amount of yarn needed 710 g
Reed	50/1
Weave	Overshot
Wefts	Background weft Poppana Pattern weft Chenille yarn, doubled

In this wide warp you can weave pillow cases for small as well as large pillows. Weave a piece as high the pillow for a small pillow and fold it in half and for a large pillow a piece twice high as the pillow. In the threading there are four large units and between those smaller motifs. The longest float of a pattern weft is 2 cm. Weave the background with poppana or narrow cotton strips. Use Chenille Yarn doubled or similar thicker cotton yarn as the pattern weft.

© mallikerta

Treading:
 X = Poppana (= background weft)
 O = Chenille yarn, doubled (= pattern weft)

The two outmost warp ends are doubled.



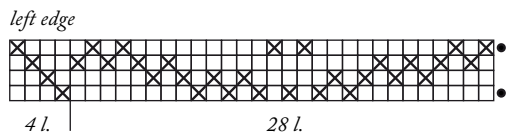
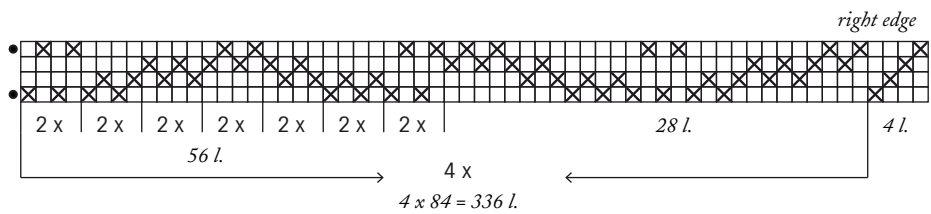
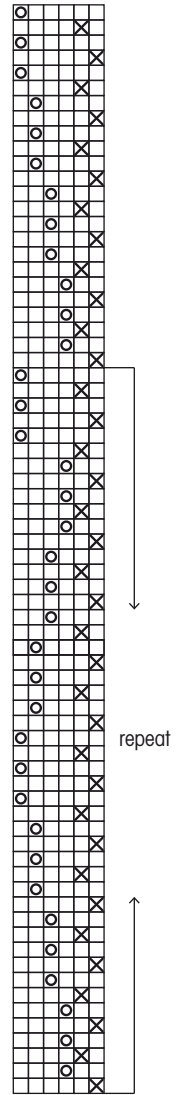


Vary the pattern with different treadlings

Light blue background and grayish green pattern

Treadling:
 X = Poppana (= background weft)
 o = Chenille yarn (= pattern weft)

The two outmost warp ends are doubled.



WEAVING INSTRUCTIONS

Weave the pillow cases according to the treading instructions. Use poppana for the background weft and chenille yarn doubled for the weft pattern.

The density of weave is approx. 4 poppana + 4 chenille yarn doubled/cm. The woven length of one pillow case is approx. 37 cm. Start and finish by weavin a few shots of cotton twine or similar strength cotton yarn. Weave 1 cm of plain weave with poppana at both ends. If you want to secure the warp ends with knots, leave around 6 cm of the warp for the fringe.

AMOUNT OF WEFT YARN NEEDED FOR 1 PILLOW CASE

Poppana approx. 130 g

Chenille yarn, doubled approx. 160 g

The width of poppan 10 mm. Chenille yarn tex 750,

1 kg = n. 1300 m tai tex 555, 1 kg = n. 1900 m.

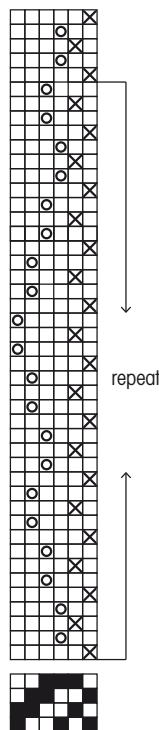
FINISHING

Sew the ends with 3-step zigzag stitches twice. If you left the warp for fringes, tie the warp threads with tight weaver's knots. Steam the fabric. Fold the fabric in half right sides in and sew the upper and bottom seams. Insert the pillow and sew the open edge by hand using strong botton thread or 6-ply cotton twine.

Green background and light green pattern

Treading:

- × Poppana (= background weft)
- Chenille yarn, doubled (= pattern weft)



Blue background and grayish lilac pattern

Treading:

- × Poppana (= background weft)
- Chenille yarn, doubled (= pattern weft)

