

www.theweaverspick.com
www.mallikerta.fi

© mallikerta

A Folk school weave 3715

The Weaver's Pick
Spring 1/2020

Purpose - **Table runners, towels** Weave - **Twill** Shafts - **4-shaft** Yarns - **Cottolin, Cotton, Linen** Level ●●●

Weaving Library
*The Weaver's
Pick*



@mallikerta



mallikerta



@mallikerta

3715

A Folk school weave

Kati Peltonen designed a striped warp for weaving course at Inkeroinen Folk High School. Weavers of the course have woven it with several different weighted and coloured yarns. The length of the warp was 35 m!

INSTRUCTIONS FOR WINDING THE WARP

62 threads dark blue

2 threads sand

4" dark blue

4" sand

4" dark blue

4" sand

4" dark blue

8 threads sand

4" dark blue

8" sand

4" dark blue

8" sand

4 lankaa ¼-bleached

8" sand

4" ¼-bleached

8" sand

4" ¼-bleached

4" sand

4" ¼-bleached

4" sand

4" ¼-bleached

2" sand

130 threads ¼-bleached = *the middle*

Wind the other edge of the warp as a mirror image.

454 threads in total

AMOUNT OF WARP YARN NEEDED, length 10 m

Bockens Cottolin 22/2, tex 80x2, 1 kg = n. 6400 m

2000 ¼-bleached 275 g

2031 dark blue 265 g

2049 sand 195 g

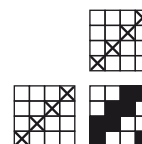


*Wind a striped warp for
sauna textiles, towels and table runners*

The warp Cottolin 22/2, tex 80x2,
Bockens, 1 kg = n. 6400 m

Warp width 50 cm
density 9 threads/cm
number of yarn ends 454

Reed 45/2
Weave Batavia twill



© mallikerta

The long sauna seat cover

Finished size 50 x 147 cm
The woven length 1,65 m
Density of the weave 9 threads/cm.

AMOUNT OF WEFT YARN NEEDED for 1 cover

Tow linen 8/1, tex 206, 1 kg = n. 5600 m
light gray 144 g
+ few grammes some thick unbleached tow linen yarn

WEAVING INSTRUCTIONS

30 cm light gray
2 shots of unbleached tow linen 4 or handspun linen yarn
26 cm light gray
2 shots of unbleached } 4 x
30 cm light gray

The small seat cover, blue

Finished size 50 x 45 cm
The woven length 57 cm
Density of the weave 9 threads/cm.

AMOUNT OF WEFT YARN NEEDED for 1 cover

Tow linen 8/1, tex 206, Bockens, 1 kg = n. 5600 m
731 blue 50 g

The small seat cover, white

Finished size 50 x 45 cm
The woven length 57 cm
Density of the weave 9 threads/cm.

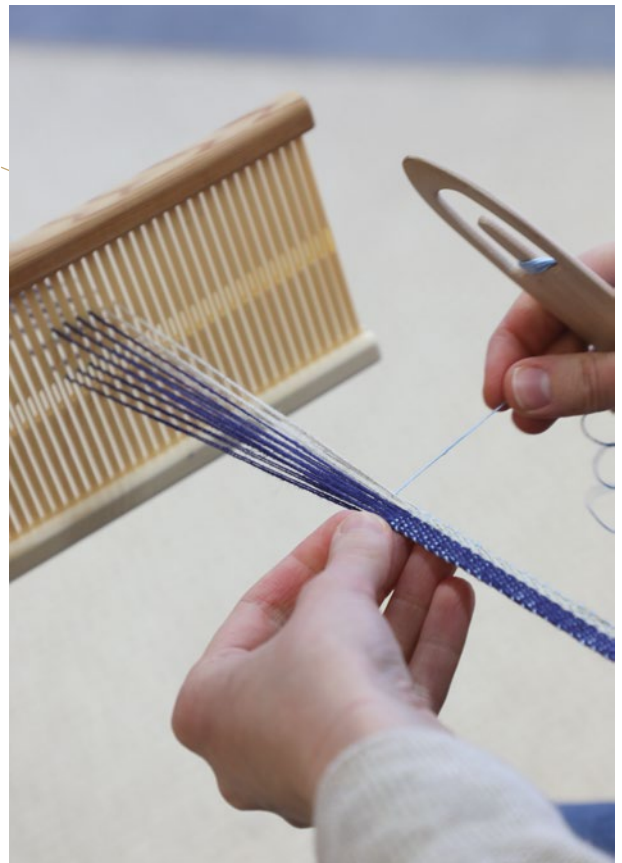
AMOUNT OF WEFT YARN NEEDED for 1 cover

Linen 8/1, tex 206, 1 kg = n. 5120 m
½-bleached 55 g

FINISHING

Sew the towel ends with 3-step zigzag stitches. Sew the borders by hand using strong yarn. Press. Washing according to the washing instruction for the yarn you used, 40 – 60°C.

This pattern is perfect for a multipurpose warp with many weavers. Several different strength cotton and linen cotton yarns are suitable for the weft. Warp has colours which adapt well with light and dark wefts and the shade can be neutral or bright.



Hanging loops

Weave a band for the hanging loops using a rigid heddle loom. Warp the loom with the same yarns you have in the woven cloth. Finished width of the band is 1,5 cm and the length woven for one loop is 15 cm.

THREADING ORDER

18 threads white/dark blue
8 threads sand
Use doubled!

The weft is white linen yarn in the white band and light blue in the dark blue band.





mallikerta - The Weaver's Pick

Vanhamaantie 3-5 A6, 47200 ELIMÄKI, FINLAND
E-mail toimitus@mallikerta.fi Puh. +358 40 170 2007

▶ The commercial use of the weaving patterns and the sharing of designs online is forbidden. All contents of The Weaver's Pick are copyrighted by Mallikerta MH.