

# Crystal Star 3718

© mallikerta

Purpose - Towels

Weave - Crepe weave

Shafts - 8-shaft

Material - Cottolin

Level ●●●

Weaving Library  
*The Weaver's  
Pick*



@mallikerta



mallikerta



@mallikerta

*Hand Towels*

*Finished size 40 x 45 cm*

*Strawberry Star table runner*

*page 15*

## *Crystal Star 3718*

The warp 22/2 Bomull Lin (= Cottolin), tex 76x2,  
1 kg = approx. 6400 m, Garnhuset i Kinna  
Warp width 44 cm  
density 10 threads/cm  
amount of warp ends 440  
length 5,8 m

Reed 50/2  
Weave Crepe weave (Crystal crepe in Finnish),  
color-and-weave effect

### INSTRUCTIONS FOR WINDING THE WARP

40 threads bleached white

8 " dark red

96 " bleached

8 " pink

8 " bleached

8 " pink

8 " bleached

8 " red

8 " bleached

8 " red

8 " bleached

8 " dark red

8 " bleached = *the middle*

Wind the other edge of the warp as a mirror image.

### AMOUNT OF WARP YARN NEEDED, length 5,8 m

22/2 Bomull Lin (= Cottolin), tex 76x2, 1 kg = 6400 m

bleached white 295 g

2240 dark red 29 g

2210 pink 29 g

2242 red 29 g

382 g in total ▶

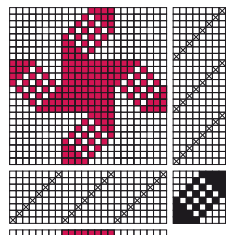
### A NEW PATTERN WITH SMALL CHANGES IN THE TIE-UP

Weaves with straightforward threading are easy to change with a tie-up. We decided to change some cords in the tie-up while weaving. We had three different patterns in this same warp.

#### TIE-UP 1

##### *Star*

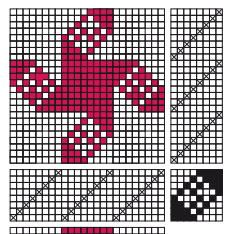
Threading and treadling:  
□ = white thread  
■ = red thread



#### TIE-UP 2

##### *Lace*

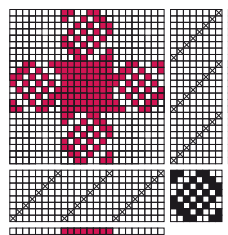
Threading and treadling:  
□ = white thread  
■ = red thread



#### TIE-UP 3

##### *Firecracker*

Threading and treadling:  
□ = white thread  
■ = red thread





© *mallikerta*

## WEAVING INSTRUCTIONS

We wove six towels and one table runner in this same warp. Towels are woven with three different tie-ups, two towels with each one. The woven length of one towel is 56 cm. The density of the weave is 9 – 10 threads/cm. Towels have the same color order as in the warp. The colors are same in all towels, only the order of the colors has been changed.

### TIE-UP 1 - STAR -

Symmetric and balanced weave.

#### *White Hand Towel*

The woven length with the borders is 56 cm.

Weave the border with white yarn (3 repeats)

approx. 4 cm white  
 dark red stripe (1 repeat)  
 approx. 10 cm white  
 pink stripe  
 white stripe  
 pink stripe  
 white stripe  
 red stripe  
 white stripe  
 red stripe  
 white stripe  
 dark red stripe

White stripe = *the middle*

Weave the other end of the towel as a mirror image.

### AMOUNT OF WEFT YARN NEEDED for 1 hand towel

22/2 Bomull Lin (= Cottolin), tex 76x2,  
 1 kg = approx. 6400 m, Garnhuset i Kinna  
 bleached white 28 g  
 2240 dark red 3 g  
 2210 pink 3 g  
 2242 red 3 g  
 37 g in total

*Colors are same  
 in all towels,  
 only the places  
 in the stripes  
 has been  
 switched*



Tie-up 1 Star.



Tie-up 2 Lace and 3 Firecracker.

#### *Red Hand Towel*

Weave in the same way as the white towel but switch the places of bleached white and dark red 2240.

The Strawberry Stars table runner on the page 14 is woven with this tie-up 1.

### TIE-UP 2 - LACE -

Note that there are dense and sparse sections in this weave. Use a gentle beat for the sparse weft rows and firm for the dense rows. In this way you get an even density.

#### *White Hand Towel*

Weave in the same way as the white towel, Tie-up 1 - Star - *Pink Hand Towel*

Weave in the same way as the white towel but switch the places of bleached white and pink 2210.

### TIE-UP 3 - FIRECRACKER-

Even surface and interesting pattern.

#### *White Hand Towel*

Weave in the same way as the white towel, Tie-up 1 - Star - *Red Hand Towel*

Weave in the same way as the white towel but switch the places of bleached white and red 2242.

## FINISHING

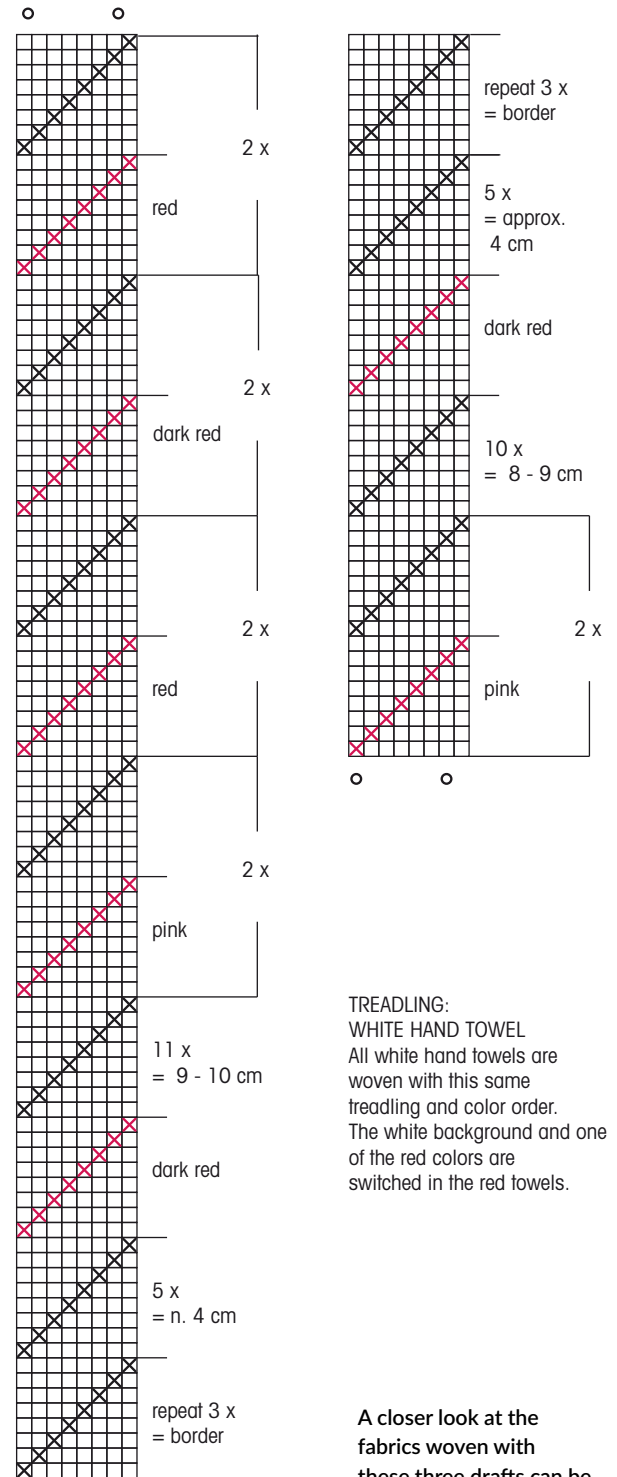
Finish the towels by sewing 3-step zigzag stitches on the ends, then you can cut the pieces apart. Press using a pressing cloth. Turn the edges under twice and sew by hand. The finished border can be one or two repeat units high. With the borders you can adjust the length of the towels. Sew the hanging loops either to the centre of the border or to the corner of the towel. If you fasten the loop to the centre, turn the cord band upwards after sewing and sew again also on the border. In this way the towel drapes nicely. ▶

## TOWEL HANGING LOOPS

We made cord with a Cord Disk 8 for the hanging loops. In the cord there are 7 threads: 6 threads in same color and 1 different color. Bind the threads with an overhand knot and press in the notches. One notch stays empty. Pass a thread over two threads in an empty notch. Continue passing threads in the same way. The finished length of one cord is 13 cm. End with an overhand knot. Use the same yarns as in the woven fabric.

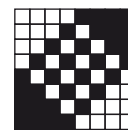
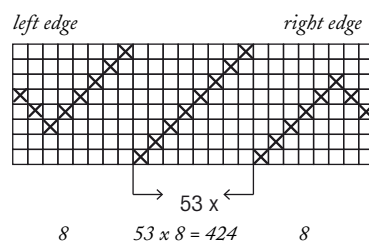


The middle of the hand towel

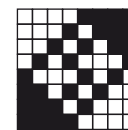


**TREADLING:**  
**WHITE HAND TOWEL**  
 All white hand towels are woven with this same treadling and color order. The white background and one of the red colors are switched in the red towels.

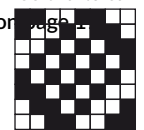
A closer look at the fabrics woven with these three drafts can be found on page 4.



STAR



LACE



FIRECRACKER

