

Strawberry Star 3719

© mallikerta

Purpose - **Table runner**

Weave - **Crepe weave**

Shafts - **8-shaft**

Material - **Cottolin**

Level ●●●

Weaving Library
*The Weaver's
Pick*



@mallikerta



mallikerta



@mallikerta

© *mallikerta*

A Table runner

Finished size 40 x 136 cm

Strawberry Star 3719

The warp 22/2 Bomull Lin (= Cottolin), tex 76x2,
1 kg = approx. 6400 m, Garnhuset i Kinna
Warp width 44 cm
density 10 threads/cm
amount of warp ends 440
length 5,8 m

Reed 50/2
Weave Crepe weave (Crystal crepe in Finnish)
color-and-weave effect

Woven in the same warp as Crystal Star hand towels. In-
structions for winding the warp and amount of warp yarn
needed are on the page 11.



WEAVING INSTRUCTIONS

Weave the runner according to the treadling instructions using bleached white and dark red cottolin 22/2. The density of the weave is approx. 10 threads/cm.

Stripes

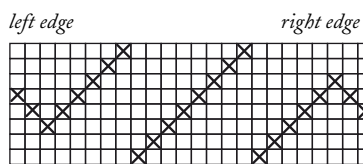
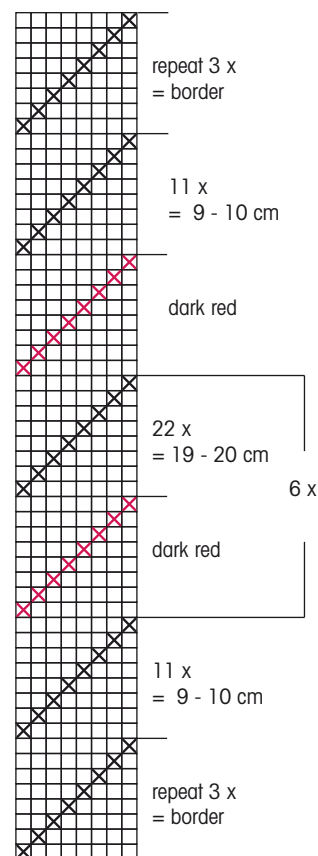
Border bleached white (3 repeats)
approx. 10 cm bleached white
dark red stripe
approx. 20 cm bleached white } repeat 6 x
dark red stripe
approx. 10 cm bleached white
border bleached white (3 kuviota)
155 cm in total

AMOUNT OF WARP YARN NEEDED

22/2 Bomull Lin (= Cottolin), tex 76x2, 1 kg = 6400 m,
bleached white 90 g
2240 dark red 5 g

FINISHING

Sew 3-step zigzag stitches on the ends and then cut the pieces
apart. Press the cloth. Sew the borders by hand, the width of the
finished border is two repeat units in treadling. ●



8 53 x 8 = 424 8 440 threads in total



Wishing you fun moments with our designs!

mallikerta - The Weaver's Pick

Vanhamaantie 3-5 A6, 47200 ELIMÄKI, FINLAND
E-mail toimitus@mallikerta.fi Puh. +358 40 170 2007

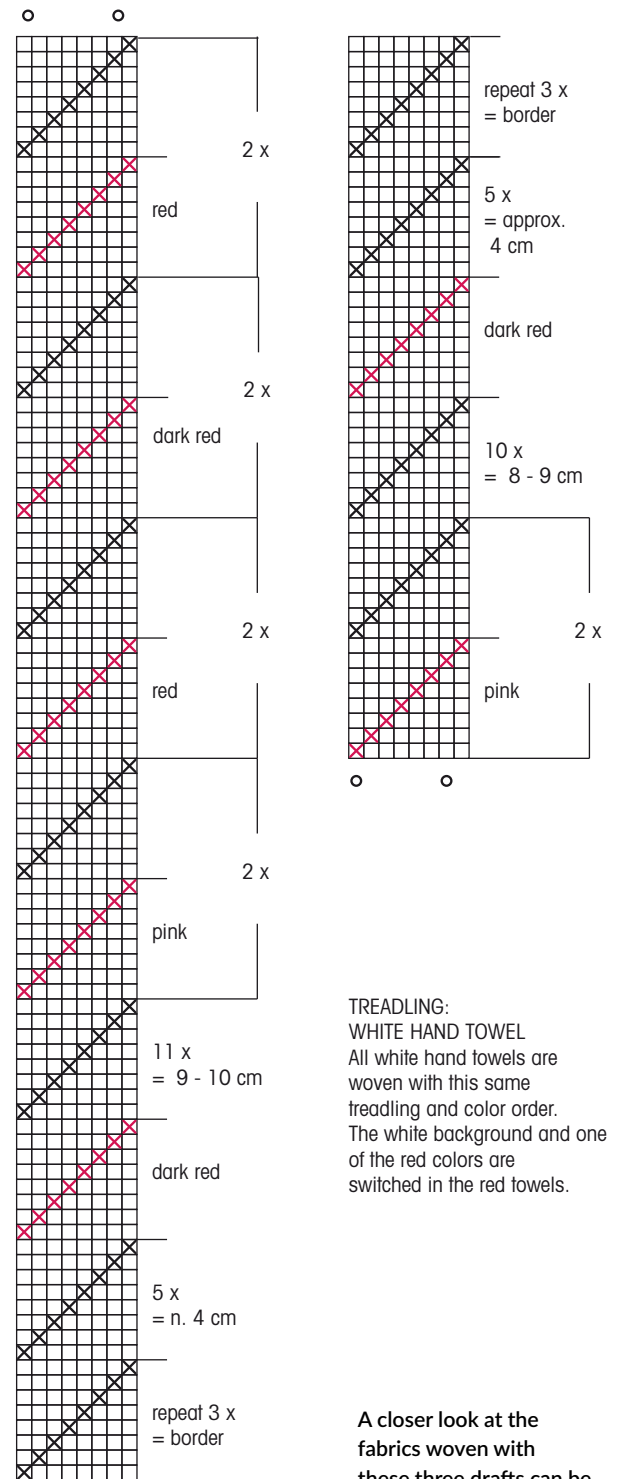
► The commercial use of the weaving patterns and the sharing of designs online is forbidden. All contents of The Weaver's Pick are copyrighted by Mallikerta MH.

TOWEL HANGING LOOPS

We made cord with a Cord Disk 8 for the hanging loops. In the cord there are 7 threads: 6 threads in same color and 1 different color. Bind the threads with an overhand knot and press in the notches. One notch stays empty. Pass a thread over two threads in an empty notch. Continue passing threads in the same way. The finished length of one cord is 13 cm. End with an overhand knot. Use the same yarns as in the woven fabric.

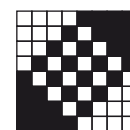
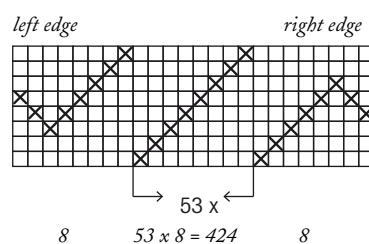


The middle of the hand towel

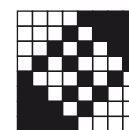


TREADLING:
WHITE HAND TOWEL
 All white hand towels are woven with this same treadling and color order. The white background and one of the red colors are switched in the red towels.

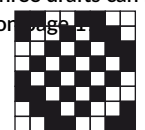
A closer look at the fabrics woven with these three drafts can be found on page 4.



STAR



LACE



FIRECRACKER

