

Dot line 3721

© mallikerta

Purpose - **Coverlet**

Weave - **Overshot**

Shafts - **4-shaft (3 treadles)**

Material - **Cotton**

Level ●●●

Weaving Library
**The Weaver's
Pick**



@mallikerta



mallikerta



@mallikerta



PATTERN DESIGN **Marjatta Hirvi** WEAVER **Kirsi Reilin**

Sofa coverlet rug
Finished size 50 x 180 cm

Dot line 3721

The warp **Minimop Cotton Twine, natural white**
 1 kg = approx. 700 m, Ø 2,5 mm,
 80 % recycled cotton 20 % polyester

Warp width 60 cm
 density 3 threads/cm
 amount of warp ends 181
 length 2,8 m
 amount of warp yarn needed 740 g

Reed 50/1
 Weave Overshot

AMOUNT OF WEFT YARN NEEDED

Minimop Cotton Twine, 1 kg = approx. 700 m, Ø 2,5 mm
 52 natural white 385 g
 Lilli Tube Yarn, 1 kg = approx. 220 m, 80 % recycled cotton
 20 % polyester, Lankava
 22 smoky blue 480 g

WEAVING INSTRUCTIONS

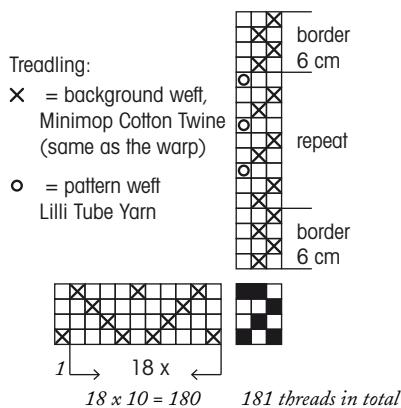
Weave 6 cm for the border using natural white Minimop cotton twine. Alternatively, you can leave fringes or weave just about 3 cm for the border and then fold it completely on the reverse side. The plain weave border is wider than the rug. Weave the rug according to the treadling instructions. Density of the weave is 9 Lilli tube yarns + 18 Minimop cotton twines /10 cm. Woven length is 206 including the border. Nb. The pattern weft doesn't go around the two outmost warp ends. Start the looping weft by turning the tail back in the shed around the third warp thread from the edge in the beginning.

FINISHING

Sew 3-step zigzag on the ends. Press the rug through a damp cloth. Sew the borders by hand using 6-ply cotton twine. Use a blunt tipped tapestry needle. Machine-wash 40°C and spin 1200 rpm, or wash according to the materials you used. Dry flat in an airy and warm place. The fabric dries slowly. ●



Overlap the new tube weft with the end of the old one for 10 cm. Leave the tails on the reverse side. Sew the tail with a few stitches to the weft below and cut. You can also draw the tube yarn tails through each other with a crochet hook before shuttling in the shed.



The rug shrinks considerably both in width and length when woven and washed. Wind a long and wide warp! Keep the warp tension tight and use a temple.

