

# Summer checks 3724

© mallikerta

Purpose - Rug

Weave - Crackle weave

Shafts - 6-shaft

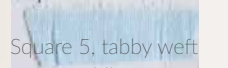
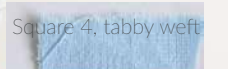
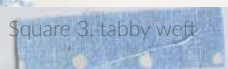
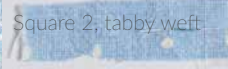
Material - Cotton

Level ●●●

Weaving Library  
*The Weaver's  
Pick*



BACKGROUND WFT:



PATTERN WFT:



@mallikerta



mallikerta



@mallikerta



PATTERN DESIGN **Marjatta Hirvi** WEAVER AND COLORS **Kirsi Vakkari**

© *mallikerta*

*Checked rag rug*  
*Finished size 96 x 177 cm*

## Summer checks 3724

The warp 12-ply Cotton Twine, tex 30x12, 1 kg = 2560 m  
**Warp** width 106 cm  
 density 2,5 threads/cm  
 amount of warp ends 265 + 4  
 length 5,8  
 amount of yarn needed 600 g (= 104 g/1 m)

**Reed** 25/1  
**Weave** Crackle weave

The rug woven only out of cut cotton rags is light and thin. Weave the rug to use on the floor or on the couch. Wind a wider warp for the couch coverlet. Thread the check blocks wider or add check blocks to the threading.



### AMOUNT OF WARP YARN NEEDED

*Background weft (tabby):*

Cotton rag weft, width approx. 1,5 cm  
 approx. 1100 g per 1 rug  
 = approx. 120 g / 21 cm = 1 square height

*Pattern weft:*

Cotton rag weft, width approx. 2,2 cm  
 approx. 1600 g per 1 rug  
 = approx. 180 g / 21 cm = 1 square height

In total approx. 2700 g of background weft and pattern weft per 1 rug. Rag weft strips are cutted from the cotton sheets.

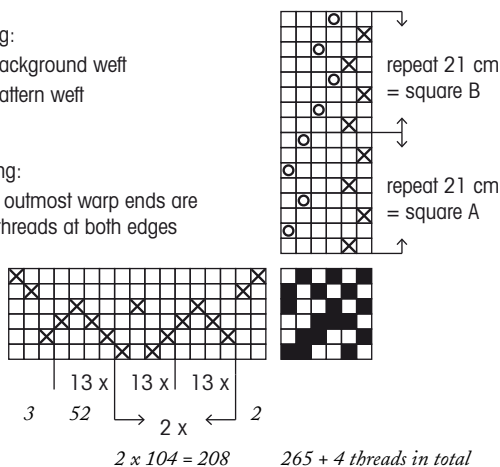
See page 29 for more information on the selvages.

Treadling:

× = background weft  
 ○ = pattern weft

Threading:

The two outmost warp ends are double threads at both edges



### WEAVING INSTRUCTIONS

All blue shaded cotton rags are shuttled in the plain weave sheds and the mottled in pattern sheds. The pattern wefts are cut wider (n. 2,2 cm) than the background wefts. (n. 1,5 cm). Start and finish the rug with few shots of 12-ply cotton twine/same yarn as the warp. One square height is 21 cm and there is 9 squares in this rug. The woven length of the rug is 189 cm. Density of the weave is approx. 3 background weft + 3 pattern weft/1 cm.

### FINISHING

Tie 2 + 2 warp threads with a tight weaver's knot. Make a twisted fringe. Cut the fringe to an even length.

## Add tabby shafts for the Selvages

There is not just one right way to thread selvages for rugs. Different weaves need different kinds of threadings, and it also matters what kind of materials are in use.

### FLOATING SELVAGES

The easiest way to have straight and neat edges is to leave the warp end (a double thread) at the outer edge away from the heddle. This works out with most weaves, but if the rug is an overshot weave with a plain weave background, it doesn't help much. Long floats of the pattern wefts might still appear at the edges. By trying out different threadings at the edges and different directions of the shuttling you might find a reasonable technique, but the simplest way is to add tabby shafts for the selvages. We added two tabby shafts to the checkered rag rugs on pages 30 - 33.

### ADDED TABBY SHAFTS

Two extra shafts are added at the back of the main pattern shafts. Only the tabby warp threads are threaded on those shafts. If the wefts are thin and the pattern weft is only slightly heavier than the background weft, the result will be good despite of the threading order of the tabby. When the weft materials are heavy or the difference of the pattern weft and background weft is considerable, the outmost tabby warp ends at the edges must be on different shafts to form similar edges. The main threading of the rug must be adjusted so that the plain weave continues in a right order. The two outmost warp ends are double threads at both edges as is usual in rag rugs.



Left edge



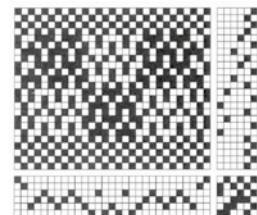
Right edge

We threaded again the three outmost warp ends according to the Draft C at the end of the rug warp for try out. The outmost warp ends at the edges are on different shaft, and therefore background and pattern wefts twine in the same way on both edges.



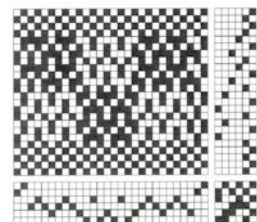
We wove the checkered rug rugs on the page 30 - 33 using extra tabby shafts for the selvages. The outmost warp ends at the edges are on the same shaft. Draft A. The pattern weft is heavier than the background weft and forms a nice edge, but the edges of the rug are not similar.

### THREADINGS FOR TABBY SHAFTS



**Draft A.** The outmost warp ends at the edges are on the same shaft. The edges of the rug are not similar.

**Draft B.** The outmost warp ends at the edges are on the different shaft. The edges of the rug are quite similar also when woven with different weight wefts. Note! The last warp end of the main threading is removed for the correct plain weave continuation.



**Draft C.** Three plain weave warp ends are added to both edges. The outmost warp ends are on different shafts. The edges of the rug are quite similar also when woven with different weight wefts

