

Old rose charm

© mallikerta

Purpose - **Table runner**

Weave - **Overshot**

Shafts - **4-shaft**

Material - **Poppana, Cotton**

Level ●●○

Weaving Library
*The Weaver's
Pick*



@mallikerta



mallikerta



@mallikerta

Poppana table runner
Finishing size 41 x 121 cm

Old rose charm

3725

The warp 6-ply Cotton Twine Liina, tex 30x6,
1 kg = approx. 5300 m, Suomen Lanka
Warp width 42,2 cm
denisty 2,5 threads/cm
amount of warp ends 169 + 4
length 10 m
amount of warp yarn needed 325 g
Reed 40/1
Weave Overshot

WEAVING INSTRUCTIONS

Leave 8 - 10 cm for the fringe on both ends. Start and finish the runner by shooting a few throws with 6-ply cotton twine.

The background weft was light grey. There are two different shades of gray in this runner. They can be seen in the pictures, but they are not given in the weaving instructions.

WEAVING

6 cm tabby light gray
border 1 dusty rose
1 cm tabby
border 2 old rose
1 cm tabby
border 3 dusty rose
6 cm tabby
border 1 dusty rose
2 cm tabby
border 1 cocoa brown
1 cm tabby
border 1 cocoa brown
4 cm tabby
border 1 cocoa brown
1 cm tabby

border 4 old rose
1 cm tabby
border 3 cocoa brown
4 cm tabby
border 1 dusty rose
1 cm tabby
border 2 old rose
1 cm tabby
border 3 dusty rose
4 cm tabby
border 1 dusty rose
1 cm tabby
border 1 cocoa brown
1 cm tabby
border 1 cocoa brown
1 cm tabby
border 4 old rose = *the middle*
Weave the other end of the towel as a mirror image. Weave border 1 instead of border 2 and vice versa. The woven length is 125 cm.

AMOUNT OF WARP YARN NEEDED

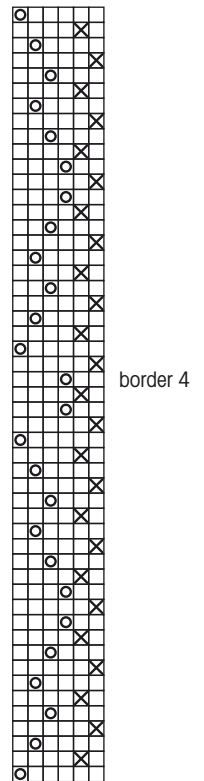
Poppana cotton bias,
width 10 mm, Poppanavakka
2204 light gray 405 g
5206 old rose 70 g



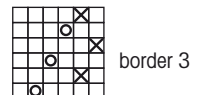
7205 dusty rose 25 g
7803 cocoa brown 25 g

FINISHING

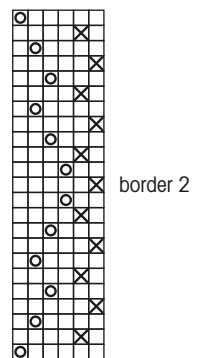
Tie the warp threads with overhand knots. Cut the fringes to an even length.



tabby



tabby



tabby



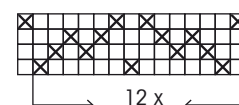
tabby

© **mallikerta**

Treadling:

X = light background weft, tabby
O = pattern weft, borders

The two outmost warp ends are double threads at both edges



1 12 x 14 = 168



169 + 4 in total