

www.theweaverspick.com
www.mallikerta.fi

© mallikerta

For leftover ryg yarns

Three stripes 3731 d

The Weaver's Pick
Autumn 3/2020

Purpose - **Rug** Weave - **Samitum (Kuvikas)** Shafts - **5-shaft** Material - **Cotton twine, Tube Yarns, T-shirt yarns** Level ●●○

Weaving Library
**The Weaver's
Pick**



@mallikerta



mallikerta



@mallikerta

Maarit's pattern for leftover rug yarns

Finished size 79 x 60 cm

Three Stripes 3731 d

The warp Liina Cotton Twine 12 ply, unbleached
tex 30x12, 1 kg = approx. 2 560 m,
Suomen Lanka
Warp width 86,8 cm
density 2,5 threads/cm
number of warp ends 217+4
length 6,8 m
amount of warp yarn needed 585 g = 86 g/1 m

Reed 25/1
Weave Samitum (Kuvikas)

Weave by pressing down two treadles at the same time.
Use the alternative tie-up if you want to weave by pressing only one treadle at a time as usually. The threading is the same in both ways.



WEAVING INSTRUCTIONS

There are three different colour sections side by side on the rug surface, and it is woven with three shuttles: The weft thrown with shuttle 1 comes up in one section of the rug surface, the weft thrown with shuttle 2 on the second section and the weft shot with shuttle 3 on the third section of the rug surface. Throw the shuttles from opposing sides, the directions of the shuttling are in the treadling instructions. 3 shots of the weft increase the fabric as one weft row. On the opposite side the wefts interlace, and colours mix.

With this tie-up the weft thrown in the shed with the first pattern treadle on left comes up on the surface of the rug on the right edge, the weft thrown with the second treadle comes up in the middle of the rug and the weft thrown with the third treadle comes up on the left edge of the rug. Insert the weft at an angle large enough and draw the weft into curves. The weave is inflexible, and it may cause troubles if the width of the cloth is reduced too much. If necessary, test if it is possible to adjust the length of the temple slightly narrower. Be careful, making the width of the cloth too narrow may cause broken warp ends near the fell of the cloth and damage to the reed.

NB The rug ends unravel easily if not supported! Weave few centimetres with an extra weft to support at both ends of the rug. Weave the intervals between the rugs (left for fringes) using warp sticks or heavy cardboard strips.

© mallikerta

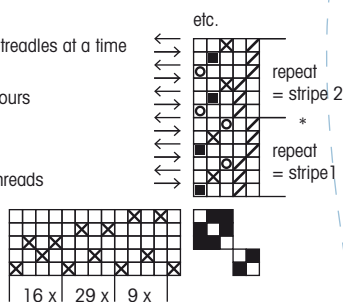
Treadling:

- = colour 1
- × = colour 2
- = colour 3
- / = press two treadles at a time

* change the colours

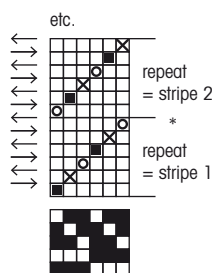
Threading:

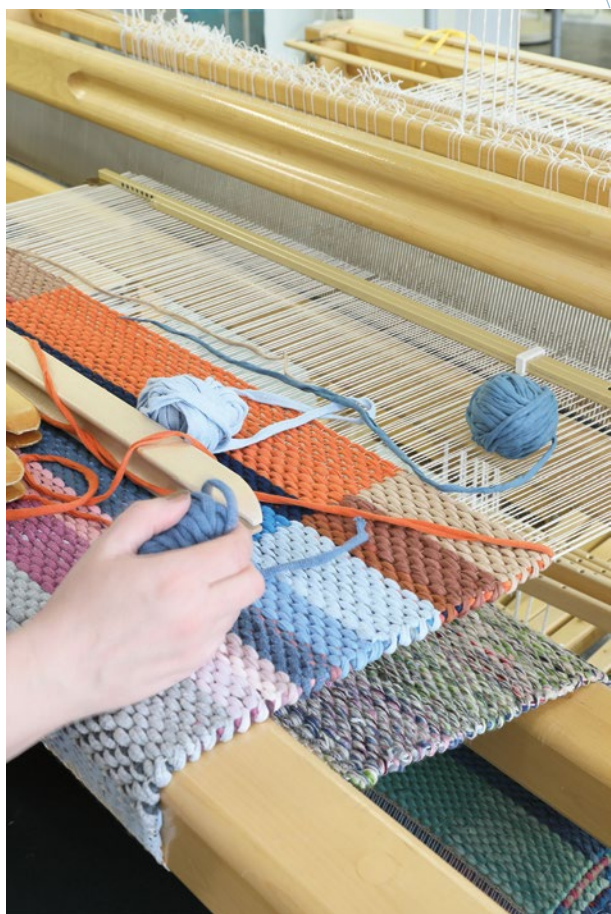
Double 2 edge threads on both sides



64 116 36 1 = 217 ends in total

ALTERNATIVE tie-up
(press one treadle at a time)





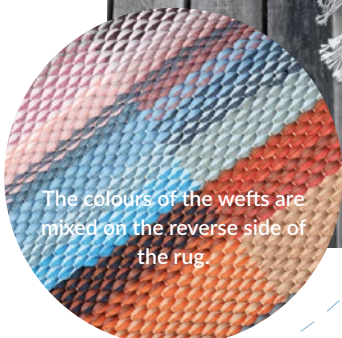
Recycle all your rug yarn leftovers! Divide the different colours into their own baskets. Admire the bundle of colours and start your pleasant weaving moments.



AMOUNT OF WEFT YARN NEEDED

A total of approx. 1,5 kg t-shirt yarns and tube yarns.

© *mallikerta*



The colours of the wefts are mixed on the reverse side of the rug.

Maarit's pattern for leftover rug yarns

Finished size 79 x 60 cm

You can use all the shortest pieces of rug yarn in this rug pattern!

WEAVING INSTRUCTIONS

The durable and sturdy rug is ideal for example in the hallway. Weave varying height colour stripes using every bit of rug yarn to the end. The purpose is to use off the rug yarns for the rest, so combine colours you don't normally use in the same weave. You will be surprised by the beautiful result.

FINISHING

Tie the warp threads 2 + 2 with square knot. Make overhand knots and cut the fringe to an even length.

Tips for joining the wefts

Join the rug yarns by hiding the tails into each other to get a neat and smooth rug. There are a lot of joints when weaving with short lengths of weft yarns as in the rug on page 27. The colour of the weft yarns is not changed at the edges as usually in Finnish rag rugs, but the different colour wefts are joined in the middle of the fabric.

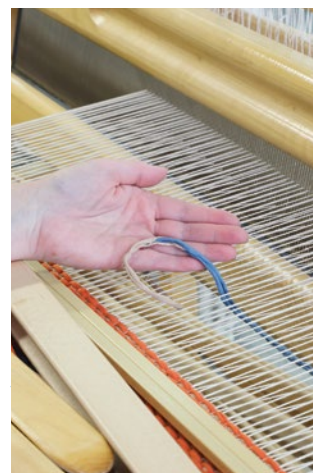
Make the joining in a check where the wefts interlace mainly under the fabric and colours are mixed.

JOIN TWO T-SHIRT YARNS

Taper the ends of the t-shirt yarns. Throw wefts in the shed and overlap the ends around 10 – 13 cm. Spread the end of the weft and wrap it around the end of the other weft. Make sure the weft is drawn up in a proper arc and beat the weft in place.

JOIN A T-SHIRT YARN AND A TUBE YARN

Taper the ends of the yarns. Pull the end of the t-shirt yarn into the tube yarn with a needle or a cord threader. If all the yarn doesn't fit within the tube yarn, cut the extra off to make a finished joint. Straighten the weft into the shed and draw up in an arc. Beat the weft in place.



JOIN TWO TUBE YARNS

Taper the ends of the yarns. Pull the end of the one weft into the other weft with a cord threader or needle. Do the same with the other weft end. See the picture below. If there are some strips of fabric outside the joint, cut them off to make a finished joint. Straighten the weft into the shed and draw up in an arc. Beat the weft in place.