

www.thewaverspick.com

www.mallikerta.fi

The Weaver's Pick  
Autumn 3/2020

# Twill-and-tabby Scarf 3733

© mallikerta

Purpose - Scarf

Weave - Combined tabby and twill

Shafts - 8-shaft

Material - Lace weight wool

Level ●●●

Weaving Library  
*The Weaver's  
Pick*



@mallikerta



mallikerta



@mallikerta



DESIGN OF PATTERN **Marjatta Hirvi** WEAVER **Kirsi Vakkari**

© **mallikerta**

Weave into the same warp  
*Twill-and-tabby Scarf* 59 x 146 cm and  
*Lupine Stripes poncho* 3732 width 82 cm length 65 cm

# Twill-and-tabby Scarf 3733

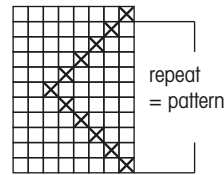
The warp **Veera Comb Wool Yarn**  
 off-white 416  
 tex 55 x 2, 100 g = n. 900 m, Wet-  
 terhoff  
**Warp** width 68 cm  
 density 6 lankaa/cm  
 number of warp ends 408  
 length 4,35 m  
 amount of yarn needed 191 g

**Reed** 60/1  
**Weave** Plain weave and twill combined

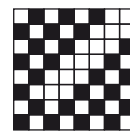
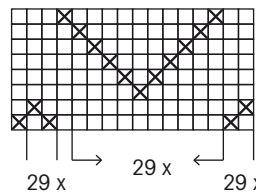
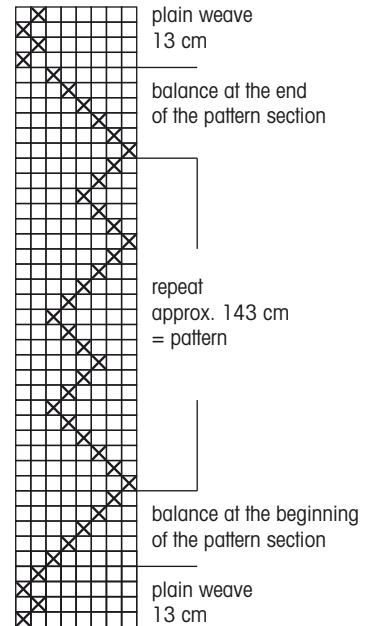
Warp length  
 Poncho 190 cm  
 Scarf 160 cm  
 350 cm in total  
 + 10 % shrinkage 35 cm  
 + loom waste 50 cm  
 435 cm in total



Protect the woven fabric while weaving! A clearer pattern appears to the reverse side of the fabric when woven with these colours in the warp and the weft.



**ALTERNATIVE PATTERN**  
 The white sampel piece is woven with this treading. See picture on the next page.



1 58 1 290 58 408 threads in total



## WEAVING INSTRUCTIONS

Weave the scarf with the light green Veera Comb Wool yarn. Weave 13 cm plain weave at the beginning and the end of the scarf. Weave in the middle of the scarf 143 cm according to the treadling instructions. The density of the weave is 6 picks/cm. Join the weft only on the edge, taper the end of the thread (cut off one strand). The woven length is approx. 170 cm. Measures when taken off the loom 61 x 160 cm. After washing and steaming 59 x 154 cm.

## AMOUNT OF WEFT YARN NEEDED

Veera Comb Wool Yarn, tex 55x3  
100 g = approx. 900 m, Wetterhoff  
435 light green 75 g

## FINISHING

Sew the scarf ends with 3-step zigzag stitches and cut the pieces apart. Make sure the end doesn't unravel. Wet the fabric in lukewarm water, put in a few drops washing detergent (wool). Move carefully. Rinse and dry as straight as possible. Press or steam carefully from both sides.

Turn the hems and press the folds. The inside allowance is approx. 8 mm and the width of the finished hem is approx. 12 mm. Sew the hems with the same thread used for the warp or for the weft.



© mallikerta



Before cutting apart the fabrics, sew a 3-step zigzag stitch at the end of pieces.

### Tip!

Mark one repeat of treadling with a thread.

