

www.thewaverspick.com  
www.mallikerta.fi

© mallikerta

# Scarf for a present 3735

The Weaver's Pick  
Winter 4/2020

Purpose - **Scarf**

Weave - **Twill**

Shafts - **4-shaft**

Material - **Silkwool yarn**

Level ●●●

Weaving Library  
**The Weaver's  
Pick**



@mallikerta



mallikerta



@mallikerta

© *mallikerta*

*Finished size 34,5 x 188 cm + fringes á 9 cm*

## *Scarf for a present*

# 3735

Give a luxuriously soft silk wool scarf as a present! Individual warp threads form airy groups of stripes in the men's scarf. Kirsi wove the scarf as a present and brought it to the Weaver's Pick editing office. We fell in love with the scarf and wished for a similar pattern for the magazine.

It is easy to change the colour of the scarf just by changing the ground colour. Choose a dark colour for the ground where neutral white and beige stripes will come out. The ground color of the first scarf was dark green. Beige is thicker than the other yarns.

The Warp Silvia silkwool yarn, tex 50x2, 50 g = approx. 500 m  
and Sivilla silkwool yarn, tex 50 x 4,  
50 g = approx. 250 m, Wetterhoff

Warp width 38,2 cm  
number of warp ends 229  
density 6 threads/cm  
length 2,8 m

Reed 60/1

Weave Twill

Weft Silvia silkwool, twofold

**AMOUNT OF WARP YARN NEEDED**, length 2,6 m

Silvia silkwool yarn, tex 50x2, 50 g = approx. 500 m

2911 navy blue 48 g

2935 white 17 g

Sivilla silkwool yarn, tex 50 x 4, 50 g = approx. 250 m

4905 light brown 16 g ▶



## INSTRUCTIONS FOR WINDING THE WARP

The thicker Sivilla-yarn is marked in the instructions, otherwise the yarn is thinner Silvia.

- 16 threads navy blue
  - 1 thread light brown Sivilla
  - 5 threads navy blue
  - 1 thread light brown Sivilla
  - 5 threads navy blue
  - 1 thread light brown Sivilla
  - 18 threads white and navy blue alternately
  - 1 thread light brown Sivilla
  - 2 threads navy blue
  - 1 thread light brown Sivilla
  - 2 threads navy blue
  - 1 thread light brown Sivilla
  - 18 threads white and navy blue alternately
  - 1 thread light brown Sivilla
  - 5 threads navy blue
  - 1 thread light brown Sivilla
  - 5 threads navy blue
  - 1 thread light brown Sivilla
  - 5 threads navy blue
  - 1 thread light brown Sivilla
  - 17 threads navy blue
  - 1 thread light brown Sivilla
  - 5 threads navy blue
  - 1 thread light brown Sivilla
  - 5 threads navy blue
  - 1 thread light brown Sivilla = the middle
- Wind the other edge of the warp as a mirror image.  
229 threads in total

## AMOUNT OF WEFT YARN NEEDED for one scarf

Silvia silkwool yarn, tex 50x2, 50 g = approx. 500 m, Wetterhoff  
2911 navy blue 74 g

## WEAVING INSTRUCTIONS

Weave with twofold blue Silvia yarn using straight treadling. Weave with a double shuttle or throw two picks into the same shed going round the outermost warp thread.

The sett of the weft is 4 double threads/cm = 8 threads/cm.

The woven length is 163 cm.

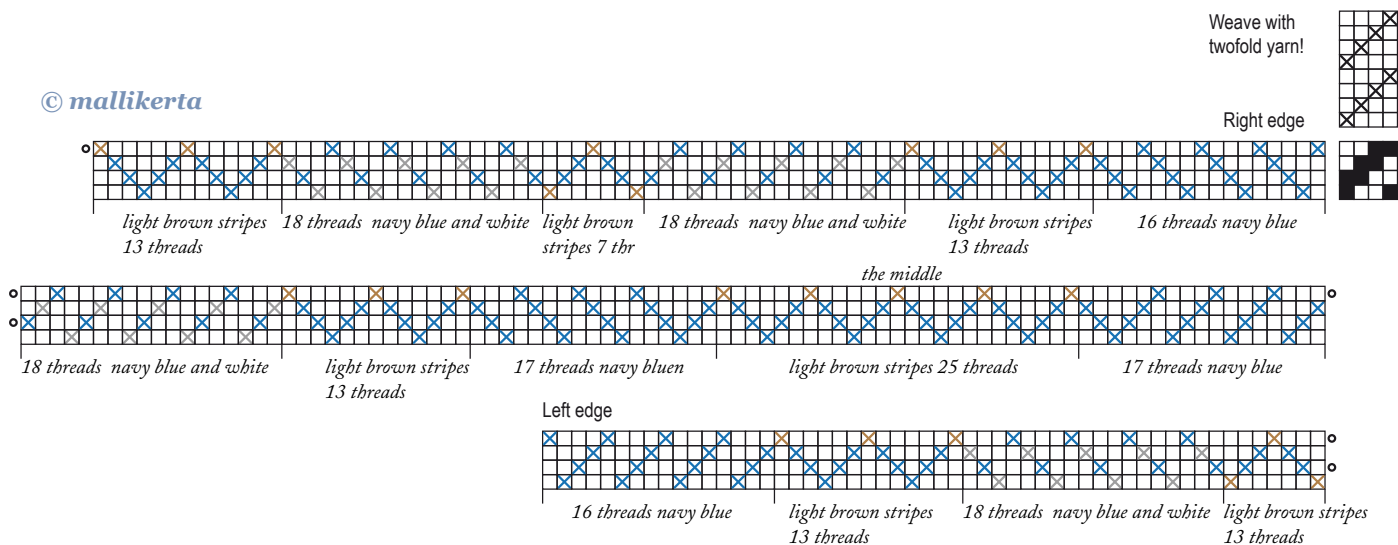
## FINISHING

Make a twisted fringe. Cut the fringe to an even length. ●



The softness, smoothness and the warmth of the silkwool scarf are perfect for the winter.

© mallikerta



**mallikerta - The Weaver's Pick**

Vanhamaantie 3-5 A6, 47200 ELIMÄKI, FINLAND  
S-posti toimitus@mallikerta.fi Puh. +358 40 170 2007

► Mallit on julkaistu kudonnanharrastajien iloksi ja hyödyksi. Kudontamallien kaupallinen käyttö on kielletty. Kudontamalleja ei saa jakaa internetissä. Tekijänoikeudet malleihin, ohjeisiin ja kuviin omistaa Mallikerta MH.