

www.theweaverspick.com
www.mallikerta.fi

© mallikerta

Corkscrew Stripe 3737

The Weaver's Pick
Winter 4/2020

Purpose - **Blanket**

Weave - **Twill, intermittent threading**

Shafts - **8-shaft**

Material - **Wool**

Level ●●●

Weaving Library
*The Weaver's
Pick*



@mallikerta



mallikerta



@mallikerta

Wool blanket 90 x 175 cm

Corkscrew Stripe

3737

We chose to weave intermittent twill with eight shafts to make the fabric as fluffy as possible with a large pattern. Thanks to easy straight treadling, the blanket is completed quickly!

WEAVING INSTRUCTIONS

Leave approx. 15 cm for the fringe on both ends of the fabric. Pick up two picks of plain weave at the beginning and end of the fabric. See page 12 for pick-up instructions. Plain weave picks make it easier to tie fringes, and the edge becomes neat.

Weave the blanket according to the treadling instructions with light beige wool yarn. The sett of the weft is 4 picks per cm. The woven length is 169 cm.

AMOUNT OF WEFT YARN NEEDED for 1 blanket

Esito Worsted Blanket Yarn, tex 143x3, Nm 7/3,
1 kg = n. 2300 m
7076 Light beige 330 g

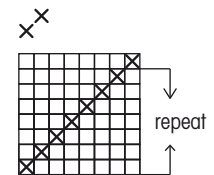
FINISHING

Make 5-thread overhand knots according to the pattern repeat. The outermost fringes come with 6 threads. Cut the fringe to an even length. Air out wool to clean it! If necessary, hand wash in lukewarm water at 30°C. Carefully shape the correct dimensions and let dry on a flat surface. ●

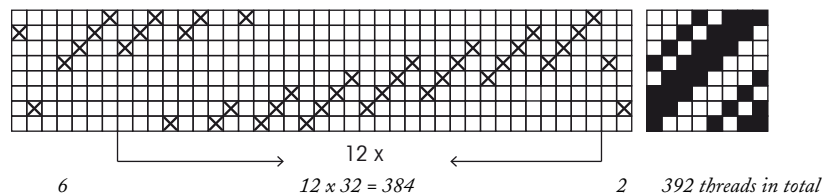


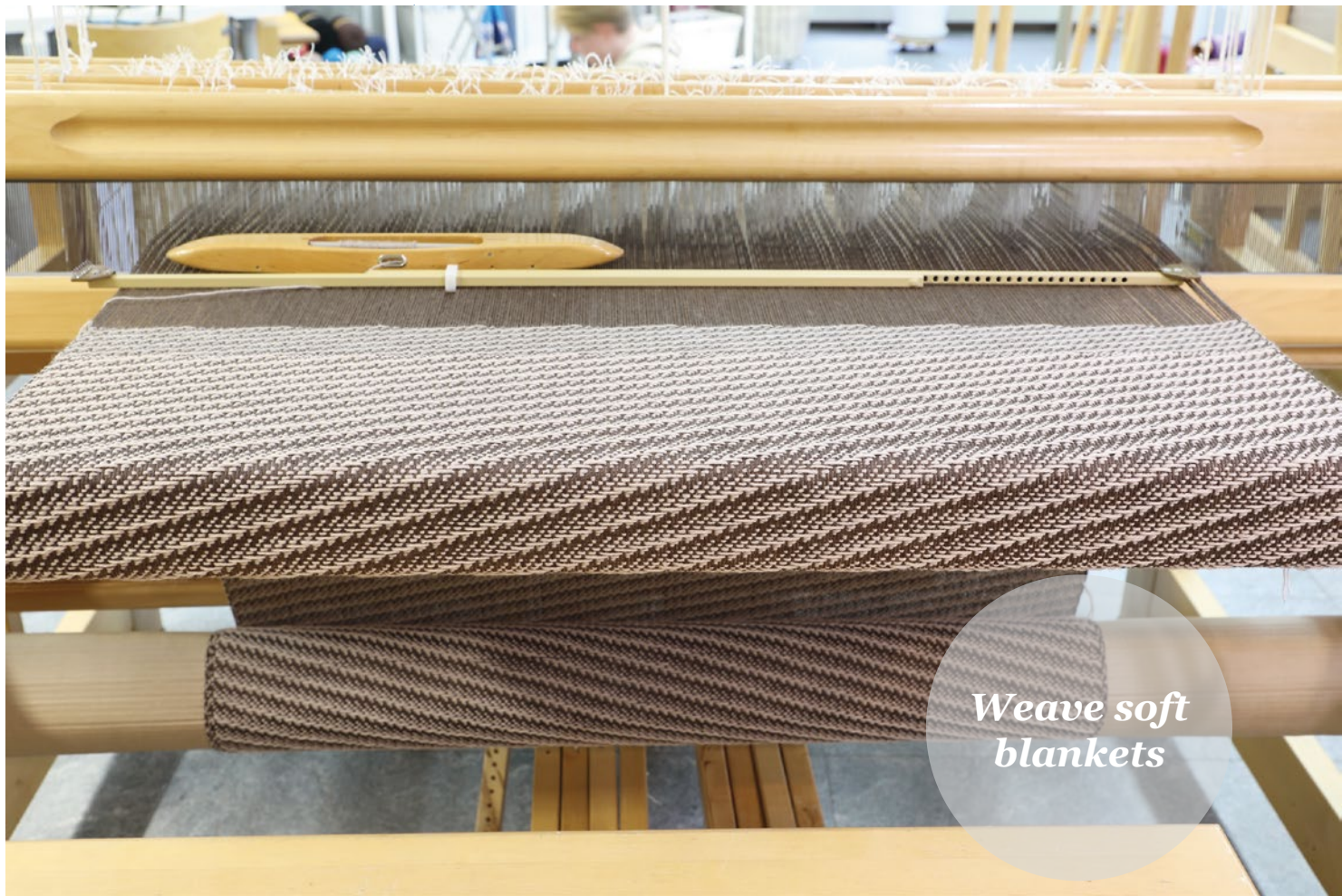
The Warp Esito Worsted Blanket Yarn, Grey-brown 7072, tex 143x3, Nm 7/3,
1 kg = approx. 2300 m, Lankava
Warp width 98 cm
number of warp ends 392
density 4 threads/cm
length 2,74 m
amount of warp yarn needed 457 g

Reed 40/1
Weave Twill, intermittent threading



✕ Pick up two picks of plain weave at the beginning and at the end.





Weave soft blankets

Testing a thin weft

We tried a thin weft at the end of the warp. Compared to the warp thread, the alpaca wool yarn was half thinner but very well suited as a weft. The fabric felt comfortable, and the pattern came out delicate and beautiful.



Warp the loom with dark wool warp for a change! Black is always a safe choice. Other convenient colors are dark brown and dark blue, which is currently trending in home decor. The diagonal stripe pattern comes out beautifully when you weave with light or slightly lighter weft than the warp.



mallikerta - The Weaver's Pick

Vanhamaantie 3-5 A6, 47200 ELIMÄKI, FINLAND
E-mail toimitus@mallikerta.fi Puh. +358 40 170 2007

► The commercial use of the weaving patterns and the sharing of designs online is forbidden. All contents of The Weaver's Pick are copyrighted by Mallikerta MH.