

www.theweaverspick.com
www.mallikerta.fi

© mallikerta

Old Fashion Scarf 3738

The Weaver's Pick
Winter 4/2020

Purpose - Scarf

Weave - Twill

Shafts - 4-shaft

Material - Wool

Level ●●●

Weaving Library
*The Weaver's
Pick*



@mallikerta



mallikerta



@mallikerta



Finished size 135 x 135 cm + fringes

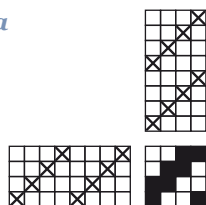
Old Fashion Scarf

3738

The Warp Bio Shetland, 100% Organic Wool, GOTS
 50 g = approx. 280 m, BC Garn
 Warp width 140 cm
 density 4 lankaa/cm
 number of warp ends 560
 length 2,8 m (1 scarf + a sample 20 cm)
 weight 282 g

Reed 40/1
 Weave Twill

© mallikerta



SEPARATELY WOUND WARP STRIPES

A large square-shaped scarf has a similar stripe composition along the warp and weft. We planned roughly the stripe design before warping, but the stripes were placed to the correct slots when spreading in the raddle. When we sleyed the raddle, we made the final decision on how far from the edges the white stripes would be, how many ground coloured yarns are between the stripes, and where the black yarns are going to be placed. We wound individual warps for the ground colours and the stripe colours. The warp had symmetrical stripe design, so we wound two equal warps from each stripe colour to make handling easier. The grey ground colour in the middle was wound as a whole.

INSTRUCTIONS FOR WINDING THE WARP

Warps of different colours are wound next to each other one after another, but the cross and end were tied individually to each warp. In this way, they can be handled as separate warps afterwards. We removed the warp from the warping mill by chaining all of the warps as one unit. See page 18 for more winding instructions.

Warps 11 pcs: Black 12 threads, black 12 threads, unbleached white 12 threads, unbleached white 12 threads, beige 12 threads, beige 12 threads, light grey 12 threads, light grey 12 threads, dark grey 116 threads, dark grey 116 threads, grey 232 threads. A total of 560 threads.

INSTRUCTIONS FOR WINDING THE WARP IN THE CONVENTIONAL WAY

40 threads slate gray
 4 threads ecru / chalk / silver gray
 4 threads slate gray
 4 threads ecru / chalk / silver gray
 4 threads slate gray
 4 threads ecru / chalk / silver gray
 12 threads slate gray
 16 threads slate gray
 20 threads flanel gray
 4 threads black
 4 threads flanel gray
 4 threads black
 4 threads flanel gray
 4 threads black
 176 threads flanel gray = the middle

} 3 x *

* 1. time ecru
 2. time chalk
 3. time silver gray
 = the first of the groups of three stripes is ecru, the second is chalk white and the third is silver gray.

Wind the other edge of the warp as a mirror image.
 560 threads in total

AMOUNT OF WARP YARN NEEDED, length 2,8 m

Bio Shetland, 100% Organic Wool GOTS, 50 g = approx. 280 m, BC Garn
 SH43 slate gray 117 g
 SH42 flanel gray 117 g
 SH45 graphite 12 g
 SH41 silver gray 12 g
 SH40 chalk 12 g
 SH39 ecru 12 g 282 g in total ▶

Separately wound warp stripes



1.



2.



3.



4.



5.



6.



7.



8.

1. Design the stripe composition and decide on the length, width and the number of threads in the stripes. The stripe design doesn't have to be nailed down before winding the warp, because the exact spots of the stripes won't be determined until the raddle is sleyed.

2. Wind different colours in an ordinary way, but tie the cross and the end of the warp for each colour individually. In this way, they can be treated as separate warps.

The warp is beamed through the lease sticks, in which case the cross and the end of the warp needs to be tied only in the other end of the warp. Start chaining the warp from the end without ties. All the warps can be chained as one whole warp at the same time.

3. Insert the wide ground coloured warps to the back apron rod and narrow stripe warps to another rod. Insert the stripe warps approximately in the same order as your stripe design indicates, or make your composition at this point.

4. and 5. Spread the warp in the raddle in the desired colour order. Follow the cross when sleying. Don't mind crisscrossing threads at this point.

6. Follow the order in the raddle and insert the ends of warps to a common back apron rod. Tie the warp beam cords around the rod or pick both the cords and the ends of warp around a new rod.

7. Insert the first lease stick in its correct place by following the order of the threads in the raddle. Be careful, as the warp should be threaded in the order that the lease sticks indicate.

8. Insert another lease stick to its place. Cut out all ties holding the crosses. ▶

9. Beam the warp through the lease sticks.
When the beaming is completed, raise the lease sticks to the other side of the raddle. Lay the threads to the slots of the raddle. They don't have to be in the exact order of the cross. Raise the warp by tying the raddle to the castle. Alternatively, you can raise the warp with a rod. Continue dressing the loom as usual.



WEAVING INSTRUCTIONS

Leave approx. 13 cm length for the fringe. Weave the scarf using the same stripe composition as the warp has. When you change the colour or the weft, thin the ends of the yarns. The sett is 4 picks per cm. The scarf will become square-shaped when there are the same number of picks and ends per cm. The woven length is 157 cm, measured under tension on the loom.

AMOUNT OF WEFT YARN NEEDED for 1 scarf

Bio Shetland, 100% Organic Wool GOTS,

50 g = approx. 280 m, BC Garn

SH43 slate gray 70 g

SH42 flanel gray 70 g

SH45 graphite 7 g

SH41 silver gray 7 g

SH40 chalk 7 g

SH39 ecrú 7 g

168 g in total

FINISHING

Tie the fringe with overhand knots. Cut the fringe to an even length. Wash by hand in lukewarm water with wool detergent. Let it dry on a flat surface. Steam the scarf and the fringe as well! Cut the fringe to an even length once more, to make it extra neat. ●

