

www.theweaverspick.com
www.mallikerta.fi

© mallikerta

Colourful Quintet 3747

The Weaver's Pick
Spring 1/2021

Purpose - **Wall hanging**

Weave - **Overshot**

Shafts - **4-shaft, 6 treadles**

Material - **Line Linen, Wool**

Level ●●○

Weaving Library
**The Weaver's
Pick**



@mallikerta



mallikerta



@mallikerta

Hand towels, finished size 37 x 40 cm

Colourful Quintet

3747

M's and O's can be varied by changing the treadling. You can create multiple different patterns and surfaces by weaving with different colour orders. This traditional weave structure can be produced with only four shafts and treadles.

The warp Cotton 8/2 Bockens, tex 74x2,
1 kg = approx. 6500 m

Warp width 45 cm
number of warp ends 360
the sett 8 ends/cm
length 3,30 m

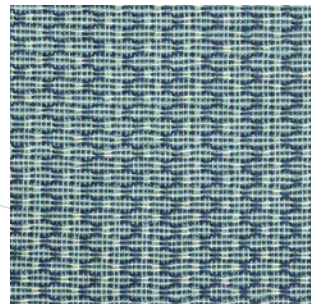
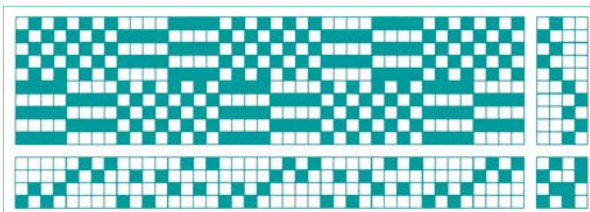
Reed 40/2 (2 per dent in a 40-dent reed)
Structure M's and O's

INSTRUCTIONS FOR WINDING THE WARP

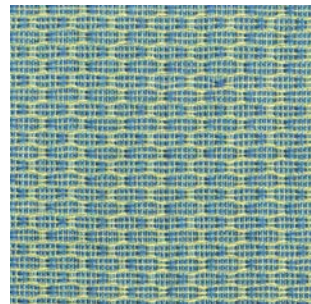
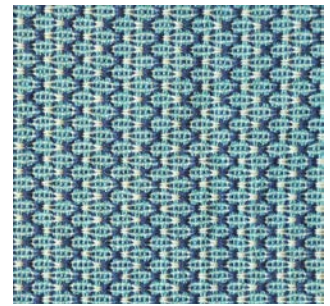
8 threads yellow 2030
344 threads mint green 1312
8 threads blue 603

AMOUNT OF YARN NEEDED FOR THE WARP

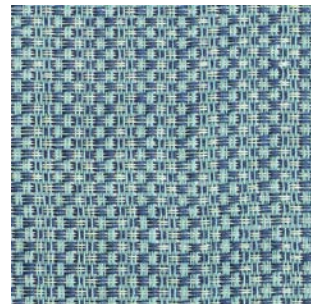
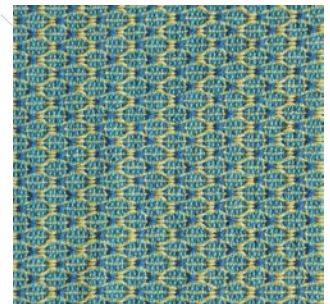
2030 yellow 4 g
1312 mint green 165 g
603 blue 4 g
173 g in total ▶



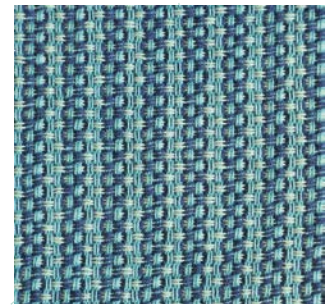
Dark-Coloured Towel



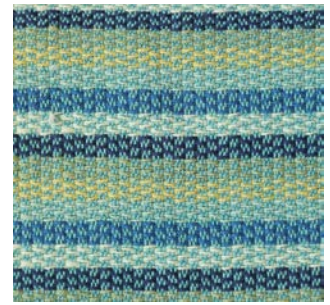
Light-Coloured Towel



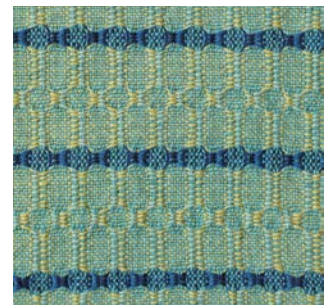
Pseudo-Huck Towel



Stripe Towel



Yellow towel



In the picture on the left side the textile is just taken off the loom, and in the picture on the right side the fabric has been washed. The true structure of the M's and O's is revealed after washing the fabric for the first time.



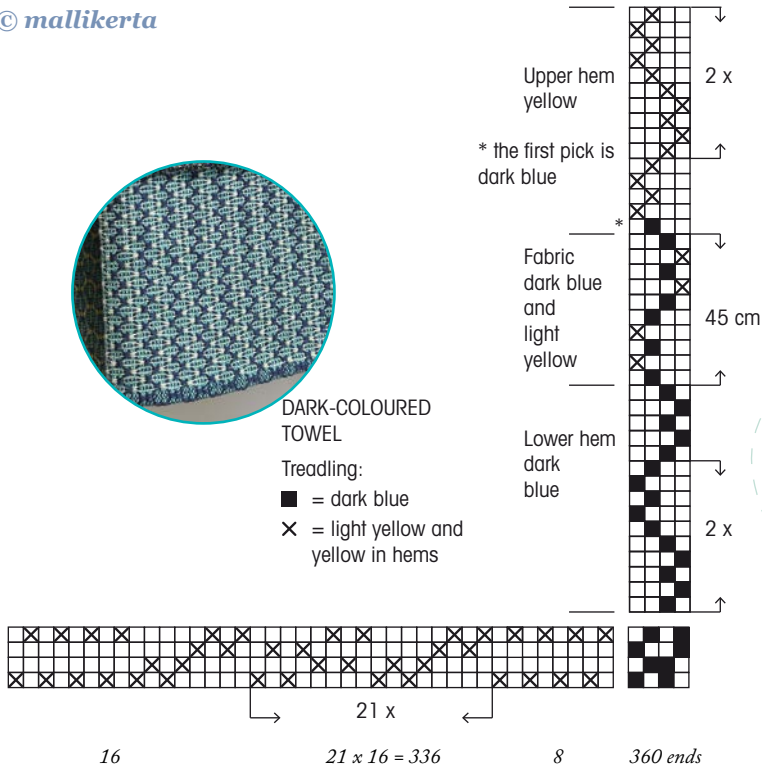
© mallikerta



DARK-COLOURED TOWEL

Treading:

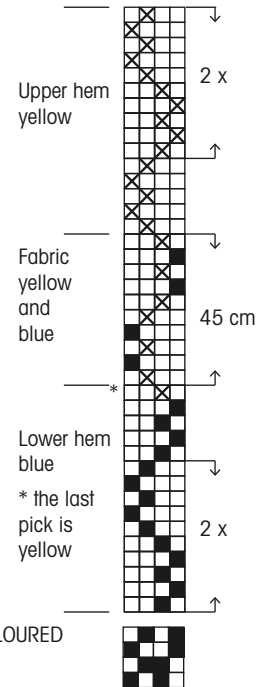
- = dark blue
- × = light yellow and yellow in hems



LIGHT-COLOURED TOWEL

Treading

- = blue
- × = yellow



AMOUNT OF YARN NEEDED FOR THE WEFT

Cotton 8/2 Bockens ja Cotton 8/2 Garnhuset i Kinna, tex 74x2, 1 kg = approx. 6500 m.

The amount of weft needed for each towel is approximately 30 g. Each towel has individual instructions for the weft colours and their specific amounts.

- No floating selvages, except in the Stripe Towel.
- The pattern will stand out after the first wash.

FINISHING FOR ALL OF THE TOWELS

Finish the edges of each towel with 3-step zigzag stitches and cut apart. Iron 2-fold hems and fasten with pins. Place a colourful towel hanging loop inside the hem of one of the corners of the towel. Sew the hems and the loop in its place with invisible ladder stitches by hand.

Dark-Coloured Towel

Finished size 37,5 cm x 40 cm

WEAVING INSTRUCTIONS

Weave the lower hem at least 3 cm wide according to the treadling instructions with dark blue. Follow the instructions and weave 45 cm with light yellow and dark blue. Weave the upper hem at least 3 cm wide with yellow, except the first pick with dark blue.

The sett is 7,5 picks/cm.

The woven length with the hems is 51 cm.

The size of the fabric off the loom was 41,9 cm (width) x 47,5 cm (height) before the wash, and 37,5 cm x 43,5 cm after wash.

AMOUNT OF YARN NEEDED FOR THE WEFT

Cotton 8/2, tex 74x2, 1 kg = approx. 6500 m

dark blue 603 Bockens 17 g

yellow 2030 Bockens 2 g

light yellow 8217 Garnhuset 10 g

Light-Coloured Towel

Finished size 37,5 cm width x 40 cm length

WEAVING INSTRUCTIONS

Weave the lower hem at least 3 cm wide according to the treadling instructions with blue, except the last pick with yellow. Follow the instructions and weave 45 cm with yellow and blue. Weave the upper hem at least 3 cm wide with yellow.

The sett is 7,5 picks/cm.

The woven length with the hems is 51 cm. The size of the fabric off the loom was 41,8 cm (width) x 47 cm (height) before the wash, and 37,1 cm x 43,2 cm after wash.

AMOUNT OF YARN NEEDED FOR THE WEFT

Cotton 8/2 Bockens, tex 74x2, 1 kg = approx. 6500 m

603 dark blue 2 g

137 blue 9 g

2030 yellow 14 g

Pseudo-Huck Towel

Finished size 38 cm x 41 cm

WEAVING INSTRUCTIONS

Weave the lower hem at least 3 cm wide according to the treadling instructions with dark blue and yellow. Follow the instructions and weave approximately 45 cm with light green and dark blue. Weave the upper hem at least 3 cm wide with dark blue and yellow.

The sett is 9 picks/cm.

The woven length with the hems is 51 cm.

The size of the fabric off the loom was 42,6 cm (width) x 48 cm (height) before the wash, and 38 x 44 cm after wash.

AMOUNT OF YARN NEEDED FOR THE WEFT

Cotton 8/2, tex 74x2, 1 kg = approx. 6500 m

603 dark blue Bockens 17 g

8269 light green Garnhuset 11 g

2030 yellow Bockens 3 g

Stripe Towel

Finished size 40 cm x 39,5 cm

WEAVING INSTRUCTIONS

Use floating selvages. Weave the lower hem at least 3 cm wide according to the treadling instructions with yellow. Follow the instructions and weave approximately 45 cm. Weave 1 cm with each colour. The last colour is blue (see the instructions for the last stripes of the towel). Weave the upper hem at least 3 cm wide with yellow.

The sett is 8 picks/cm.

The woven length with the hems is 50,4 cm.

The size of the fabric off the loom was 43 cm (width) x 46,6 cm (height) before the wash, and 39,8 cm x 42,3 cm after wash. ▶

AMOUNT OF YARN NEEDED FOR THE WEFT

Cotton 8/2, tex 74x2, 1 kg = approx. 6500 m

603 dark blue Bockens 4 g

2030 yellow Bockens 7 g

137 blue Bockens 4 g

8269 warm light green Bockens 4 g

8269 light green Garnhuset 4 g

8217 light yellow 4 g

Yellow Towel

Finished size 37,5 cm x 42 cm

WEAVING INSTRUCTIONS

Weave the lower hem at least 3 cm wide according to the treading instructions with blue and dark blue weft alternating.

Follow the instructions and weave approximately 47 cm. Alternate with yellow and light green in the light areas of the towel. Blue and dark blue are alternating in the dark stripes. Intertwine the two wefts at the edge to make sure that the outermost warp thread gets caught.

You can switch the places of yellow and light green in the light area every other stripe. If you start the first stripe with green, start the next stripe with yellow. This way the colours are changing places in the rib parts of the structure. See the treading instructions. Weave the upper hem by continuing to weave with the blue wefts until the blue part is at least 3 cm wide.

The sett is 7,5 picks/cm.

Kudottu pituus päärmeineen on 53,4 cm.

The woven length with the hems is 41,6 cm (width) x 48,5 cm (height) before the wash, and 37,2 cm x 44,9 cm after wash.

AMOUNT OF YARN NEEDED FOR THE WEFT

Cotton 8/2 Bockens 8/2, tex 74x2,

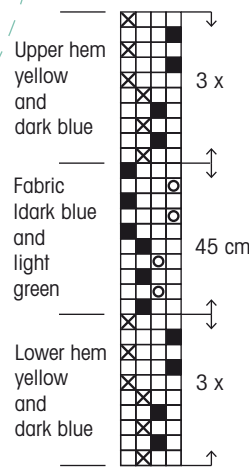
1 kg = approx. 6500 m.

603 dark blue 3 g

137 blue 4 g

2030 yellow 11 g

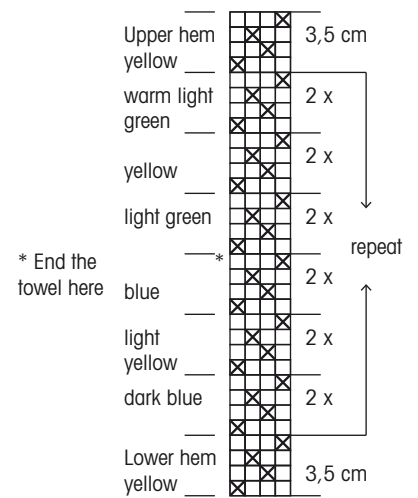
8269 light green 10 g



PSEUDO-HUCK TOWEL

Treading:

- = dark blue
- × = yellow
- = light green



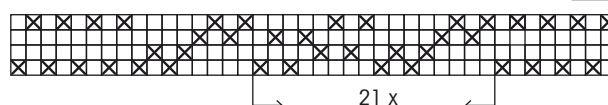
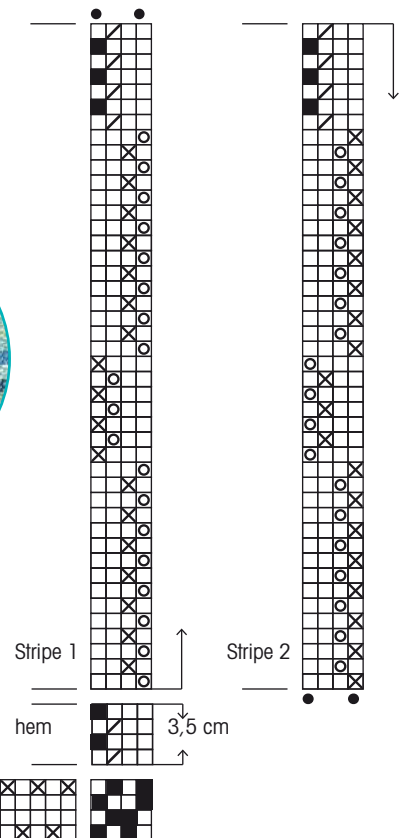
STRIPE TOWEL



YELLOW TOWEL

Treading:

- = dark blue
- ／ = blue
- × = yellow
- = light green



16

21 x 16 = 336

8

360 ends

