

www.theweaverspick.com
www.mallikerta.fi

© mallikerta

Winter Swimming Towels 3748

The Weaver's Pick
Spring 1/2021

Purpose - **Towels**

Structure - **Weft-Backed Satin**

Shafts - **5-shaft, 10 treadles**

Material - **Cotton**

Level ●●●

Weaving Library
*The Weaver's
Pick*



@mallikerta



mallikerta



@mallikerta



© mallikerta



DESIGN OF PATTERN **Marjatta Hirvi** WEAVER **Kirsi Vakkari**

Finished size 72 x 145 cm

Winter Swimming Towels 3748

It is comfortable to wrap in thick and warm towels after winter swimming. The same towels can be laid in the hot sand of the beach on warm summer days.

The fabric has a simple structure, where extra wefts have been inserted in the reverse side of an ordinary structured fabric. This structure is well suited to furnishings and other uses that require high durability because the additional picks strengthen the fabric. The other side can be woven for example solid-coloured and the other side can be striped. The reverse side weft thread can also be thicker than the face side weft thread. See page 23 for more information on the weave structure. Small weft-backed pastel coloured towels on page 28 have been woven with a table loom.

The warp Cotton 8/2, natural white
tex 74x2, 1 kg = approx. 6800 m
Warp width 85 cm
number of warp ends 680
the sett 8 ends/cm
length 4,70 m
amount of yarn needed 470 g

Reed 40/2 (2 per dent in a 40-dent reed)
Structure Weft-Backed Satin

Strip Towel

Finished size 72 x 146 cm, washed

AMOUNT OF WEFT YARN NEEDED

Eko Mercerised Cotton 8/2, tex 74x2,
1 kg = 6 800 m, Garnhuset i Kinna
843 red 307 g
Cotton 8/2, tex 74x2, 1 kg = approx. 6800 m, Bockens
2080 red 155 g
8274 green (Garnhuset) 75 g
603 blue 41 g
11 yellow 12 g
unbleached = natural white 11 g ▶



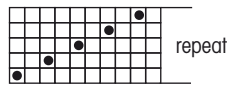
Small towels have been woven at the end of the warp. The wide fabric was cut to three pieces and it produced three small towels. The green fabric is weft-backed with a velvet yarn as an additional reverse side weft. The red fabric is just a regular satin, which can be woven in the same warp by omitting the additional weft.

© **mallikerta**

RED REGULAR SATIN WASHCLOTHS

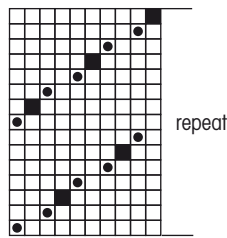
(no back weft)

- = merc. cotton 8/2, cotton



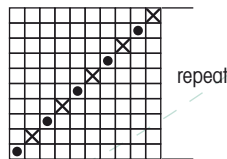
GREEN VELVET FABRIC WASHCLOTHS

- = merc. cotton 8/2, dark green
- = velvet thread, green



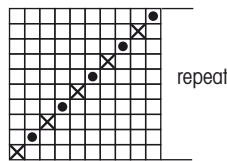
GREEN TOWEL

- × = cotton 8/2, green
- = merc. cotton 8/2, dark green

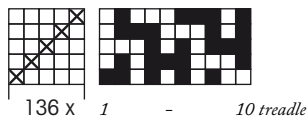
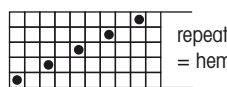


RAIDALLINEN PYYHE

- × = cotton 8/2, red and stripes
- = merc. cotton 8/2, red



The treadles 1, 3, 5, 7 and 9 are producing the face side structure. The treadles 2, 4, 6, 8 and 10 are producing the reverse side structure.



136 x 5 = 680 ends

WEAVING INSTRUCTIONS

Weave 2,5 cm for hems with red mercerized cotton according to the treadling instructions.

Weave alternating red mercerized cotton and regular unmercerized cotton. The stripes are woven with regular cotton. The reverse side of the fabric will be solid-coloured and the face of the fabric striped.

The striping of the face side:

- 19,5 cm red
 - 0,3 cm natural white (= 1 repeat)
 - 0,3 cm red (= 1 repeat)
 - 3 cm blue
 - approx. 1 cm yellow (= 3 repeats)
 - 0,3 cm red (= 1 repeat)
 - 6 cm green
 - 0,3 cm natural white (= 1 repeat)
 - 0,3 cm red (= 1 repeat)
 - 0,3 cm blue (= 1 repeat)
 - n. 1 cm green (= 1 repeat)
 - 0,3 cm blue (= 1 repeat)
 - 0,3 cm red (= 1 repeat)
 - 0,3 cm natural white (= 1 repeat)
 - 6 cm green
 - 0,3 cm red (= 1 repeat)
 - n. 1 cm yellow (= 1 repeat)
 - 3 cm blue
 - 0,3 cm red (= 1 repeat)
 - 0,3 cm natural white (= 1 repeat)
 - Repeat from the beginning 3 times
 - 19,5 cm red
- The sett is 30 picks/cm (15 + 15).
Woven length is 161 cm + hems.
The size of the fabric off the loom is 78 x 154 cm + hems.

FINISHING

Finish the edges with 3-step zigzag stitches. Sew the hems by hand. Sew a towel loop in the middle of the long side approximately 2 cm from the edge. The length of the handwoven rib weave loop was 18 cm. Fold the end 2 cm underneath and sew by hand to the fabric. The loop was woven on a loom, see page 31 for instructions.

Green towel

Finished size 72 x 143 cm, washed

AMOUNT OF WEFT YARN NEEDED

- Eko Mercerised Cotton 8/2, tex 74x2, 1 kg = approx. 6 800 m, Garnhuset i Kinna
- 878 dark green 291 g
- Cotton 8/2, tex 74x2, 1 kg = approx. 6 800 m, Garnhuset i Kinna
- 8274 green 257 g ▶



© mallikerta



WEAVING INSTRUCTIONS

Weave 2,5 cm hems with a dark green mercerized cotton according to the treadling instructions. Weave the towel alternating dark green mercerized cotton and regular green cotton.

The sett is 30 picks/cm (15 + 15).

The woven length is 155 cm + hems 2,5 cm each.

The size off the loom was 78 x 150 cm + the hems.

FINISHING

Finish the edges with 3-step zigzag stitches. Sew the hems by hand. Sew a towel loop in the middle of the long side approximately 2 cm from the edge. The length of the handwoven rib weave loop is 18 cm. Fold the ends 2 cm underneath and sew by hand to the fabric. The loop was woven on a loom, see page 31 for weaving instructions.

Green Velvet Washcloths

Finished size after wash 24 x 19 cm, 3 pieces

WEAVING INSTRUCTIONS

Weave 2,5 cm hems with a dark green mercerized cotton according to the treadling instructions. Weave the towel alternating two picks dark green mercerized cotton and one pick velvet yarn according to the treadling instructions. The velvet yarn will be on the reverse side and the cotton on the right side.

The sett is 14 picks of cotton and 7 picks of velvet/cm.

The woven length is 20 cm + the hems 2,5 cm each. Amount of weft yarn needed for one cloth: Merc. Cotton 8/2 51 g and Velvet yarn 62 g (1 kg = n. 1840 m).

Red Washcloths

Finished size after wash 24 x 19 cm, 3 pieces

WEAVING INSTRUCTIONS

Weave with mercerized cotton according to the treadling instructions. The weave structure is a regular satin without any extra threads on the reverse side.

The sett is 20 picks/cm. The woven length is 20 cm + the hems 2,5 cm each. Amount of weft yarn needed: Mers. Cotton 8/2 66 g.

FINISHING OF THE WASHCLOTHS

Finish the edges with 3-step zigzag stitches. Divide the width to three equal parts and sew zigzagstitches to the edges. The width of the pieces is 26 cm. Cut the pieces apart.

Sew the hems by hand.

The pieces cut from the sides of the fabric:

Sew the woven rib weave ribbon to the cut edge by hand. Cut the ribbon 30 cm long. Fold the ribbon lengthwise right sides together and sew the ends of the ribbon. Turn the right sides over. Attach the ribbon to the edge of the fabric with pins. ▶

Sew both edges of the ribbon at the same time with short stitches that go through every layer of fabric. The other end of the ribbon is sewn to a loop. Close the open edge of the loop by hand stitching.

The piece cut from the middle of the fabric:

Cut a 2,5 cm wide double-fold bias tape 30 cm long. The other end of the tape will be sewn to a loop. Sew the other side of the tape to the fabric by placing the fabric and the tape right sides together. Pin and sew. Turn the tape over the edge of the fabric and sew the other edge to the fabric by hand. Sew the open edge of the loop. Turn the tape to a loop and attach by sewing. Finish the other raw edge same way, but omit the loop. ●



Tip

The weaving of the towels was slow because one centimetre had 30 picks. If the weaving feels like too time-consuming, you can weave the same warp with only one shuttle without the reverse side weft. In this way, the structure is an ordinary satin. You can also weave with a thicker yarn, like in Bunny's Tiny Towels on page 28. The weaving is quicker in that way. You can also weave less picks per centimetre, if you don't mind the warp showing. By the way, the striped fabric feels like it is progressing faster than the solid coloured one.

