

www.theweaverspick.com
www.mallikerta.fi

© mallikerta

Bunny's Tiny Towels 3749

The Weaver's Pick
Spring 1/2021

Purpose - Towels

Weave - Weft-backed 4-harness satin

Shafts - 4-shaft, 8 treadles

Material - Cotton

Level ●●●

Weaving Library
*The Weaver's
Pick*



@mallikerta



mallikerta



@mallikerta

© mallikerta

Finished size 38 x 38,5 cm, 2 pieces

Bunny's Tiny Towels 3749

The warp Cotton 8/2 natural white,
tex 74x2, 1 kg = 6 800 m
Warp width 40 cm
the sett 8 ends/cm
number of warp ends 320
length 2,8 m
amount of yarn needed 127 g

Reed 40/2 (2 per dent in a 40-dent reed)
Structure Weft-Backed 4-harness Satin

PINK TOWEL

The sett is 5,3 + 5,3 picks/cm.

Weave 2,5 cm for the hem with a coloured weft thread.

Weave the towel alternating a coloured and an unbleached weft.

Stripes (+ unbleached every other pick)

Repeat

4 x pink (= approx. 2,6 cm)

5 x yellow (= approx. 3,2 cm)

1 x unbleached white (= approx. 0,8 cm)

5 x yellow

5 x pink

1 x unbleached white

5 x pink

5 x light blue

1 x unbleached white

5 x light blue

Keep on weaving with pink until the fabric is 41,5 cm, measured under tension. Weave 2,5 cm at the end for the hem.

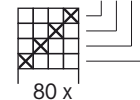
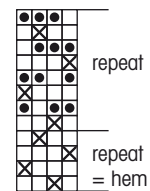
The size of the fabric is 38 cm x 38 cm off the loom + hems. ▶



DRAFT FOR A TABLE LOOM

× = coloured weft
● = unbleached weft

1 - 4 lever



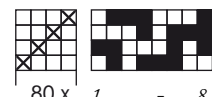
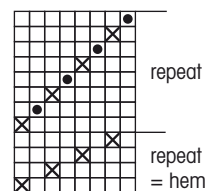
80 x 4 = 320 ends

NB

These towels were woven in a small table loom, but you can weave them as well in a large floor loom.

DRAFT FOR A FLOOR LOOM (countermarch)

× = coloured weft
● = unbleached weft



80 x 4 = 320 ends

1 - 8 treadle



FOR TABLE LOOMS

Weave 2,5 cm for the hem with a coloured weft thread. Repeat 4 times: raise the shaft 3, 1, 4, 2.

The fabric:

Raise the shaft 3: coloured weft

Raise the shaft 1, 3 and 4: unbleached weft

Raise the shaft 1: coloured weft

Raise the shaft 1, 2 and 4: unbleached weft

Raise the shaft 4: coloured weft

Raise the shaft 2, 3 and 4: unbleached weft

Raise the shaft 2: coloured weft

Raise the shaft 1, 2 and 3: unbleached weft

Repeat until the desired length.

AMOUNT OF WEFT YARN NEEDED

Cotton Soft, 50 g = 120 m / 131 yds, 100 % Cotton, Novita:
 (010) unbleached white 42 g, (504) pink 30 g, (203) yellow 6 g
 and (103) light blue 6 g.

BLUE TOWEL

Weave like the Pink Towel, but swap the pink and blue areas.

FINISHING

Sew 3-step zigzag in the ends of the fabrics and cut the pieces apart. Fold and iron the hem and sew by hand. Sew at the same time a loop inside the hem in one of the corners. A hanging loop and a flower was crocheted with the weft threads for the towels.
 The size of the finished hem is 1 cm. ●

