

www.theweaverspick.com
www.mallikerta.fi

© mallikerta

Wave and Orchid 3751

Multipurpose Fabric

The Weaver's Pick
Spring 1/2021

Purpose - Multipurpose fabric Structure - Overshot Shafts - 4-shaft, 6 treadles Material - Cotton, glitter Level ●●○



Weaving Library
**The Weaver's
Pick**



@mallikerta



mallikerta



@mallikerta

© mallikerta

Upholster – Decorate - Sew

Wave and Orchid - Multipurpose Fabric 3751

COLOURS PERMITTED!

Dare to try colours you wouldn't normally use. Our fabric designs include irresistibly wonderful colour combinations that inspire you to start designing your fabric. How about the combination of pink and blue in the Orchid pattern in the Craft Project Bag or the combination of green and red in the Millipede pattern?

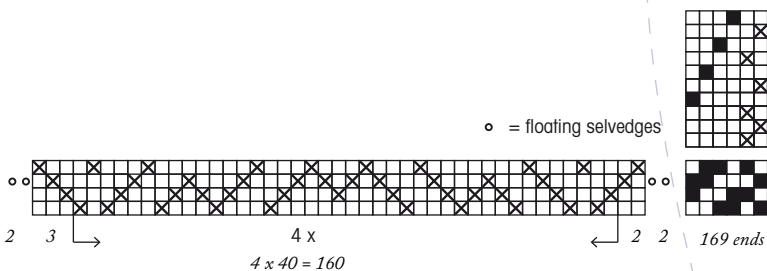
The dense and strong fabric can be used for upholstery, home decoration and sewing projects, like purses and wallets. The tabby weft thread is the same strength as the warp thread. Pattern weft needs to be approximately double strength compared to the tabby weft. You can also wind two thinner yarns together on a bobbin to make a correct strength pattern weft. Add a little glitter yarn to the pattern weft or weave a golden fabric, where half of the pattern weft is golden yarn. ▶



The warp Merssi 8/2 mercerized cotton, #3 Black
 tex 76x2, 1 kg = 6 500 m, 3224 yd/lb, Lankava
 width 21 cm / 8,45"
 number of warp ends 165 + 4 additional ends for
 floating selvages = 169
 the sett is 8 ends per cm / 20 epi
 length 4,74 m / 5,18 yd

Reed 40/2 = 2 per dent in a 40-dent reed (metric) /
 10-dent reed (imperial)

Structure Overshot



Six patterns

Colourful Craft Project Bag

Width 18 cm x height 22 cm

Weave 2 cm plain weave 10 picks/cm with the warp thread as a weft. Alternate with a tabby pick and a pattern pick. Sett is 16,5-17 picks/cm. The patterned section was 53,7 cm measured under tension:

- 8,5 cm Orchid 5 repeats
- 8,8 cm Millipede 6 repeats
- 9,5 cm Marigold 4 repeats
- 9 cm Butterfly 4 repeats
- 9,1 cm Wave 6 repeats
- 8,8 cm Chains 9 repeats

Weave 2 cm plain weave with the warp thread. The patterned section was 19 cm wide x 52 cm long off the loom, and 18 cm + 49,5 cm after the wet-finish. Weave also 8 cm plain weave with the warp thread for the zipper tabs, 10 picks/cm.



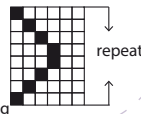
Instructions for Sewing: Fold the piece in half right sides together. Attach a zipper to the edges wrong side up with pins and sew. Sew the side seams with simple stitches over the edges the way that there won't be any seam allowance left inside the bag (= butt seam). The edges of the fabric are facing each other. Pinch and sew the corners in the bottom of the bag to create depth. Turn the bag right side out. Sew the zipper tabs: Finish the small piece of plain weave fabric by sewing 3-step zigzag stitches to the edges and cut out a 9 cm x 8 cm sized piece. Fold the fabric and turn the raw edges inside of the piece. Sew the piece kind of a small pouch. Make two of these and attach them to the ends of the zipper by sewing.

The sett of the weft is 16,5-17 picks/cm (tabby + pattern weft) and 10 picks/cm in the plain weave.

CHAINS

■ = Merc. cotton 8/4 5319 red 4 g (pattern weft)

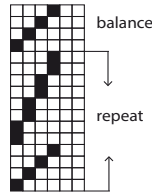
× = Line linen 16/2 1028 yellow green 3 g (tabby weft)



WAVE

■ = Merc. cotton 8/4 5308 turquoise 4 g (pattern weft)

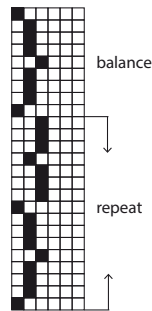
× = Line linen 16/2 86 blue 4 g (tabby weft)



BUTTERFLY

■ = Merc. cotton 8/4 5329 green 5 g (pattern weft)

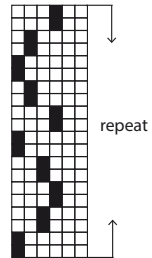
× = Line linen 16/2 89 blue 3 g (tabby weft)



MARIGOLD

■ = Merc. cotton 8/4 5054 pink 4 g (pattern weft)

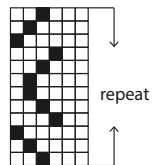
× = Line linen 16/2 86 blue 4 g (tabby weft)



MILLIPEDE

■ = Merc. cotton 8/4 5323 green 4 g (pattern weft)

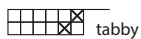
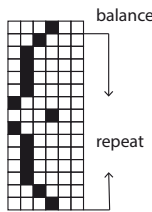
× = Line linen 16/2 43 red 4 g (tabby weft)



ORCHID

■ = Merc. cotton 8/4 5046 pink 4 g (pattern weft)

× = Line linen 16/2 88 blue 3 g (tabby weft)



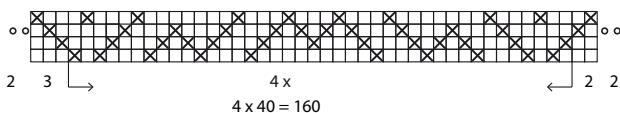
Only the pattern picks are marked in the draft. Weave a tabby pick always after a pattern pick!



169 ends

Threading

○ = floating selvedge



Yarns: Mercerized cotton Almina 8/4, 50 g = 169 m (1 kg = 3 380 m) = pattern weft. Aivina 16/2, tex 103x2, 1 kg = n. 4 900 m, Garnhuset i Kinna = tabby weft. Mercerized cotton 8/2 Meressi, Lankava, tex 76x2, 1 kg = n. 6 500 m = warp thread, for the plain weave.

© *mallikerta*

Snakeskin

Purse - Width 15,5 cm x height 14 cm

The pattern weft has two different coloured 8/2 mercerized cotton yarns and one shimmering metallic yarn wound together on a bobbin. Weave 2 cm plain weave for the seam allowance with the warp thread as a weft. Weave the pattern for 31,5 cm (21 repeats). Weave 2 cm plain weave for the seam allowance at the end. The sett is 10 picks/cm in the plain weave, and 16,5 picks/cm in the patterned section (tabby weft + multiple pattern weft). The patterned section was 19 cm wide x 29,5 cm long off the loom and 18 cm x 28,2 cm after the wet-finishing.

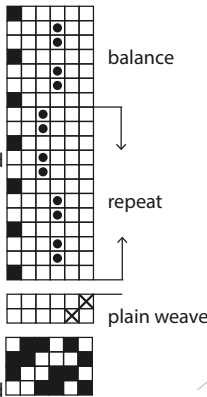
Instructions for sewing: Fold the piece in half right sides together. Attach a zipper to the edges wrong side up with pins and sew. Sew the side seams. Pinch and sew the corners in the bottom of the bag to create depth. Turn the bag right side out and iron gently on low heat to prevent the shimmering yarn from melting. Attach the ends of the zipper inside the purse neatly by hand sewing.



Merc. Cotton 8/2 Garnhuset i Kinna, tex 76x2,
1 kg = approx 6 500 m.
Metallic yarn 0,37 mm, minispool 4 g = 200 m,
Venne Colcoton.

SNAKESKIN

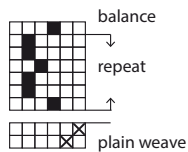
- = Merc. cotton 8/2
827 grey +
864 brown,
4 g each
+ metallic yarn
1014 black 1 g.
All three yarns wound
together on a bobbin
(dark pattern weft)
- = Merc. cotton 8/2
868 grey +
869 light green,
6 g each
+ metallic yarn
1002 gold 1 g.
All three yarns wound
together on a bobbin
(light pattern weft)



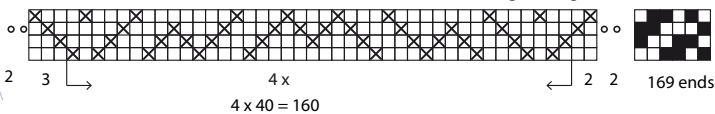
- ✕ = Merc. cotton 8/2 black
(tabby weft, warp thread)

SMALL FISH

- = Cottolin 22/2
doubled, Garnhuset
2243 red 4 g
(pattern weft)
- ✕ = Cottolin 22/2
2059 teal 4 g,
Bockens
(tabby weft)



Threading
○ = floating selvages



Small fish

Mini Pouch, 7 cm width x 9 cm length.

The pattern weft is doubled. Weave 2 cm plain weave with a tabby weft. The pattern is 8 cm (10 repeats). Weave 2 cm plain weave with the tabby weft at the end.

The sett is 10 picks/cm in the plain weave and 15,5 picks/cm in the patterned section (tabby weft + doubled pattern weft).

The patterned section was 19 cm wide x 7,5 cm long off the loom and 17,5 x 7,3 cm after wet-finishing.

Instructions for sewing: Fold the piece in half wrong sides together. Sew the side seams less than 1 cm from the edges. Turn the bag wrong side out and sew the side seams again 1 cm from the edges. The raw edges will remain inside a tiny pocket. Turn right side out and iron gently. Attach buttons on both sides of the pouch by hand sewing. Crochet a figure 8-shaped button loop from doubled tabby weft thread.

Golden Fabric

Evening clutch - Width 18 cm x height 15,5 cm

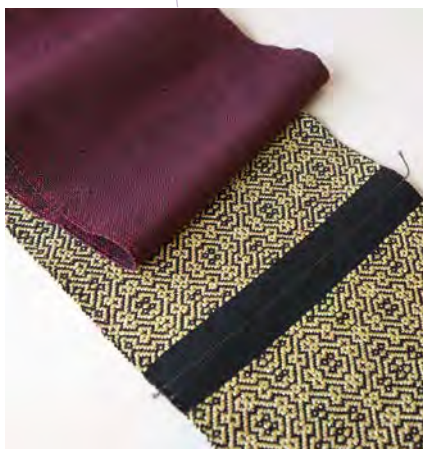


The pattern weft is a golden yarn and a yellow mercerized cotton wound together on a bobbin. Weave 1,5 cm plain weave with the warp thread as a weft for the seam allowance. Weave the pattern 21,8 cm (4 repeats). Weave 1,5 cm plain weave at the end with the warp thread. You need two equal-sized pieces for the outer fabric. Weave the second piece the same way as the first one. The sett is 10 picks/cm in the plain weave, and 15 picks/cm in the patterned area (tabby weft + doubled pattern weft). The patterned section was 18,5 cm wide x 20,5 cm long off the loom. The size was 17,8 cm x 19,4 cm after the wet-finish. Weave an additional 5 cm plain weave with the warp thread as a weft for the side strap tabs.

Lining

You need two equal-sized pieces for the lining. Weave 25 cm plain weave for a piece, so 50 cm in total. Measure under tension. Ease the sewing by weaving one pick of different coloured weft between the pieces. The sett is 10 picks/cm. The size of the lining fabric was 18,5 cm x 49 cm off the loom, and 17,8 cm x 45 cm after the wet-finish.

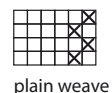
Instructions for sewing: 1. Set another fabric right side facing on a table. On top of it, place a zipper wrong side up along the edge (zipper closed). Place a lining fabric on top. Pin and attach the zipper by sewing. Move the zipper head when it's in the way. Don't sew too close to the teeth. 2. Sew the other side of the zipper: Set another outer fabric right side facing on the table. Place the previously sewn piece folded on top of it in the way that the right sides of the outer fabrics are together. Place the last lining piece on top of the pile. Pin the edge of the zipper and sew. 3. Side strap tabs: Sew 3-step zigzag stitches in the edges of two 5 cm x 5 cm pieces in the black plain weave fabric and cut apart. Fold and iron the pieces first in half and then the raw edges inside towards the centre. Topstitch over the long edges of the piece. 4. Set the outer fabrics and the lining fabrics facing each other (right sides together) and pin all of the sides. Fold the side strap tabs in half and place a D-ring in the middle. Place the folded side strap tabs on both sides between the outer fabrics close to the zipper. Open the zipper. 5. Sew around the piece, but leave a gap in the lining side seam for turning the piece. The side strap tabs get attached at the same time. Use the handwheel when sewing over the zipper. Trim the extra fabric of the side strap tabs if needed. 6. Turn the clutch and iron gently. Stitch the turning gap closed. Attach a metallic chain to the D-rings as a strap.



Mercerized cotton 8/2 Merssi, Lankava, tex 76x2,
1 kg = n. 6 500 m = warp thread, for the plain weave.
Novita Gold 80 % viscose 20 % polyester, 25 g = 95 m
Merc. Cotton 8/2 Garnhuset i Kinna, tex 76x2,
1 kg = approx. 6 500 m

LINING

X = Merc. cotton 8/2
806 wine red 14 g



GOLDEN FABRIC

■ = Novita Gold
golden yarn 17 g
+ Merc. cotton 8/2
816 yellow 11 g
(pattern weft)

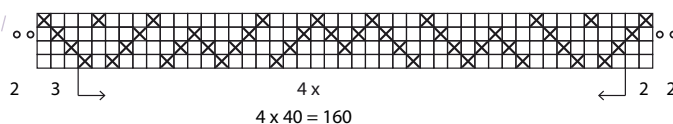
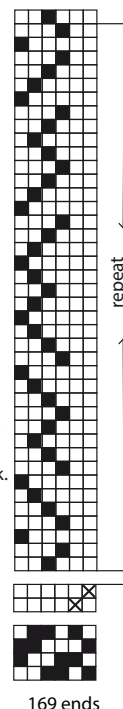
X = Merc. cotton 8/2
black 12 g (warp thread)
(tabby weft)

Weave also 5 cm plain weave with
the warp thread for the strap tabs!

Only the pattern wefts are marked
in the draft. Weave always a tabby
pick (black 8/2) after a pattern pick.

Threading

○ = floating selvages



Tulip Fabric

Wallet - Width 16,5 cm x height 10 cm

Wind together a wine red cotton yarn and a wine red Venne Creafil sparkling yarn on a bobbin. Weave 2 cm plain weave for the hem with a black 8/2 mercerized cotton (warp thread), 35 cm pattern and 2 cm plain weave with the warp thread at the end. Measure the fabric under tension.

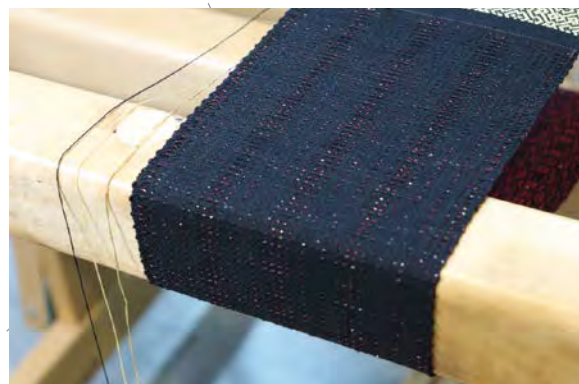
The sett is in the plain weave 10 picks/cm and 16 picks/cm in the patterned section (tabby weft + pattern weft). The patterned section was 19 cm wide x 34,5 cm long off the loom and 17,8 cm x 31 cm after the wet-finish.

Lining and the strap of the wallet

Weave 48 cm according to the treadling instruction with two shuttles. The other weft is a black 8/2 mercerized cotton (warp thread) and the other one is Almina 8/4 cotton and Venne Creafil sparkling yarn wound together on a bobbin. Measure the length under tension. The sett of the weft is 9,5 picks/cm. The cloth was 19 cm wide x 46 cm long off the loom and 18,5 cm x 41 cm after wet-finishing. Weave an additional 15 cm for the strap of the wallet.

Instructions for sewing: 1. Sew 3-step zigzag stitches in the edges of the pieces and cut apart. Fold the hems of the outer fabric to the wrong side, iron and sew by hand. 2. Measure the middle point of the lining and the outer fabric and pin together. When you fold the ends of the piece, the outer fabric forms 5 cm and the lining 7 cm deep pockets. The single-fold hem of the lining was 3 cm. 3. Topstitch on the middle of the pockets to divide them into smaller pockets: On the other side topstitch through the patterned fabric and the single lining fabric only (2 narrow and 1 wide pocket). On the other side topstitch through the patterned fabric and two layers of lining fabric (4 narrow pockets). 4. Sew the side seams right sides together. Remember to leave a gap unsewn for turning the piece.

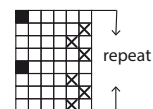
Turn the piece right side up and sew the gap by hand. Steam or press the wallet. 5. The strap: You wove an additional 15 cm long piece of fabric for the strap. Sew 3-step zigzag stitches on both sides of the halfway line of the piece and cut apart lengthwise. You are left with two approximately 7,5 cm wide strips. Sew the strips from their ends to form a long "belt" for the wallet. Fold and iron the piece lengthwise first in half and then the raw edges inside towards the centre. Topstitch over the long edge of the piece. Cut the strap to the adequate length. The other end reaches the edge of the wallet and the other end exceeds the edge by 5,5 cm. Sew zigzag stitches at the end of the cut strap and fold the raw edge inside the piece and sew. Sew the strap to the wallet by hand. Sew the magnetic snaps to their correct places.



Yarns: Mercerized cotton Almina 8/4,
50 g = 169 m (1 kg = 3 380 m)
Venne Creafil Nm24, Minispool 90 m = 3 g
(1 kg = 24 000 m), Venne Colcotton
Mercerized cotton 8/2 Merssi, Lankava, tex 76x2,
1 kg = n. 6 500 m = warp thread, for the plain weave.

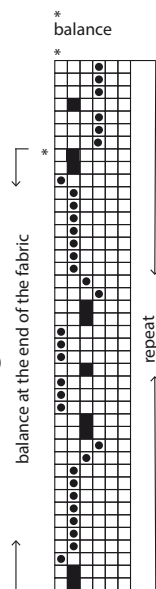
LINING AND STRAP

- = Merc. cotton 8/4
9999 black 9 g
+ Creafil 10-9003
wine red 2 g
wound together on a bobbin
- × = Merc. cotton 8/2
black 13 g (warp thread)



TULIP FABRIC

- = Merc. cotton 8/4
5199 wine red 14 g
+ Creafil 10-9003
wine red 3 g
wound together on
a bobbin
(pattern weft)
- = Merc. cotton 8/4
9999 black 5 g
(pattern weft)
- × = Cotton 8/2
black
(tabby weft, warp thread)



Only the pattern wefts are marked in the draft. Weave always a tabby pick after a pattern pick black 8/2

Threading

- = floating selvages

