

Hay and the Moon 3752

© mallikerta

Purpose - **Blanket**

Weave - **Twill and rib weave**

Shafts - **4-shaft, 6 treadle**

Material - **Cotton**

Level ●●●

Weaving Library
*The Weaver's
Pick*



*Weave and
embroider!*



@mallikerta



mallikerta



@mallikerta

Cotton blanket

Finished size 85 x 152 cm

Hay and the Moon

3752

© *mallikerta*

The white cotton blanket is decorated with grey rib weave stripes and changing the direction of the twill lines in the ends of the fabric. At first, the blanket looked too simple and unclear by its structure. We fell in love with the blanket after a wet finish and tying the fringe. The fabric was comfortably soft, the sett was perfect, and the surface was beautiful. We finished the piece by embroidering the other end with simple motifs!

The warp Cotton Soft Novita, 010 natural white
50 g = 120 m, 100 % cotton, Novita Ltd

Warp width 100 cm
the sett 4 lankaa/cm
number of warp ends 400
length 2,3 m
amount of yarn needed 375 g

Reed One per dent in a 40-dent reed (metric) = 40/1
Weave structure: Weft faced twill and rib weave

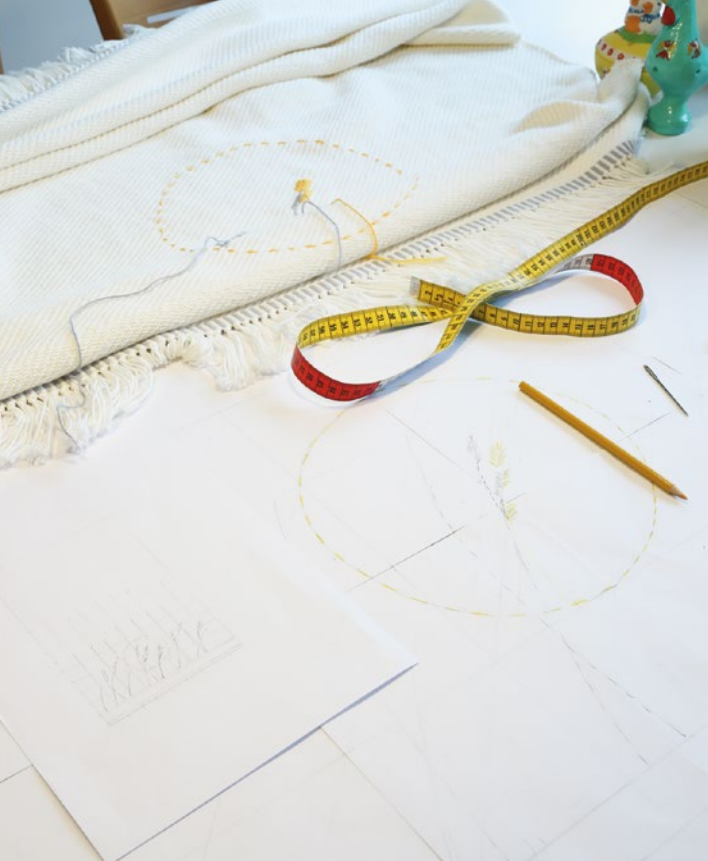
AMOUNT OF WEFT YARN NEEDED

Cotton Soft Novita, 50 g = 120 m, 100 % cotton, Novita Oy
010 natural white 312 g
405 pearl (light grey)

WEAVING INSTRUCTIONS

Leave 7 cm length for the fringe at the ends of the fabric (=short fringes). Weave rib weave with natural white and grey alternating at the beginning and the end of the fabric, 10 + 10 picks = 1,5 cm. Weave the blanket according to the treadling instructions with a natural white weft. The sett is 4,5 picks per cm in the twill weave, which is just slightly more than the warp sett. The woven length is 168 cm and the size of the cloth off the loom is 90 cm x 157 cm. After the wet finish, the size was 85 cm x 152 cm. The cotton cloth was quick to weave, but the loose sett caused the threads to move easily from their places. However, the small irregularities in the weaving smoothed out in the wet finishing. ▶





© mallikerta

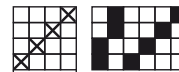
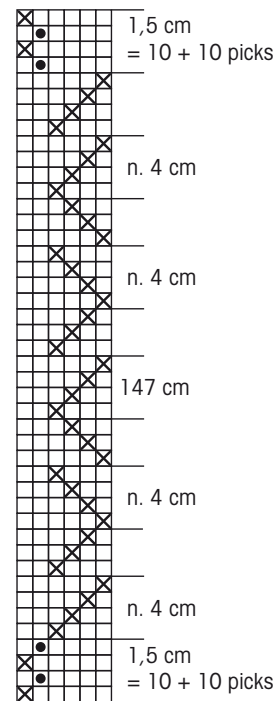
FINISHING

Tie overhand knots with 4 ends. Soak the blanket in warm water with a drop of detergent. Rinse. Cut the fringe even.

COTTON
BLANKET

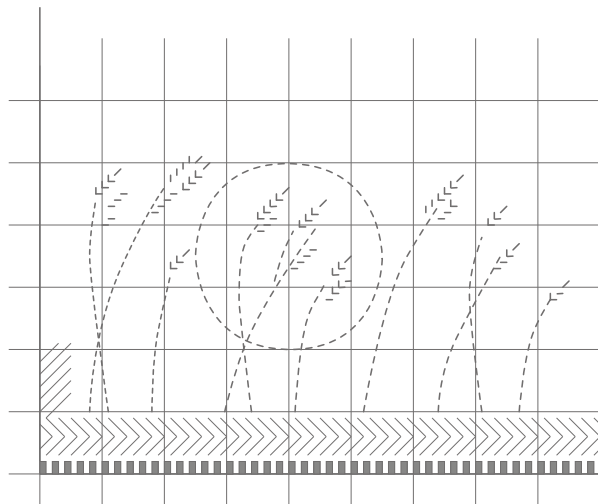
× = white

• = grey



100 x

100 x 4 = 400 ends



EMBROIDER

Draw a pattern and scale it to the correct size. It is easy to measure the correct places of each motif if you draw a grid with 10 x 10 cm squares on your sketch. Embroider the hays with a light grey and a yellow thread and the moon with a yellow thread. The stalks of hays start at the point where the twill line changes the direction for the last time before the middle part with a straight treadingling. The instructions for the embroidery are on the next page.

Try other stitches as well!



The sett is loose in the blanket. The sett is almost balanced with only slightly more picks per cm than ends per cm. The structure of the fabric seems a bit uneven on the loom, but after the wet finish, the fabric will even out and become denser.

Instructions for the Embroidery

Embroider the weft-faced side of the blanket and end the threads on the backside. Both sides will become beautiful. Wet finish the fabric before the embroidery.

1. Embroider the lines with long running stitches on the right side of the fabric. The length of the stitch is over three picks and under three picks. The length of the stitch in the round moon pattern is over and under five threads.
2. End the thread on the backside under the running stitches.
3. Embroider the ears of the hays with satin stitches. The length of a horizontal stitch is over four ends and under three ends. The length of the stitch on the right side is, therefore, the same length as the float of a pick.
4. The next stitch always moves one pick and one end away from the previous stitch in the same way as the twill line runs.
5. The length of a vertical satin stitch is over three and under four ends.
6. The next stitch always moves one end and one pick away from the previous stitch in the same way as the twill line runs.
7. End the satin stitches on the backside by going around the same thread again and again. This produces a beautiful three-dimensional detail.
8. You can also end the threads by going under the satin stitches on the backside of the fabric.
9. End the threads under different coloured running stitches when possible.

The yarn used for the embroidery is the same yarn that was used for the blanket.

Cotton Soft Novita,
50 g = 120 m, 100 % cotton
269 sunflower (yellow)
405 pearl (light grey)



1.



2.



3.



4.



5.



6.



7.



8.



9.