

www.theweaverspick.com
www.mallikerta.fi

Pattern Party: Chalice 3758

The Weaver's Pick
Summer 2/2021

© mallikerta

Purpose - **Placemats** Structure - **Overshot** Shafts - **4-shaft, 6 treadles** Material - **Hemp, Cotton twine** Level ●●○

Weaving Library
**The Weaver's
Pick**



@mallikerta



mallikerta



@mallikerta

Lily and Manor House poppana runners

Hemp placemats

Chalice linen runner and placemats

Pattern Party 3758



The warp 6-ply cotton twine, black and orchid, tex 30x6,
1 kg = approx. 5300 m

Warp Width 35,8 cm
Length 7,25 m
Sett 10 ends/cm (or 5 double ends/cm)
Total of 354 + 4 ends for floating selvages
= 358 ends (177 doubled + 4 for selvages)

Reed 2 per dent in a 50-dent reed (metric) = 50/2
Structure Overshot

INSTRUCTIONS FOR WINDING THE WARP

2 threads black, floating selvages

38 threads black

54 threads orchid

80 threads black

10 threads orchid

80 threads black

54 threads orchid

38 threads black

2 threads black, floating selvages

354 threads in total + 4 floating selvages = 358

AMOUNT OF YARN NEEDED FOR THE WARP

Liina Cotton twine, 6-ply, tex 30x6, 1 kg = approx. 5300 m,
Suomen Lanka

80 black 331 g ja 65 orchid red 158 g ▶

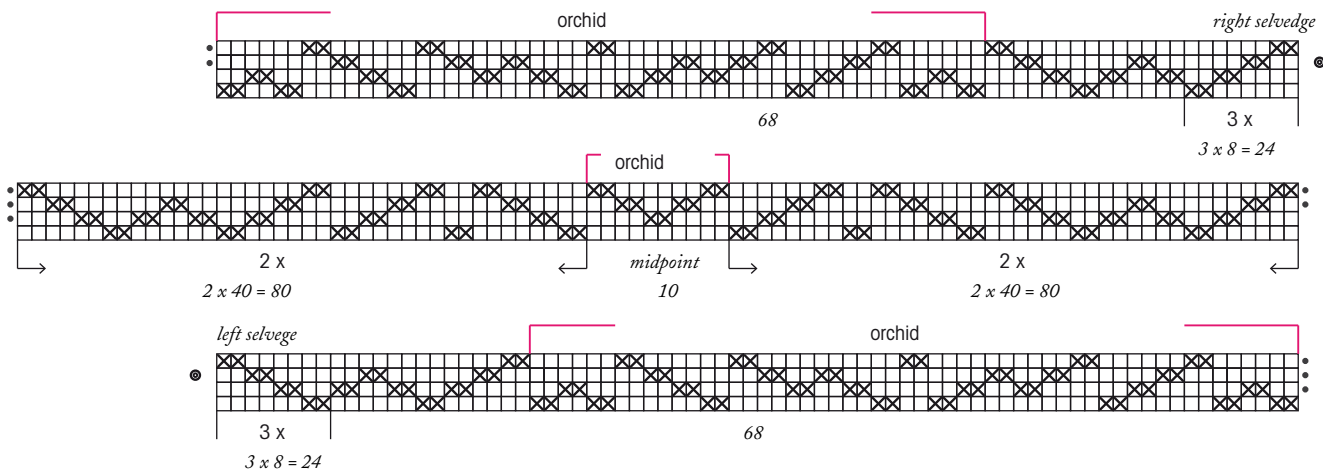
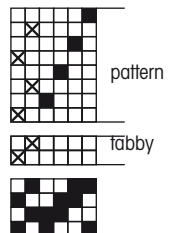
The warp has doubled cotton twine ends

Two ends have been threaded to their own heddles on the same shaft next to each other. You can also pull both threads through the same heddle, the effect is the same. The threads will rise and sink the same way.



Threading:

● = 2 ends not threaded through heddle



Hemp Placemats

Size finished 35 cm x 48 cm, 2 pcs

WEAVING INSTRUCTIONS

2 cm with scrap weft (to be unravelled later)

1,5 cm inner hem allowance with blue Java hemp

4 cm plain weave for the hem alternating turquoise Hampus and blue Java as weft

- Start and finish the hem with Hampus pressing down the 1. treadle (the leftmost)

- The plain weave hem becomes easily wider than the patterned area.

Tighten the weft in the edge and exclude all the bubbling to prevent the hem from waving and widening.

Weave the patterned area (approx. 49,5 cm) according to the treadling instructions.

- Start and finish the patterned area with a red Java tabby pick pressing down the 2. treadle.

- When you weave with the petroleum blue pattern weft, the tabby weft is red. When you weave with the turquoise pattern weft, the tabby weft is blue.

- There is always a red tabby pick between the different coloured areas.

4 cm hem as at the beginning

1,5 cm inner hem allowance as at the beginning

2 cm with scrap weft (to be unravelled later)

WEFT MATERIALS for 2 placemats

Fibra Natura Java, 100 % hemp yarn, 50 g = approx. 100 m, Lankava

(07) blue 61 g – tabby weft in the turquoise area

(09) red 33 g – tabby weft in the red area

TeeTee Hampus, 100 % hemp yarn, 100 g = approx. 85 m,

Tekstiiliteollisuus

(10) turquoise 115 g – pattern weft in the turquoise area

(11) petroleum blue 39 g – pattern weft in the red area

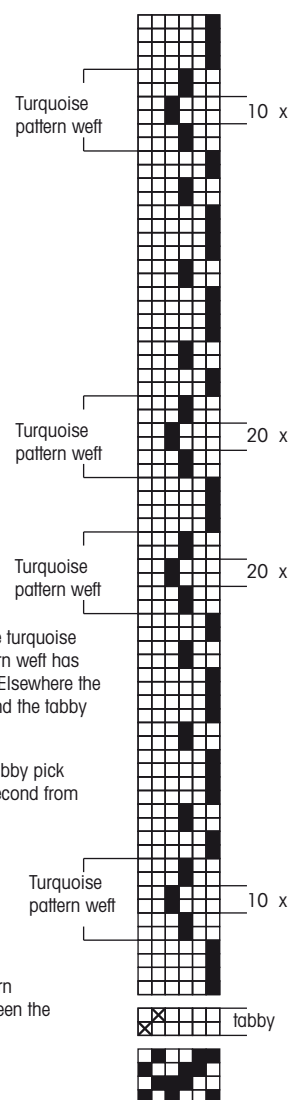
© mallikerta

The tabby weft is blue during the turquoise pattern weft. The turquoise pattern weft has been marked down to the draft. Elsewhere the pattern weft is petroleum blue and the tabby weft is red.

Start the patterned area with a tabby pick pressing down the 2. treadle (second from the left).

Note!

The draft contains only the pattern picks. Weave a tabby pick between the pattern picks.



mallikerta - The Weaver's Pick

Vanhamaantie 3-5 A6, 47200 ELIMÄKI, FINLAND
E-mail toimitus@mallikerta.fi Tel. +358 40 170 2007

► The commercial use of the weaving patterns and the sharing of designs online is forbidden. All contents of The Weaver's Pick are copyrighted by Mallikerta MH.