

# Pattern Party: *Lily and Manor House 3758*

The Weaver's Pick  
Summer 2/2021

© mallikerta

Purpose - **Table runner** Structure - **Overshot** Shafts - **4-shaft, 6 treadles** Material - **Linen, Cotton twine** Level ●●○

Weaving Library  
**The Weaver's  
Pick**

## *Poppana*

Poppana is a long bias-cut strip of cotton fabric. The width is approx. 1 cm. It is a popular weaving material in Finland and can be bought ready-made. You can also cut your own poppana from old sheets. See The Weaver's Pick 2/2019.



@mallikerta



mallikerta



@mallikerta



*Lily and Manor House poppana runners*

*Hemp placemats*

*Chalice linen runner and placemats*

# Pattern Party 3758



The warp 6-ply cotton twine, black and orchid, tex 30x6,  
1 kg = approx. 5300 m

Warp Width 35,8 cm  
Length 7,25 m  
Sett 10 ends/cm (or 5 double ends/cm)  
Total of 354 + 4 ends for floating selvages  
= 358 ends (177 doubled + 4 for selvages)

Reed 2 per dent in a 50-dent reed (metric) = 50/2  
Structure Overshot

## INSTRUCTIONS FOR WINDING THE WARP

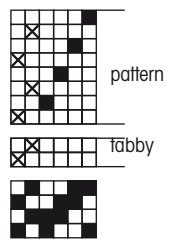
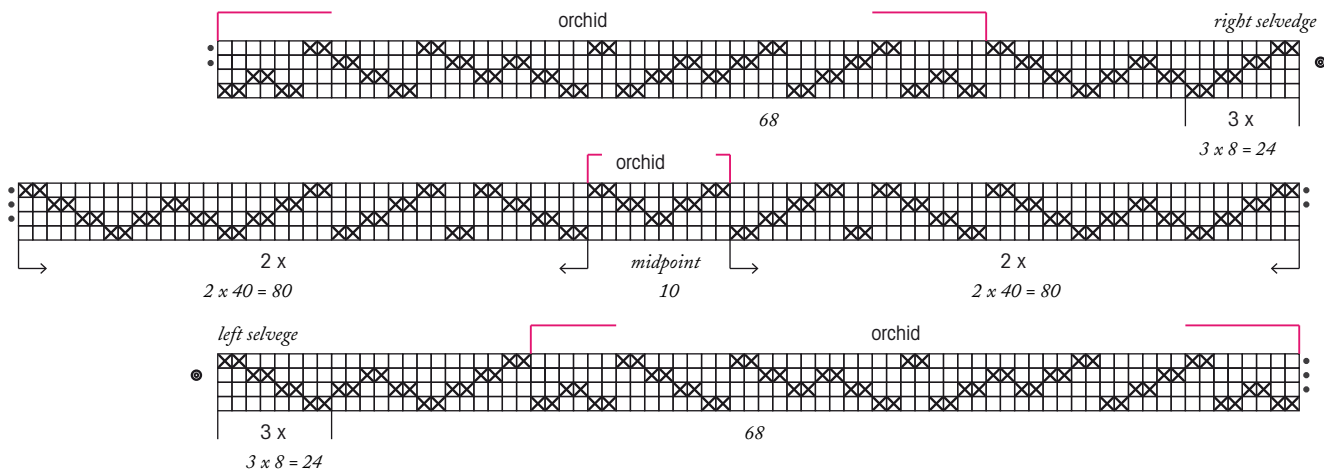
- 2 threads black, floating selvages
- 38 threads black
- 54 threads orchid
- 80 threads black
- 10 threads orchid
- 80 threads black
- 54 threads orchid
- 38 threads black
- 2 threads black, floating selvages
- 354 threads in total + 4 floating selvages = 358

## AMOUNT OF YARN NEEDED FOR THE WARP

Liina Cotton twine, 6-ply, tex 30x6, 1 kg = approx. 5300 m,  
Suomen Lanka  
80 black 331 g ja 65 orchid red 158 g ▶

### *The warp has doubled cotton twine ends*

Two ends have been threaded to their own heddles on the same shaft next to each other. You can also pull both threads through the same heddle, the effect is the same. The threads will rise and sink the same way.



# Manor House Poppana Runner

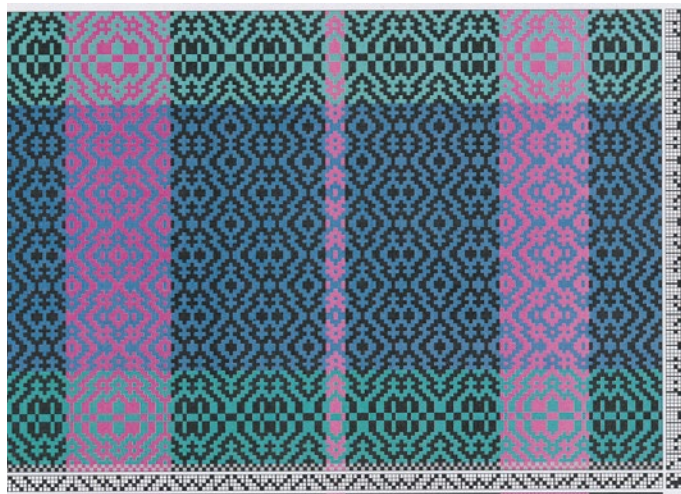
Size finished 33,5 cm x 124 cm

## WEAVING INSTRUCTIONS

- 2 cm with scrap weft (to be unravelled later)
- 1,5 cm inner hem allowance with doubled cotton twine
- 4 cm tabby for the hem with turquoise poppana
- 128 cm according to the treadling instructions (1 repeat = approx. 20,5 cm).
- Start and finish the pattern with a tabby pick pressing down the 1. treadle.
- Repeat 6 times + yet another turquoise stripe to balance.
- 4 cm hem as at the beginning
- 1,5 cm inner hem allowance as at the beginning
- 2 cm with scrap weft (to be unravelled later)

## MATERIALS FOR THE WEFT

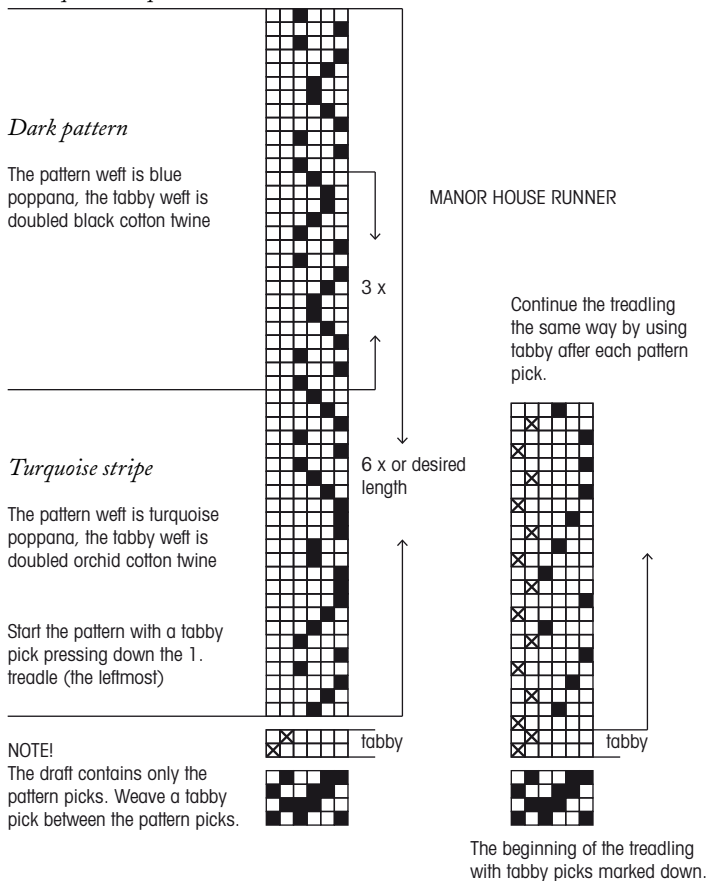
- Liina Cotton twine, 6-ply, 1 kg = approx. 5300 m
- 80 black 51 g (tabby weft in the dark pattern)
- 65 orchid 22 g (tabby weft in the turquoise stripe)
- Poppana, width 10 mm, Poppanavakka
- 6705 indigo blue 182 g (pattern weft in the dark pattern)
- 6701 turquoise 95 g (pattern weft in the turquoise stripe)



© mallikerta



+ Turquoise stripe at the end of the runner





## Lily Poppana Runner

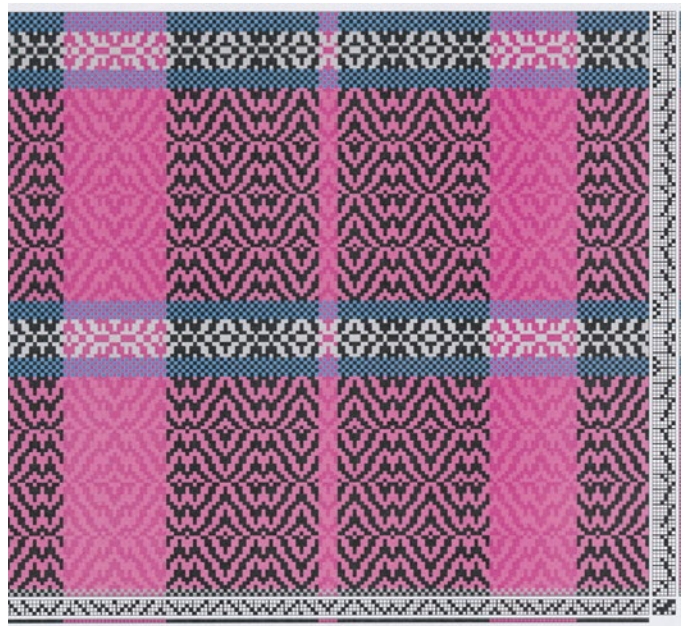
Size finished 33,5 cm x 116 cm

### WEAVING INSTRUCTIONS

- 2 cm with scrap weft (to be unravelled later)
- 1,5 cm inner hem allowance with doubled blue cotton twine
- 4 cm tabby for the hem with dark blue poppana
- 120 cm according to the treadling instructions (1 repeat = approx. 20,5 cm).
- Start and finish the pattern with a tabby pick pressing down the 2. treadle.
- Repeat 5 times + yet another pink pattern to balance.
- 4 cm hem as at the beginning
- 1,5 cm inner hem allowance as at the beginning
- 2 cm with scrap weft (to be unravelled later)

### WEFT MATERIALS

- Liina Cotton twine, 6-ply, 1 kg = approx. 5300 m
- 75 indigo blue 57 g (tabby weft)
- Poppana, width 10 mm, Poppanavakka
- 5701 fuchsia 174 g (pattern weft in the pink pattern)
- 2203 light grey 31 g (pattern weft in the light pattern stripe)
- 6704 dark blue 40 g (hems and the gaps between the pattern stripes)



+ *Pink pattern* at the end of the runner

