

# Pepper and salt

3759

[www.theweaverspick.com](http://www.theweaverspick.com)

[www.mallikerta.fi](http://www.mallikerta.fi)

© mallikerta



@mallikerta



mallikerta



@mallikerta



*Kitchen towels*

*Finished size 41 x 59 cm, 42 x 42 cm  
and a linen towel 45 x 45 cm*

## *Pepper and Salt 3759*

Weave stylish cottolin kitchen towels flavoured with pepper black. Wind a long warp for all the lovely weft yarns you can use in this pattern. Weave a fast-drying cloth with linen yarn and a softer cloth for instance for hand towels with cotton yarn. Use cottolin yarn for all kinds of home textiles.

The warp Cottolin 22/2 (22/2 Bomull Lin), tex 76x2,  
1 kg = approx. 6400 m, 60 % cotton 40 % linen  
Garnhuset i Kinna

Warp width 48,2 cm  
the sett 8 ends/cm  
number of yarn ends 386  
length 4,33 m

Reed 2 per dent in a 40-dent reed (metric) = 40/2  
Structure Huckaback

### AMOUNT OF WARP YARN NEEDED

Cottolin 22/2 (22/2 Bomull Lin), tex 76x2,  
1 kg = approx. 6400 m, 60 % cotton 40 % linen  
black 169 g  
white (= bleached) 65 g  
unbleached 46 g

### INSTRUCTIONS FOR WINDING THE WARP

28 threads white  
22 threads unbleached  
22 threads white  
22 threads unbleached  
22 threads white  
22 threads unbleached  
22 threads white  
226 threads black  
= 386 threads in total ▶

[www.theweaverspick.com](http://www.theweaverspick.com)  
[www.mallikerta.fi](http://www.mallikerta.fi)

© **mallikerta**







## AMOUNT OF WEFT YARN NEEDED

Cottolin 22/2 approx. 60 g for 1 meter

Line linen 8 or Linen Tow 8 approx. 70 g for 1 meter  
when the sett is 8 picks/cm

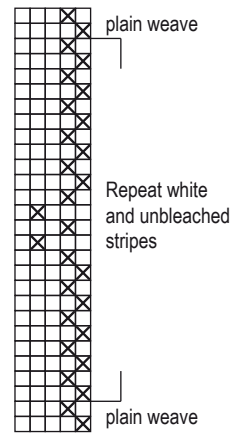
## FINISHING FOR ALL TOWELS

Finish the edges of each towel with 3-step zigzag stitches.

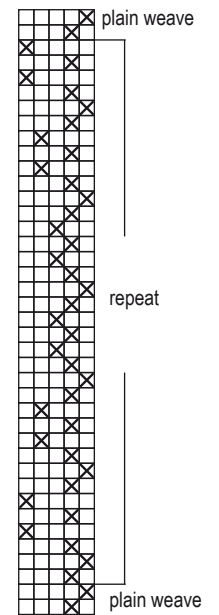
Steam or iron the fabric. Sew the hems by hand. Finished size of the hem is around 1 cm. Use the loom waist for the hanging loops.

Braid the warp threads doubled to have sturdy loops.  
Braid 14 cm log band for a one hanging loop.

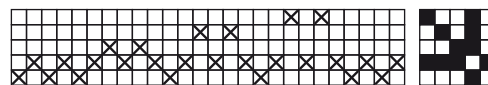
Wash 40 – 60°C. Wash by hand the first time. There might appear lint in the wash. ▶



LINEN TOWELS



LONG TOWELS



$3 \times 2 = 6$

$17 \times 22 = 374$

$3 \times 2 = 6$



© mallikerta



## Long towels

Finished size 41 x 59 cm, 2 pcs

Weave 1 cm tabby for a hem at both ends. Weave the towel with unbleached Cottolin 22/2 according to the treadling instructions.

The sett is 8 picks/cm. The woven length is 68 cm + hems á 1 cm. Braid the hangingloop of unbleached threads and sew it in the middle of the short side inside the hem. The size of the towel before washing was 44 x 60 cm.

### AMOUNT OF WEFT YARN NEEDED

Cottolin 22/2 (22/2 Bomull Lin), tex 76x2, 1 kg = approx. 6400 m, unbleached 40 g for 1 towel.

## Linen towels

Finished size 45 x 45 cm, 2 pcs

Weave 2 cm tabby for a hem at both ends. Weave alternating white and unbleached stripe. The stripes are as high as in the warp.

The woven length is 57 cm + hems á 2 cm.

Braid the hangingloop of black threads and sew it in the middle of the short side inside the hem. The size of the towel before washing was 47 x 47 cm.

### AMOUNT OF WEFT YARN NEEDED for one towel

Line linen or Linen tow 8, 1 kg = approx. 4 800 m / 5 100 m

white = bleached 23 g

unbleached 17 g

## Black square towels

Finished size 42 x 42 cm, 2 pcs

Weave 1 cm tabby for a hem at both ends. Weave stripes with white and unbleached in the same order as in the warp and the rest of the towel with black. The woven length is 50 cm + hems á 1 cm.

Braid the hangingloop of black threads and sew it into the black corner of the towel inside the hem. The size of the towel before washing was 44 x 44 cm.

### AMOUNT OF WEFT YARN NEEDED for one towel

Cottolin 22/2 (22/2 Bomull Lin), tex 76x2, 1 kg = approx. 6400 m,

white = bleached 9 g

unbleached 5 g



Braid the hanginloops of the warp threads.

Obs. Towels in the pictures are unwashed. After washing the structure was as beautiful as earlier and the pattern was more intense.



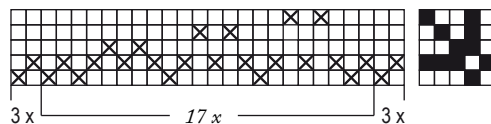
TABBY TOWEL



You can weave also tabby towels!



BLACK SQUARE TOWELS

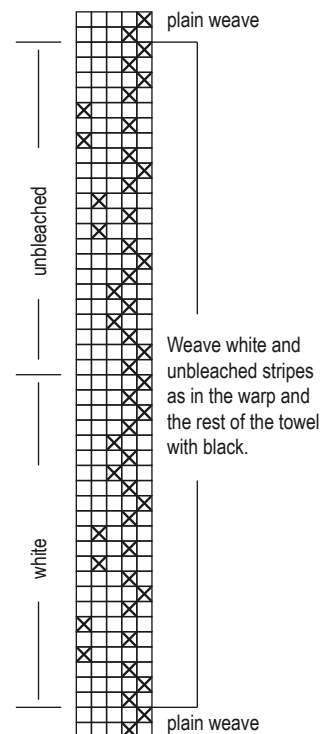


3 x 2 = 6

17 x 22 = 374

3 x 2 = 6

4



Weave white and unbleached stripes as in the warp and the rest of the towel with black.