



# ***Chequered Flag***

## **3760**

[www.theweaverspick.com](http://www.theweaverspick.com)

[www.mallikerta.fi](http://www.mallikerta.fi)

[@mallikerta](#)



@mallikerta



mallikerta



@mallikerta

DESIGN OF PATTERN **Marjatta Hirvi** WEAVER **Kirsi Vakkari**

[www.theweaverspick.com](http://www.theweaverspick.com)

[www.mallikerta.fi](http://www.mallikerta.fi)

© *mallikerta*

*Placemats on a table loom*

*Finished size 33 x 44 cm*

## *Chequered Flag 3760*

Thick cotton yarn is a perfect choice for table looms. These homely-looking placemats are quickly woven. Finish the placemats by tucking the warp ends behind the weft ends.

The same kinds of sport thickness yarns as used in this pattern can be easily found from many shops.

The warp Cotton Soft Novita, 010 natural white  
50 g = 120 m, 100 % cotton, Novita Oy

Warp width 36 cm  
the sett 4 ends/cm  
number of yarn ends 144  
length 3,36 m  
amount of warp yarn needed 214 g

Reed 1 per dent in a 40-dent reed (metric) = 40/1  
Structure Weft-faced rep

### ***Black and white placemats***

Size finished 32 x 44 cm

AMOUNT OF WEFT YARN NEEDED for 1 place mat

Cotton Soft Novita, 50 g = 120 m, 100 % cotton

010 natural white 80 g

099 black 10 g

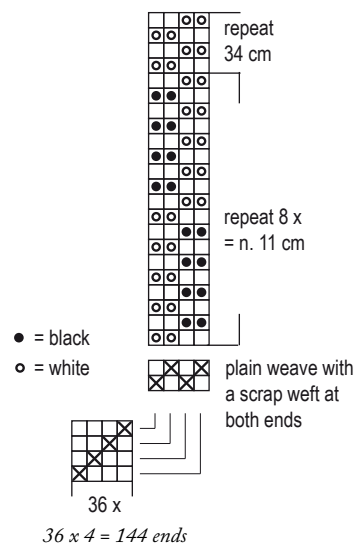
#### WEAVING INSTRUCTIONS

Leave 8 cm of length for the finishing at the ends of the placemats. The warp ends are finished by tucking them behind the wefts in the direction of the warp. Weave approx. 2 cm with scrap weft at both ends. Start the placemat with white weft yarn. Throw 4 times by alternating white and black weft yarn. Change the colour of the square by throwing white 2 times. Weave 16 black and white rows = 11 cm. Weave the rest of the placemat with white. = 34 cm.



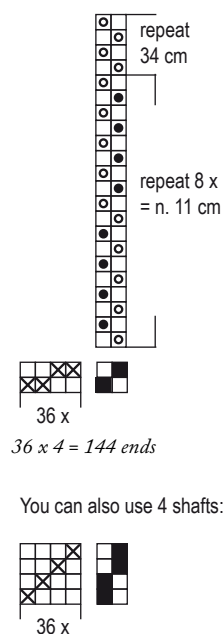
Black and white  
CHEQUERED FLAG

TABLE LOOM



© mallikerta

FLOOR LOOM



The woven length of the fabric is 45 cm.

The sett is 13 picks/cm.

Taper the weft tail when starting, finishing, and joining the wefts. Divide the weft tail by the length of approx. 7 cm in two parts and cut off the other part. The joints of strongly different coloured wefts stick out if not tapered.

FINISHING

Threading warp ends back to the fabric is a neat and durable finishing for the placemats. The ends of the tablemat narrow slightly.

End the threads by tucking them behind the wefts in the direction of the warp. Use a blunt needle. Thread always two warp threads at a time under the next weft float. Trim the tails. *Tip:* Thread every other pair of warp ends slightly longer up to smoothen the ending line. Press the placemat through a damp cloth. ▶

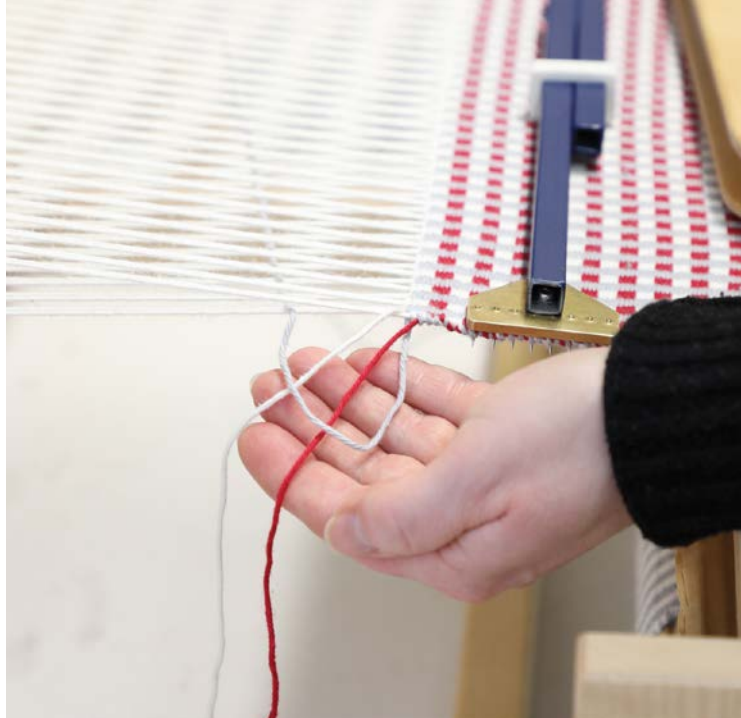
## How to thread the warp ends back to the woven fabric

Weft-faced rep placemats can be finished by threading the warp ends back to the fabric. Use a blunt point needle with a large eye.

1. Leave 8 cm length of warp for finishing at both ends of the placemat. Weave the length between the placemats loosely with some scrap weft.
2. Cut the placemats apart.
3. Thread the warp ends back to fabric systematically behind the next weft floats 2 threads at a time to the length of 2 - 3 cm. Unravel the scrap wefts at the same time. Don't make knots!
5. Cut the tails of the threads from the surface. Press the placemat through a damp ironing cloth.





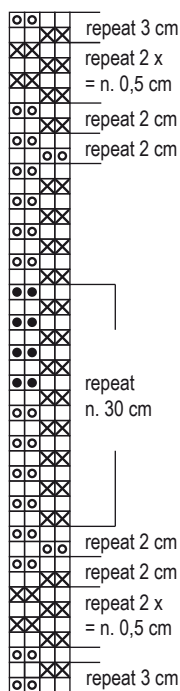


## Polka dot tablemats

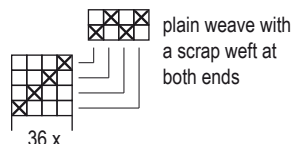
Size finished 33 x 44 cm + fringes á 5 cm

Polka dot placemats

TABLE LOOM

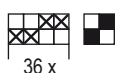
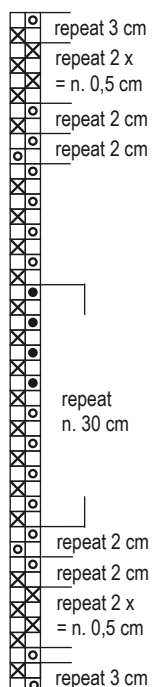


X = grey  
• = red  
o = white



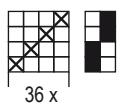
36 x 4 = 144 ends

FLOOR LOOM



36 x 4 = 144 ends

You can also use 4 shafts:



36 x

AMOUNT OF WEFT YARN NEEDED for 1 place mat

Cotton Soft Novita, 50 g = 120 m, 100 % cotton

405 grey (pearl) 50 g

010 natural white 40 g

549 red (christmas) 20 g

### WEAVING INSTRUCTIONS

Leave the 10 cm length for the finishing at the ends of the placemats. Weave approx. 2 cm with scrap weft at both ends. Weave by alternating two colours when there is two colours in use. Leave always the natural white and red weft under the grey weft at the edges in the three coloured middle. See the picture up left.

*Weave:*

3 cm natural white and grey

0,5 cm grey (8 picks)

2 cm natural white and grey

2 cm natural white

Repeat 30 cm: alternately 4 x natural white and grey and 4 x red and gray

4 x natural white and grey

2 cm natural white

2 cm natural white and grey

0,5 cm grey (8 picks)

3 cm natural white and grey

### FINISHING

Tye overhand knots with 4 ends. Cut the fringe even. Press the placemats through an damp ironing cloth. ●