

# Tracks and beads 3760

[www.theweaverspick.com](http://www.theweaverspick.com)

[www.mallikerta.fi](http://www.mallikerta.fi)

© mallikerta



@mallikerta



mallikerta



@mallikerta

*Soft cotton blankets*

# Tracks and Beads

## 3766

These blankets have a warm feeling to them. We used a thick cotton yarn to create a wonderfully soft surface and fluffy texture on the fabric. Winding the warp was easy when we slipped the yarn balls into the baskets. In the structure of the fabric, the plain weave and thread floats form a beautiful surface on both sides of the cover.

The warp Cotton Soft Novita, 010 natural white,  
50 g = 120 m, 100 % cotton (tex. n. 410)  
Warp width 100 cm  
the sett 4ends/cm  
number of yarn ends 400  
length 4,34 m  
amount of warp yarn needed 704 g

Reed 1 per dent in a 40-dent reed (metric) = 40/1  
Structure Cord weave  
The weft Same as the warp

*Finished size 87 x 151 cm*

### *Tracks of colour*

#### WEAVING INSTRUCTIONS

Weave 6 cm plain weave for the hem with grey (405) thread.  
Obs! Weave the other end of the blanket with natural white (010). Weave 4 picks with one colour and 4 picks tabby between the colour stripes. A dark and a light colour alternates.

*Blue stripes:*

Repeat 2 x:

grey plain weave

blue colour stripe (first throw from the left side)

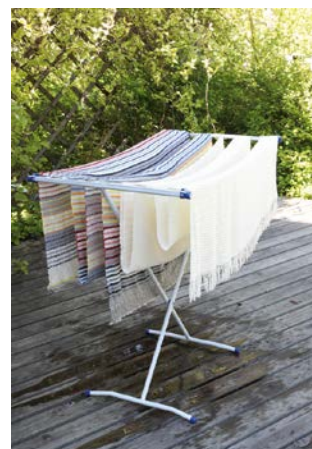
grey plain weave

dark blue colour stripe (first throw from the right side)

Repeat 2 x:

natural white plain weave

blue colour stripe ▶



Fold the blanket on a drying rack and change the places of plaits res times while drying.



#### SELVAGES

Do not cut the colour weft while weaving the plain weave. Bind it with the first second colour pick against the selvage and again with the last colour pick. Do the same with the other colours at the other edge. You can also bind the colour weft in the middle of the plain weave section if you find it useful.



natural white plain weave

dark blue colour stripe

Weave the red and yellow sections in the same way.

#### *The colour order of the stripes*

blue and dark blue

light red and red

light yellow and yellow

Repeat 4 x

+ blue and dark blue to the end of the blanket

The sett in hem is 5 picks /cm. The sett in colour stripes is 6 – 7 picks/cm and the sett in plain weave is 5 picks/cm. 2 colour stripes + 2 plain weave sections = 16 picks = 3 cm. The height of one colour section is 13 cm. The woven length is 169 cm + hems á 6 cm. Size of the loom was 92 x 156 cm after wet-finishing 87 x 156 cm.

*Tip:* Throw the plain weave weft from the same side as you press the treadle, and you'll know which of the plain weave treadles is in turn. When you are pressing the left treadle, throw the weft from the left side and when pressing the treadle on right, throw the weft from the right side.

#### AMOUNT OF WEFT YARN NEEDED

405 grey 114 g

010 natural white 104 g

114 blue 33 g

171dark blue 34 g

504 light red 29 g

549 red 29 g

203 light yellow 29 g

269 yellow 27g

399 g in total

#### FINISHING

Steam or press the blanket fabric and hems. Sew the hems by hand using a cotton thread. Wash 40 – 60°C. Dry flat. Shape while slightly damp, steam or iron through an ironing cloth. ▶

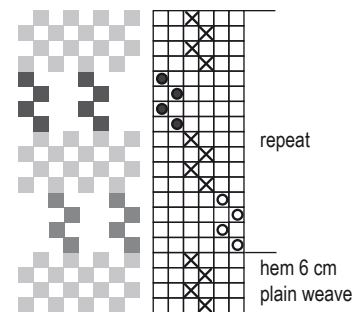
#### TRACKS OF COLOUR

Treadling:

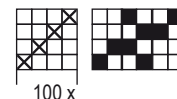
× = grey / white

● = dark colour

○ = light colour



Take a thread out from the one outmost heddle on both sides.



© **mallikerta** 100 x 4 = 400 threads

Finished size 84 x 142 cm

## Beads, white blanket

### AMOUNT OF WEFT YARN NEEDED

Cotton Soft Novita, 50 g = 120 m, 100 % cotton, Novita  
010 natural white 500 g

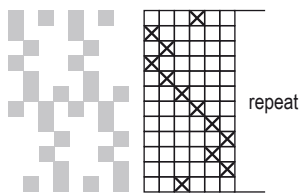
### WEAVING INSTRUCTIONS

Leave 9 cm length for the fringes (short fringes). Weave the blanket according to the treadling order. The sett is approx. 7 picks/cm. The woven length is 168 cm, measured under tension. Size off the loom was 90 cm x 150 cm and after wet-finishing 84 x 142 cm. *Obs!* Use a stretcher right from the start as the fabric narrows a lot. Weave a header at the beginning with scrap weft (to be unravelled later).

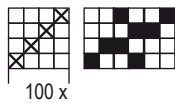
### FINISHING

Tye the ends with overhand knots. Cut the fringe to an even length. Steam or press the fabric. Wash 40 – 60°C. Dry flat. Shape while slightly damp, steam or iron through an ironing cloth. ●

BEADS,  
WHITE  
BLANKET



Take a thread out from  
the one outmost  
heddle on both sides.



100 x 4 = 400 threads



OPTIONAL PATTERN "DIAMOND"

Floor loom

repeat OR repeat

plain weave plain weave

Table loom