



## Long sauna seat cover

Finished size 37,5 x 132 cm

Weave 3 cms of plain weave in the beginning and end for the borders. Weave according to the treadling order with the same yarn as the warp. Turn the weft around the outmost warp end when there are two throws in the same shed consecutively. The density of the weft is 7,5 picks/cm. The woven length is 158 cm including the borders. The size of the fabric before wet finishing 41,5 x 152 cm and after wet finishing 37,5 x 136 cm.

**AMOUNT OF WEFT YARN NEEDED** for one runner  
Linen 8/1, tex 206, 1 kg = approx. 5 000 m  
unbleached 105 g

## Short white sauna linens

Finished size 38 x 54 cm, 2 pcs

Weave 3 cms of plain weave in the beginning and end for the borders. Weave with bleached linen 8/1 according to the treadling order. Turn the weft around the outmost warp end when there are two throws in the same shed consecutively. The density of the weft is 7,5 picks/cm. The woven length is 66 cm including the borders. The size of the fabric before wet finishing 41,5 x 64 cm and after wet finishing 38 x 58 cm.

**AMOUNT OF WEFT YARN NEEDED** for one piece  
Linen 8/1, tex 206, 1 kg = approx. 5 000 m  
bleached 46 g

# Single yarn linen warp 3769

*The entire warp has been made with the same yarn*

The warp Linen 8/1, unbleached, tex 206,  
1 kg = approx. 5 000 m

Warp width 43,5 cm  
the sett 8 ends/cm  
number of warp ends 348  
length 4,3 m  
amount of warp yarn needed 318 g

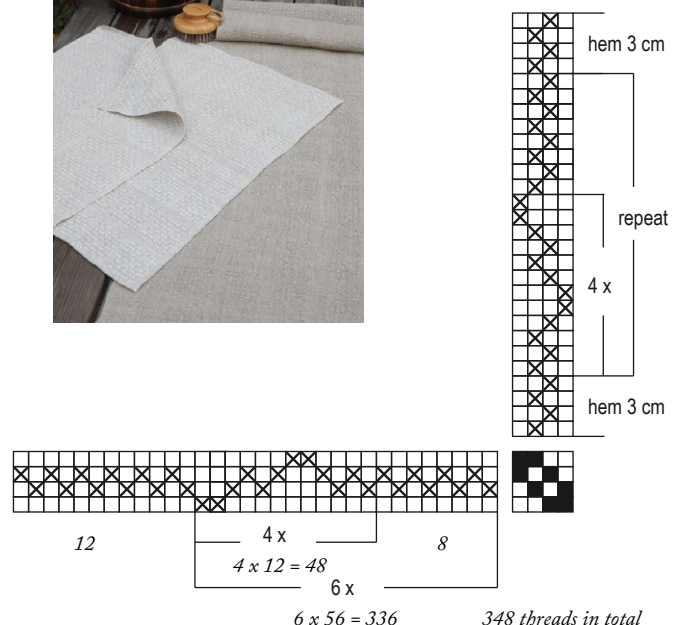
Reed 2 per dent in a 40-dent reed (metric) = 40/2  
Structure Lace weave



[www.theweaverspick.com](http://www.theweaverspick.com)

[www.mallikerta.fi](http://www.mallikerta.fi)

© mallikerta





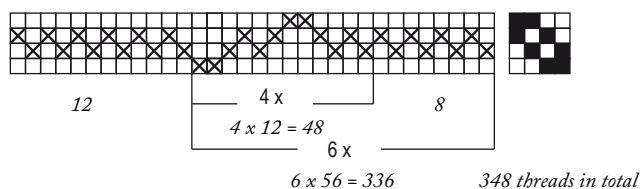
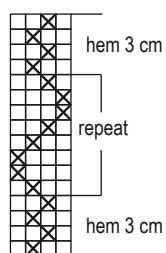
## Line linen table runner

Finished size 38 x 59 cm

Weave 3 cms of plain weave in the beginning and end for the borders. Weave with bleached linen 16/2 according to the treadling order. Turn the weft around the outmost warp end when there are two throws in the same shed consecutively. The sett is 7,5 picks/cm. The woven length is 70 cm. The size of the fabric before wet finishing 41,5 x 68 cm. Plain weave stripes might tighten more than the patterned stripes. Take the fabric off the loom after one runner and tie on the warp again to have an even tension. You can also weave plain weave stripes as in the warp to avoid tightening.

### AMOUNT OF WEFT YARN NEEDED

Linen 16/2, tex 103x2, 1 kg = approx. 4 900 m unbleached 52 g



### SEWING THE BORDERS

Sew 3-step zigzag in the ends of the fabric. Sew the border by hand using a thin but strong linen thread. You can finish the ends either before or after the wet finishing. We however recommend finishing the ends before wet finishing as it is easier to handle the fabric and the width of the fabric is correct.

### WASHING THE LINEN FABRICS

Wash the fabric in lukewarm water. Use detergent and rinse carefully. Unbleached linen gives out its natural color in the first wash. Set the fabric to dry on a flat surface or around a tube that is resistant to water. In this case, make sure the fabric is tied around it tight enough. Press the fabric or iron it while it is still damp. Use an ironing cloth. After the first wash, you can start machine washing the cloth. Machine wash in 40°C. Wash only linen cloths in the same load as linen gives out lint easily. The linen cloth is rough at first but it softens with time. The unbleached color lightens with every wash.

The commercial use of the weaving patterns and the sharing of designs online is forbidden. All contents of The Weaver's Pick are copyrighted by Mallikerta MH.