

Double bed cover

Finished size 246 x 267 cm

Chenille strip bed cover 3770

This double bed cover has been woven as a double width weave structure. The tufted stripes that soften the surface of the cover are made with chenille strips that we have woven ourselves, and the rest of the weft is cotton fabric strip. The warp is 6-ply cotton twine. The cover can also be woven from poppana or chenille yarns

The warp 6-ply Liina Cotton Twine, tex 30x6,
1 kg = n. 5 300 m, unbleached

Warp width 130 cm
the sett 8 ends/cm
number of warp ends 1040
length 4,72 m (on cover and pillow cases)
amount of warp yarn needed 945 g

Reed 2 per dent in a 40-dent reed (metric) = 40/2
Space out the left selvage: 1, 0, 1, 0, 2, 2...

Structure Double width weave

WEAVING INSTRUCTIONS

The colored stripes and tuft chenille stripes doesn't repeat in the same way in the fabric. Use the cotton fabric strips between the chenille strips according to the color scheme, see page 16. This softens the pattern in the cover and the overall look is calmer.

The chenille strip is cut after one throw in the upper layer and one throw in the lower layer and finished in the edge. Unravel the fabric from the chenille strips that hang outside of the cover selvage and finish with a knot. Finish the ends of the knots in the shed. The chenille strip can also be continued in the middle of the fabric, but it is more practical to cut the strip after each weft in this cover fabric.





www.theweaverspick.com

www.mallikerta.fi

© mallikerta

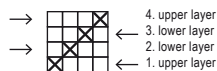
DOUBLE WIDTH WEAVE
CHENILLE STRIP BED COVER

Treading:

- X = cotton strip
- o = chenille strip

Cut and finish in the shed the chenille strip after one weft (1 throw in upper layer and 1 throw in lower layer).

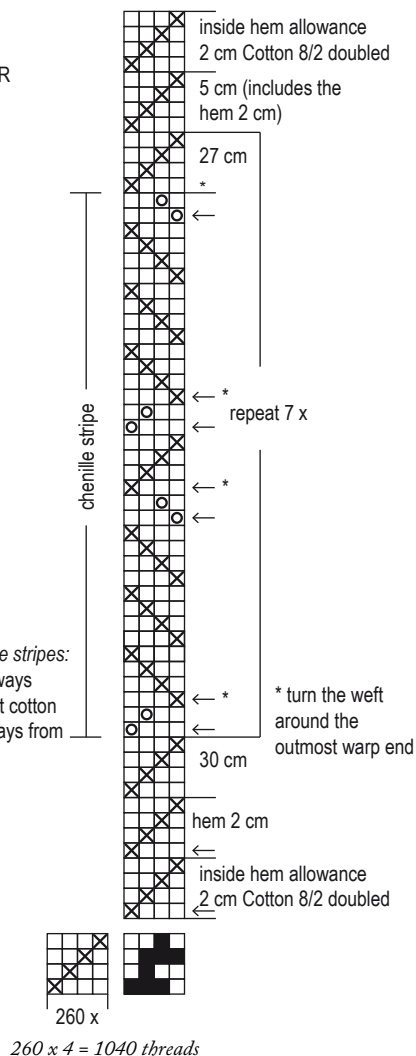
Direction of the throw



Exception: Directions in *chenille stripes*:
Throw the first chenille strip always from the right edge and the first cotton strip after the chenille strip always from the right edge.

The right edge is open and the left edge is closed.

Sleying the reed:
Space out the left edge
1, 0, 1, 0, 2, 2 ...



Leave 10 cm of the weft for finishing in both ends of the fabric. The sett is 3 + 3 picks/cm (3 picks in one fabric layer).
- 2 cm inner hem allowance with doubled unbleached Cotton 8/2 -32 cm with multicoloured cotton strips (includes the hem 2 cm)
Start now the first **Chenille stripe*. Weave a chenille stripe at a distance of 27 from each other. In these chenille stripes the color of the cotton strip (between chenille stripes) is what is in turn in the color order.

- 31 cm multicolored cotton strip
- 7 cm white cotton strip
- 7 cm multicolored cotton strip
- 7 cm white cotton strip
- 46 cm multicolored cotton strip
- 7 cm white cotton strip
- 7 cm multicolored cotton strip
- = the middle of the cover

Weave the other end of the cover as a mirror image.

Remember to weave 32 cm with cotton strips after the last chenille stripe as in the beginning. There will be 7 chenille stripes in total. The woven length is 281 cm + inner hem allowance 2 + 2 cm.

* *Chenille stripe 7 cm*: (1 chenille weft = 1 throw in the upper layer and 1 throw in the lower layer)

- 1 chenille weft
- 6 cotton strip wefts (= 6 throws in the upper layer and 6 in the lower layer according to the treading order)
- 1 chenille weft
- 2 cotton strip wefts
- 1 chenille weft
- 6 cotton strip wefts
- 1 chenille weft

The required length for one chenille strip is 5,98 m. The leftover of one chenille strip is around 45 cm. Please see page 23 for weaving instructions of chenille strips.

FINISHING

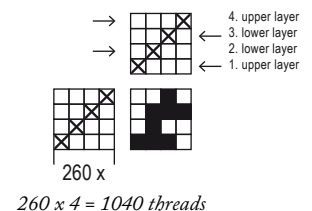
Tie the warp ends 2 + 2 with overhand knots. Sew the borders so that only the cotton section is inside the hem. The height of the border is 2 cm. Remove the lint that may come out of the fabric. The cover will shrink approximately 5 – 8 % after washing.

DOUBLE WIDTH WEAVE
WITHOUT THE CHENILLE STRIPS

PILLOW COVER FABRIC on page 19

The right edge is open and the left edge is closed.

Sleying the reed:
Space out the left edge
1, 0, 1, 0, 2, 2 ...





The cotton strip is cut 10 mm wide from thin but dense fabric. The cut is straight along the threads but cut thick fabrics diagonally. The same cotton fabric is used in the chenille strips and as the weft in the bed cover.

AMOUNT OF WEFT YARN NEEDED

Cotton 8/2 boubled, unbleached 35 g (inner hem allowance).

Self cut cotton strip, width 1 cm, thin cotton sheet fabric

- white 0,46 kg
- multicoloured (checkered) 2,27 kg

Cotton strips 2,73 kg in total

Chenille strips, self-made multi-strand yarn made of cotton yarns

and cotton strips (see page 23 for weaving instructions)

- 14 pcs á 5,98 m chenille strip

The thin and soft fabric can be cut straight along the threads creating lighter strips and fabric. The fabric can also be cut diagonally. The fabric that has been cut diagonally will make the fabric denser and heavier. Choose which one is better for your project! You can also weave from ready made poppana weft.



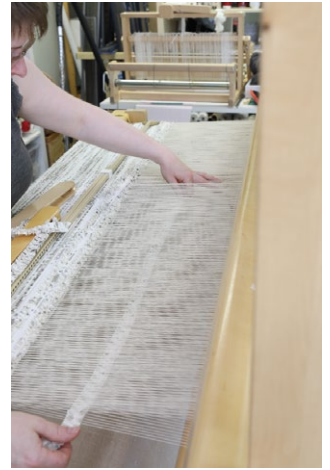
www.theweaverspick.com

www.mallikerta.fi

© **mallikerta**



1.



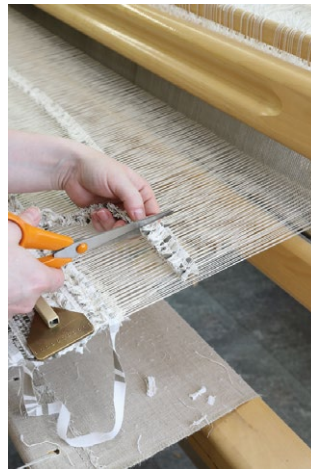
2.

How to weave chenille strips into the cover fabric

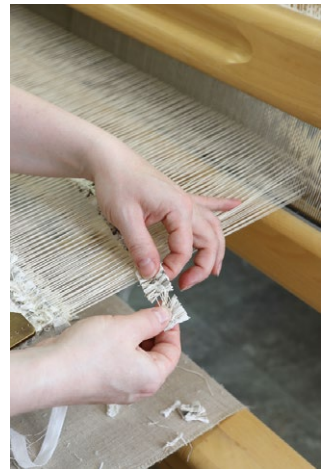
The cover fabric has been made with chenille strips alternated with throws of self cut strips. Cut the chenille strip after one throw in upper shed and one throw in lower shed to avoid a loop in the edge of the fabric.

1. Throw the chenille strip into the upper shed. Finish the end of the chenille strip in the shed. Make sure that the strip is not twisted. Beat the weft in.
2. Throw the weft into the lower shed.
3. Cut the weft but leave a few cms of material for finishing the edge.
4. Unravel the end of the weft to the edge of the fabric. You're left with only the warp ends.
5. Tie the warp ends of the strip.
6. Finish the warp ends in the shed and beat the weft in.

The commercial use of the weaving patterns and the sharing of designs online is forbidden. All contents of The Weaver's Pick are copyrighted by Mallikerta MH.



3.



4.



5.



6.