

DESIGN OF PATTERN **Marjatta Hirvi** WEAVER **Kirsi Vakkari**

www.theweaverspick.com

www.mallikerta.fi

© **mallikerta**

Finished size 49 x 136 cm

Stars 3774

The warp Cotton 16/2, unbleached, tex 36x2,
1 kg = approx. 13 640 m
Warp width 50,7 cm
the sett 16 picks/cm
number of warp ends 811
length 3,35 m (approx. 2 m finished fabric)
amount of warp yarn needed 195 g

Reed 2 per dent in a 80-dent reed (metric) = 80/2
Structure Undulating twill, traditional pattern

AMOUNT OF WEFT YARN NEEDED FOR ONE METER

Linen 16/1, tex 103, 1 kg = approx. 11 200 m
approximately 85 g for one meter (the sett 16 picks/cm)

You can use also linen 8 as a weft. The motif will be slightly longer.
Linen 8 or tow linen 8, tex 206, 1 kg = approx. 5 120 m
approximately 120 g for one meter (the sett 12 picks/cm)

RED TABLE RUNNER

Finished size 49 x 136 cm

Weave 140 cm according to the treadling order. The woven length is 140 cm, including the hems. The sett is 16 picks/cm.

Amount of weft yarn needed for one table runner:

Aivina 16/1, tex 103, 1 kg = approx. 11 200 m

Garnhuset i Kinna

49 burgundy red 124 g

DARK GREY SMALL TABLE CLOTH

Finished size 49 x 34 cm

Aivina 16/1, tex 103, 1 kg = approx. 11 200 m

Garnhuset i Kinna

228 dark grey 32 g

FINISHING

Sew 3-step zigzag on the ends. Match the pattern motifs of the hem and the fabric and sew the hem by hand.



The beautiful star pattern tablecloth was found at an old thrift store. The pattern is much the same as the familiar Snowflake, but the central motifs are different. We adapted the pattern and wove it with a thin colored linen yarn into an unbleached cotton yarn warp.





In a coloured sample weave the weft is linen 16/1 colour number 88 and in a natural colour sample the weft is linen 8/1. The motifs are longer in natural colour sample for the linen 8 is heavier than linen 16/1.



Weaving with one shuttle is fast and you have a runner ready in no time

Narrow table runner:

The right border 24 threads

Repeat 5 x 132 threads = 660 threads

Balance 103 threads

Left border 24 threads

811 threads in total : 16 = width 50,7 cm

Reed: 2 per dent in a 80-dent reed (metric) = 80/2

The warp yarn: Cotton 16/2, 1 kg = approx. 13 640 m
Amount of warp yarn needed for one meter is approximately 60 g. This width is in the pictures.

Wide table cloth:

The right border 24 threads

Repeat 17 x 132 threads = 2244 threads

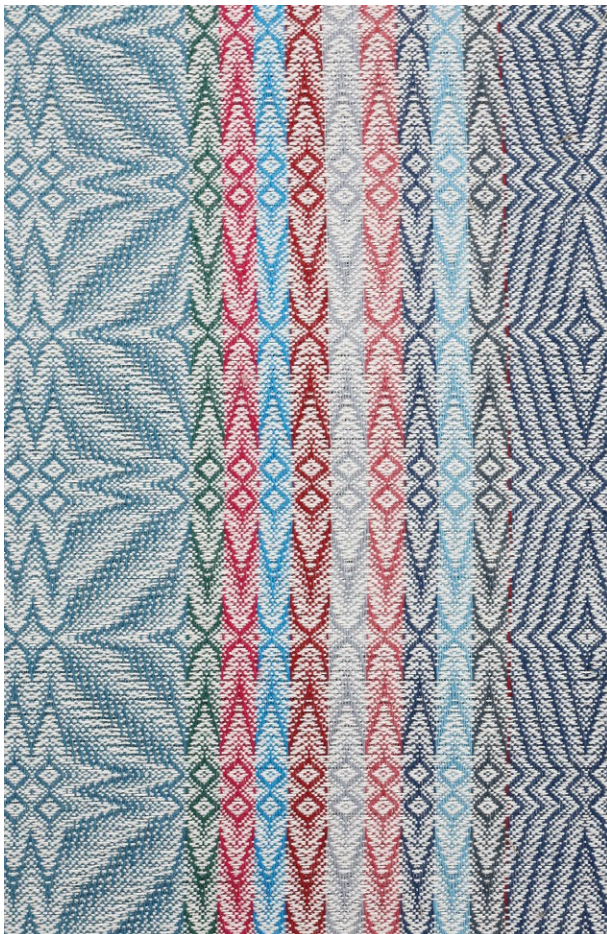
Balance 103 threads

Left border 24 threads

2395 threads in total : 16 = width 149,7 cm

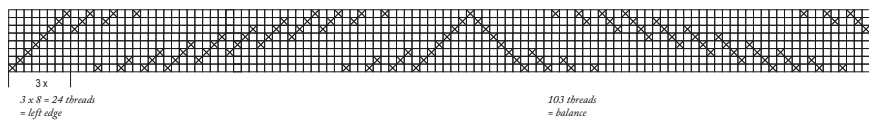
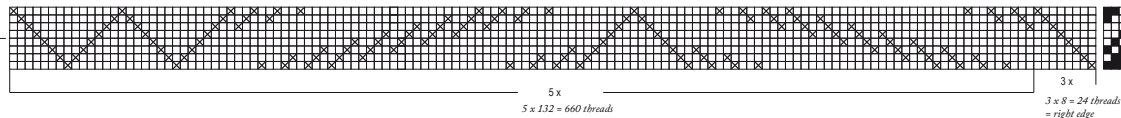
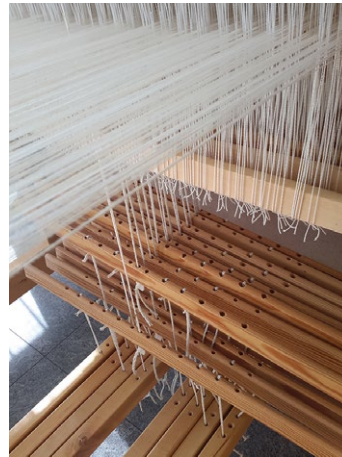
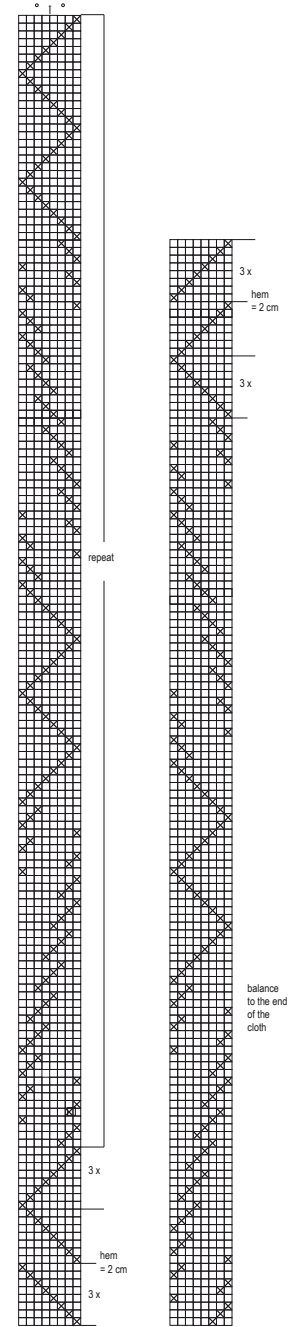
Reed: 2 per dent in a 80-dent reed (metric) = 80/2

The warp yarn: Cotton 16/2, 1 kg = approx. 13 640 m
Amount of warp yarn needed for one meter is approximately 175 g.
There is no picture of table cloth in this width.



The star motif fabric is woven with a one weft that is the same strength as warp threads. The colors of the warp and the weft mix well in a thin cloth. Warp is wound of cotton yarn and the weft is linen yarn. The unbleached warp lightens the colour of the weft, so darker colours are also suitable for the weft. Try dark black colours as well a bright white for the weft. Colours from left to right:

- petrol 88
- green 57
- cherry rose red 47
- blue 89
- burgundy red 49
- grey 23
- rasberry red 38
- dark blue 86
- blue 80
- dark grey 228
- dark blue 86



The commercial use of the weaving patterns and the sharing of designs online is forbidden. All contents of The Weaver's Pick are copyrighted by Mallikerta MH.