

Pompom scarf

3777



Finished size 24 x 170 cm

Pompom scarf

3777

The warp **Esito Worsted Blanket Yarn, 7053 Peach**
tex 143x3, 1 kg = approx. 2 300 m

Loimen width 30 cm
the sett 3 threads/cm
number of yarn ends 90
length 2,7 m
amount of warp yarn needed 103 g

Reed 1 per dent in a 30-number reed (30/1) metric

Structure Cord

The weft Same yarn as the warp

AMOUNT OF WEFT YARN NEEDED

Esito Worsted Blanket Yarn, tex 143x3, 1 kg = approx. 2 300 m,
7053 Peach 102 g

WEAVING INSTRUCTIONS

Start and finish by weaving 3,5 cm plain weave for a the hem.
Weave 190 cm according to the treadling order using the same
yarn as in the warp. The sett is 4 threads/cm and plain weave
in hems 5 threads/cm.

The fabric was 26 x 175 cm + hems á 3,5 cm off the loom.

Size of the scarf 24 x 170 cm after wet-finishing.

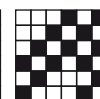
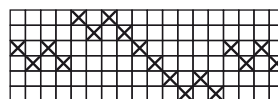
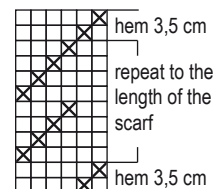
FINISHING

Sew the ends with rather dense straight stitches. Sew the
hems by hand using one or two plies of the wool yarn. Make
eight tassels from the scarf thread and fasten them to the ends
of the scarf by crocheting. ●

TASSELS

Make 8 tassels with a diameter of approx. 4 cm.

Mark the distance between 6 cm on the head of the scarf.
Make a starter loop at the corner of the edge, make 9 single
crochet and to the next stitch add a tassel from its fastening
thread. Make 10 single
crochet and use the next stitch to attach the crochet
to the edge of the scarf, the first mark at 6 cm from
the edge. Attach the remaining tassels in the same
way. Pull the ends of the fastening threads inside the
tassels. Finish the starting and ending threads of the
crocheted ribbon inside the hem.



$$4 \quad 7 \times 12 = 84 \quad 2 = 90 \text{ threads in total}$$