

DESIGN OF PATTERN **Marjatta Hirvi** WEAVER **Kirsi Vakkari**

www.theweaverspick.com

www.mallikerta.fi

© **mallikerta**

Light brown sweater

Evening sky blue sweater



Sweater x 2

3778

We visualized two patterns of sweaters woven on looms. For one sweater we wound a wide warp on which we weaved sleeves side by side. On another narrower warp, we weaved the sleeves one by one. With the dimensions of the instructions, the size of the sweater is from 38 to 42, but you can easily change the size of the pieces.

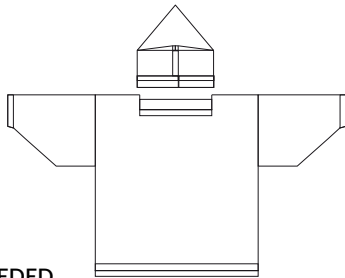
EVENING SKY BLUE SWEATER

The warp Double Sunday, DK-weight Merino Wool

Warp width 73,7 cm
the sett 3,5 threads/cm
number of warp ends 258
length 4,3 m

Reed 1 per dent in a 35-number reed, metric (35/1)

Structure Cord



AMOUNT OF YARN NEEDED

Double Sunday, 108 m = 50 g, Sandnes Garn
DK-weight non-superwash Merino Wool yarn
6051 Evening sky (Kveldshimmel)
warp 477 g
weft 460 g

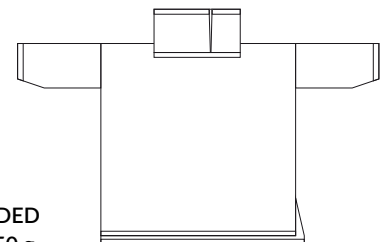
LIGHT BROWN SWEATER

The warp Double Sunday, DK-weight Merino Wool and
warp edges Sunday, Fingering weight Merino Wool

Warp width 89,7 cm
the sett 3,5 threads/cm
number of warp ends 314
length 3,3 m

Reed 1 per dent in a 35-number reed, metric (35/1)

Structure Cord



AMOUNT OF YARN NEEDED

Double Sunday, 108 m = 50 g,
Sandnes Garn, DK-weight non-superwash Merino Wool yarn
3021 Light beige (Lys beige)
warp 460 g
weft 400 g

Sunday, 203 m = 50 g, Sandnes Garn

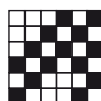
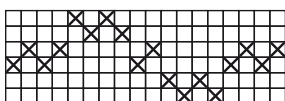
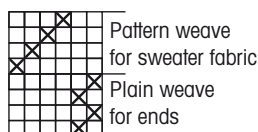
Fingering weight non-superwash Merino Wool yarn
3021 light beige (Lys beige)
warp 9 g
weft 34 g

INSTRUCTIONS FOR WINDING THE WARP

6 threads Sunday (thin)
302 threads Double Sunday (thick)
6 threads Sunday (thin)
314 threads in total

EVENING SKY BLUE SWEATER

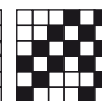
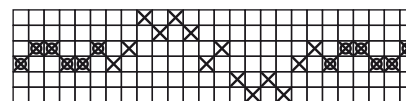
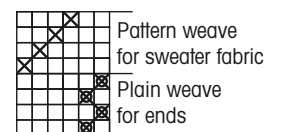
× = Double Sunday



4 21 x 2 = 252 2 = 258 threads

LIGHT BROWN SWEATER

× = Double Sunday
x = Sunday (thin yarn)



6 (thin) 2 25 x 12 = 300 6 (thin) = 314 threads

WEAVING INSTRUCTIONS FOR BOTH SWEATERS

The cloth will draw up from its woven width already on looms. Weave a 5 cm pattern structure of weft yarn or similar thread to get the right width to the cloth. After that start weaving the ends with the plain weave. Use the stretcher and adjust it to the same width as the warp in the reed.

The shirttails, necklines, armholes, and collar edges of the blouse are finished by threading back the warp ends into the woven fabric. Therefore, 6 cm per 1 end must be left at the ends of these pieces for this finishing. Weave this finishing allowance with a removable scrap yarn, similar to the weft. The shoulders and sleeve heads are finished with a straight machine stitch, so there is no need to leave any finishing allowance. See drawings on pages 21 and 23.

The structure is plain weave on hemlines, neckline edges and armholes. - 1.

The neckline opening and narrowed areas at the sleeves are woven with an extra scrap yarn to be removed. - 2.

Use the same yarn or similar yarn as the fabric. The opening between the fabric and the extra woven part is closed with sewn stitches as the weaving progresses. The stretcher can then be used normally, and the pieces will be in the correct shape. - 3.

Continue the weft on the edge of the warp, not on the center. Split half the yarn tail and cut off one half. Carefully overlap the thinned tails and beat the weft in. Alternatively, at the edges of the seams, leave the ends of the wefts outside the edge of the warp. When finishing, thread the ends to the seam. Continues ▶



1.



2.



3.



4.



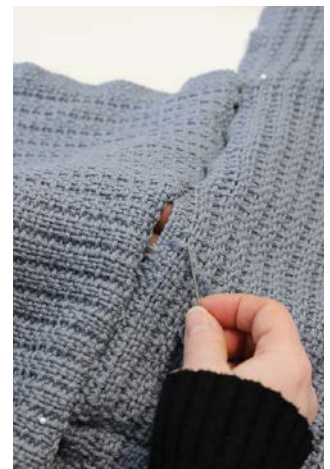
5.



6.



7.



8.

FINISHING FOR BOTH SWEATERS

Continues ▶ *Shoulders and upper edges of the sleeves*

Machine sew a straight stitch twice over the shoulders of the front and back pieces and at the top of the sleeves before cutting the pieces apart. - 5.

Unravel the stitches joining the pieces. - 6.

Tails, neckline, and collar edges

Use a blunt point needle for the threading. Unravel the extra weft at the bottom edges of the front and back pieces and thread the warp threads back into the fabric up to the top of the end woven with tabby treadles. Don't tie the knots! -7.

In the same way, thread the neck openings and armholes of the sleeves. Thread on the back side of the fabric. Carefully cut off the thread tails. Also thread the warp ends of the decreased edges of the sleeves back into the fabric so that the edge binds. See page 23. Thread along the edge so that the threads remain in the seams. Alternatively, you can machine sew two straight stitch lines on the edge. First tie the warp threads 1 + 1 with overhand knots. Turn the warp tails over the fabric and sew them on the fabric lightly by hand. After the machine stitch, carefully cut off the warp tails and remove the supporting stitches.

Assembling the sweaters

Sew a light brown sweater with a thin Sunday yarn and a blue sweater with two strands of the Double Sunday yarn.

Pin the edges of the pieces right side facing. The seam will be neat if the stitches are on the plain weave sections, not in the patterned fabric. - 8.

Sew the shoulder seams of the front and back pieces. Face the shoulder seam and the middle of the sleeve head and pin. Pin and sew the sleeve in its place. Sew side seams. Leave a slit of about 5 cm in the light brown blouse. The seam of the blue blouse is sewn all the way down. The back piece is longer than the front piece. Sew the sleeve seams.

Light brown sweater: Fit the collar piece inside the neckline opening the plain weave sections facing and pin. The opening in the collar is on the left side approx. 3 – 5 cm from the shoulder seam. Gather the collar fabric at the corners of the neckline. Tack in place. Sew the lower edge of the collar to the neckline. Evening sky lue blouse: The collar piece is sewn with the hood. The hood is not attached to the sweater.

Wet-finish the sweater and place on a level to dry, e.g., on a towel. Handle the fabric with care! The sweater stretches at first but bulls back into the right shape when it dries. ▶

Weave a sample

There are many types of wool yarns, and they act in different ways, even if they were same the weight. Weave a sample if you use some other yarn as in the instruction.

Weave samples when you design your own fabric. Use various treadling and densities. Write everything down already during weaving!

Measure the size of the samples before and after wet-finishing and calculate the shrinkage of the fabric. Please note that a narrow sample can shrink a little differently than a wide fabric. If you wish, you can also weave two samples with the same methods and wet-finish only the other. In the samples you can conveniently try different finishing methods.

Sweater fabric samples: The folded hems of woven fabric are often thick, so we were worried about finishing. We added plain weave to the edges and tried to see if a thinner thread could be used on the edges and ends. We finished the samples with fringe, straight stitching, zigzag stitching and threading the warp ends back to the fabric. After wet-finishing, we estimated that threading would be a good finishing method for the ends of the pieces and a straight stitch at the edges at the seams. A zigzag stitch stretched the edge, and the fringes didn't inspire us. In the light brown sweater, we used thinner yarn, but from the blue sweater we left out the thin yarn and wove the whole fabric with the same weight yarn. We wove the sweaters with the treadling to make the fabric surface smoother.



Tip: To save expensive yarns, you can wind the ending of the warp of some scrap yarn.



Pompom scarf on page 14 is woven according to the sample on the right.



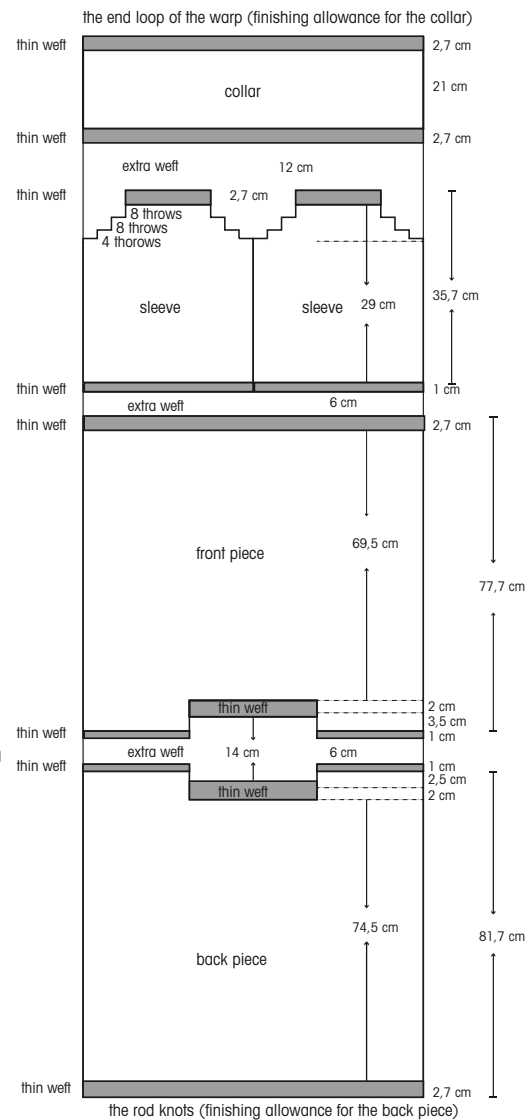
WEAVING INSTRUCTIONS FOR THE LIGHT BROWN SWEATER

Start and finish the pieces by weaving plain weave with the thinner thread, see drawing on the right. Weave the sweater fabric with the thicker thread according to the treadling order. The density of the plain weave is 8 picks/cm, and the pattern fabric has a density of 4.5 picks/cm. We measured the fabric slightly loosened.

Neckline: 16 vertical pattern stripes (8 x repeat of the threading) = shoulder – 18 pcs (9 x repeat) = centre – 16 vertical stripes (8 x repeat) = shoulder. Weave the neckline section with three shuttles or sticks. Weave the shoulders with thick yarn and pattern structure, and neckline edge at the centre with thin yarn using plain weave. Due to the different density, weave 1 throw at the shoulders and 2 throws to the neckline end at the same row. Twist the wefts together when they meet at the middle of the fabric. Opening of the neckline: Weave the opening at the centre with scrap yarn and shoulders with the thicker yarn. Do not twist the threads with each other.

Sleeves: The sleeves are woven side by side. Weave with two shuttles, do not twist the wefts around each other. Sew the opening shut between the sleeves with a needle while the work progresses. Weave the area outside of the sleeve fabrics with a scrap yarn, do not twist the wefts around each other. Make a narrowing width of one vertical pattern stripe at the intervals of the throws marked on the drawing. First 4 throws one vertical pattern stripe (a half repeat of the threading) woven with scrap weft and then 8 and 8. See drawing on the right. ▶

Light brown sweater



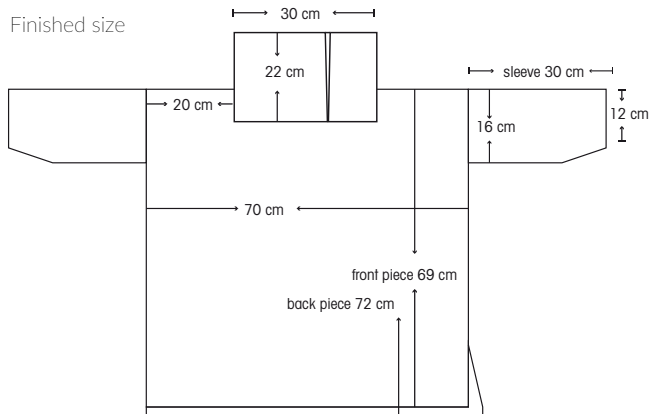
Weave the gray plain weave areas with the thin weft (Sunday).

At hems, neckline, armholes and collar finish the warp ends by threading back to the fabric. Leave 6 cm finishing allowance of the warp for this finishing. Weave this finishing length with extra scrap weft.

At shoulders and sleeve heads machine sew straight stitches. These ends doesn't need a finishing allowance.

www.theweaverspick.com

© mallikerta





WEAVING INSTRUCTIONS FOR THE BLUE SWEATER

See also pictures on pages 19 - 20.

Start and finish the pieces by weaving plain weave with the thinner thread, see drawing on the next page. Weave the sweater fabric according to the treadling instructions. The density is 4,5 picks/cm.

We measured the fabric slightly loosened.

Neckline opening

12 vertical pattern stripe (6 x repeat of the threading) = shoulder – 18 vertical stripe (9 x repeat) = neckline edge – 12 vertical stripe (6 x repeat) = shoulder.

Weave the neckline with one shuttle: Press the pattern treadle down and throw the shuttle in the shed but lift out from the shed already at the edge of the neckline. Press the plain weave treadle down and insert the shuttle back into the shed and lift out at the other edge of the neckline. Press again the pattern treadle down and insert the shuttle back into the shed and out from the other edge of the warp. Weave 3 cm plain weave to the neckline opening edge.

After that continue with three shuttles or sticks: 1. shuttle for the shoulder, 2. shuttle for the neckline opening with scrap yarn and 3. shuttle for the shoulder. Don't twist the wefts with each other. Close the opening between the fabric and the extra woven area by sewing as the weaving progresses. This help you to use the stretcher normally and the pieces will be in the correct shape. See the drawing on the next page.

Sleeves

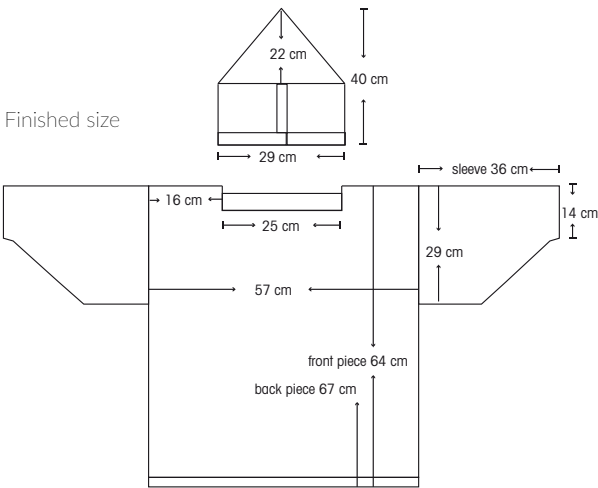
The sleeves are woven sequentially. Weave 25 cm and after that start a narrowing at both edges. Make a narrowing width of one vertical pattern stripe (a half repeat of the threading) at the intervals of 6 throws. Weave the area outside of the sleeve fabrics with a scrap yarn, do not twist the wefts around each other. Make 10 times narrowing on both edges. Weave 3 cm of plain weave after that for the armhole end.

Hood, not attached to the sweater

Weave the collar and hood according to the drawing on the next page. Thread the warp ends back to the edge woven with plain weave. Sew the top of the hood the right sides against each other. Fold the edges of the seams inside and sew closed. Turn 5 cm of the front edge on the right side of the hood and sew the section of the seam to the hood. Fold the collar piece twice and place the hood between the fabrics. Gather the hood fabric to make it three centimetres narrower than the collar. Sew by inserting the needle through all the pieces. Attach the buttons to the other edge of the collar on the inside and crochet the fastening loops on the other edge. The edges of the collar overlaps. ●



We finished the sleeves narrowing in two different ways. 1. Tie the warp ends together and thread back to the edge of the fabric. 2. Tie the warp ends together, turn the threads over the fabric and sew a straight stitch on edge of the fabric. Cut out the thread tails. Both ways work fine. Narrower sleeves can be reached by narrowing the warp. Take out warp ends from the work from both edges. Then leave the sleeves to the last pieces of the warp.



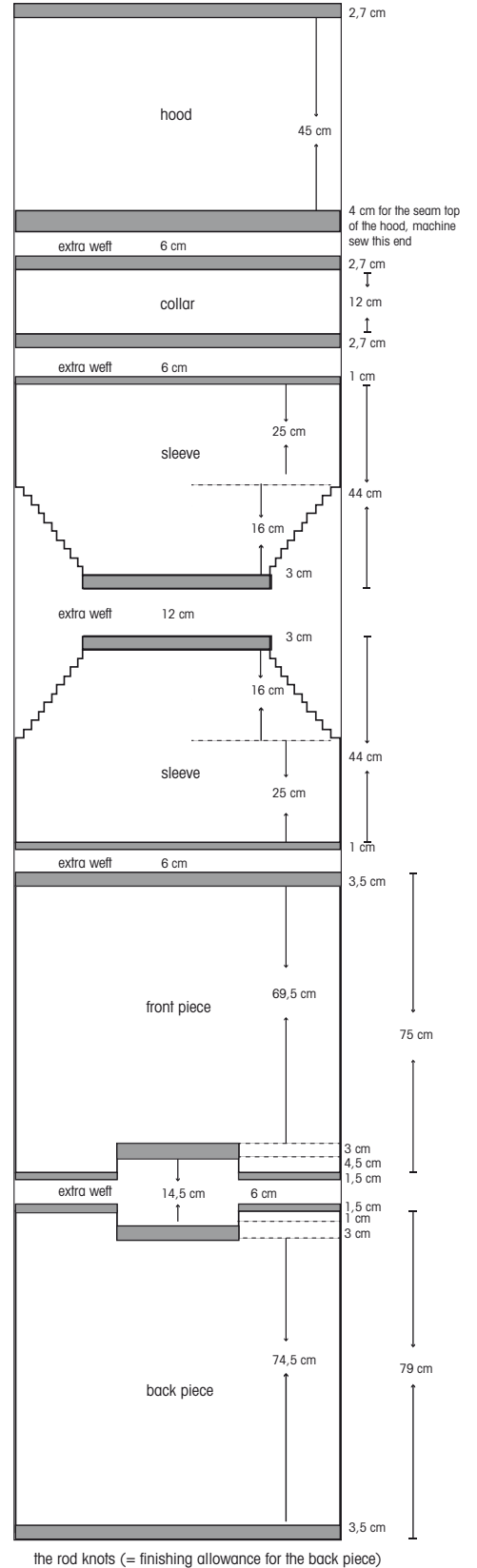
Finished size



The hood is sewn inside the twice folded collar piece. Buttons and crocheted fastening loops are hidden inside the collar edges. The hood is not fastened to the sweater.

Evening sky blue sweater

the warp end loop (finishing allowance for the hood)



Sleeves: Make a narrowing always after 6 throws. The narrowing is 1 vertical pattern stripe (a half of the threading repeat). Narrow 10 times.

Gray areas: Plain weave.

At hems, neckline, armholes and collar finish the warp ends by threading back to the fabric. Leave 6 cm finishing allowance of the warp for this finishing. Weave this finishing length with extra scrap weft.

At shoulders and sleeve heads machine sew straight stitches. These ends doesn't need a finishing allowance.