

*Spring flowering*  
3780





Finished size 76 x 177 cm

# Spring flowering 3780

The warp 12-ply Cotton Twine, tex 30x12,  
1 kg = approx. 2 560 m, black  
Warp width 84,8 cm  
the sett 2,5 ends/cm  
number of the warp ends 211 + 4  
amount of warp yarn needed 85 g / 1 m

Reed 1 per dent in a 25-dent reed, metric (25/1)  
Structure Summer & Winter weave



## WEAVING INSTRUCTIONS

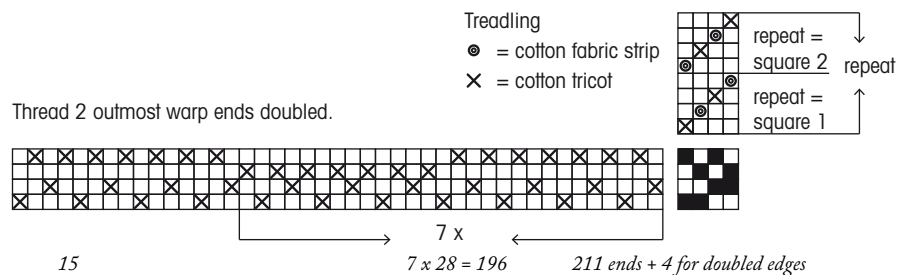
Leave around 15 cm for the finishing on both ends of the rug. Weave 2 - 3 cm of extra weft to support the end of the rug. Start and finish the rug with three shots of Cotton twine. Weave chequered according to the treadling instructions. The woven length is 178 cm.

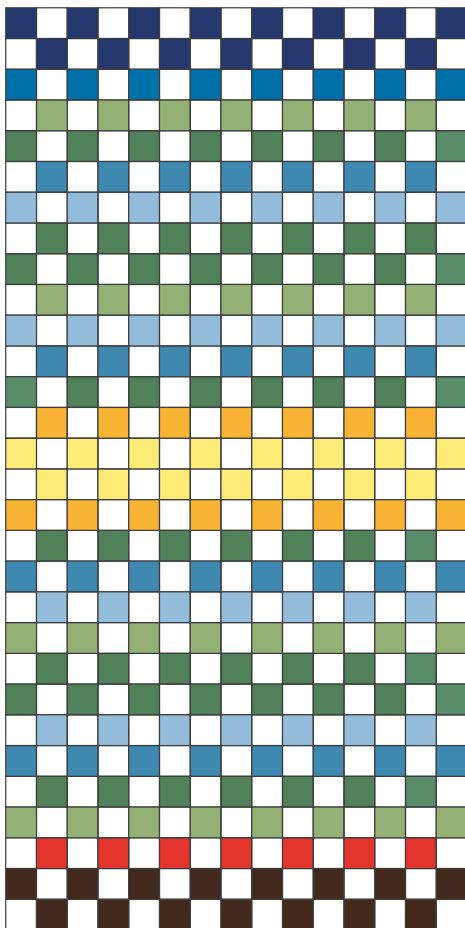
## FINISHING

Tye the warp threads using tight overhand knots. Thread the warp ends back to the rug between the wefts. ▶



Start and finish the rug by weaving a few centimeters of extra weft. The rug ends remains tight after the rug is taken off the loom. Finishing is easier and the ends of the rug become flat and tidy. Unravel the extra weft while tying the knots.





**AMOUNT OF WEFT NEEDED** for one rug

Cotton fabric strips, width 2 cm  
 light patterned cotton sheet fabric 1 200 g

T-shir yarn (Cotton tricot)

- dark blum 100 g
- melone red 60 g
- light green 210 g
- green 535 g
- blue 220 g
- light blue 230 g
- light yellow 120 g
- yellow 130 g
- dark blue 65 g
- blackish blue 145 g
- 1 815 g in total



Every other weft in the rug is a fabric strip cut from a patterned, light cotton sheet. Smoothly patterned, light but not white cotton strip weft combines all the strongly coloured squares. Reserve enough cotton sheets, for this rug we cut strips of about two duvet covers. ●