

A Winter story

3781



www.theweaverspick.com
www.mallikerta.fi

© mallikerta

Finished size 39 x 155 cm

A Winter story 3781

Weaving this table runner set our imagination in motion. In the stripes of the Winter story, we saw side straddle hops, pirouettes, and mint candies. Wind a long warp! Rosebath on 6 shafts produces a lot of different patterns, which can be further varied in different colours.

WEAVING INSTRUCTIONS

Weave three picks with 6-ply cotton twine at the beginning and the end of the table runner. The plain weave background weft is poppana, which is a long bias-cut strip of cotton fabric. The pattern weft is a quite thin velvet yarn. The woven length is 157 cm. We had floating selvages in this warp.

The treadling instructions and the colour order of the pattern motifs are on the next page.

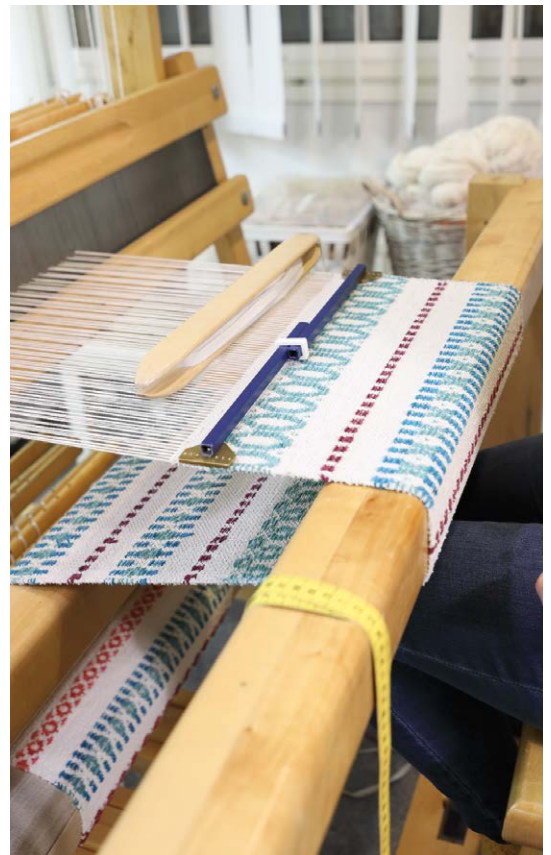
AMOUNT OF WEFT YARN NEEDED

Poppana, bias-cut cotton strip, width 10 mm
2204 greyish geige (caulck) 445 g

Velvet yarn, tex 555, 1 kg = approx. 1 840 m,
Garnhuset i Kinna
276 mint green 42 g
288 petrol green 23 g
213 blum red 13 g

FINISHING

Tye the warp threads 2 + 2 by using tight overhand knots.
Even the ends into the same length ▶



It is a good time to wind a warp for the poppana table runners.

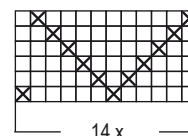
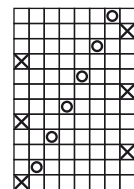
The warp 6-ply. Cotton Twine "Liina", tex 30x6,
1 kg = approx. 5 300 m, unbleached
width 42 cm
Warp the sett 4 ends/cm
number of warp ends 168 + 4
amount the warp yarn needed 33 g/1m

Reed 1 per dent in a 40-dent reed (metric) 40/1
Structure 6-shaft rosebath and tabby

WEAVING DRAFT

6-shaft rosebath

The treadling order for the table runner is on the next page.



14 x 12 = 168 threads



Tip

Change the lengths between the pattern stripes. Gather in some of the plain background between them. You'll get a new-look for the cloth, and it won't take much time to plan. Instead, it's a good idea to take out the crayons and take time for planning if you want to add different colors to the plain weave background. Outlining the heights of colors stripes on paper helps with the design.

WEAVING INSTRUCTIONS

Weave plain weave 5 cm at the both ends of the runner, and 3 cm between all the pattern stripes.

Oval motif stripe

Red dot stripe

Side straddle hop stripe

Red dot

Side straddle hop

Red dot

Mint candy

Red dot

Side straddle hop

Red dot

Side straddle hop

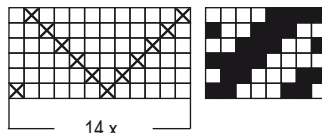
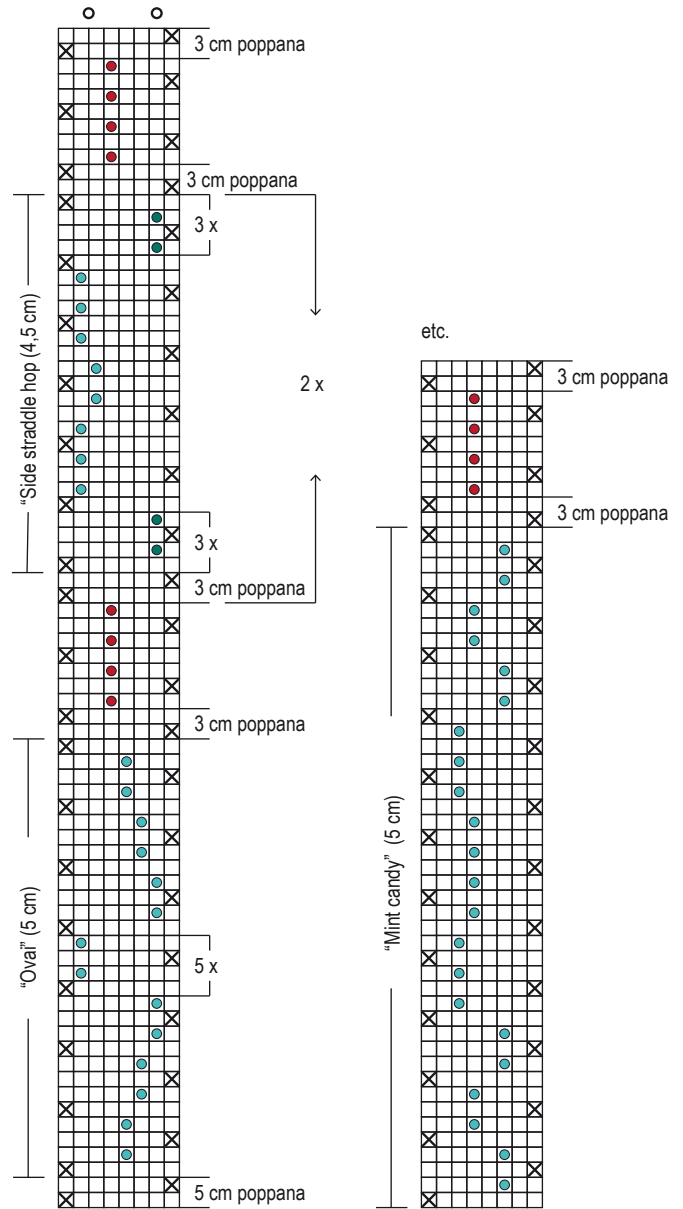
Red dot

Oval = The middle

Weave the other end as a mirror image ●

Treadling:

- = mint green velvet yarn
- = petrol green velvet yarn
- = blum red velvet yran
- × = poppana (bias-cut cotton strip)



14 x 12 = 168 threads + 4 (2 outmost warp ends are coubled)