

Hortensia 3789

www.mallikerta.fi

© mallikerta



www.mallikerta.fi

© *mallikerta*

Finished size 40 x 121 cm

Hortensia 3789

The warp 6-ply Liina Cotton Twine, tex 30x6,
1 kg = n. 5 300 m
Warp width 42 cm
the sett 4 ends/cm
number of warp ends 168 + 4
length 10 m
amount of warp yarn needed 325 g

Reed 1 per dent in a 40-dent reed (metric)
Structue 6-shaft rose path, tabby, and clasped weft

AMOUNT OF WEFT YARN NEEDED

Poppana cotton strip, width 10 mm, Poppanavakka / Lankava
5206 rose 300 g

Velvet yarn, tex 555, 1 kg = n. 1 840 m, Garnhuset i Kinna

209 light rose 37 g

245 lilac 39 g

296 dark lilac 41 g

213 burgundy red 48 g

Hems: Cotton yarn 8/2, tex 74x2, 1 kg = n. 6 800 m,

Garnhuset i Kinna

8213 burgundy red 11 g

WEAVING INSTRUCTIONS

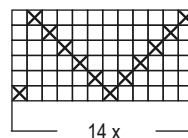
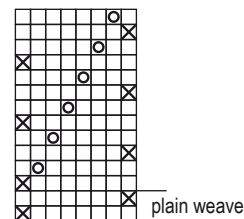
Weave 3 cm with double burgundy cotton yarn 8/2 for the hem. According to the treadling instructions, weave the table runner the poppana cotton strip as tabby background weft and the velvet yarn as pattern weft.

Weave the pattern in two colors with clasped weft technique. Throw the weft into the shed and twist the weft of another color on other side. Drag the weft of another color into the shed so far that the color change point is where you want it. Beat wefts in. See page 36 for instructions.



Treadling instructions for Hortensia table runner are on page 36.

The warp ends at edges must be in heddles. You cannot weave with clasped weft technique if you have floating selvages.



14 x 12 = 168 threads

FINISHING

Sew a 3-step zigzag on the ends. Turn the warp threads to the reverse side over the cotton border and sew one or two straight stitch over the warp threads. Shorten the fringes. Sew the hem with invisible stitches by hand. Steam or press lightly. ▶

COLOURS OF ROWS OF FLOWERS

1st row of flowers: On the left side of the cloth there are 5 one-coloured flowers, in the middle of the cloth there are 3 two-coloured flowers and on the right side there are 5 one-coloured flowers. In the two-coloured flowers in the middle of the cloth, weave the lowest and top petals of the flower in a lighter color and the middle petals in a darker color.

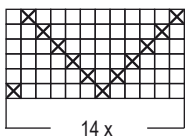
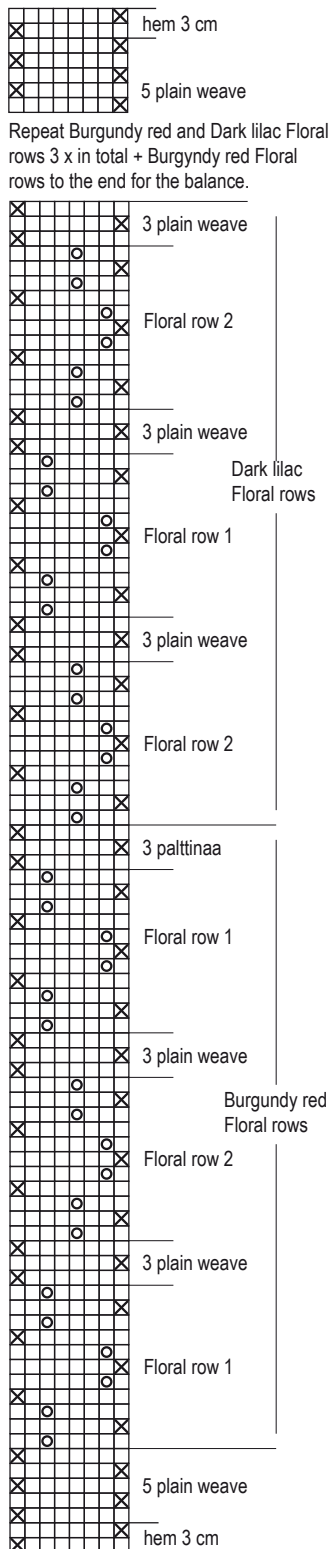
2nd row of flowers: There are 5 one-coloured flowers on the left side, 4 two-coloured flowers in the middle and 5 one-coloured flowers on the right. Weave the two-colored flowers in the middle as above. - Between each row of flowers there are 3 plain weave throws with poppana cotton strip.

COLOUR ARRANGEMENT

lilac 245 + burgundy 213 (row of flowers 1)
 burgundy + light rose 209 (row of flowers 2)
 lilac + burgundy (row of flowers 1)
 dark lilac 296 + lilac (flower row 2)
 light rose + dark lilac (row of flowers 1)
 dark lilac + lilac (flower row 2)
 Repeat 3 x from the beginning (altogether)

lilac 245 + burgundy 213 (row of flowers 1)
 burgundy + light rose 209 (row of flowers 2)
 lilac + burgundy (row of flowers 1)

The woven length is 125 cm + the hems á 3 cm. The size of the fabric off the loom is 40 x 127 cm. ●



14 x 12 = 168 threads

