

Price €10,30 incl. VAT

mallikerta

The Weaver's Pick

A magazine full of ideas for weavers ~~~~~ SUMMER 2 | 2022

LINEN

*Weave and crochet fabric into
a summer blouse*

16

COLOUR WITH CLASPED WEFT TECHNIQUE

*Capture motifs on pillows,
rugs, and placemats*

22 - 36



The Weaver's Pick

A magazine full of ideas for weavers

In this issue



Weave and crochet

14

You can weave the fabric in looms, and in addition, knit and crochet parts of the garment of the same yarn.

Maximum Linen

” 8

The bold plant pot covers are woven of a thick linen cord ”



Clasped weft flowers

30

”Weave two-coloured flower rows quickly and easily with clasped weft technique.

”

Got out of hand again

Many of the patterns in this issue are woven with *clasped weft technique* because we couldn't wait to try the next new idea. First there were clasped weft rugs, then came the idea of poppana table runners with clasped weft. While we were weaving table runners, the idea started to live on from the velvet pillows with clasped weft motifs.

Another technique we could have used to weave a lot of things is *double weave*. The small plant pot covers woven on the table looms were not enough for us, so we moved on to a larger loom and wove more pot covers from a thick linen yarn. The idea was to also weave doormats with double weave structure, that proved to be a more time-consuming project.

For clasped weft table runners, we chose a well-known violet overshot pattern to celebrate the summer but also try other motifs.

There's a suggestion for a wave-patterned table runner. The structure is 6-saft rose bath overshot, but the 4-saft rose bath is just as good, and other overshot drafts.

Linen is an all-time favorite of weavers. Weave a linen fabric into a summer blouse and crochet sleeves or any other part of the blouse with the same thread. A blanket can also be woven from linen!

Woven from thick linen yarn with a lace weave structure, the blanket looks stunning. The linen blanket is also ideal for summer use on the terrace or balcony.

Tips for recycling old weavings are always welcome. - Wrap the rug as a pillow. From a regular rag rug, you can get a smaller triangle pillow and a large floor cushion that you can lie on top of. Have a relaxed summer and beautiful weavings. - *Marjatta*

SUMMER 2/2022



TRIANGULAR CUSHION AND TUBE CUSHION 6

Turn an old rug into a cushions.

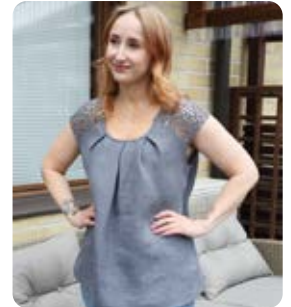


CORDS 3782 8

We wove the large plant pot cover, and the small pot covers into the same linen cord warp.

FLOURISH PLANT POT COVER 3783 12

Weave a pot cover on table looms.



WEAVE AND CROCHET 3784 14

Linen summer blouse has crocheted sleeves!

LINEN THROW 3785 18

Weave an elegant blanket of linen yarn.

MIST 3786 22

Chenille yarn shimmer in a misty clasped weft pattern.

SPINNING TOP RUG 3787 26

The rug with clasped weft figure.

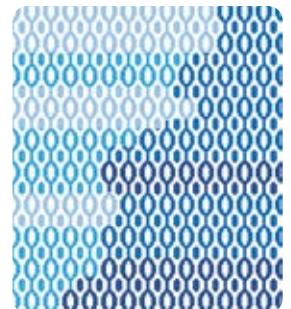


ROWS OF VIOLAS 3788 30

Poppana placemats are suitable for summer setting.

HORTENSIA 3789 34

Weave a whole flower garden into a table runner.



EDITOR-IN-CHIEF
PATTERN EDITING
PUBLISHER

Marjatta Hirvi
Marjatta Hirvi, Kirsi Vakkari
Mallikerta MH

CONTACT INFORMATION

Mallikerta MH
Vanhamaantie 3-5 A6, 47200 ELIMÄKI,
FINLAND
toimitus@mallikerta.fi

CUSTOMER SERVICE

www.mallikerta.fi
Tel. +358 40 170 2007

PRINTING HOUSE

Lehtisepät Oy, Lahti

The Weaver's Pick magazine is published four times a year. Past issues are available from the publisher. The magazine accepts no responsibility for any typographical errors or other inaccuracies in the content that may cause our readers inconvenience, loss of working time or financial damage. The commercial use of the weaving patterns and the sharing of designs online is forbidden.



41th volume 2022
ISSN 0782-1530





Recycle and weave ideas for your summer patio

SEW A FLOOR CUSHION FROM A RAG RUG

Utilize old carpets and the rests of the warp. You can weave the too short end of the warp for a decent rug into a pillowcase. Weave a freshly striped fabric at the end of the warp with the cut rag strips. Weave narrow stripes to which you can use the scraps. Sew the rug into a tube and add a cap fabric to the ends. You get a nice tube cushion that is also suitable for children's play.

Easy and fast recycling: Fold and sew a triangle cushion from an old rag rug!

SLIP THE FLOWERS INTO LINEN PLANT POT COVERS

The bold plant pot covers are woven of a thick linen cord. You can weave smaller and larger pot covers into the same double weave fabric. The small pot covers are entirely tubular fabric, and the bottom is also woven into the same warp. In a large plant pot cover, channels have been woven into the fabric for strings. The loops of strings decorate the edge and close the bottom. The strings are inserted already while weaving.

You can also use the plant pot cover as a basket. ▶





Turn an old rug into a pillow



A Triangular cushion

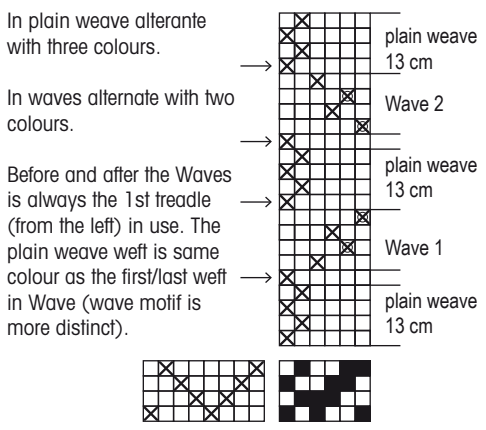
INSTRUCTIONS FOR SEWING

Use a needle to pick up the weft loops alternately from both edges. If the edges are weak or worn out, also bring warp threads to the sewing.

1. seam: Fold the ends of the rug against each other. Sew the edges of the rug together from the one side. In the photo, the arrow indicates a sewn seam.
2. seam: Sew the ends of the rug together.
3. seam: Fold the open edge of the rug again so that the seam of the ends of the rug is in the middle. Sew the open edge shut halfway. Put the filling inside and sew the rest of the edge shut.

The best way to fold a triangle from a rug is when it is about 2 x width. You can shape the cushion with the filling. We filled the cushion with several small pillows and wadding boards. The size of the Ripple rag rug in the pictures is 68 x 139 cm. The size of the cushion is 68 x 69 x 76 cm. ●

DRAFT for the Ripple rag rug





A Large tube cushion

MATERIALS

A rag rug 75 x 86 cm

Plastic foam (camping mat) 86 x 71,5 cm

Upholstery foam blocks 86 cm long

Fabric for the end caps 2 pcs 20 x 77 cm

Fabric for finishing the borders 2 pcs 10 x 79 cm

INSTRUCTIONS FOR SEWING

Tie the warp threads. Turn warp threads to the reverse side and machine sew approx. 2 cm from the edge. Shorten the fringes.

Sew the long sides of the rug by hand with 6-ply Cotton twine.

Sew a tube of plastic foam that fits inside a tube sewn from the rug. Fill the tube with upholstery foam pieces.

Sew together the short sides of the end cap fabric. Sew a channel on one side for the string. The inside allowance of the channel is 1 cm, and the width is 2 cm. Insert the end cap fabric inside the rug with the reverse sides facing each other and sew together. Place the board fabric on the reverse side of the end cap with the edges facing each other and sew 2 cm from the edge. Turn the board to the right side and sew by hand on the right side. The height of the board ready is 2.5 cm. Thread the string in the channel. Make the other end the same way.

Slip the rug over the plastic foam tube and draw the strings to close the ends. The length of the tube cushion is 86 cm, and the diameter is 25 cm. ●



Weave a light rag rug at the end of the warp and sew a large tube cushion out of it. You can also sew the cushion from the old rug. If the carpet is long, unravel the extra length and re-tie the warp threads. The 75 cm wide rug provides a cushion with a diameter of 25 cm. The length of the carpet becomes the length of the pillow.

Tip

Paint more figures on the rug with textile colours.





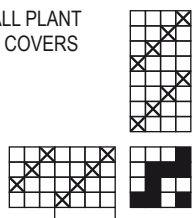
Linen plant pot covers or baskets

Cords 3782

The warp Linen twine, tex 2x1250, 1 kg = approx. 410 m,
 Filona, color grey no 8
 Warp width 27 cm
 the sett 4 ends/cm
 number of warp ends 107
 length 2,9 m
 amount of warp yarn needed 673 g (= 232 g/m)

Reed 2 per dent in a 20-dent reed (metric)
 Structure Tubular doubleweave

SMALL PLANT
 POT COVERS



26 x

3 104 = 107 threads



Small pot covers / baskets

Height 16 cm, Ø 17 cm (inner Ø 15 cm)

WEAVING INSTRUCTIONS

Weave tubular doubleweave according to the treading instructions. Start and finish by weaving 1 cm with extra weft. Also shoot some extra wefts to the ends of the bottom fabric. The extra length helps finishing, as the fabric unravel easily. The sett is 3 picks/cm and 2 picks/cm at hems in one layer of the fabric. The width of the fabric off the loom was 26 cm.

Weave:

- 6 cm for the hem with Veera linen yarn, unbleached
- 20 cm for side with Linen twine, grey
- 6 cm for the hem with Veera Linen Yarn, unbleached
- 26 cm for the base with Veera Linen Yarn, unbleached

AMOUNT OF WEFT YARN NEEDED

Linen twine, tex 2x1250, 1 kg = n. 410 m, Filona no 8 grey, another basket no 2 unbleached 55 g
 Veera linen yarn, tex 240x2, 1 kg = n. 950 m, Filona no 2 unbleached 50 g



Sewing the small baskets

Sew a 3-step zigzag to the ends of the bottom fabric and side fabric. Cut the bottom fabric and side fabric apart. Use the reverse side of the side fabric as the right side, as the sharp edge of the edge is smoother at the reverse side.

Cut the bottom fabric open from one side. Cut a round piece of plastic foam with a diameter of 0,5 cm smaller than the side fabric. The cut piece here is 15,5 cm and the diameter of the fabric is 16 cm. Use the piece to draw 2 circles on the bottom fabric. Add approx. 3.5 cm of seam allowance to the edges of one circle and approx. 3 cm of seam allowance to the other.

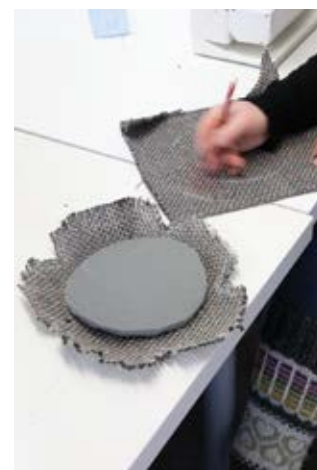
Sew a straight stitch on the edge of the piece and cut off. Draw 5 notches evenly at the edges of the circle and sew a straight stitch on their edges. Cut the triangles out of the notches.

Place the larger fabric under the plastic foam base piece and turn the edges of the fabric over the piece. Sew the edges by hand so that the fabric bends evenly around the base piece. There's an open spot in the middle.

Fold the seam allowance of the second piece of the fabric to the reverse side. Sew the fabric on the open side of the base piece from the edges.

Turn hems completely to the inside and sew by hand. The height of the hem ready is 3,5 cm. Sew with a strong multi-ply linen yarn (for example Line linen 16/2) or double sewing thread in the colour of the fabric.

Sew the side fabric onto the base piece. Sew so that the base piece remains completely visible below the side. Finally, turn the hem to the right side. ▶





Large plant pot cover

Height 26 cm, Ø 22 cm (inner Ø 21 cm)

AMOUNT OF WEFT YARN NEEDED

Linen twine, tex 2x1250, 1 kg = n. 410 m, Filona
no 8 grey 150 g

Veera linen yarn, tex 240x2, 1 kg = n. 950 m, Filona
for inside allowance, no 2 unbleached 10 g
+ for the string approx. 30 g (final string 7 m)

WEAVING INSTRUCTIONS

Weave tube with a channel every 5 cm for strings. Two tabby throws close the tube fabric to form a channel. The channel section is woven with two shuttles to leave open both edges. The strings are threaded into the channel during weaving. See the treadling instructions. The width of the fabric is the height of the pot cover, and the woven length of the fabric is the circumference of the pot.

Make twisted cord of Veera linen yarn before you start weaving. You need a ready-made string approx. 7 meters. Make more than one cord and the processing will be easier. You can join them when weaving and finishing. Twisted cord: Take two threads and twist them from the ends in different directions into a tight swirl. Hold the string from the middle, tie the ends together and release the other end. Smooth the twisted thread.

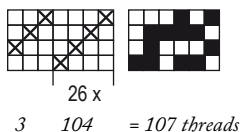
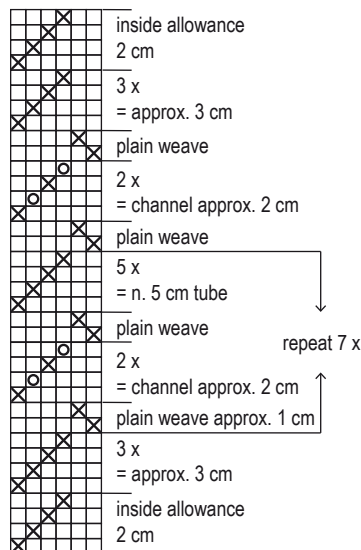
N.B! Weave about 6 cm extra length at the beginning and end of the fabric. The shut channel section prevents the tube fabric from opening, which means that the edge of the fabric cannot be finished with a zigzag stitch. The extra part increases the space so that the fabric opens enough, and the sewing is successful.

We weave the large pot cover, and the small pot covers on the previous double page into the same warp. Large pot cover needs plain weave to form tubes for strings. Small covers are just one continuing tube woven without plain weave.

LARGE PLANT POT COVER Cords

Weave with two shuttles:

× = shuttle 1
○ = shuttle 2



WEAVE

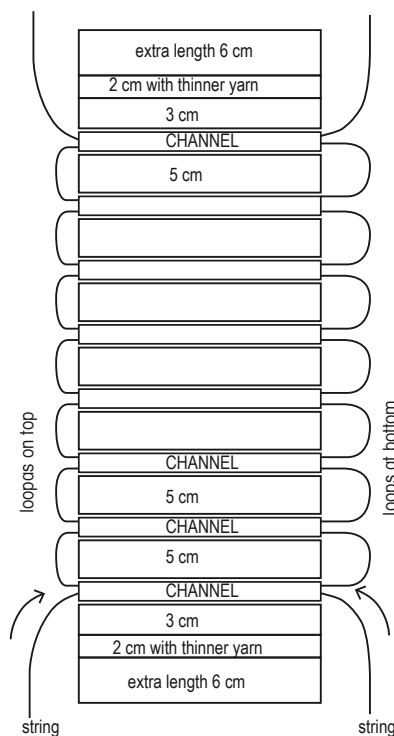
- 6 cm extra length for finishing
- 2 cm tube with Veera linen yarn for inside allowance
- 3 cm tube with gray Linen twine
- Channel *) = approx. 4 cm with tabby shots
- 5 cm tube
- Weave by alternating the channel and the tube a total of 7 times and add 1 channel to the end for the balance.
- 3 cm tube
- 2 cm tube with Veera linen yarn for inside allowance
- 6 cm extra length for finishing
- The woven length is 73 cm + extra lengths

*) Channel: Shoot two plain weave throws, which close the tube fabric. Weave the channel section with two shuttles to keep both sides open. Place the cords in the finished channel and shoot two plain weave throws that close the channel. Leave arches about 3,5 cm high on one side and about 10 cm high on the other side. The higher arches are tied to the bottom of the pot cover and the shorter ones remain at the top edge for decoration. See the picture on the right. In finishing, the cords are adjusted to the right length and the strings are knotted together so that the knots remain inside the channels.

FINISHING

Sew a 3-step zigzag to the ends of the fabric. At the ends of the fabric, fold the inner allowance inside the tube. Sew the ends together so you can get a circle. Position the cord so that small arches remain evenly on the top edge and enough at the bottom edge to connect the arches to the middle of the bottom. At the bottom, thread the double Veera linen twine through the arches and tighten into the middle and tie into a ring. There's a little whole in the middle. - Figure 1. Thread the ends of the linen twine along the cords inside the channels. - Figure 2. Sew a bottom piece of linen fabric. The bottom is filled with a plastic foam. - Figure 3. ●

PS. You can thread the cord into the channels afterwards with a long hook. However, it is easier to put the cords in the channels already during the weaving.



1.



2.



3.



Height 14 cm, Ø 14 cm (inner Ø 13 cm)

Flourish plant pot cover 3783

The warp 6-ply Cotton Twine "Liina", tex 30x6,
1 kg = approx. 5 300 m, black

Warp width 24 cm
the sett 8 lankaa/cm
number of warp ends 192 (we used ends doubled = 384 threads)
length 2,75 m
amount of warp yarn needed 200 g

Reed 2 per dent in a 40-dent reed (metric)
(2 doubled ends = 4 threads per dent)

Structure Tubular doubleweave



The fabric is woven with soft cotton yarn and thin paper yarn. The stiff paper yarn shapes the fabric in pleats.

**WEAVE ON
A TABLE LOOM!**



AMOUNT OF WEFT YARN NEEDED

Bottom fabric

Cotton 8/2 (doubled) 1 kg = 6800 m, black 27 g

Side fabric

Cotton 8/2, 1 kg = 6800 m, black 5 g

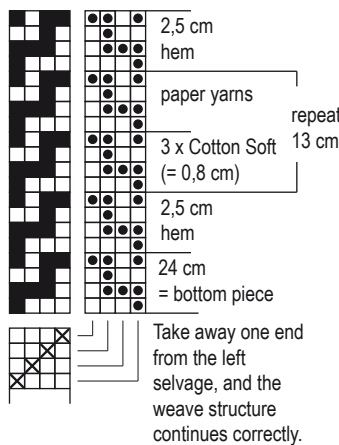
Novita Cotton Soft, 50 g = 120 m, light gray 14 g

Thin paper yarn, 100 g = 180 m, Filona, khaki 7 g

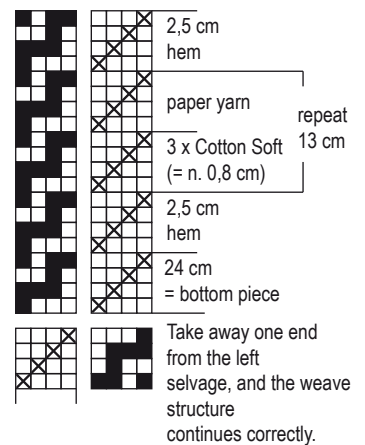
WEAVING INSTRUCTIONS

Weave 24 cm for the bottom with doubled black cotton yarn. The sett is 7 picks/cm in one layer of the fabric. Weave 2.5 cm for the hem with (single) black cotton yarn at the top and end of the side fabric. Weave the side fabric 13 cm high by alternately shooting 12 throws of Cotton Soft yarn and 4 throws of paper yarn. ▶

TABLE LOOMS



FLOOR LOOMS



FINISHING

Edge

1. Sew a 3-step zigzag at the ends of the bottom fabric and side fabric. Cut the bottom fabric and side fabric apart.
2. Sew the lower hem of the side fabric. The finished height of the hem is approx. 1 cm. Sew the upper hem of the side fabric completely inside by hand.

Bottom

Cut for the bottom a round piece with a diameter of 14 cm (the same as the diameter of the side fabric) from the plastic foam.

3. Cut the bottom fabric from one side and spread.

4a. and 4b. Draw two circles on the fabric using the plastic foam piece. Add approx. 1.5 cm of seam allowance to the edge of one circle and approx. 3.5 cm to the edge of the other circle. The diameter of one piece is 17 cm and the other 21 cm. Sew a 3-step zigzag stitch on the edge of the pieces and cut them off the fabric.

5. Place the larger fabric piece under the plastic foam bottom piece and turn the edges of the fabric on top. Sew the edges by hand so that the fabric bends evenly around the bottom piece. There is an open spot in the middle.

6. Place a smaller piece of fabric on top of the bottom piece, on the open spot. Fold the inside allowance between the fabrics and sew the edges. You have now the bottom piece ready.

7. Sew the side fabric onto the bottom piece. Sew so that the base piece remains completely below the side of the pot cover, do not push it inside.



4 a.



4 b.



5.



6.



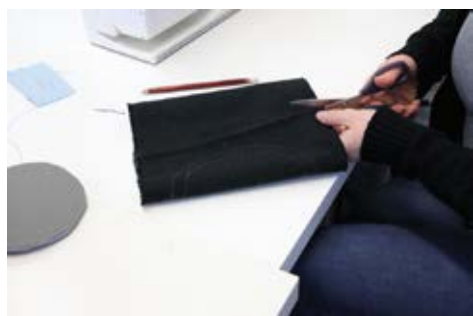
7.



1.



2.



3.



DESIGN OF PATTERN **Marjatta Hirvi** WEAVER **Kirsi Vakkari***Linen fabric for clothing*

Weave and crochet

3784

The handwoven fabric brings with it opportunities that you will not be able to fulfill with industrial manufactured fabric.

You can weave the fabric in looms, and in addition, knit and crochet parts of the garment with the same yarns. For this summer blouse, we wove the fabric for the front and back pieces and crocheted the sleeves from the same thread. In addition, we finished the hem and neckline with a crocheted ribbon.

Also play with pattern motifs! For example, place different motifs on the sleeve and hem. In this blouse, the dotted pattern is clear and complete near the hemline but becomes less dense as you go up from the hem. In addition, you can use colors creatively. For example, weave fabric of a different color into the hem or pockets.

The warp Line linen 16/2, tex 103x2, 1 kg = n. 4900 m,
Filona, color 19 blue-gray
Warp width 81,5 cm
the sett 8 ends/cm
number of warp ends 652
length 2,70 m
amount of warp yarn needed 360 g

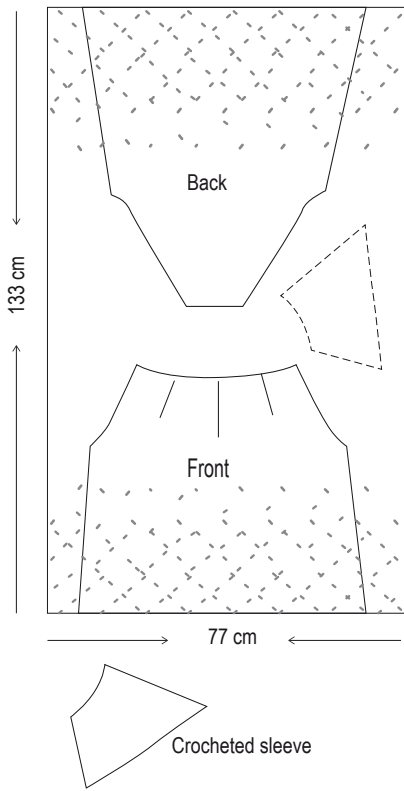
Reed 2 per dent in a 40-dent reed (metric)
Structure Plain weave, Spot weave

Wind the warp of plied linen yarn with only one end at a time to a warping mill so the warp threads don't twist together.

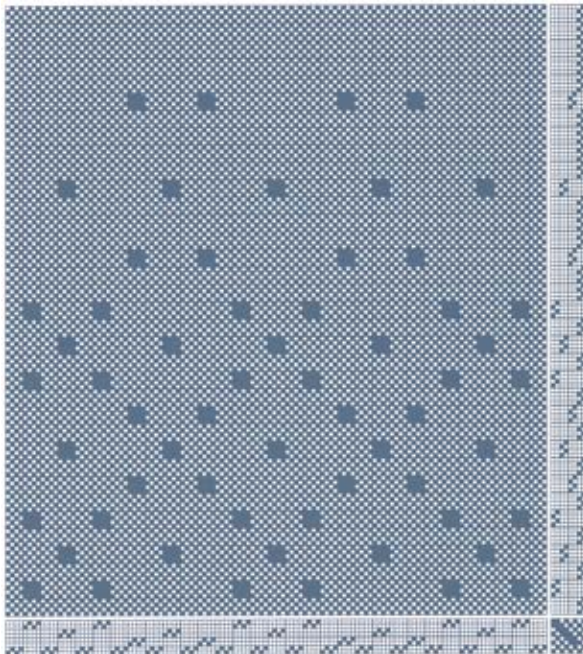
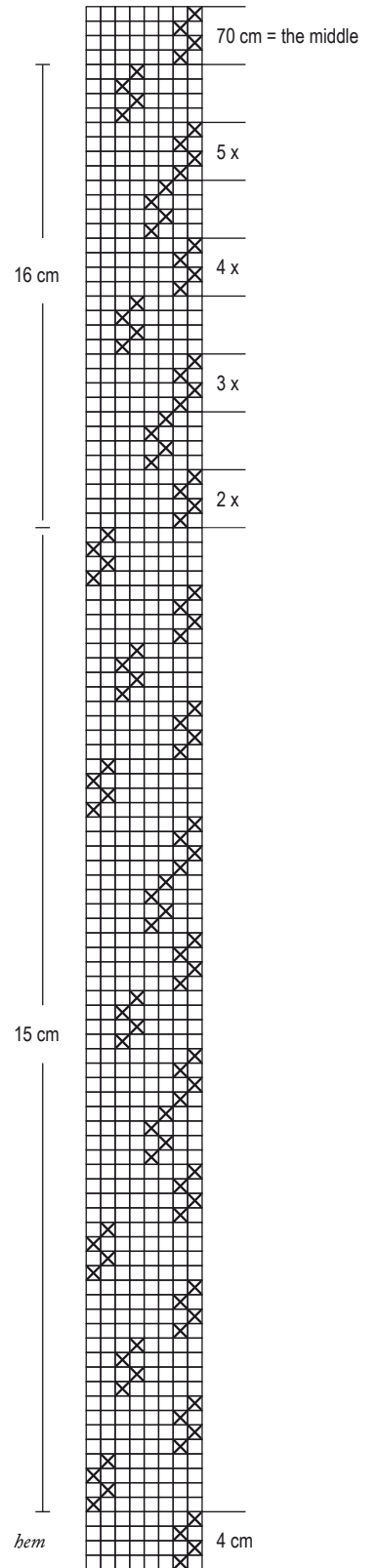
AMOUNT OF WEFT YARN NEEDED

Line linen 16/2, tex 103x2, 1 kg = approx. 4900 m,
Filona, Lappajärven värjäämö Oy
colour 19 blue-gray 120 g ▶

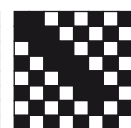
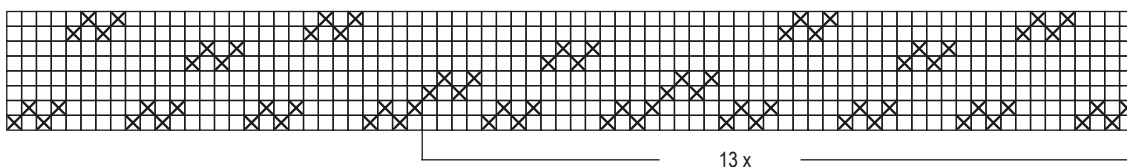




Weave the other end as a mirror image.



If the edges of the fabric are not visible on the garment, you can continue the weft yarn by leaving the ends of the threads hanging over the selvages. If you want to join the wefts at work, do it only near the edges and thin the ends of the yarns carefully.



Linen fabric for summer blouse

Make your own or find your favorite blouse design and draw the sewing patterns. Calculate the required warp width and length and remember to add the shrinkage of the fabric in the calculations. It is generally better to have a little too much fabric than too little. This fabric shrank by 5% in length and width. The width of this warp is sufficient for a blouse of approx. 38-40 European sizes / 10-12 UK sizes / 6-8 USA sizes. Increase the width by increasing the number of the repeats in the threading. Each repeat is 48 yarns = 6 cm.

WEAVING INSTRUCTIONS

Weave 140 cm according to the treadling instructions. The patterned structure is placed on the hemlines. The fabric has been measured slightly loosely. The sett is 5,5 picks/cm. The fabric size woven was 81 x 138 cm and off the loom 77 x 133 cm.

FINISHING

Sew a 3-step zigzag at the ends of the fabric. Wash by hand in warm water, gentle soap. Lay flat until nearly dry. Press or steam the fabric through an ironing cloth. Sew a 3-step zigzag stitch on the edges of the pieces before cutting off. Sew pleats and side seams. Turn 0.5 cm to the reverse side at the neck opening on the back piece and sew by hand. Turn 0.5 cm to the reverse side at the sleeve position on the back and front piece and sew by hand.

CROCHETING

Crochet the sleeve pieces from the same thread from which the fabric is woven. Crochet lace ribbons of the neckline and hem from the same thread. - Crochet hook No 2.

Use a simple checkerboard stitch pattern with chain stitches and double crochets. Fill empty boxes randomly with double crochets. Start at the sleeve end. Crochet the number of chain stitches required for the sleeve end width.

Round 1: *4 double crochets, 2 chain stitch, skip 2 stitches (= blank box) * Repeat * - * Round 2 and forward: Crochet blank boxes and filled 4 double crochet boxes in a random order. Decrease at the edges according to the sleeve pattern. Finally, make single crochet stitches on the neckline. Crochet a ribbon for the hem and neckline with shell stitches. Make two rounds of shells. The neckline has lace ribbon only on the edge of the front piece. Crochet the lace of the hem in two parts, making it easier to adjust the length.

Sew the sleeves closed with short, invisible stitches. The woven fabric is left on top of the crocheted fabric. Fold the edges of the crochet lace ribbon against each other. Place the fabric between the folded ribbon. Pin and baste. Sew the ribbon by hand first on the right side and then on the reverse side. Iron the seams open on the reverse side. Lightly iron the pleats on the neckline.

N.B! Always iron the linen fabric through an ironing cloth. Direct contact with a hot iron can burn the surface of the linen fabric brown. ●





DESIGN OF PATTERN Marjatta Hirvi WEAVER Kirsi Vakkari

Finished size 101 x 178 cm

Linen Throw 3785

The warp Veera linen yarn, tex 240x4, 1 kg = n. 950 m

Warp width 121,5 cm
the sett 2,92 ends/cm
number of warp ends 355
length 2,75 m

Reed 1 per dent in a 35-dent reed (metric), except every 6th dent is empty

Structure Lace weave

INSTRUCTIONS FO WINDING THE WARP

Wind one end at a time.

5 ends unbleached	} repeat 35 x
5 ends light gray	
5 ends unbleached	
355 ends in totat	

AMOUNT OF YARN NEEDED

Veera linen yarn, tex 240x4, 1 kg = n. 950 m, Filona, Lappajärven Värjäämö

	Warp	Weft	
unbleached	452 g	527 g	= 979 g in total
light gray	375 g	51 g	= 426 g in total

Spreading into the raddle (radde with 1 cm dents)

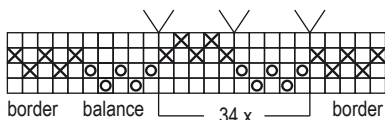
3 ends in one dent, 2 ends in every 10th dent ▶



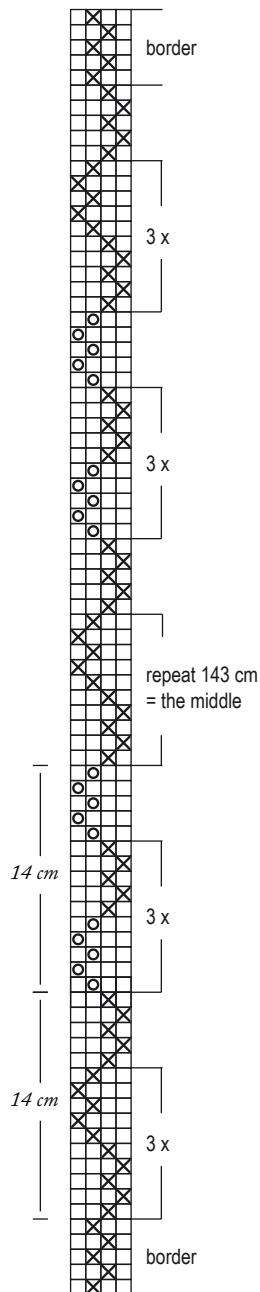


Leave an empty dent between groups of five ends in the reed to make the pattern clearer.

- × = unbleached
- = light gray
- ∨ = empty dent in reed



5 5 34 x 10 = 340 5 355 threads in total



WEAVING INSTRUCTIONS

Weave 1.5 cm of plain weave (= edge) at the beginning and end of the throw. Weave the throw according to the treadling instructions with unbleached Veera linen yarn. At the ends of the throw there are light gray stripes. The density of the weft is 3 threads per 1 cm. When continuing the weft yarn, thin the ends of the yarns and twist the ends around each other. Pay attention to weft throws. If the weft is drawn in too high arcs, the thread twists out from the fabric. If the arcs are too small, the fabric narrows.

The woven length is 203 cm. The size off the loom was 116.5 x 196 cm and after wet-finishing 101 x 178 cm.

FINISHING

Tie the overhand knots according to the warp stripes, i.e. 5 threads per one overhand knot. Even the fringes equally long after wet-finishing. Wash the throw by hand. Use a liquide washing detergent with no bleach and rinse with plenty of water. Dry flat. For example: Spread the towel on the drying rack and place the throw on top of it to dry. Press the throw through an ironing cloth while it is still slightly damp. ●



EVEN THE WARP WITH A STICK

Before weaving, press the shaft or a heavy warp stick under the warp ends before weaving. Hold the stick in place throughout the weaving process to keep the warp tight and even. If the warp is long, confirm the warp particularly well with warp sticks. The more sticks, the better.

**THE MOTIFS OF THE LACE WEAVE
ARE HIDDEN AT FIRST**

Fabrics with warp and weft threads binding tightly and sparsely in some places are not at their best immediately after taking off the looms. It is only after wet-finishing that the beautiful pattern motifs become properly visible.



Fabric taken off the looms.



Fabric after wet-finishing.





DESIGN OF PATTERN **Marjatta Hirvi** WEAVER **Kirsi Vakkari***Velvet cushions**Finished size 60 x 58 cm, 2 kpl*

Mist 3786

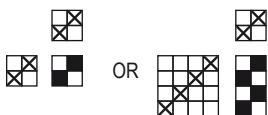
The warp 9-ply Liina Cotton Twine, tex 30x9,
1 kg = n. 3 480 m

Warp width 70 cm
the sett 4 ends/cm
number of warp ends 280 + 4
length 3,73 m
amount of warp yarn needed 300 g

Reed 1 per dent in a 40-dent reed (metric)

Structure Plain weave

Kude Selina Chenille yarn, tex 750,
1 kg = n. 1 300 m, Lankava



The pillows are just as velvety soft as they look! The fabric is easy and fast to weave, and the result is stylish and durable. Warp is a 9-ply cotton twine that is exactly right weight, thin but still firm for chenille yarn wefts. The stripes are woven with clasped weft technique, so the weft thread is always doubled in the shed.

Leave a little room in the pillow while filling it and the velvety surface bends beautifully and the shimmering surface becomes well visible. ▶



WEAVE CLASPED WEFT

Throw a gray weft from the right edge. Go around a black weft with the gray weft and throw the shuttle back to the same shed. Drag the color change point of the wefts to where you want the black stripe to end. Beat the wefts into place. Weave the stripes to the height of two throws, i.e., drag the color change point to the same place as the previous time. Weave between the stripes only the black edges, i.e., make the changing point of the colours from the edge as far as fifteen warp ends (3,75 cm) distance.



Cushion 1 ***black stripes***

AMOUNT OF WEFT YARN NEEDED

Selina-samettilanka, tex 750, 1 kg = n. 1 300 m, Lankava

19 vaaleanharmaa 431 g

2 musta 77 g

Sisävaroihin Puuvillalanka 8/2, tex 74x2, 1 kg = n. 6 800 m

vaaleanharmaa 8 g

WEAVING INSTRUCTIONS

Leave around 3 cm for the fringe on both ends. Weave 1,3 cm with double cotton yarn 8/2 for the inside allowance. Weave the fabric with clasped weft technique using light gray and black chenille yarn. The woven length is 131 cm.

Weave on the left side a 3.75 cm wide black edge stripe over the entire length of the fabric. Mark the colour edge point 3.75 cm = 15 warp ends from the left selvage, e.g., pin the point on the fabric or knot a thread around the fifteenth warp end behind the reed. This will keep the black edge the right width. In addition to the black edge, make black two-throw-high stripes at random intervals. Make the stripes different lengths, however, so that the longest black stripe reaches no more than half the fabric.

The sett is 7 picks (double threads) at 2 cm (when weaving with clasped weft, the yarn is doubled in the shed).

The size of the fabric off the loom is 65 x 126,5 cm + inside allowance.

The size of the fabric after wet finishing is 62 x 116 cm + inside allowance. The size of the cushion ready is 60 x 58 cm.

Cushion 2 ***gray stripes***

AMOUNT OF WEFT YARN NEEDED

Selina Chenille yarn, tex 750, 1 kg = n. 1 300 m, Lankava

19 light gray 72 g

2 black 140 g

Inside allowance: Cotton yarn 8/2, tex 74x2, 1 kg = n. 6 800 m
light grey 8 g

Weave in the same way as the cushion with black stripes, but this time make a 23 cm wide black stripe on the edge. Weave two-throw high grey stripes in the black stripe at random intervals. Make the stripes different lengths but stretch the longest stripes up to 3.75 cm from the edge.

FINISHING

Cut the pillow pieces apart. Sew a 3-step zigzag to the edge of the cotton inside allowance. Turn the warp threads to the reverse side ▶

over the inside allowance and sew on the threads a straight stitch twice. Shorten the fringes. Wash the fabrics by hand in warm water, use a little detergent. Dry flat. Sew a zipper at the cotton inside allowance. Sew the side seams. ●



Up, down or across

Set the stripes on the pillows in the same direction or across. The direction of the stripes affects the look of the arrangement.



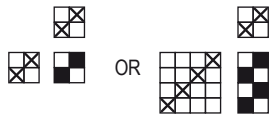


Finished size 100 x 120 cm

Spinning top 3787

The warp 15-ply Liina Cotton Twine, tex 30x15,
1 kg = n. 2020 m
Warp width 120 cm
the sett 2 lankaa/cm
number of warp ends 240 + 4
length 10 m
amount of warp yarn needed 1190 g

Reed 1 per dent in a 20-dent reed (metric)
Structure Plain weave



AMOUNT OF WEFT YARN NEEDED

Cotton tricot (T-shirt yarn), thin quality
smoky blue 815 g
Mini Tube Yarn, Lankava
turquoise 370 g
dark beige 370 g

WEAVING INSTRUCTIONS

The warp ends at the selvages must be in heddles for the clasped weft technique to be successful.

Weave at the beginning and the end 1 cm with 15-ply cotton twine as the inside allowance for the hem. Weave 7 cm for the hem by alternating the smoky blue cotton tricot, the turquoise Mini Tube yarn and the dark beige Mini Tube yarn.

Weave the rug by alternating the blue cotton tricot and clasped

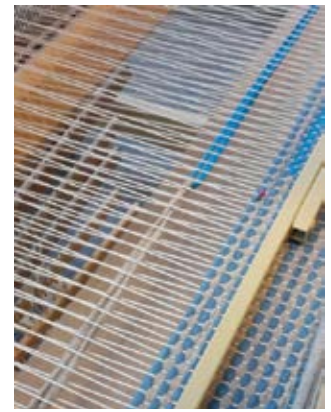


The rug has every other weft of a cotton tricot, and every other weft is a clasped Mini Tube yarn. The clasped weft technique doubles the weft in the shed. Cotton tricot is of thin quality. The pattern becomes clear when the tricot weft is approximately the same thickness as the doubled Mini Tube yarn.

Mini Tube yarns. In a two-color spinning top pattern, the changing point of different colour wefts is on the left side of the pattern each other time, and each other time on the right side of the pattern. See more instructions on the page 28. Draw and cut the first triangle at the correct size to use as a pattern sheet. As the weaving progresses, measure the position of the pattern on the rug and mark its edges with pins. Please note that the rug narrows as weaves proceed and the size of the triangle must be adjusted accordingly. The woven length is 136 cm with the hems.

FINISHING

Tie the warp threads with tight weaver's knots. Cut the warp threads about 3 cm long. Sew the hems with 6-ply cotton twine or a similar strong thread. ▶



CLASPED WEFT WEAVE

1. Use the pin to measure and mark the spot where the different colours meet.
2. Throw the turquoise weft from the right edge into the shed.
3. Twist the dark beige weft on the left side with the turquoise weft.
4. Keep the same shed open and, with turquoise weft, pull the dark beige weft into the shed so far that it reaches the spot marked with the pin. Close the shed and beat wefts in.

HOW TO WEAVE A SPINNING TOP FIGURE

Draw a triangle in 1:1 size on paper and cut out as a pattern sheet.

- Throw the smoky blue tricot weft as usual and beat in.

1. Throw the turquoise weft from the right side. With turquoise weft, pull the dark beige weft into the shed so that the colours change on the left edge of the triangle pattern.

- Throw the smoky blue tricot weft as usual and beat in.

2. Throw the turquoise weft from the right side. With turquoise weft, pull the dark beige weft into the shed so that the colours change on the right edge of the triangle pattern.

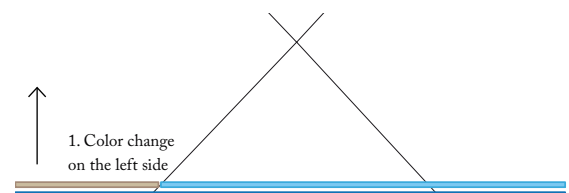
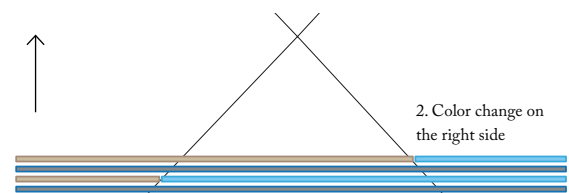
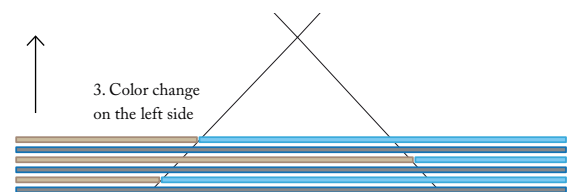
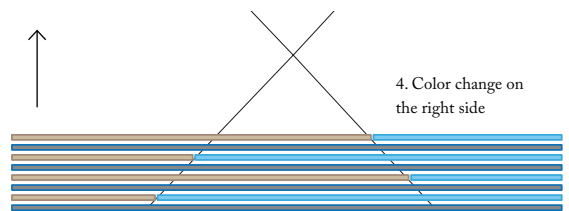
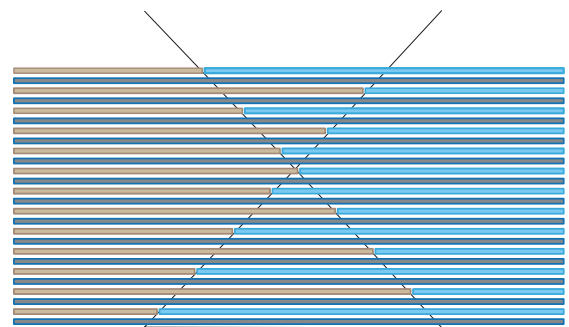
- Throw the smoky blue tricot weft as usual and beat in.

3. Throw the turquoise weft from the right side. With turquoise weft, pull the dark beige weft into the shed so that the colours change on the left edge of the triangle pattern.

- Throw the smoky blue tricot weft as usual and beat in.

4. Throw the turquoise weft from the right side. With turquoise weft, pull the dark beige weft into the shed so that the colours change on the right edge of the triangle pattern.

Continue in the same way, following the pattern. The right side of the rug becomes turquoise, the left side is dark beige and the triangle in the middle is turquoise and dark beige coloured. When you have finished the triangle figure, turn the sharp end of the triangle downwards and continue in the same way. Continue the triangle until it reaches the rug edges = the middle of the rug. Weave the other side of the rug into a mirror image. ▶



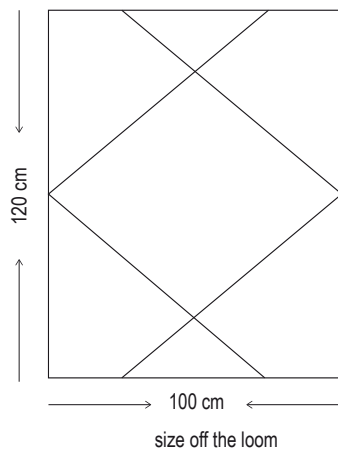
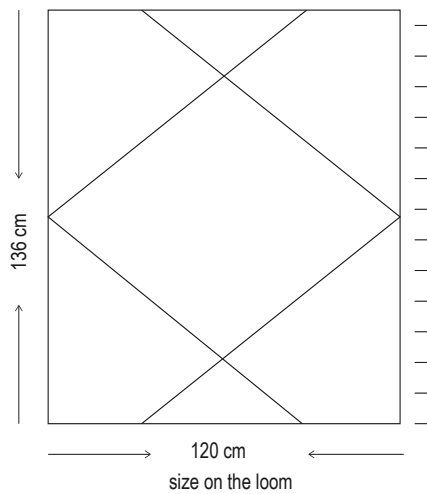
EDGES

The rug woven with clasped weft weave does not have the same braid-like selvage, which can be obtained by three shuttles to a regular rag rug. There will be a so-called "gingerbread edge" and the right edge binds differently from the left edge. It is important that you always rotate the left edge. It is important that you always rotate the wefts on the edge in the same order, so that the edge continues to look the same. Then the edge is neat and beautiful, although it is not like being drawn with a ruler. Pictures on the top right.

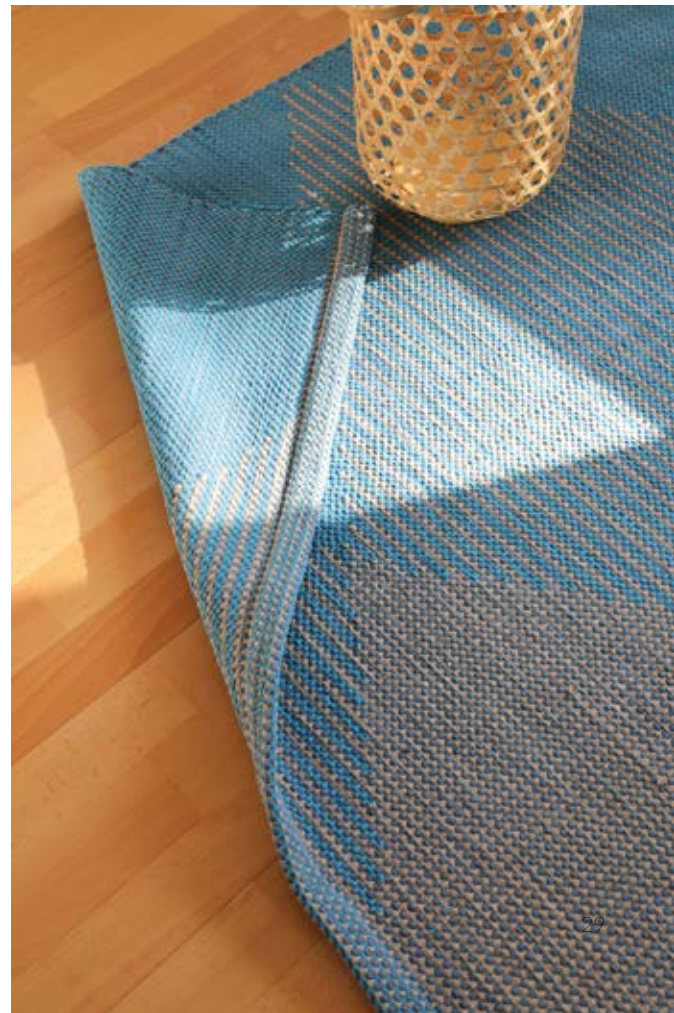


HEMS

You can weave the hems nicely into this rug! The rug alternately has a tricot weft and a double Mini tube yarn. The hem becomes a suitable thickness when you throw with three shuttles alternately the tricot weft, Mini Tube yarn and Mini Tube yarn. ●



At the beginning of the rug, the width of the triangle was approx. 60 cm. As the weaving progresses, the rug narrows, in which case the size and shape of the triangle must be corrected to fit the new width. The widest part of the spinning top figure comes halfway up the rug.





DESIGN OF PATTERN Marjatta Hirvi WEAVER Kirsi Vakkari

Sturdy poppana placemats
 Finished size 40 x 31 cm

Rows of Violas 3788

Weave two-colored flower rows quickly and easily with clasped weft technique! The tablets will be sturdy and will also be well suited for summer setting for the patio and balcony.



The warp 6-ply Liina Cotton Twine, tex 30x6,
 1 kg = n. 5 300 m

Warp width 42 cm
 the sett 4 ends/cm
 number of warp ends 168 + 4
 length 10 m
 amount of warp yarn needed 325 g

Reed 1 per dent in a 40-dent reed (metric)

Structure 6-shaft rose path, tabby, and clasped weft

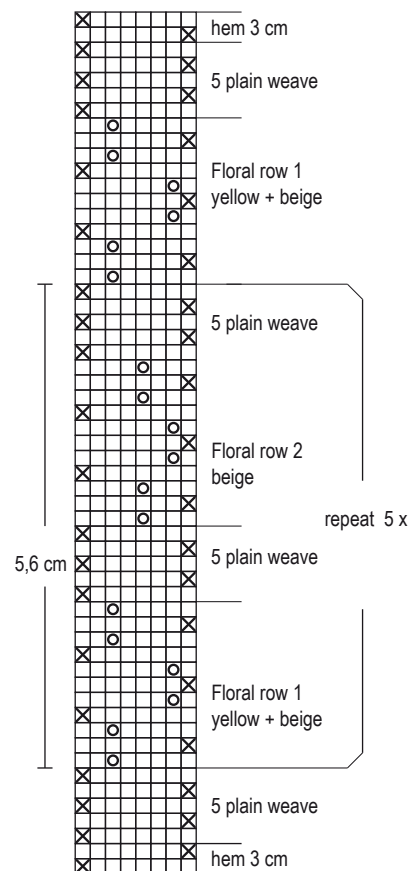
AMOUNT OF WEFT YARN NEEDED

Poppana cotton strip, width 10 mm, Poppanavakka / Lankava
 0002 natural white 302 g
 7206 golden yellow 77 g
 7201 light beige 270 g

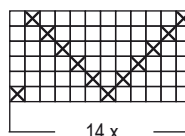
Hems: Cotton yarn 8/2, tex 74x2, 1 kg = n. 6 800 m
 natural white 31 g

WEAVING INSTRUCTIONS

The warp ends at edges must be in heddles. You cannot weave with clasped weft technique if you have floating selvages. Leave about 3 cm for the fringe on both ends. For the hem, weave 3 cm with double cotton yarn 8/2. Weave the placemats according to the treadling instructions. The background weft is a natural white poppana cotton strip and the pattern wefts are light beige and golden yellow poppana strips. ▶



Ps. You can also start with a Floral row 2. That's when you get a whole color violet on the starting edge. Now it starts with a half violet.



14 x 12 = 168 threads

Tip

Weave rows of flowers of assorted colors. Even small amounts of poppana cotton strips are enough for one flower row.



Weave every second row of flowers with light beige and golden yellow pattern weft and every other row with just light beige pattern weft as usual.

Two-colour floral rows: Throw the light beige weft into the shed from the right edge and use it to capture the golden yellow weft from the left edge. With the light beige weft, pull the yellow weft into the shed so far that the change of colours is where you want it. Close the shed and beat the wefts in. Weave golden yellow rows of flowers of varying lengths to the left.

One colour floral rows: The two-colour floral rows have double pattern weft in a shed, so weave also the one colour floral row with pattern weft doubled.

Between each row of flowers there are 5 tabby throws with natural white poppana. Leave approx. 6 cm for fringes between the placemats.

FINISHING

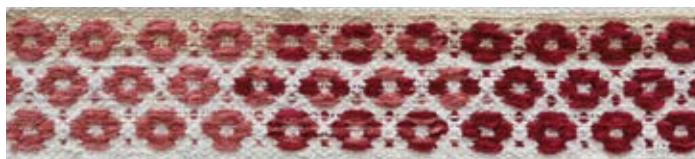
Sew a 3-step zigzag to the edge of the cotton border. Turn the warp threads to the reverse side on top of the cotton border and sew one or two dense straight stitch over the warp threads near the edge. Shorten the warp threads.

Sew the hem with invisible stitches by hand. The fringes stay neatly and firmly inside the hem. Steam or press lightly. ●

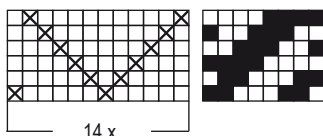
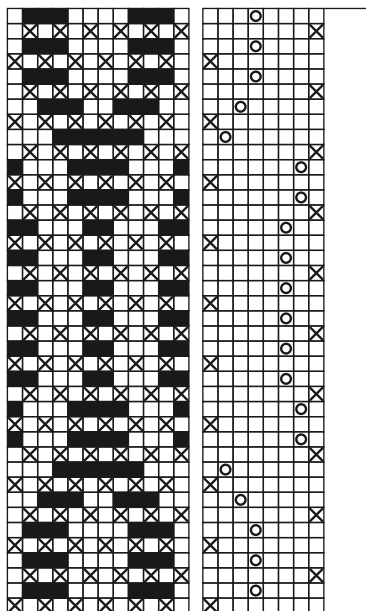
Pick up colours here for violet floral rows

The choice of colours of poppana cotton strip wefts is inspiring. Everything is allowed! Weave with peaceful muted colours or use joyful colour combinations. Everybody finds their own favorite colours.

- Weave only in different shades of green, second sample at the top.
- Add pink and pistachio green if you like brighter colours.
- Lilac is a color that is noticed. Very dark and light shades together add the effectiveness.
- In the rose-grey sample, the pattern weft is velvet yarn instead of poppana. The background weft is poppana cotton strip. Velvet yarn is of thin quality.

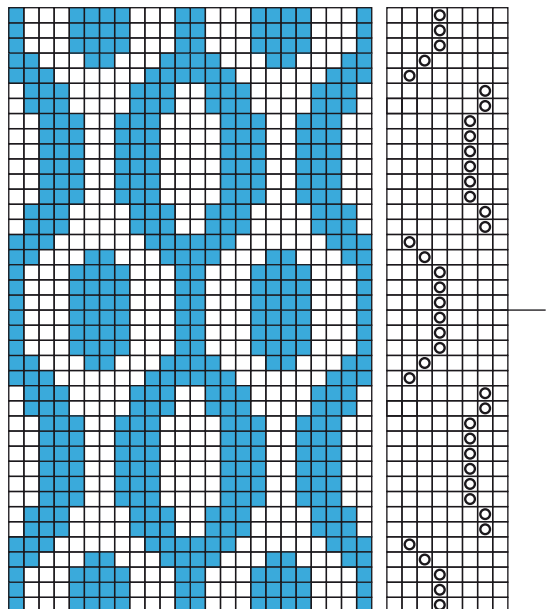
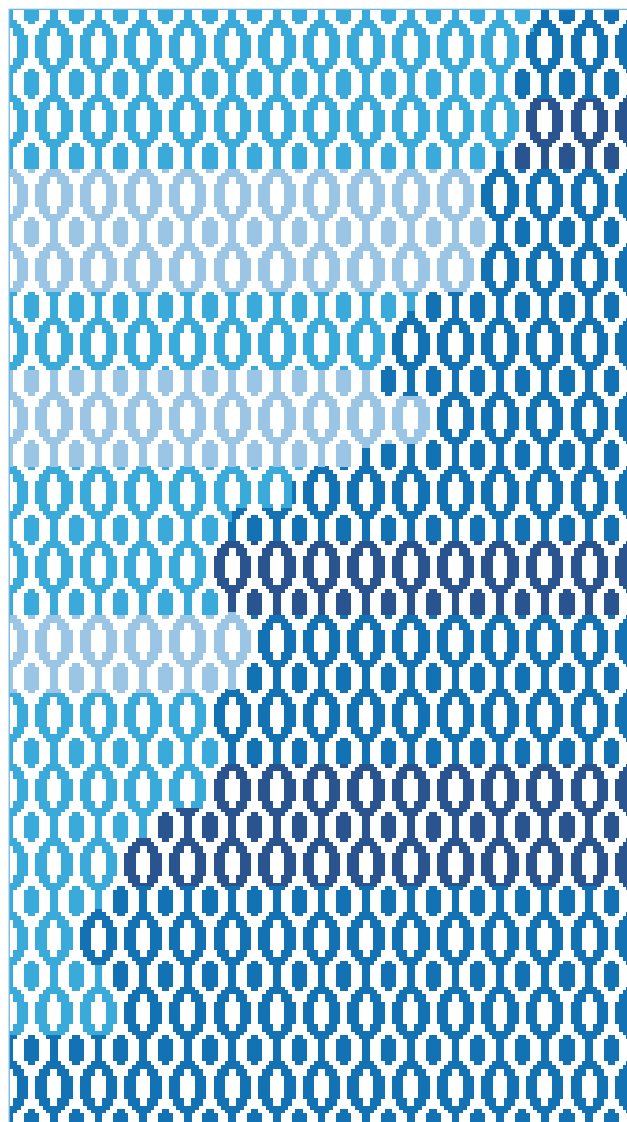


If the violets didn't catch you, weave the Waves cloth



14 x 12 = 168 threads

Weave the whole cloth with blue pattern wefts. Weave light waves on one side and dark waves on the other side. The fourth pattern-weft treadle is not in use in this treading.



In our sample above, the background weft is natural white poppana cotton strip, and the pattern weft is velvet yarn. Use a thin velvet yarn to lighten the pattern. We wove three similarly repeated pattern weft throws consecutively (pattern weft treadles 3 and 5).

The motif could be longer, so we changed the treading to six consecutive pattern weft throws that repeat in the same way. Try the appropriate number of repetitions. The thickness of the wefts also affects the height of the pattern.



DESIGN OF PATTERN **Marjatta and Kirsi** WEAVER **Kirsi Vakkari***Finished size 40 x 121 cm*

Hortensia 3789

The warp 6-ply Liina Cotton Twine, tex 30x6,
1 kg = n. 5 300 m

Warp width 42 cm
the sett 4 ends/cm
number of warp ends 168 + 4
length 10 m
amount of warp yarn needed 325 g

Reed 1 per dent in a 40-dent reed (metric)

Structue 6-shaft rose path, tabby, and clasped weft

AMOUNT OF WEFT YARN NEEDED

Poppa cotton strip, width 10 mm, Poppanavakka / Lankava
5206 rose 300 g

Velvet yarn, tex 555, 1 kg = n. 1 840 m, Garnhuset i Kinna

209 light rose 37 g

245 lilac 39 g

296 dark lilac 41 g

213 burgundy red 48 g

Hems: Cotton yarn 8/2, tex 74x2, 1 kg = n. 6 800 m,

Garnhuset i Kinna

8213 burgundy red 11 g

WEAVING INSTRUCTIONS

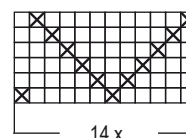
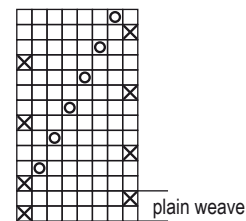
Weave 3 cm with double burgundy cotton yarn 8/2 for the hem. According to the treadling instructions, weave the table runner the poppana cotton strip as tabby background weft and the velvet yarn as pattern weft.

Weave the pattern in two colors with clasped weft technique. Throw the weft into the shed and twist the weft of another color on other side. Drag the weft of another color into the shed so far that the color change point is where you want it. Beat wefts in. See page 36 for instructions.



Treadling instructions for Hortensia table runner are on page 36.

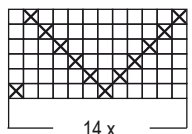
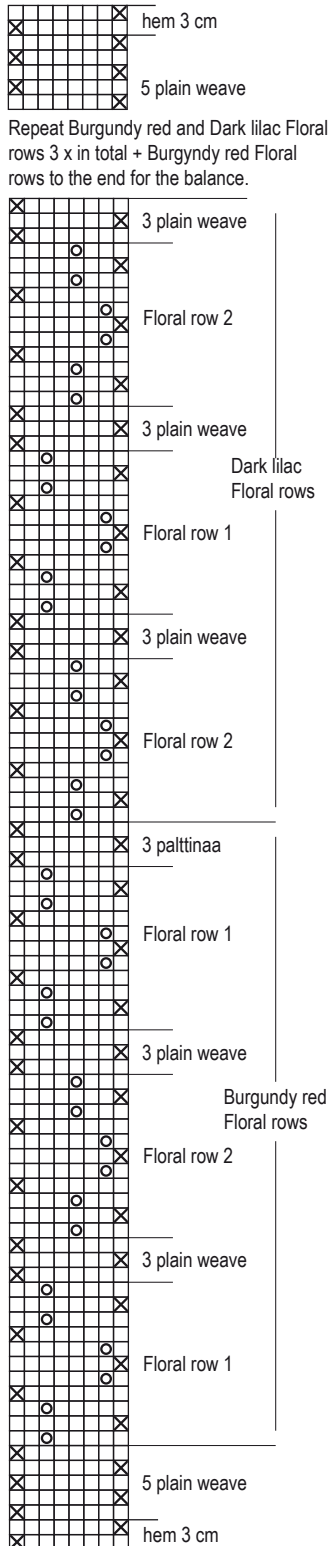
The warp ends at edges must be in heddles. You cannot weave with clasped weft technique if you have floating selvages.



14 x 12 = 168 threads

FINISHING

Sew a 3-step zigzag on the ends. Turn the warp threads to the reverse side over the cotton border and sew one or two straight stitch over the warp threads. Shorten the fringes. Sew the hem with invisible stitches by hand. Steam or press lightly. ▶



14 x 12 = 168 threads

COLOURS OF ROWS OF FLOWERS

1st row of flowers: On the left side of the cloth there are 5 one-coloured flowers, in the middle of the cloth there are 3 two-coloured flowers and on the right side there are 5 one-coloured flowers. In the two-coloured flowers in the middle of the cloth, weave the lowest and top petals of the flower in a lighter color and the middle petals in a darker color.

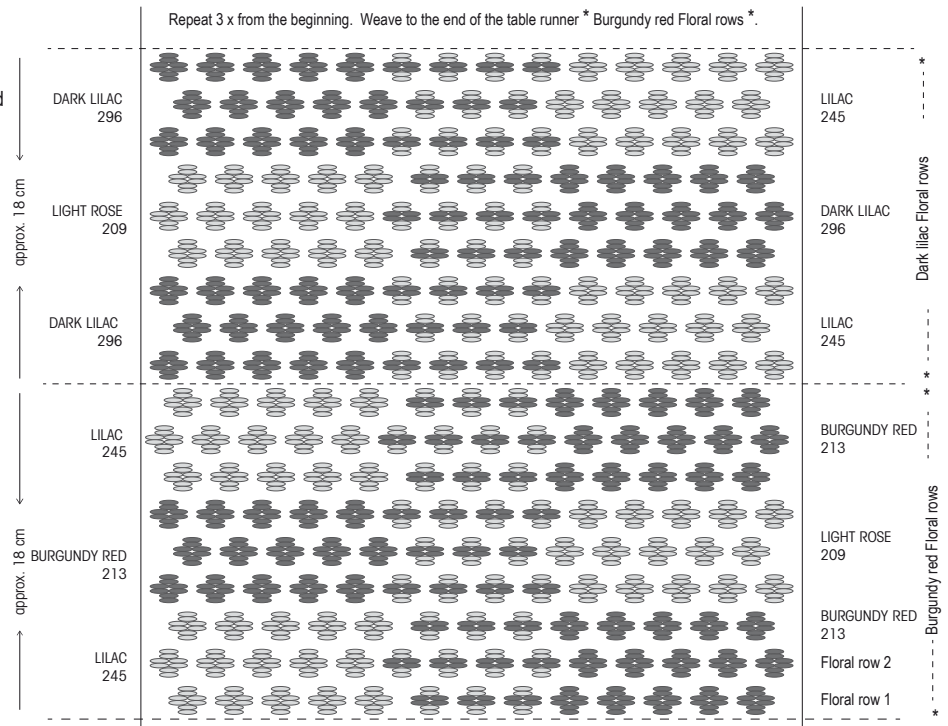
2nd row of flowers: There are 5 one-coloured flowers on the left side, 4 two-coloured flowers in the middle and 5 one-coloured flowers on the right. Weave the two-colored flowers in the middle as above. - Between each row of flowers there are 3 plain weave throws with poppana cotton strip.

COLOUR ARRANGEMENT

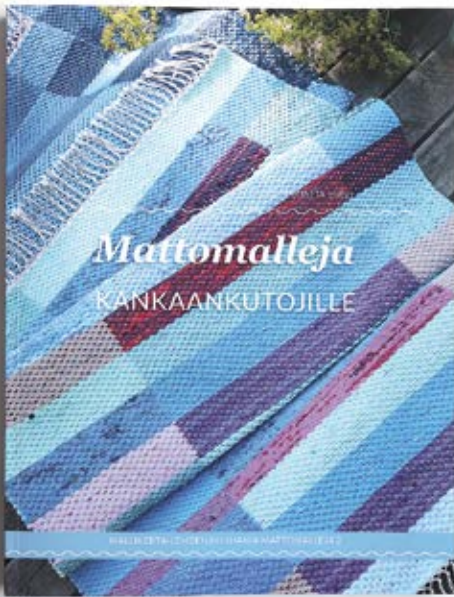
lilac 245 + burgundy 213 (row of flowers 1)
 burgundy + light rose 209 (row of flowers 2)
 lilac + burgundy (row of flowers 1)
 dark lilac 296 + lilac (flower row 2)
 light rose + dark lilac (row of flowers 1)
 dark lilac + lilac (flower row 2)
 Repeat 3 x from the beginning (altogether)

lilac 245 + burgundy 213 (row of flowers 1)
 burgundy + light rose 209 (row of flowers 2)
 lilac + burgundy (row of flowers 1)

The woven length is 125 cm + the hems á 3 cm. The size of the fabric off the loom is 40 x 127 cm. ●



NEW RUG RAG PATTERN BOOK!
(In Finnish)



Choose colors and treadle patterns. Ideas and patterns for your own rugs can be found in the new rug book *Mattomalleja kankaankutojille*.

With two shafts, you can weave not only the ordinary plain weave rugs, but also much more. Rib weave can be used to get stripes crisscross, and it also provides fun clasped weft technique.

Snowflower, Leaflet and Rosette patterns with variations are beautiful to look at and fun to weave. The book also includes twill and summer & winter rugs and patterns to reduce your yarn stash.

Finish the rug wisely and beautifully. Fringes, woven borders, threading, knotting, bias binding and crocheted fringes are featured in the book.

63 patterns and 180 pages.

In Finnish.

www.mallikerta.fi
www.theweaverspick.com

The most beautiful rug designs of the Mallikerta magazine in one book.

Rug rugs

**Rib weave patterns
Clasped Weft rugs**

**Twill
Rose bath**

Beautiful motifs

**Summer and
winter weave**

Tips for finishing



Tip

UNRAVEL NEATLY



The traditional rug pattern "Return" is coming to the next issue.

We started the rug weaving, but after calculation we realized that one of the wefts would not have been enough for the rug of the length we were going to have. So, we had to unravel what we had done.

Unravelling until the beginning of the weave can be done quickly with this trick: Open the apron knots and unravel the wefts from the beginning of the warp. The wefts come out lightly one by one by pulling.



Additional tip: Iron the unraveled cotton rag wefts to be smooth and even again. Otherwise, the part woven with unraveled wefts may look different from the rest of the rug.

REED CONVERSION

Metric	Imperial
Dents per 10 cm	Dents per Inch
60	15
50-45	12
40	10
30	8
25	6
20	5

There are small inaccuracies in the conversions from metric unit reeds to imperial units reeds.

Weaver's Library

MATTOMALLEJA KANKAANKUTOJILLE

The most beautiful rug designs of the Mallikerta magazine 2 (in Finnish).

Choose colors and treadle patterns. Ideas and patterns for your own rugs can be found in the new rug book. 63 patterns. 180 pages. Price €28.70



KANKAANRAKENTAJAN OPAS

This guide (in Finnish) for dressing a loom is a popular textbook on the practical work involved in weaving. The guide includes clear instructions for winding the warp, beaming and tying up the treadles, and tips for actual weaving. 52 pages. A basic guide to keep by your loom. Price €15.80



KANKAANRAKENTAJAN SIDOSOPPI

This guidebook (in Finnish) on the theory of fabric structure includes the basics of fabric structure and the most common weave types for floor looms. 68 pages. Price €18.90



YARNS

Filona, Lappajärven Värjäämö Oy +358 (0)40 838 5449
www.lappajarvenvarjaamo.fi (also in english)

Lankava Oy +358 (0)6 434 5500
www.lankava.fi (also in english)

Garnhuset i Kinna, Sweden
www.garnhusetkinna.se

Poppanavakka Oy +358 (0)3 2525811
www.poppanavakka.fi



*In the next
issue..*

You can also weave a dense and tight rep runner in a table loom. This time we didn't settle for a regular rep runner, we used paper thread as weft.

The autumn issue 3/2022 is out in September

www.mallikerta.fi

On our website, you can order single issues or subscribe to the full volume of the Weaver's Pick magazine, or order back issues from previous years. If you wish, you can also order the guidebooks (in Finnish).

Please make sure to let us know your new address. You can contact us by sending an email, via the website or by using the form.

SUBSCRIPTION PRICES

Full year 2022:
Europe 2022 €46,30 /Four issues
The rest of the world 2022 €52,10 /Four issues

The full year subscription includes four issues.
The invoicing period is a full year. A continuing subscription will automatically continue the following year. The digital form is included in the subscription.

SUBSCRIBER SERVICE

Contact information: Mallikerta MH
Vanhamaantie 3-5 A6, 47200 ELIMÄKI, FINLAND
theweaverspick@mallikerta.fi
www.mallikerta.fi
Tel. +358 40 170 2007 (Mon-Fri 9:00-17:00)
Publisher: Mallikerta MH



The Weaver's Pick

A magazine full of ideas for weavers

Mallikerta MH
Vanhamaantie 3 - 5 A 6
47200 ELIMÄKI
FINLAND

Standard
postage

I WOULD LIKE TO SUBSCRIBE TO
the Weaver's Pick magazine

for myself as a gift

VOLUME 2022
(1-4/2022) subscription to Europe €46,30

VOLUME 2022
(1-4/2022) subscription outside Europe €52,10

My new address as of ___/___/2022

I wish to cancel my subscription at the end of the period
I have paid for.

SUBSCRIBER/NEW ADDRESS

Name

Street address

Postal code and town/city

Telephone

Email

RECIPIENT OF A GIFT SUBSCRIPTION/MY OLD ADDRESS

Name

Street address

Postal code and town/city

Telephone

Email



The Weaver's Pick

*A magazine full of ideas
for weavers*



Follow us on sosial media!



[instagram/mallikerta](https://www.instagram.com/mallikerta)



[facebook.com/mallikerta](https://www.facebook.com/mallikerta)



[pinterest.com/mallikerta](https://www.pinterest.com/mallikerta)

www.mallikerta.fi
www.theweaverspick.com

SOFT VELVET

Chenille yarn provides an attractively soft and shimmering surface for the fabric. It's enough to use just a plain weave structure, where the warp almost hides and leaves the chenille yarn well visible. What would be a better place for velvet fabric than pillows. The simple striped pattern of the pillow fabric is woven with clasped weft technique.

