

# *Grid window*

## 3792

[www.theweaverspick.com](http://www.theweaverspick.com)

[www.mallikerta.fi](http://www.mallikerta.fi)

© *mallikerta*

DESIGN OF PATTERN **Marjatta ja Kirsi** WEAVER **Marjatta Hirvi**

[www.theweaverspick.com](http://www.theweaverspick.com)

[www.mallikerta.fi](http://www.mallikerta.fi)

© *mallikerta*

*Valance for kitchen window*

*Finished size 49 x 533 cm*

*Width when pleated on a curtain rod 320 cm*

## Grid window 3792

**The Warp** Cotton 8/2, tex 74x2, 1 kg = approx 6 800 m,  
Garnhuset i Kinna  
**Warp** width 55,7 cm  
the sett 6 ends/cm  
number of warp ends 334  
length 6,7 m  
**Reed** 1 end per dent in a 60-dent reed (metric)  
**Structure** Lace weave

### INSTRUCTIONS FOR WINDING THE WARP

29 threads unbleached  
23 " green 8276 (darker)  
23 " unbleached  
23 " green 8275 (lighter)  
23 " unbleached  
23 " blue 8225 (darker)  
23 " unbleached  
23 " blue 8279 (lighter)  
144 " unbleached  
334 threads in total

### AMOUNT OF WARP YARN NEEDED

Cotton 8/2, tex 74x2, 1 kg = approx 6 800 m,  
Garnhuset i Kinna  
unbleached (off-white) 218 g  
8276 green (darker) 21 g  
8275 green 21 g  
8225 blue (darker) 21 g  
8279 blue 21 g

### AMOUNT OF WEFT YARN NEEDED

Cotton 8/2, tex 74x2, 1 kg = approx 6 800 m,  
Garnhuset i Kinna  
bleached (white) 280 g = approx. 45 g per one meter ▶





## WEAVING INSTRUCTIONS

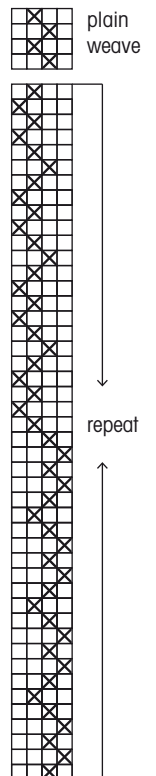
Weave according to the treadling instructions with bleached (white) cotton yarn 8/2. Always continue the weft on the same edge and use that edge as the top of the valance. The density of the weft is 6 threads/cm. The woven length is 616 cm. The size of the fabric off the loom was 52 cm x 595 cm, and the size after wet-finishing was 49 cm x 545 cm. The finished curtain is 533 cm wide, and when pleated on the curtain rod, its width is 320 cm.

## FINISHING

Sew a 3-step zigzag on the edges. Wash the fabric by hand at 30 – 40°C. Lay flat to dry or fold the fabric on a rack. Steam or press through an ironing cloth. In the future, you can wash the valance in a washing machine without spinning.

## SEWING INSTRUCTIONS

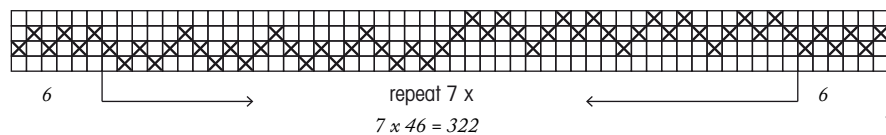
Sew the borders. Finished size of the border is 2 cm and the inside allowance is 1,5 cm. Finish the curtain in accordance with the method of hanging. For this valance, we machine-sewed a wide curtain heading tape. Needle the curtain tape to the upper edge of the curtain, gauze and sew on both edges. Steam the finished valance. ●



[www.theweaverspick.com](http://www.theweaverspick.com)

[www.mallikerta.fi](http://www.mallikerta.fi)

© **mallikerta**



344 threads  
in total

The commercial use of the weaving patterns and the sharing of designs online is forbidden. All contents of The Weaver's Pick are copyrighted by Mallikerta MH.