



*Weave with
wool yarn*

Trails

3794

www.theweaverspick.com
www.mallikerta.fi

© *mallikerta*



A wool rug
Finished size 90 x 218 cm

Trails 3794

The Warp 8/4 Linen rug warp, tex 210x4, black (Linvarp 8/4) 1 kg = approx. 1200 m, Garnhuset i Kinna

Warp width 96,3 cm
 the sett 3 ends/cm
 number of warp ends 285 + 4
 amount of warp yarn needed 255 g / 1 m

Reed 1 end per dent in a 30-dent reed (metric)

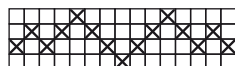
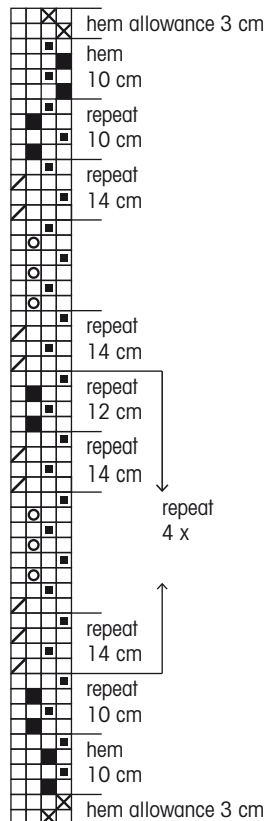
Structure Overshot

www.theweaverspick.com
 www.mallikerta.fi
 © mallikerta

Treadling:

- × = 8/4 Linen rug warp yarn
- = Wilma natural black
- = Muhku grey, double
- / = Muhku light grey, double
- = Muhku white, double

Thread two outmost warp ends doubled.



5 46 x 4 285 + 4 threads in total
 6 x 46 = 276

WEAVING INSTRUCTIONS

Start and finish the rug by weaving a 3 cm inside allowance for the hem with a linen yarn. Weave a 10 cm hem by alternating one throw of Wilma Wool Yarn and one throw of double Muhku Thick Wool Yarn. Weave the rug according to the treadling instructions using the Wilma Thick wool yarn for the plain weave weft and the double Muhku wool yarn for the pattern weft. The sett by 5 cm is 8 picks Wilma Wool Yarn + 8 picks double Muhku Thick wool yarn. The woven length of the rug is 2,26 m + borders.

AMOUNT OF WEFT YARN NEEDED

Wilma Wool Yarn, tex n. 3300, 1 kg = approx. 300 m, Lankava (052) natural black 1,1 kg

Muhku Thick Wool Yarn, tex 850x3, 1 kg = approx. 390 m, Lankava
 (16) Light grey 800 g
 (3) Grey 570 g
 (17) White 30 g

FINISHING

Tie the warp threads using tight square knots. Shorten the threads and sew the hem by hand using a strong thread. Sew the ends of the hem as well. ●