

Price €10,10 incl. VAT

*mallikerta*

# *The Weaver's Pick*

*A magazine full of ideas for weavers* ~~~~~ SPRING 1 | 2021

M'S AND O'S

*Hand Towels with  
Various Colour  
Combinations and  
Treadlings*

**16**

TRY A TECHNIQUE

*Weft-backed  
Fabric*

**23**







# The Weaver's Pick

A magazine full of ideas for weavers

In this issue

## Colourful Quintet Hand Towels

16 ”

Only by changing the colour order of the wefts you can create different patterns and surfaces.

24

A towel fabric has been reinforced by adding picks to the reverse side

## Upholster - Decorate - Sew

”

32

Dense and strong fabric can be used for upholstery, home decoration and sewing projects, like purses and wallets.

## Even or Wrinkled Scarf

14

SPRING  
1/2021

## SCARVES

- WORRY-FREE WRAP** 3744 4  
100% linen scarf is plain weave with extremely loose sett
- WHOOSH WRAP** 3745 7  
The fabric has an uneven and intriguing texture

## TOWELS

- COLOURFUL QUINTET** 3747 16  
M's and O's towels
- WINTER SWIMMING TOWELS** 3748 24  
Thick and warm towels
- BUNNY'S TINY TOWELS** 3749 28  
Soft towels with the table loom

## HOME DÉCOR TEXTILES

- LINEN AND WOOL TAPESTRIES** 3746 10  
Woad - Bluish-grey tapestry, Button - White tapestry and Striped Tapestry from plant-dyed yarns
- WAVE AND ORCHID - MULTIPURPOSE** 3751 32  
The dense and strong fabric can be used for upholstery, home decoration and sewing projects

## ADDITIONAL

- DYED WITH WOAD** 15  
The weft yarns in the blue tapestry have been dyed with woad
- WEFT-BACKED STRUCTURE**  
23Extra weft picks are added under an ordinary structured fabric
- RIB WEAVE RIBBONS** 3750 31  
Weave a grosgrain ribbon on a loom

|                     |   |
|---------------------|---|
| EDITOR-IN-CHIEF     | Marjatta Hirvi  |
| LAYOUT              | Marjatta Hirvi  |
| PATTERN EDITING     | Siiri Korhonen, Kirsi Vakkari   |
| PUBLISHER           | Mallikerta MH   |
| CONTACT INFORMATION | Mallikerta MH<br>Vanhamaantie 3-5 A6, 47200 ELIMÄKI,<br>FINLAND<br>toimitus@mallikerta.fi |
| CUSTOMER SERVICE    | www.mallikerta.fi<br>Tel. +358 40 170 2007  |
| PRINTING HOUSE      | Painotalo Plus Digital  |

The Weaver's Pick magazine is published four times a year. Past issues are available from the publisher. The magazine accepts no responsibility for any typographical errors or other inaccuracies in the content that may cause our readers inconvenience, loss of working time or financial damage. The commercial use of the weaving patterns and the sharing of designs online is forbidden.

40th volume 2021  
ISSN 0782-1530



## All kinds of fabrics

The sett is important in fabric design, and it often goes wrong. Resleying the reed is a pretty usual procedure when we develop new designs for weaving. If we can't beat enough of picks per centimetre or the sett is not adequate due to some other reasons, we will replace the reed with a more open or finer one. The changing of the reed is surprisingly quick. The sett of the fabric can be also the starting point of a design process. Sometimes we want an extraordinary fabric, which needs to be very hard wearing and dense, or perhaps as thin and scattered as possible.

The scarves in this issue are as thin as gauze. The idea was to produce a thin and wrinkled fabric that would be comfortable and worry-free. The fabric was woven from linen, which as a stiff yarn stays better in its place in the weaving process than more flexible yarns. Besides, linen is easily wrinkled, so making the choice was easy. The sett was supposed to be as open as possible but to keep the yarns in their places in the cloth. In addition to the linen scarf, we wove a mixed material scarf from wool and linen aiming to create uneven texture. Using a large loom for the weaving of the scarves can be beneficial because the tension of the warp ends can be easily kept stable and firm.

Accidentally, the patterns in this issue have the two extremes in sett presented. The scarves are gauze-like thin, whereas the Winter Swimming Towels are very thick and dense. The thick structure in the towels is produced by weft backing. The warp gets covered between the face side and the reverse side wefts. The structure has been used before for furnishing fabrics or blankets, to create strength and thickness. If you want to upcycle or bust yarn stashes, remember that the reverse side weft thread can be lower quality if it isn't visible in use. You can already try the structure to your existing warp by adding some extra treadles.

There's every day more daylight to brighten our weaving spaces now when the darkest winter time is over. Working on a loom gives you a moment to concentrate on weaving instead of the pandemic and other worries. Weave fabrics and enjoy the spring time! *Marjatta*







DESIGN OF PATTERN **Marjatta Hirvi** WEAVER **Kirsi Vakkari***Linen Scarf**Size finished 42 x 183 cm**Size wrinkled 25 x 150 cm**Turquoise blue wool and linen blend scarf**Size finished 40 x 174 cm*

## Worry-free Wrap

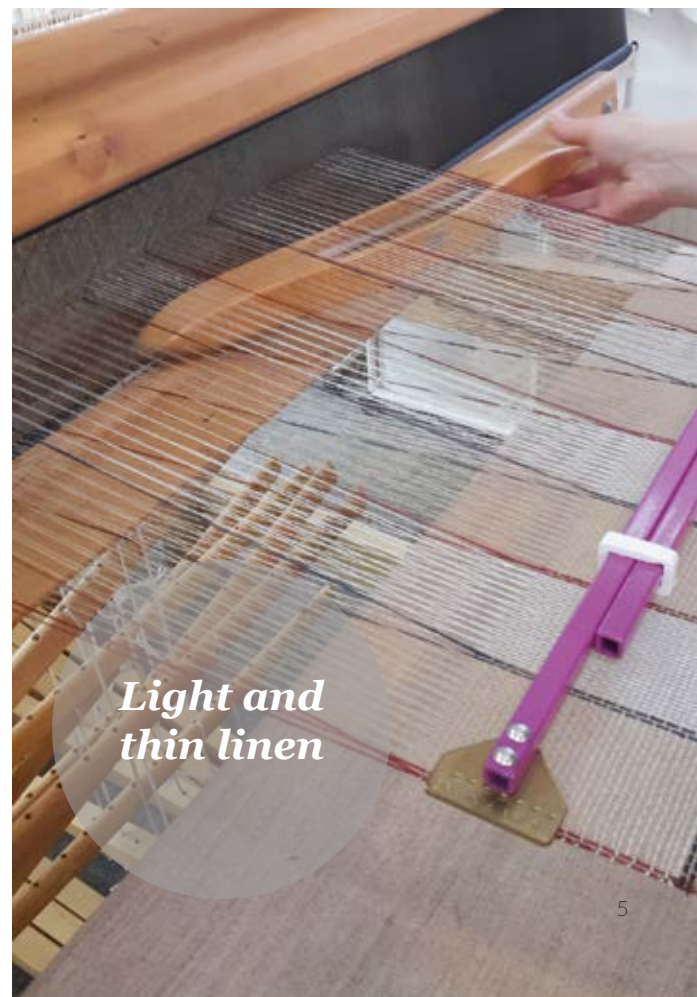
# 3744

### WEAVE AND WRINKLE

100% linen scarf is plain weave with extremely loose sett. The wefts are barely staying in their places. Stiffness and poor elasticity of the linen fabric make it easy to wrinkle. We took advantage of this usually unwanted characteristic and utilized it in the finishing process. The water-soaked scarf was crumpled properly, unfurled only a little and dried on a rack. If you prefer an even scarf, you can omit the crumpling and only wet-finish the fabric. The fabric gets denser and softer in a good way and the weave looks more even.

In addition to the linen scarf, we wove another scarf of a similar style with linen and wool. The turquoise blue Whoosh Wrap has two linen threads and two wool threads alternating in both warp and weft. The fabric has an uneven and intriguing texture. The weaving of a fabric with a loose sett is challenging because the wefts are sliding easily out of their places. Try to keep the sett of the weft as even as possible and handle carefully the woven fabric. The structure will even out and get denser once wet-finished.

The casual and stylish appearance of the scarves makes it a suitable accessory for many occasions. You can take it with you for hiking or wrap it around during a dinner party as well. ▶



*Light and  
thin linen*



## AMOUNT OF WARP AND WEFT YARN NEEDED

Line linen 16/1, 1 kg = approx. 10 000 m, Garnhuset i Kinna

| Colour:        | Warp 5,8 m: | Weft for one scarf: |
|----------------|-------------|---------------------|
| 67 beige       | 57 g        | 17 g                |
| 21 silver grey | 55 g        | 16 g                |
| 50 brown       | 14 g        | 4 g                 |
| 28 dark blue   | 9 g         | 3 g                 |

## WEAVING INSTRUCTIONS

The sett is 5 picks/cm. Dark blue and brown stripes have been woven with a doubled yarn. The wefts are sliding easily out of their places when weaving a fabric with a loose sett. The structure will even out once wet-finished. The woven length was 185 cm measured under tension. The size was 42 x 183 cm off the loom.

### Stripes:

- 3 picks brown (doubled yarn)
  - 5 cm beige
  - 2 picks dark blue (doubled yarn)
  - 5 cm silver grey
  - 2 picks brown (doubled yarn)
  - 1 pick brown (doubled yarn) = to balance the end of the scarf
- } Repeat 16 times or until desired length

## FINISHING

Twist the fringes with 8 threads (4 + 4). The length of the twisted fringe is 10 cm..

### Even scarf

Soak the scarf in warm water with a little detergent. Iron through a damp pressing cloth.

### Wrinkled scarf

Soak the scarf in 40 - 60°C water with a little detergent. Rinse. Squeeze the scarf a tight wrinkled ball and let dry on a rack. Unfurl the ball, when the fabric is almost dry and the wrinkles are fixed. Let it dry completely. ●

## LINEN SCARF

The warp Line linen 16/1, tex 103, 1 kg = approx. 10 000 m  
 Warp width 44 cm  
 number of warp ends 240  
 length 5,8 m (2 scarf)  
 the sett 5 ends/cm and narrow stripes 10 ends/cm

Reed 50/1 and stripes 50/2 = 1 per dent in a 50-dent reed or 2 per dent (stripes)

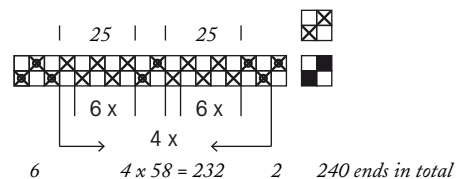
Structure Plain weave

## INSTRUCTIONS FOR WINDING THE WARP

- 2 threads brown (50)
  - 4 threads brown
  - 25 threads beige (67)
  - 4 threads dark blue (28)
  - 25 threads silver grey (21)
  - 6 threads brown
- } 4 x

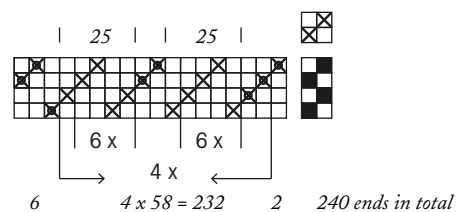
2-shaft loom:

⊗ = doubled thread (brown and dark blue)



4-shaft loom:

⊗ = double thread (brown and dark blue)





DESIGN OF PATTERN **Marjatta Hirvi** WEAVER **Kirsi Vakkari**



*Wool and linen scarf*

*Size finished 40 x 174 cm*

## **Whoosh Wrap 3745**

The warp Line linen 16/1, tex 103, 1 kg = approx. 10 000 m  
and Merino Sheerwool 28/2, 50 g = approx. 700 m

Warp width 45,6 cm  
number of warp ends 248  
the sett 5 ends/cm and stripes 10 threads/cm  
length 2,7 m (1 scarf)

Reed 50/1 and stripes 50/2 = 1 per dent in a 50-dent  
reed or 2 per dent (stripes)

Structure Plain weave



### INSTRUCTIONS FOR WINDING THE WARP

2 threads forest green wool yarn (4-5034)

\* Repeat 4 times:

4 threads forest green wool yarn

24 threads: 2 threads silver grey linen yarn (21)

2 threads green turquoise wool yarn (4-5005)

2 threads silver gray linen yarn

4 threads turquoise wool yarn (4-4007)

24 threads: 2 threads silver grey linen yarn

2 threads light blue wool yarn (4-4008)

2 threads silver grey linen yarn \*

6 threads forest green wool yarn

248 threads in total

The linen ends are tightening when the weaving progresses. If you are going to weave several scarves to the same warp, cut off the piece after each scarf. This way you'll get even warp tension and clean sheds to start with. Use a lot of warp beam sticks when beaming. ▶







## AMOUNT OF WARP YARN NEEDED

Line linen 16/1, 1 kg = approx. 10 000 m, Garnhuset i Kinna  
21 silver grey 30 g

100 % Organic Merino wool Nm 28/2 GOTS,  
50 g = approx. 700 m, Venne-Colcoton Unikat  
4-5005 green turquoise 8 g  
4-4008 light blue 9 g  
4-5034 forest green 3 g  
4-4007 turquoise 3 g

## AMOUNT OF WEFT YARN NEEDED

Line linen 16/1, 1 kg = approx. 10000 m, Garnhuset i Kinna  
21 silver grey 30 g

100 % Organic Merino wool Nm 28/2 GOTS  
50 g = approx. 700 m, Venne-Colcoton Unikat  
4-5005 green turquoise 8 g  
4-4008 light blue 9 g  
4-5034 forest green 2 g  
4-4007 turquoise 2 g

## WEAVING INSTRUCTIONS

The sett is 5 picks/cm (balanced weave). Thin dark green and turquoise blue stripes have been woven with a doubled yarn.  
The woven length was 191 cm measured under tension.

The fabric is designed to have uneven surface and texture.

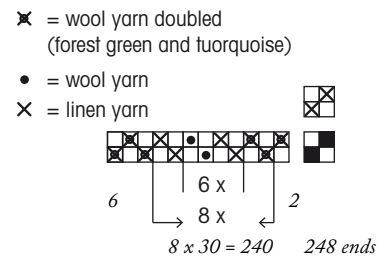
Loose weave fabrics have a tendency of wefts moving out of their places, so don't panic if that happens. The structure will even out once wet-finished.

Insert corrugated cardboard into the cloth beam at the beginning for protecting the woven piece. Try to keep the sett of the weft as even as possible. Cover the newly woven fabric on the breast beam with a cloth during the weaving to prevent any abrasion.

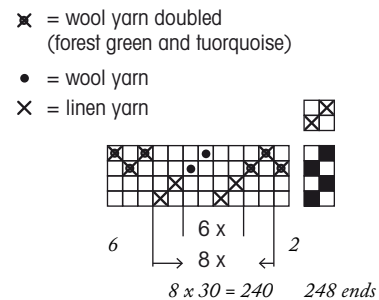
### Stripes:

3 picks forest green wool yarn (doubled yarn)  
\* 5 cm: 2 picks light grey linen yarn and 2 picks green turquoise wool yarn alternating  
2 picks silver grey linen yarn  
2 picks turquoise wool yarn (doubled yarn)  
5 cm: 2 picks light grey linen yarn and 2 picks light blue wool yarn alternating  
2 picks light grey linen yarn  
2 picks forest green wool yarn (doubled yarn)\*  
Repeat \* - \* 16 times or until desired length  
1 pick forest green wool yarn (doubled yarn) = to balance the end of the scarf.

2-shaft loom:



4-shaft loom:



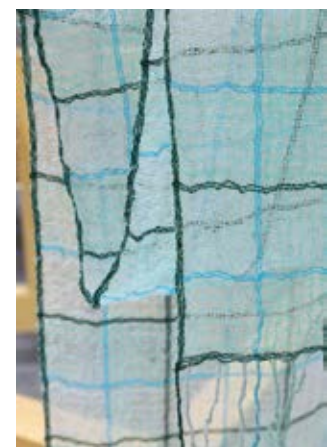
## FINISHING

Twist the fringes with 8 threads (4 + 4). We soaked and lightly felted the fabric in order to shrink the wool yarns and increase the density of the fabric:

Place a bubble wrap over a bamboo curtain. Place the scarf on top of them, and cover it with a loose net, for example, a sheer curtain or a mosquito net. Rub the fabric through the net with hot water and soap (for example Marseille or Pine soap). Wrap and unwrap the bamboo curtain couple of times. Remove the scarf from the curtain and rinse with warm and cold water alternating. Squeeze the extra water out and hang to dry. Steam or press the dry scarf. Trim the ends of the fringes.

*You can also only wet-finish the fabric:*

Soak the scarf in warm water with a little detergent. Move and squeeze the fabric gently. Rinse in warm and cold water alternating. Squeeze the extra water out and hang to dry. Steam or press the dry scarf. •









DESIGN OF PATTERN **Marjatta Hirvi** WEAVER **Kirsi Vakkari**

# Linen and wool tapestries

## 3746

|                  |  |
|------------------|--|
| <b>The warp</b>  | Line linen (long fiber) Nel 16/4, unbleached,<br>tex 104x4<br>1 kg = 2 400 m, Lappajärven Värjäämö   |
| <b>Warp</b>      | width 63,7 cm<br>the sett 4 threads/cm<br>number of warp ends 255 + 2 additional ends<br>for the edges = 257<br><br>length 4,35 m<br>amount of yarn needed 485 g |
| <b>Reed</b>      | 40/1 (1 end per dent in a 40-dent reed)  |
| <b>Structure</b> | Overshot   |

### Woad - Bluish-grey tapestry

Finished size 60 x 106 cm

#### WEAVING INSTRUCTIONS

Weave 6 cm plain weave for the hem with a turquoise-blue wool yarn at the beginning and the end of the fabric. Weave the tapestry according to the treadling instructions using grey linen yarn as a tabby weft and single wool yarn as a pattern weft. Weave the treadling repeat with blue or light blue wool in turns. Woven length is 103 cm + hems.

The sett is 6 tabby picks and 6 pattern picks per cm.

#### AMOUNT OF YARN NEEDED FOR THE WEFT

Line linen Nel 16/4, 1 kg = 2 400 m, Lappajärven Värjäämö,  
19 bluish grey 167 g.

Esito Worsted wool blanket yarn, tex 143x3, (1 kg = 2 300 m)  
off-white dyed with woad, blue 166 g and light blue 76 g.

#### FINISHING

Finish by sewing 3-step zigzag stitches on the ends. Stitch the hems by hand with a linen thread or other strong yarn.

The inner hem allowance is approx. 1 cm and the height of the finished hem is 2,5 cm. ▶







**Tip** Typically the hem is accidentally narrower than the rest of the fabric. Use the temple as soon as possible from the beginning of the weaving and remember to adjust it to the same width as the warp is sleyed in the reed. You can weave scrap yarn at the beginning of the fabric to be able to attach the temple before the actual piece is woven.

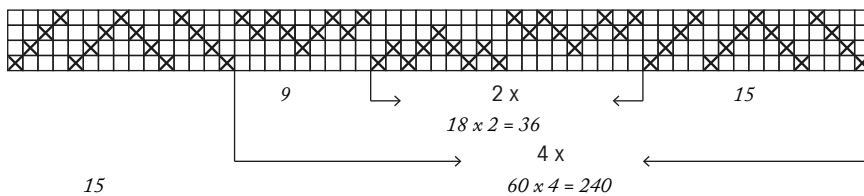
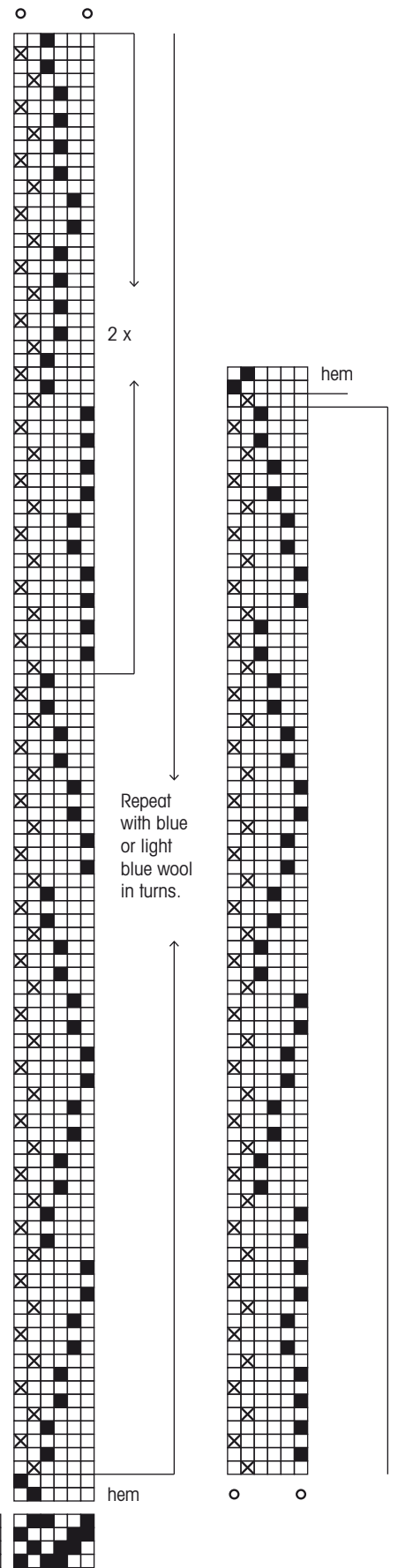
WOAD - BLUISH GREY TAPESTRY

Treadling:

- = blue wool yarn
- × = bluish grey
- Line linen 16/4

Threading:

Double the edge thread on both sides.



255 ends  
+ 2



## Button - White tapestry

Finished size 59 x 94 cm

### WEAVING INSTRUCTIONS

Weave 6 cm plain weave for the hem with a wool yarn at the beginning and the end of the fabric. Weave the tapestry according to the treadling instructions using the warp yarn as a tabby weft and double wool yarn as a pattern weft.

Woven length is 92 cm + hems. The sett is 4 tabby picks and 4 (doubled) pattern picks per cm. Finish the same way as the Woad tapestry on the page 11. ▶

### AMOUNT OF YARN NEEDED FOR THE WEFT

Line linen Nel 16/4,  
tex 104x4, 1 kg = 2 400 m,  
Lappajärven Värjäämö,  
unbleached 97 g.  
Esito Worsted wool blanket yarn,  
tex 143x3, (1 kg = 2 300 m),  
7001 white 220 g.

### BUTTON - WHITE TAPESTRY

Treadling

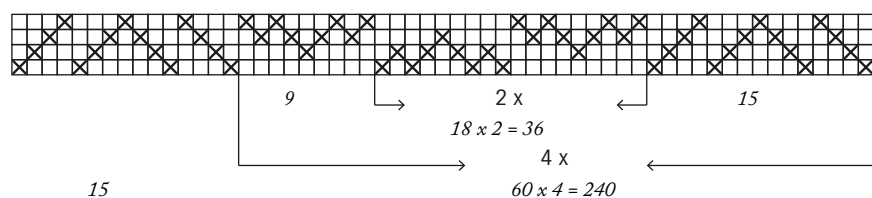
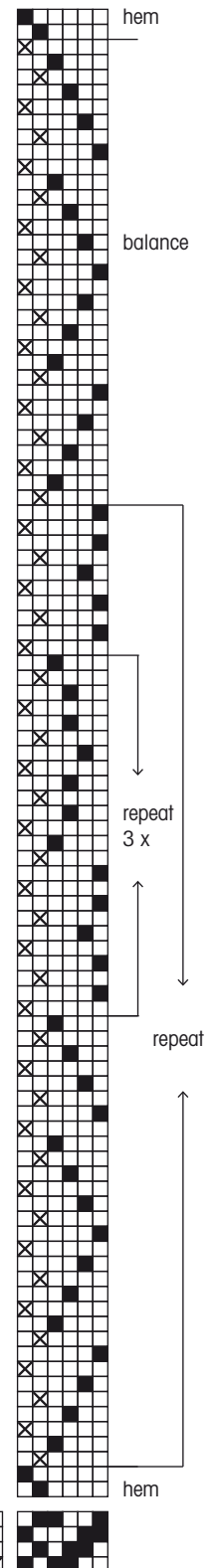
■ = white wool yarn doubled

× = Line linen 16/4

unbleached

Threading:

Double the edge thread on both sides.



255 ends  
+ 2





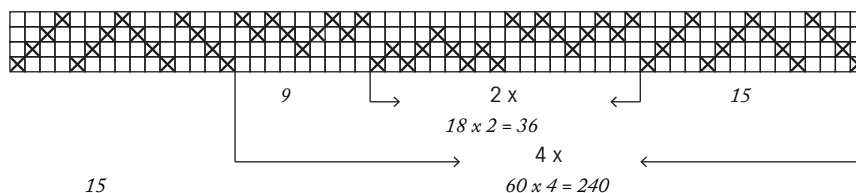
## Striped Tapestry From plant-dyed yarns

Finished size 60 x 74 cm

### WEAVING INSTRUCTIONS

Weave 6 cm plain weave for the hem with a wool yarn at the beginning and the end of the fabric. Weave the tapestry according to the treadling instructions using the warp yarn as a tabby weft and wool yarn as a pattern weft. See the weft colour order in the treadling instructions.

Woven length is 76 cm + hems. The sett is 9 tabby picks and 9 pattern picks per 2 cm. ●



15

End to the green pattern stripes. Balance with yellow stripe and weave the upper hem.

### AMOUNT OF YARN NEEDED FOR THE WEFT

Line linen Nel 16/4,  
tex 104x4, 1 kg = 2 400 m,  
Lappajärven Värjäämö,  
unbleached 91 g.  
Plant-dyed wool yarns, various  
weights, 1 kg = n. 1 800 – 2300 m,  
different colours, total 151 g.

### FINISHING

Finish by sewing 3-step zigzag stitches on the ends. Stitch the hems by hand with a linen thread or other strong yarn. The lower side of the fabric has been used as the right side. Fold and stitch the hem to the wrong side.

### STRIPED TAPESTRY FROM PLANT-DYED YARNS

The lower side of the fabric has been used as the right side.

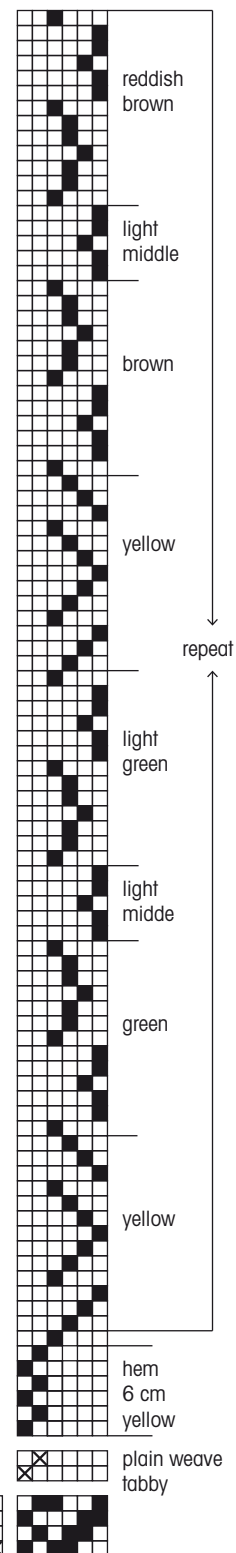
#### Treadling

■ = wool yarn  
× = Line linen 16/4

Poljentaan on merkitty vain kuviokuteef.  
Heitä jokaisen kuviokuteefin väliin yksi  
palttinaakude.

#### Threading

Double the edge thread on both sides..



255 ends  
+ 2



## The weft yarns in the blue tapestry have been dyed with woad

This is how we dyed the yarns:

1. Shred the woad leaves in a pot. Pour boiling water over the leaves and fill the pot. Let it simmer under the lid for about 30-40 minutes. Keep the dye bath warm.

2. Strain the leaves from the liquid. The first year woad harvest has the most dye. Woad is a biennial plant. The first year it grows a rosette and the second year the flower and the seeds.

3. Add sodium carbonate to the bath to make it alkaline (pH 9-10). Oxidize the bath by whipping it with a whisk or by pouring it back and forth between two pots for 5 - 10 minutes. The dye will change to dark green.

4. Heat the bath to 50°C and add carefully the sodium dithionite. Use personal protective equipment! Let it sit for 30 - 40 minutes. The colour of the bath turns yellowish-green.

5. Soak the warm and wet wool yarns to the bath and let them take up the colour for 10-15 minutes. The bath shouldn't oxidize anymore, so stir the bath only as much as it is needed to ensure an even colour.

6. Remove the yarns from the dye bath. The colour of the yarns will change gradually from yellowish-green to blue. Let the yarns oxidize for 10 minutes. Rinse. You can add a little vinegar to the last rinse water.

- Explore books on dyeing before trying it. Follow the safety instructions.

We had almost finished the weaving of the white tapestry when the cold days of autumn warmed up once more. We had still a chance to try out dyeing with woad and take out the dyeing pots! If we succeeded in the dyeing, we would get the weft yarns for a tapestry.

Woad (*Isatis tinctoria*) can be used to get blue dye the same way as indigo (*Indigofera tinctoria*). The dye is applied to the yarn with a vat dyeing process. Besides the ordinary equipment for stovetop dyeing, you need sodium carbonate and sodium dithionite (=sodium hydrosulfite). Sodium dithionite is a strong chemical, therefore you need a respirator face mask, eye protectors and gloves. Carry out the dyeing outside or in a well-ventilated space.

You need approximately: 100g yarn – 400-800 g fresh/dried(?) leaves – 5 litres of dye bath – 50 g sodium dithionite. In this dye bath we used additionally woad powder because we didn't have enough leaves ( 280 g leaves + 5 g of powder – 7 litres of dye bath – 60 g sodium dithionite – 300 g yarn).



The most magical moment happens when the yarns are lifted from the dye bath. The yarn is yellowish-green in the bath, but changes to blue due to the air exposure.









DESIGN OF PATTERN **Siiri Korhonen** WEAVER **Siiri Korhonen***Hand towels, finished size 37 x 40 cm*

## Colourful Quintet

### 3747

M's and O's can be varied by changing the treadling. You can create multiple different patterns and surfaces by weaving with different colour orders. This traditional weave structure can be produced with only four shafts and treadles.

The warp Cotton 8/2 Bockens, tex 74x2,  
1 kg = approx. 6500 m

Warp width 45 cm  
number of warp ends 360  
the sett 8 ends/cm  
length 3,30 m

Reed 40/2 (2 per dent in a 40-dent reed)

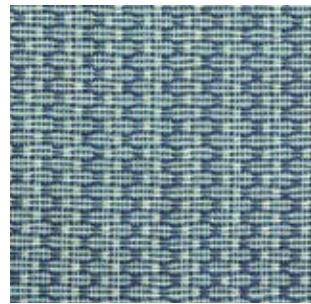
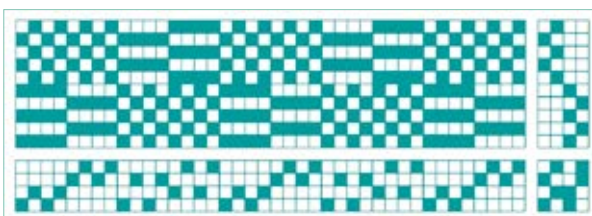
Structure M's and O's

#### INSTRUCTIONS FOR WINDING THE WARP

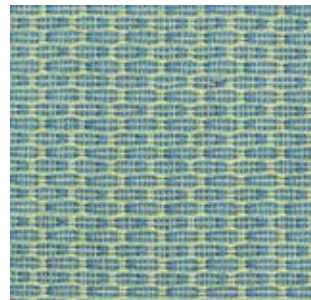
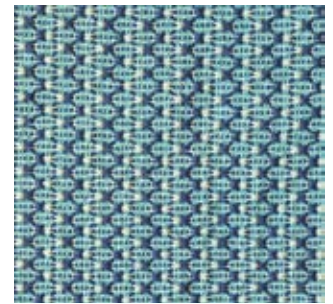
8 threads yellow 2030  
344 threads mint green 1312  
8 threads blue 603

#### AMOUNT OF YARN NEEDED FOR THE WARP

2030 yellow 4 g  
1312 mint green 165 g  
603 blue 4 g  
173 g in total ▶



Dark-Coloured Towel



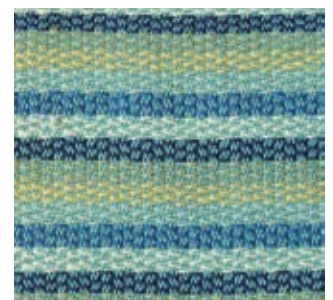
Light-Coloured Towel



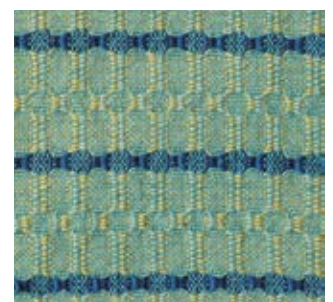
Pseudo-Huck Towel



Stripe Towel



Yellow towel



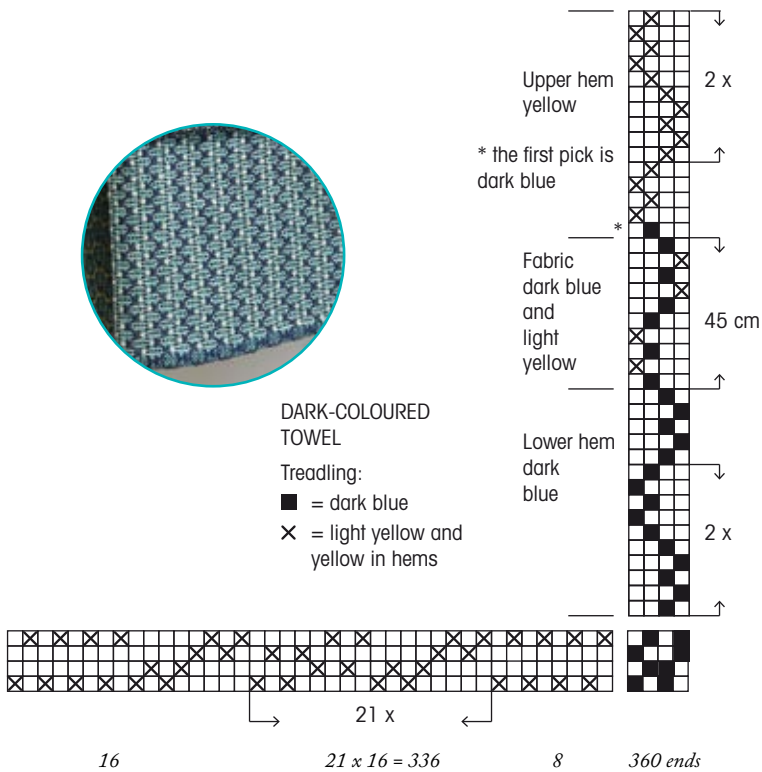
In the picture on the left side the textile is just taken off the loom, and in the picture on the right side the fabric has been washed. The true structure of the M's and O's is revealed after washing the fabric for the first time.



**DARK-COLOURED TOWEL**

Treadling:

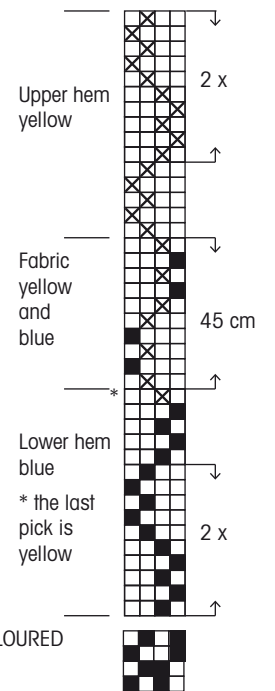
- = dark blue
- × = light yellow and yellow in hems



**LIGHT-COLOURED TOWEL**

Treadling

- = blue
- × = yellow





**AMOUNT OF YARN NEEDED FOR THE WEFT**

Cotton 8/2 Bockens ja Cotton 8/2 Garnhuset i Kinna, tex 74x2, 1 kg = approx. 6500 m.

The amount of weft needed for each towel is approximately 30 g. Each towel has individual instructions for the weft colours and their specific amounts.

- No floating selvages, except in the Stripe Towel.
- The pattern will stand out after the first wash.

**FINISHING FOR ALL OF THE TOWELS**

Finish the edges of each towel with 3-step zigzag stitches and cut apart. Iron 2-fold hems and fasten with pins. Place a colourful towel hanging loop inside the hem of one of the corners of the towel. Sew the hems and the loop in its place with invisible ladder stitches by hand.

**Dark-Coloured Towel**

Finished size 37,5 cm x 40 cm

**WEAVING INSTRUCTIONS**

Weave the lower hem at least 3 cm wide according to the treadling instructions with dark blue. Follow the instructions and weave 45 cm with light yellow and dark blue. Weave the upper hem at least 3 cm wide with yellow, except the first pick with dark blue.

The sett is 7,5 picks/cm.

The woven length with the hems is 51 cm.

The size of the fabric off the loom was 41,9 cm (width) x 47,5 cm (height) before the wash, and 37,5 cm x 43,5 cm after wash.

**AMOUNT OF YARN NEEDED FOR THE WEFT**

Cotton 8/2, tex 74x2, 1 kg = approx. 6500 m

dark blue 603 Bockens 17 g

yellow 2030 Bockens 2 g

light yellow 8217 Garnhuset 10 g

**Light-Coloured Towel**

Finished size 37,5 cm width x 40 cm length

**WEAVING INSTRUCTIONS**

Weave the lower hem at least 3 cm wide according to the treadling instructions with blue, except the last pick with yellow. Follow the instructions and weave 45 cm with yellow and blue. Weave the upper hem at least 3 cm wide with yellow.

The sett is 7,5 picks/cm.

The woven length with the hems is 51 cm. The size of the fabric off the loom was 41,8 cm (width) x 47 cm (height) before the wash, and 37,1 cm x 43,2 cm after wash.

**AMOUNT OF YARN NEEDED FOR THE WEFT**

Cotton 8/2 Bockens, tex 74x2, 1 kg = approx. 6500 m

603 dark blue 2 g

137 blue 9 g

2030 yellow 14 g

**Pseudo-Huck Towel**

Finished size 38 cm x 41 cm

**WEAVING INSTRUCTIONS**

Weave the lower hem at least 3 cm wide according to the treadling instructions with dark blue and yellow. Follow the instructions and weave approximately 45 cm with light green and dark blue. Weave the upper hem at least 3 cm wide with dark blue and yellow.

The sett is 9 picks/cm.

The woven length with the hems is 51 cm.

The size of the fabric off the loom was 42,6 cm (width) x 48 cm (height) before the wash, and 38 x 44 cm after wash.

**AMOUNT OF YARN NEEDED FOR THE WEFT**

Cotton 8/2, tex 74x2, 1 kg = approx. 6500 m

603 dark blue Bockens 17 g

8269 light green Garnhuset 11 g

2030 yellow Bockens 3 g

**Stripe Towel**

Finished size 40 cm x 39,5 cm

**WEAVING INSTRUCTIONS**

Use floating selvages. Weave the lower hem at least 3 cm wide according to the treadling instructions with yellow. Follow the instructions and weave approximately 45 cm. Weave 1 cm with each colour. The last colour is blue (see the instructions for the last stripes of the towel). Weave the upper hem at least 3 cm wide with yellow.

The sett is 8 picks/cm.

The woven length with the hems is 50,4 cm.

The size of the fabric off the loom was 43 cm (width) x 46,6 cm (height) before the wash, and 39,8 cm x 42,3 cm after wash. ▶

## AMOUNT OF YARN NEEDED FOR THE WEFT

Cotton 8/2, tex 74x2, 1 kg = approx. 6500 m  
 603 dark blue Bockens 4 g  
 2030 yellow Bockens 7 g  
 137 blue Bockens 4 g  
 8269 warm light green Bockens 4 g  
 8269 light green Garnhuset 4 g  
 8217 light yellow 4 g

## Yellow Towel

Finished size 37,5 cm x 42 cm

### WEAVING INSTRUCTIONS

Weave the lower hem at least 3 cm wide according to the treadling instructions with blue and dark blue weft alternating.

Follow the instructions and weave approximately 47 cm. Alternate with yellow and light green in the light areas of the towel. Blue and dark blue are alternating in the dark stripes. Intertwine the two wefts at the edge to make sure that the outermost warp thread gets caught.

You can switch the places of yellow and light green in the light area every other stripe. If you start the first stripe with green, start the next stripe with yellow. This way the colours are changing places in the rib parts of the structure. See the treadling instructions. Weave the upper hem by continuing to weave with the blue wefts until the blue part is at least 3 cm wide.

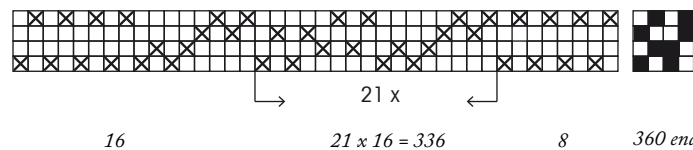
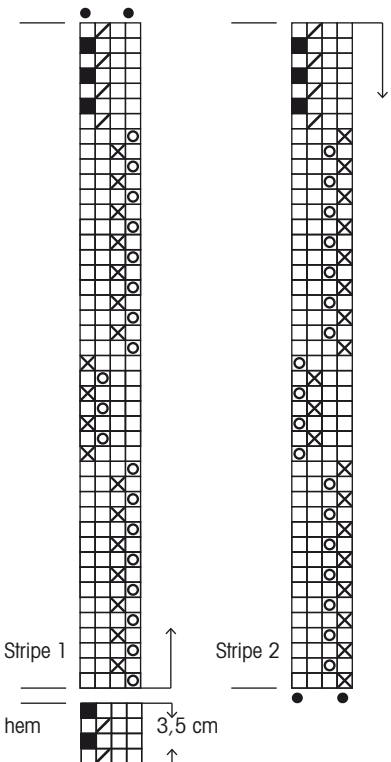
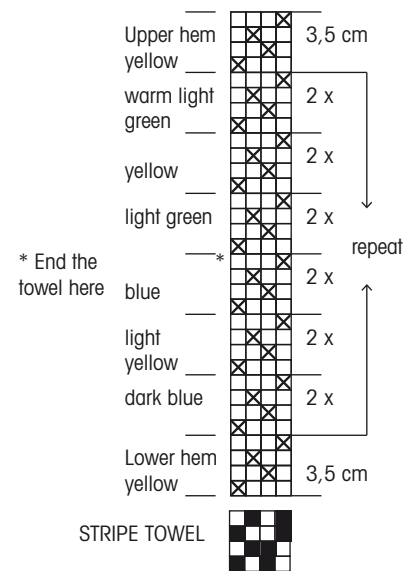
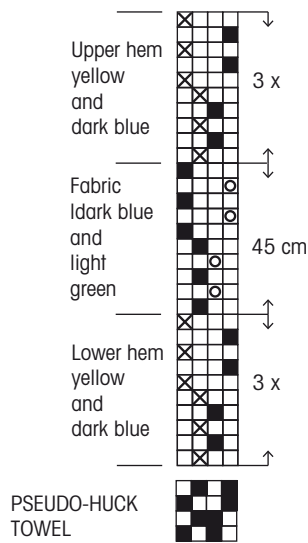
The sett is 7,5 picks/cm.

Kudottu pituus päärmeineen on 53,4 cm.

The woven length with the hems is 41,6 cm (width) x 48,5 cm (height) before the wash, and 37,2 cm x 44,9 cm after wash.

## AMOUNT OF YARN NEEDED FOR THE WEFT

Cotton 8/2 Bockens 8/2, tex 74x2,  
 1 kg = approx. 6500 m.  
 603 dark blue 3 g  
 137 blue 4 g  
 2030 yellow 11 g  
 8269 light green 10 g













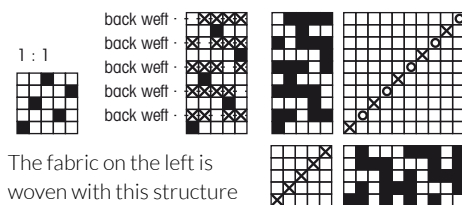
Marjatta Hirvi

## Weft-backed structure

There is a simple way to make a fabric denser and stronger: Extra weft picks are added under an ordinary structured fabric. The binding points of the back picks are placed between long floats of the front picks. When you beat, the front picks are sliding next to each other and covering up the back pick between them. The structure needs to be weft-faced or at least balanced to make sure that the back picks will be covered. If the wefts on the reverse side and the face side are the same weight, the back picks are usually placed every other row (the ratio of the face to back weft threads is 1:1). The back weft thread can be thicker than the face weft thread when there would be 2 picks for the face structure and one pick for the reverse structure (the ratio of 2:1). There could be even 3 picks for the face and one pick for the reverse side alternating. If you are using a countermarch loom, you need an extra treadle for every differently bound back pick. It is surprisingly easy to weave weft-backed structures with a table loom.

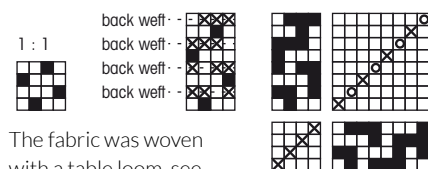
### WEFT-BACKED SATINS

#### Weft-faced satin weave



◁ The fabric on the left is woven with this structure

#### Warp-faced 4-harness satin weave (false satin)



The fabric was woven with a table loom, see page 28.

The velvet thread on the back side was thicker than the face side weft. See the weaving instructions on page 26.

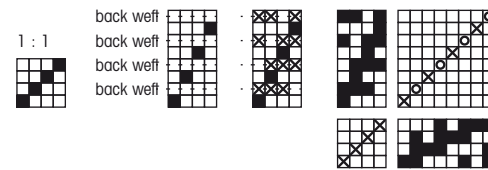
*The back weft can be thicker*



### WEFT-BACKED TWILLS

#### Weft-faced twill

The ratio of the wefts 1:1



1. Choose a twill structure and mark the repeat. Mark the front picks just like they are in the ordinary structure, but leave a space between each row for the back pick.

2. Mark the back picks: Choose a binding point which has warp risers (=blank squares) over and under it. Mark all of the other squares on the row except the warp thread that the back pick will be bound to (blank square). Mark the tie-up.

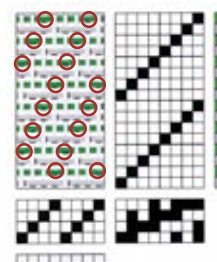


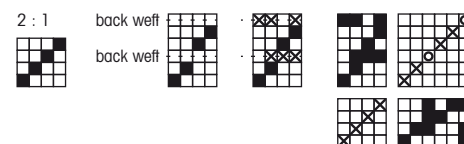
TABLE LOOM

The binding point of the back pick (green) has been circled in the pattern draft. There are long floats of the front picks above and below the binding points of the back picks. Front picks will eventually settle together and hide the back picks under the dense structure.

It is easy to weave weft-backed fabric with a TABLE LOOM. Weave it like a weft-faced structure, but add an extra back pick after each pick. For the back pick, there must be every shaft raised except the shaft responsible for the binding point.

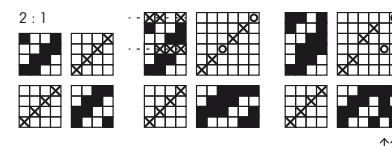
#### Weft-faced twill

The ratio of the wefts 2:1. The back weft thread is thicker than the face weft thread.



#### Balanced twill

The ratio of the wefts 2:1. The back weft thread is thicker than the face weft thread.



If you already have a suitable warp on your loom, you can add extra treadles next to your existing ones for the back picks. This way you can easily start experimenting with weft-backed structures.

### Tip!

Use up uneven and lower quality yarns for the back weft. They are still suitable for fabrics where the reverse side isn't visible during use.



DESIGN OF PATTERN **Marjatta Hirvi** WEAVER **Kirsi Vakkari**

*Finished size 72 x 145 cm*

## *Winter Swimming Towels 3748*

It is comfortable to wrap in thick and warm towels after winter swimming. The same towels can be laid in the hot sand of the beach on warm summer days.

The fabric has a simple structure, where extra wefts have been inserted in the reverse side of an ordinary structured fabric. This structure is well suited to furnishings and other uses that require high durability because the additional picks strengthen the fabric. The other side can be woven for example solid-coloured and the other side can be striped. The reverse side weft thread can also be thicker than the face side weft thread. See page 23 for more information on the weave structure. Small weft-backed pastel coloured towels on page 28 have been woven with a table loom.

The warp Cotton 8/2, natural white  
tex 74x2, 1 kg = approx. 6800 m  
Warp width 85 cm  
number of warp ends 680  
the sett 8 ends/cm  
length 4,70 m  
amount of yarn needed 470 g

Reed 40/2 (2 per dent in a 40-dent reed)  
Structure Weft-Backed Satin



### *Strip Towel*

Finished size 72 x 146 cm, washed

#### AMOUNT OF WEFT YARN NEEDED

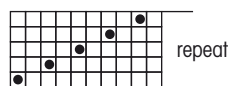
Eko Mercerised Cotton 8/2, tex 74x2,  
1 kg = 6 800 m, Garnhuset i Kinna  
843 red 307 g  
Cotton 8/2, tex 74x2, 1 kg = approx. 6800 m, Bockens  
2080 red 155 g  
8274 green (Garnhuset) 75 g  
603 blue 41 g  
11 yellow 12 g  
unbleached = natural white 11 g



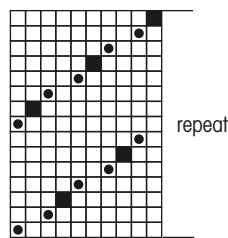


Small towels have been woven at the end of the warp. The wide fabric was cut to three pieces and it produced three small towels. The green fabric is weft-backed with a velvet yarn as an additional reverse side weft. The red fabric is just a regular satin, which can be woven in the same warp by omitting the additional weft.

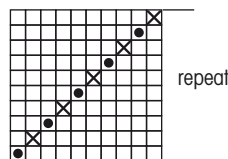
**RED REGULAR SATIN WASHCLOTHS**  
(no back weft)  
● = merc. cotton 8/2, cotton



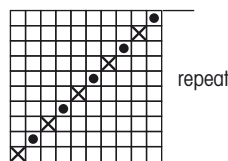
**GREEN VELVET FABRIC WASHCLOTHS**  
● = merc. cotton 8/2, dark green  
■ = velvet thread, green



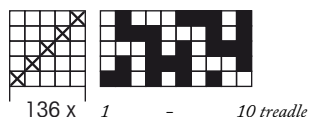
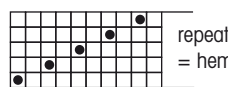
**GREEN TOWEL**  
X = cotton 8/2, green  
● = merc. cotton 8/2, dark green



**RAIDALLINEN PYYHE**  
X = cotton 8/2, red and stripes  
● = merc. cotton 8/2, red



The treadles 1, 3, 5, 7 and 9 are producing the face side structure. The treadles 2, 4, 6, 8 and 10 are producing the reverse side structure.



136 x 5 = 680 ends

## WEAVING INSTRUCTIONS

Weave 2,5 cm for hems with red mercerized cotton according to the treadling instructions.

Weave alternating red mercerized cotton and regular unmercerized cotton. The stripes are woven with regular cotton. The reverse side of the fabric will be solid-coloured and the face of the fabric striped.

*The striping of the face side:*

19,5 cm red

0,3 cm natural white (= 1 repeat)

0,3 cm red (= 1 repeat)

3 cm blue

approx. 1 cm yellow (= 3 repeats)

0,3 cm red (= 1 repeat)

6 cm green

0,3 cm natural white (= 1 repeat)

0,3 cm red (= 1 repeat)

0,3 cm blue (= 1 repeat)

n. 1 cm green (= 1 repeat)

0,3 cm blue (= 1 repeat)

0,3 cm red (= 1 repeat)

0,3 cm natural white (= 1 repeat)

6 cm green

0,3 cm red (= 1 repeat)

n. 1 cm yellow (= 1 repeat)

3 cm blue

0,3 cm red (= 1 repeat)

0,3 cm natural white (= 1 repeat)

Repeat from the beginning 3 times

19,5 cm red

The sett is 30 picks/cm (15 + 15).

Woven length is 161 cm + hems.

The size of the fabric off the loom is 78 x 154 cm + hems.

## FINISHING

Finish the edges with 3-step zigzag stitches. Sew the hems by hand. Sew a towel loop in the middle of the long side approximately 2 cm from the edge. The length of the handwoven rib weave loop was 18 cm. Fold the end 2 cm underneath and sew by hand to the fabric. The loop was woven on a loom, see page 31 for instructions.

## Green towel

Finished size 72 x 143 cm, washed

## AMOUNT OF WEFT YARN NEEDED

Eko Mercerised Cotton 8/2, tex 74x2,

1 kg = approx. 6 800 m, Garnhuset i Kinna

878 dark green 291 g

Cotton 8/2, tex 74x2, 1 kg = approx. 6 800 m,

Garnhuset i Kinna

8274 green 257 g



## WEAVING INSTRUCTIONS

Weave 2,5 cm hems with a dark green mercerized cotton according to the treadling instructions. Weave the towel alternating dark green mercerized cotton and regular green cotton.

The sett is 30 picks/cm (15 + 15).

The woven length is 155 cm + hems 2,5 cm each.

The size off the loom was 78 x 150 cm + the hems.

## FINISHING

Finish the edges with 3-step zigzag stitches. Sew the hems by hand. Sew a towel loop in the middle of the long side approximately 2 cm from the edge. The length of the handwoven rib weave loop is 18 cm. Fold the ends 2 cm underneath and sew by hand to the fabric. The loop was woven on a loom, see page 31 for weaving instructions.

## ***Green Velvet Washcloths***

Finished size after wash 24 x 19 cm, 3 pieces

## WEAVING INSTRUCTIONS

Weave 2,5 cm hems with a dark green mercerized cotton according to the treadling instructions. Weave the towel alternating two picks dark green mercerized cotton and one pick velvet yarn according to the treadling instructions. The velvet yarn will be on the reverse side and the cotton on the right side.

The sett is 14 picks of cotton and 7 picks of velvet/cm.

The woven length is 20 cm + the hems 2,5 cm each. Amount of weft yarn needed for one cloth: Merc. Cotton 8/2 51 g and Velvet yarn 62 g (1 kg = n. 1840 m).

## ***Red Washcloths***

Finished size after wash 24 x 19 cm, 3 pieces

## WEAVING INSTRUCTIONS

Weave with mercerized cotton according to the treadling instructions. The weave structure is a regular satin without any extra threads on the reverse side.

The sett is 20 picks/cm. The woven length is 20 cm + the hems 2,5 cm each. Amount of weft yarn needed: Mers. Cotton 8/2 66 g.

## FINISHING OF THE WASHCLOTHS

Finish the edges with 3-step zigzag stitches. Divide the width to three equal parts and sew zigzagstitches to the edges. The width of the pieces is 26 cm. Cut the pieces apart.

Sew the hems by hand.

*The pieces cut from the sides of the fabric:*

Sew the woven rib weave ribbon to the cut edge by hand. Cut the ribbon 30 cm long. Fold the ribbon lengthwise right sides together and sew the ends of the ribbon. Turn the right sides over. Attach the ribbon to the edge of the fabric with pins. ▶





Sew both edges of the ribbon at the same time with short stitches that go through every layer of fabric. The other end of the ribbon is sewn to a loop. Close the open edge of the loop by hand stitching.

*The piece cut from the middle of the fabric:*

Cut a 2,5 cm wide double-fold bias tape 30 cm long. The other end of the tape will be sewn to a loop. Sew the other side of the tape to the fabric by placing the fabric and the tape right sides together. Pin and sew. Turn the tape over the edge of the fabric and sew the other edge to the fabric by hand. Sew the open edge of the loop. Turn the tape to a loop and attach by sewing. Finish the other raw edge same way, but omit the loop. ●



## Tip

The weaving of the towels was slow because one centimetre had 30 picks. If the weaving feels like too time-consuming, you can weave the same warp with only one shuttle without the reverse side weft. In this way, the structure is an ordinary satin. You can also weave with a thicker yarn, like in Bunny's Tiny Towels on page 28. The weaving is quicker in that way. You can also weave less picks per centimetre, if you don't mind the warp showing. By the way, the striped fabric feels like it is progressing faster than the solid coloured one.







DESIGN OF PATTERN Marjatta Hirvi WEAVER Kirsi Vakkari

Finished size 38 x 38,5 cm, 2 pieces

## Bunny's Tiny Towels 3749

The warp Cotton 8/2 natural white,  
tex 74x2, 1 kg = 6 800 m  
Warp width 40 cm  
the sett 8 ends/cm  
number of warp ends 320  
length 2,8 m  
amount of yarn needed 127 g

Reed 40/2 (2 per dent in a 40-dent reed)  
Structure Weft-Backed 4-harness Satin

### PINK TOWEL

The sett is 5,3 + 5,3 picks/cm.

Weave 2,5 cm for the hem with a coloured weft thread.

Weave the towel alternating a coloured and an unbleached weft.

*Stripes* (+ unbleached every other pick)

Repeat

4 x pink (= approx. 2,6 cm)

5 x yellow (= approx. 3,2 cm)

1 x unbleached white (= approx. 0,8 cm)

5 x yellow

5 x pink

1 x unbleached white

5 x pink

5 x light blue

1 x unbleached white

5 x light blue

Keep on weaving with pink until the fabric is 41,5 cm, measured under tension. Weave 2,5 cm at the end for the hem.

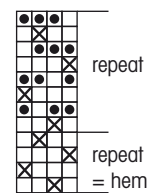
The size of the fabric is 38 cm x 38 cm off the loom + hems. ▶



### DRAFT FOR A TABLE LOOM

× = coloured weft  
● = unbleached weft

1 - 4 lever



80 x

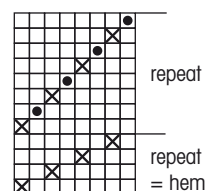
80 x 4 = 320 ends

### NB

These towels were woven in a small table loom, but you can weave them as well in a large floor loom.

### DRAFT FOR A FLOOR LOOM (countermarch)

× = coloured weft  
● = unbleached weft



80 x

1 - 8 treadle

80 x 4 = 320 ends



### FOR TABLE LOOMS

Weave 2,5 cm for the hem with a coloured weft thread. Repeat 4 times: raise the shaft 3, 1, 4, 2.

The fabric:

Raise the shaft 3: coloured weft

Raise the shaft 1, 3 and 4: unbleached weft

Raise the shaft 1: coloured weft

Raise the shaft 1, 2 and 4: unbleached weft

Raise the shaft 4: coloured weft

Raise the shaft 2, 3 and 4: unbleached weft

Raise the shaft 2: coloured weft

Raise the shaft 1, 2 and 3: unbleached weft

Repeat until the desired length.

See the weaving instructions on page 29.

### AMOUNT OF WEFT YARN NEEDED

Cotton Soft, 50 g = 120 m / 131 yds, 100 % Cotton, Novita:

(010) unbleached white 42 g, (504) pink 30 g, (203) yellow 6 g and (103) light blue 6 g.

### BLUE TOWEL

Weave like the Pink Towel, but swap the pink and blue areas.

### FINISHING

Sew 3-step zigzag in the ends of the fabrics and cut the pieces apart. Fold and iron the hem and sew by hand. Sew at the same time a loop inside the hem in one of the corners. A hanging loop and a flower was crocheted with the weft threads for the towels. The size of the finished hem is 1 cm. ●





# Rib Weave Ribbons

## 3750

### WEAVE A GROSGRAIN RIBBON ON A LOOM!

Dress the loom as usual for the ribbon and start weaving! Weaving a ribbon on a loom is quick and the beating with a reed produces a tight and even ribbon. The structure is warp-faced plain weave. The dense warp is covering the weft almost completely.



PLAIN WEAVE

### Green Rib Weave Ribbon

The warp Cotton 8/2 and Eko Mercerised Cotton 8/2 tex 74x2, 1 kg = n. 6 800 m

Warp width 2,5 cm  
sett 16 ends/cm  
number of warp ends 40  
length 2,35 m

Structure Plain weave  
Reed 80/2 (2 ends per dent in an 80-dent reed)

#### WINDING INSTRUCTIONS

Wind a green 8/2 cotton and dark green mercerized 8/2 cotton alternating.

#### AMOUNT OF YARN NEEDED FOR THE WARP

Length 2,35 m.  
Cotton 8/2, Garnhuset  
8274 green 7 g  
Eko Mers. Cotton 8/2,  
Garnhuset  
878 dark green 7 g

#### AMOUNT OF YARN NEEDED FOR THE WEFT

The woven length is 1,5 m.  
Cotton 16/2, tex 38x2,  
1 kg = 13 000 m  
green 5 g

### Red Rib Weave Ribbon

The warp Cotton 8/2 and Eko Mercerised Cotton 8/2 tex 74x2, 1 kg = n. 6 800 m

Warp width 2,5 cm  
sett 16 ends/cm  
number of warp ends 40  
length 2,35 m

Structure Plain weave  
Reed 80/2 (2 ends per dent in an 80-dent reed)

#### WINDING INSTRUCTIONS

6 threads red  
4" off white  
4" red  
4" green  
4" red  
4" green  
4" red  
4" off white  
6" red

#### AMOUNT OF YARN NEEDED FOR THE WARP

Length 2,35 m.  
Cotton 8/2  
red 2080 Bockens 8 g  
off white 4 g  
dark green 8274 Garnhuset 4 g

#### AMOUNT OF YARN NEEDED FOR THE WEFT

The woven length is 1,5 m.  
Cotton 8/2  
red 5 g

The grosgrain ribbons have been used for the loops and finishing of the Winter Swimming Towels. See page 27.









DESIGN OF PATTERN **Siiri Korhonen** WEAVER **Siiri Korhonen***Upholster – Decorate – Sew*

## Wave and Orchid - Multipurpose Fabric 3751

### COLOURS PERMITTED!

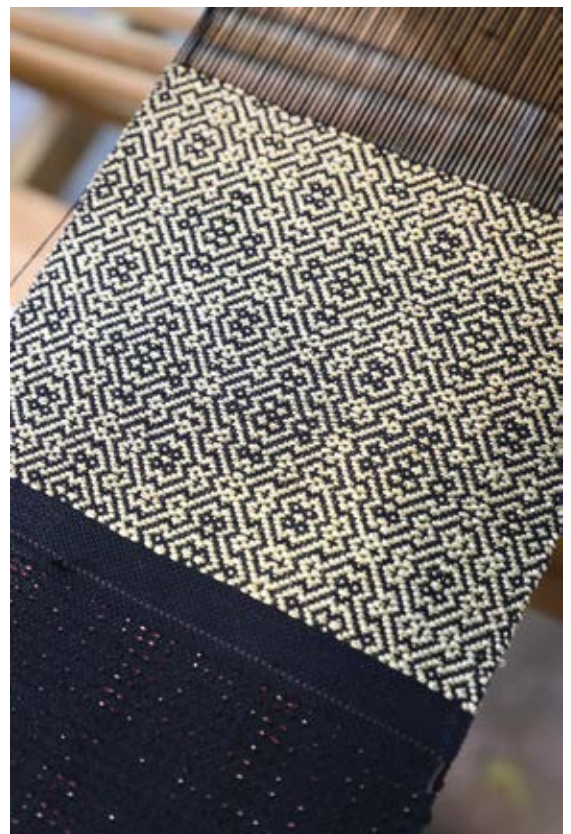
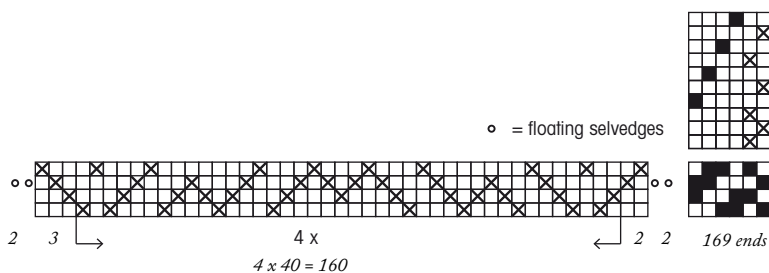
Dare to try colours you wouldn't normally use. Our fabric designs include irresistibly wonderful colour combinations that inspire you to start designing your fabric. How about the combination of pink and blue in the Orchid pattern in the Craft Project Bag or the combination of green and red in the Millipede pattern?

The dense and strong fabric can be used for upholstery, home decoration and sewing projects, like purses and wallets. The tabby weft thread is the same strength as the warp thread. Pattern weft needs to be approximately double strength compared to the tabby weft. You can also wind two thinner yarns together on a bobbin to make a correct strength pattern weft. Add a little glitter yarn to the pattern weft or weave a golden fabric, where half of the pattern weft is golden yarn. ▶

The warp Merssi 8/2 mercerized cotton, #3 Black  
tex 76x2, 1 kg = 6 500 m, 3224 yd/lb, Lankava  
width 21 cm / 8,45"  
Warp number of warp ends 165 + 4 additional ends for  
floating selvages = 169  
the sett is 8 ends per cm / 20 epi  
length 4,74 m / 5,18 yd

Reed 40/2 = 2 per dent in a 40-dent reed (metric) /  
10-dent reed (imperial)

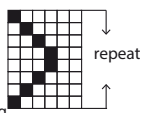
Structure Overshot



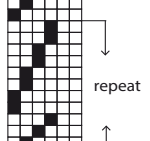


The sett of the weft is 16,5-17 picks/cm (tabby + pattern weft) and 10 picks/cm in the plain weave.

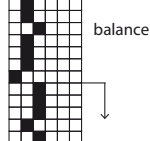
#### CHAINS

- = Merc. cotton 8/4 5319 red 4 g (pattern weft)
  - X = Line linen 16/2 1028 yellow green 3 g (tabby weft)
- 

#### WAVE

- = Merc. cotton 8/4 5308 turquoise 4 g (pattern weft)
  - X = Line linen 16/2 86 blue 4 g (tabby weft)
- 

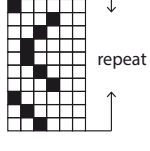
#### BUTTERFLY

- = Merc. cotton 8/4 5329 green 5 g (pattern weft)
  - X = Line linen 16/2 89 blue 3 g (tabby weft)
- 

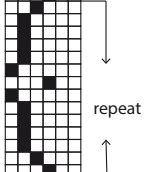
#### MARIGOLD

- = Merc. cotton 8/4 5054 pink 4 g (pattern weft)
  - X = Line linen 16/2 86 blue 4 g (tabby weft)
- 

#### MILLIPEDE

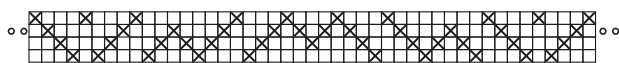
- = Merc. cotton 8/4 5323 green 4 g (pattern weft)
  - X = Line linen 16/2 43 red 4 g (tabby weft)
- 

#### ORCHID

- = Merc. cotton 8/4 5046 pink 4 g (pattern weft)
  - X = Line linen 16/2 88 blue 3 g (tabby weft)
- 

#### Threading

○ = floating selvedge



2 3 → 4 x ← 2 2  
4 x 40 = 160

Only the pattern picks are marked in the draft. Weave a tabby pick always after a pattern pick!



169 ends

## Six patterns

Colourful Craft Project Bag

Width 18 cm x height 22 cm

Weave 2 cm plain weave 10 picks/cm with the warp thread as a weft. Alternate with a tabby pick and a pattern pick. Sett is 16,5-17 picks/cm. The patterned section was 53,7 cm measured under tension:

- 8,5 cm Orchid 5 repeats
- 8,8 cm Millipede 6 repeats
- 9,5 cm Marigold 4 repeats
- 9 cm Butterfly 4 repeats
- 9,1 cm Wave 6 repeats
- 8,8 cm Chains 9 repeats

Weave 2 cm plain weave with the warp thread.

The patterned section was 19 cm wide x 52 cm long off the loom, and 18 cm + 49,5 cm after the wet-finish. Weave also 8 cm plain weave with the warp thread for the zipper tabs, 10 picks/cm.



**Instructions for Sewing:** Fold the piece in half right sides together. Attach a zipper to the edges wrong side up with pins and sew. Sew the side seams with simple stitches over the edges the way that there won't be any seam allowance left inside the bag (= butt seam). The edges of the fabric are facing each other. Pinch and sew the corners in the bottom of the bag to create depth. Turn the bag right side out. Sew the zipper tabs: Finish the small piece of plain weave fabric by sewing 3-step zigzag stitches to the edges and cut out a 9 cm x 8 cm sized piece. Fold the fabric and turn the raw edges inside of the piece. Sew the piece kind of a small pouch. Make two of these and attach them to the ends of the zipper by sewing.



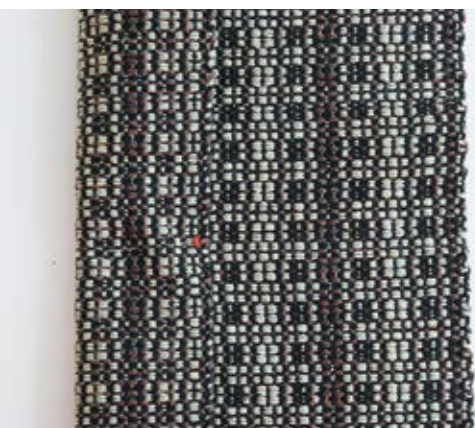


## Snakeskin

Purse - Width 15,5 cm x height 14 cm

The pattern weft has two different coloured 8/2 mercerized cotton yarns and one shimmering metallic yarn wound together on a bobbin. Weave 2 cm plain weave for the seam allowance with the warp thread as a weft. Weave the pattern for 31,5 cm (21 repeats). Weave 2 cm plain weave for the seam allowance at the end. The sett is 10 picks/cm in the plain weave, and 16,5 picks/cm in the patterned section (tabby weft + multiple pattern weft). The patterned section was 19 cm wide x 29,5 cm long off the loom and 18 cm x 28,2 cm after the wet-finishing.

**Instructions for sewing:** Fold the piece in half right sides together. Attach a zipper to the edges wrong side up with pins and sew. Sew the side seams. Pinch and sew the corners in the bottom of the bag to create depth. Turn the bag right side out and iron gently on low heat to prevent the shimmering yarn from melting. Attach the ends of the zipper inside the purse neatly by hand sewing.



Merc. Cotton 8/2 Garnhuset i Kinna, tex 76x2, 1 kg = approx 6 500 m.  
Metallic yarn 0,37 mm, minispool 4 g = 200 m, Venne Colcoton.

### SNAKESKIN

- = Merc. cotton 8/2  
827 grey +  
864 brown,  
4 g each  
+ metallic yarn  
1014 black 1 g.  
All three yarns wound  
together on a bobbin  
(dark pattern weft)
- = Merc. cotton 8/2  
868 grey +  
869 light green,  
6 g each  
+ metallic yarn  
1002 gold 1 g.  
All three yarns wound  
together on a bobbin  
(light pattern weft)
- × = Merc. cotton 8/2 black  
(tabby weft, warp thread)



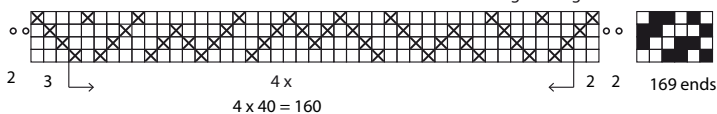
Cottolin 22/2, tex 80 x2, 1 kg = 6 400 m

### SMALL FISH

- = Cottolin 22/2  
doubled, Garnhuset  
2243 red 4 g  
(pattern weft)
- × = Cottolin 22/2  
2059 teal 4 g,  
Bockens  
(tabby weft)

### Threading

○ = floating selvages



## Small fish

Mini Pouch, 7 cm width x 9 cm length.

The pattern weft is doubled. Weave 2 cm plain weave with a tabby weft. The pattern is 8 cm (10 repeats). Weave 2 cm plain weave with the tabby weft at the end.

The sett is 10 picks/cm in the plain weave and 15,5 picks/cm in the patterned section (tabby weft + doubled pattern weft).

The patterned section was 19 cm wide x 7,5 cm long off the loom and 17,5 x 7,3 cm after wet-finishing.

**Instructions for sewing:** Fold the piece in half wrong sides together. Sew the side seams less than 1 cm from the edges. Turn the bag wrong side out and sew the side seams again 1 cm from the edges. The raw edges will remain inside a tiny pocket. Turn right side out and iron gently. Attach buttons on both sides of the pouch by hand sewing. Crochet a figure 8-shaped button loop from doubled tabby weft thread.

## Golden Fabric

Evening clutch - Width 18 cm x height 15,5 cm

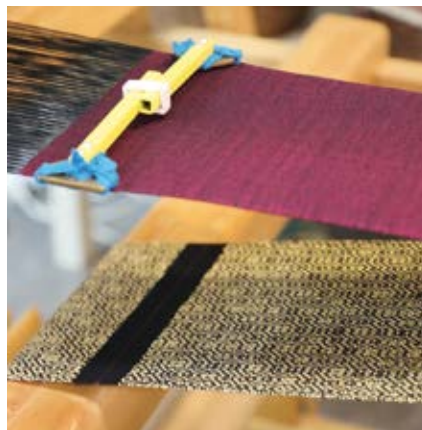


The pattern weft is a golden yarn and a yellow mercerized cotton wound together on a bobbin. Weave 1,5 cm plain weave with the warp thread as a weft for the seam allowance. Weave the pattern 21,8 cm (4 repeats). Weave 1,5 cm plain weave at the end with the warp thread. You need two equal-sized pieces for the outer fabric. Weave the second piece the same way as the first one. The sett is 10 picks/cm in the plain weave, and 15 picks/cm in the patterned area (tabby weft + doubled pattern weft). The patterned section was 18,5 cm wide x 20,5 cm long off the loom. The size was 17,8 cm x 19,4 cm after the wet-finish. Weave an additional 5 cm plain weave with the warp thread as a weft for the side strap tabs.

### Lining

You need two equal-sized pieces for the lining. Weave 25 cm plain weave for a piece, so 50 cm in total. Measure under tension. Ease the sewing by weaving one pick of different coloured weft between the pieces. The sett is 10 picks/cm. The size of the lining fabric was 18,5 cm x 49 cm off the loom, and 17,8 cm x 45,5 cm after the wet-finish.

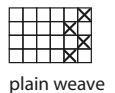
**Instructions for sewing:** 1. Set another fabric right side facing on a table. On top of it, place a zipper wrong side up along the edge (zipper closed). Place a lining fabric on top. Pin and attach the zipper by sewing. Move the zipper head when it's in the way. Don't sew too close to the teeth. 2. Sew the other side of the zipper: Set another outer fabric right side facing on the table. Place the previously sewn piece folded on top of it in the way that the right sides of the outer fabrics are together. Place the last lining piece on top of the pile. Pin the edge of the zipper and sew. 3. Side strap tabs: Sew 3-step zigzag stitches in the edges of two 5 cm x 5 cm pieces in the black plain weave fabric and cut apart. Fold and iron the pieces first in half and then the raw edges inside towards the centre. Topstitch over the long edges of the piece. 4. Set the outer fabrics and the lining fabrics facing each other (right sides together) and pin all of the sides. Fold the side strap tabs in half and place a D-ring in the middle. Place the folded side strap tabs on both sides between the outer fabrics close to the zipper. Open the zipper. 5. Sew around the piece, but leave a gap in the lining side seam for turning the piece. The side strap tabs get attached at the same time. Use the handwheel when sewing over the zipper. Trim the extra fabric of the side strap tabs if needed. 6. Turn the clutch and iron gently. Stitch the turning gap closed. Attach a metallic chain to the D-rings as a strap.



Mercerized cotton 8/2 Meressi, Lankava, tex 76x2,  
1 kg = n. 6 500 m = warp thread, for the plain weave.  
Novita Gold 80 % viscose 20 % polyester, 25 g = 95 m  
Merc. Cotton 8/2 Garnhuset i Kinna, tex 76x2,  
1 kg = approx. 6 500 m

### LINING

× = Merc. cotton 8/2  
806 wine red 14 g



### GOLDEN FABRIC

■ = Novita Gold  
golden yarn 17 g  
+ Merc. cotton 8/2  
816 yellow 11 g  
(pattern weft)

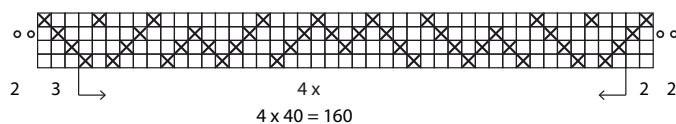
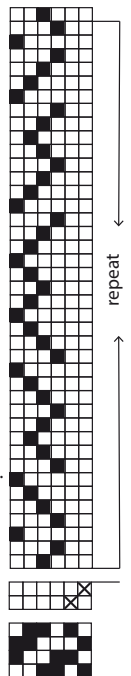
× = Merc. cotton 8/2  
black 12 g (warp thread)  
(tabby weft)

Weave also 5 cm plain weave with  
the warp thread for the strap tabs!

Only the pattern wefts are marked  
in the draft. Weave always a tabby  
pick (black 8/2) after a pattern pick.

### Threading

○ = floating selvages





# Tulip Fabric

Wallet - Width 16,5 cm x height 10 cm

Wind together a wine red cotton yarn and a wine red Venne Creafil sparkling yarn on a bobbin. Weave 2 cm plain weave for the hem with a black 8/2 mercerized cotton (warp thread), 35 cm pattern and 2 cm plain weave with the warp thread at the end. Measure the fabric under tension.

The sett is in the plain weave 10 picks/cm and 16 picks/cm in the patterned section (tabby weft + pattern weft). The patterned section was 19 cm wide x 34,5 cm long off the loom and 17,8 cm x 31 cm after the wet-finish.

## Lining and the strap of the wallet

Weave 48 cm according to the treadling instruction with two shuttles. The other weft is a black 8/2 mercerized cotton (warp thread) and the other one is Almina 8/4 cotton and Venne Creafil sparkling yarn wound together on a bobbin. Measure the length under tension. The sett of the weft is 9,5 picks/cm. The cloth was 19 cm wide x 46 cm long off the loom and 18,5 cm x 41 cm after wet-finishing. Weave an additional 15 cm for the strap of the wallet.

**Instructions for sewing:** 1. Sew 3-step zigzag stitches in the edges of the pieces and cut apart. Fold the hems of the outer fabric to the wrong side, iron and sew by hand. 2. Measure the middle point of the lining and the outer fabric and pin together. When you fold the ends of the piece, the outer fabric forms 5 cm and the lining 7 cm deep pockets. The single-fold hem of the lining was 3 cm. 3. Topstitch on the middle of the pockets to divide them into smaller pockets: On the other side topstitch through the patterned fabric and the single lining fabric only (2 narrow and 1 wide pocket). On the other side topstitch through the patterned fabric and two layers of lining fabric (4 narrow pockets). 4. Sew the side seams right sides together. Remember to leave a gap unsewn for turning the piece. Turn the piece right side up and sew the gap by hand. Steam or press the wallet. 5. The strap: You wove an additional 15 cm long piece of fabric for the strap. Sew 3-step zigzag stitches on both sides of the halfway line of the piece and cut apart lengthwise. You are left with two approximately 7,5 cm wide strips. Sew the strips from their ends to form a long "belt" for the wallet. Fold and iron the piece lengthwise first in half and then the raw edges inside towards the centre. Topstitch over the long edge of the piece. Cut the strap to the adequate length. The other end reaches the edge of the wallet and the other end exceeds the edge by 5,5 cm. Sew zigzag stitches at the end of the cut strap and fold the raw edge inside the piece and sew. Sew the strap to the wallet by hand. Sew the magnetic snaps to their correct places.

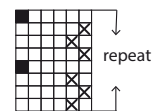


Yarns: Mercerized cotton Almina 8/4, 50 g = 169 m (1 kg = 3 380 m)  
 Venne Creafil Nm24, Minispool 90 m = 3 g (1 kg = 24 000 m), Venne Colcoton  
 Mercerized cotton 8/2 Meressi, Lankava, tex 76x2, 1 kg = n. 6 500 m = warp thread, for the plain weave.



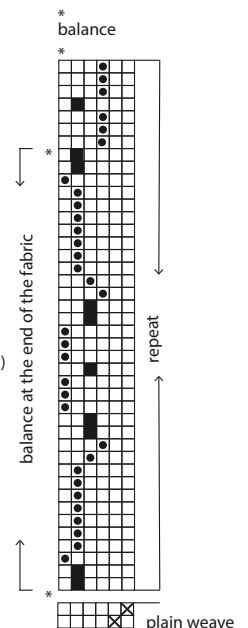
### LINING AND STRAP

- = Merc. cotton 8/4 9999 black 9 g + Creafil 10-9003 wine red 2 g wound together on a bobbin
- × = Merc. cotton 8/2 black 13 g (warp thread)



### TULIP FABRIC

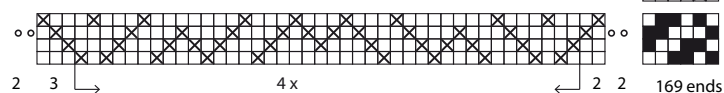
- = Merc. cotton 8/4 5199 wine red 14 g + Creafil 10-9003 wine red 3 g wound together on a bobbin (pattern weft)
- = Merc. cotton 8/4 9999 black 5 g (pattern weft)
- × = Cotton 8/2 black (tabby weft, warp thread)



Only the pattern wefts are marked in the draft. Weave always a tabby pick after a pattern pick black 8/2

### Threading

- = floating selvages



## REED CONVERSION

| Metric          | Imperial       |
|-----------------|----------------|
| Dents per 10 cm | Dents per Inch |
| 60              | 15             |
| 50-45           | 12             |
| 40              | 10             |
| 30              | 8              |
| 25              | 6              |
| 20              | 5              |

There are small inaccuracies in the conversions from metric unit reeds to imperial units reeds.

## UNITS

1 inch (") = 2,54 centimetres (cm)

1 yard (yd) = 0,914 metres (m)

1 ounce (oz) = 28,35 grams (g)

1 pound (lb) = 0,454 kilograms (kg)

1 cm = 0,394"

1 m = 1,094 yd

1 g = 0,035 oz

1 kg = 2,205 lb



## CHANGE THE COLOUR

Snowflake-runners have been woven on a black warp! With an easy change of colour you can create new look to the well-known patterns. The warp is cotton 16/2 and the weft is Nel 8 tow linen. The runners have been woven by Pirjo Vainonen in the Kymenlaakso Adult Education Center in Inkeroinen. The instructions for the Snowflake pattern can be found in the Mallikerta issue 2/2017 (in Finnish).



## Weaver's Library

### KANKAANRAKENTAJAN OPAS

This guide (in Finnish) for dressing a loom is a popular textbook on the practical work involved in weaving. The guide includes clear instructions for winding the warp, beaming and tying up the treadles, and tips for actual weaving. 52 pages. A basic guide to keep by your loom. Price €15.80



### KANKAANRAKENTAJAN SIDOSOPPI

This guidebook (in Finnish) on the theory of fabric structure includes the basics of fabric structure and the most common weave types for floor looms. 68 pages. Price €18.90



## EXPERIMENT

Sometimes the shafts are collapsing way too low when the locking pins are removed after the tie-up is finished. This happened to us when we were weaving the thin Whoosh Wrap on page 7. The warp was threaded on four shafts, but there were only two treadles tied because the structure was a plain weave. -We tied two treadles more. After removing the locking pin the shafts stayed higher. The loom was 150 cm wide. This tip isn't guaranteed because the looms, shafts and warps are different.

The height of the shafts can be changed by tightening the cords that run from the shafts to the jacks. The shafts are in the correct height in a countermarch loom when a warp thread goes in the middle of the eye of a heddle. This way the upper shaft sticks are usually at the same level as the top of the beater. Make sure in the tie-up that the distance from the lower shaft to the upper lamm, from the upper lamm to the lower lamm and from the lower lamm to the treadle is the same, measured from the long middle cord. Keep the locking pins inserted during the tying.





*In the next  
issue..*

The patterns in the black and white rug have been woven by using a clasped weft technique! It is easy and quick to make patterns with this technique, explore and experiment with it!

***The summer issue 2/2021  
is out in June***

***[www.theweaverspick.com](http://www.theweaverspick.com)  
[www.mallikerta.fi](http://www.mallikerta.fi)***

On our website, you can order single issues or subscribe to the full volume of the Weaver's Pick magazine, or order back issues from previous years. If you wish, you can also order the guidebooks (in Finnish).

Please make sure to let us know your new address. You can contact us by sending an email, via the website or by using the form.

#### **SUBSCRIPTION PRICES**

Full year 2021:  
Europe 2021 €45,80 /Four issues  
The rest of the world 2021 €51,60 /Four issues

**The full year subscription includes four issues.  
The invoicing period is a full year. A continuing subscription will automatically continue the following year. The digital form is included in the subscription.**

#### **SUBSCRIBER SERVICE**

Contact information: Mallikerta MH  
Vanhamaantie 3-5 A6, 47200 ELIMÄKI, FINLAND  
theweaverspick@mallikerta.fi  
www.mallikerta.fi  
Tel. +358 40 170 2007 (Mon-Fri 9:00-17:00)  
Publisher: Mallikerta MH

## ***The Weaver's Pick***

*A magazine full of ideas for weavers*

**Mallikerta**  
**The Weaver's Pick magazine**  
Vanhamaantie 3 - 5 A 6  
47200 ELIMÄKI FINLAND

Standard  
postage

I WOULD LIKE TO SUBSCRIBE TO  
the Weaver's Pick magazine

for myself  as a gift

**VOLUME 2021**  
(1-4/2021) subscription to Europe €45,80

**VOLUME 2021**  
(1-4/2021) subscription outside Europe €51.60

My new address as of \_\_\_/\_\_\_/2021

I wish to cancel my subscription at the end of the period I  
have paid for.

#### **SUBSCRIBER/NEW ADDRESS**

\_\_\_\_\_  
Name

\_\_\_\_\_  
Street address

\_\_\_\_\_  
Postal code and town/city

\_\_\_\_\_  
Telephone

\_\_\_\_\_  
Email

#### **RECIPIENT OF A GIFT SUBSCRIPTION/MY OLD ADDRESS**

\_\_\_\_\_  
Name

\_\_\_\_\_  
Street address

\_\_\_\_\_  
Postal code and town/city

\_\_\_\_\_  
Telephone

\_\_\_\_\_  
Email





## *The Weaver's Pick*

*A magazine full of ideas  
for weavers*



### *Follow us on sosial media!*



[instagram/mallikerta](https://www.instagram.com/mallikerta)



[facebook.com/mallikerta](https://www.facebook.com/mallikerta)



[pinterest.com/mallikerta](https://www.pinterest.com/mallikerta)

[www.mallikerta.fi](http://www.mallikerta.fi)  
[www.theweaverspick.com](http://www.theweaverspick.com)

#### WOOL AND LINEN SCARF

The plain weave structure has been woven extremely loose and finished by soaking and gently felting. The soft scarf can be used in all seasons.