

Price €9.40 incl. VAT

mallikerta

The Weaver's Pick

A magazine full of ideas for weavers

SUMMER 2 | 2020

LEARN A NEW TECHNIQUE

*Weft looped
weave*

16

FOR A CHANGE!

*Replace cords
from the
tie-up and get a
new look*

10



The Weaver's Pick

A magazine full of ideas for weavers

In this issue

**Weave strawberry
red towels and a table
runner for the summer**

10

Shaped fringes

”

*Tie a couple of fringe rows on a
transparent background and cut
them in different shapes”*

4

**Choose your favorite
colours from poppana
and weave a tapestry**

”

*Learn an easy and fun Weft looped
weave. You get quickly a pearl-like
surface on the weave with thick
yarns”*

36

**Pulled loops are
like pearls on the
fabric**

16

SUMMER
2/2020

WALL HANGINGS

- SHAPED FRINGES** 4
A transparent weave with shaped fringes
- AT THE END OF THE WARP** 36
A tapestry woven with poppana bias

TOWELS AND TABLE RUNNERS

- CRYSTAL STAR** 10
Small hand towels
- STRAWBERRY STAR** 14
A summerish table runner

HOME DÉCOR TEXTILES

- PICKED PEARLS** 16
Small rugs and pillows
- DOT LINE** 22
A sofa coverlet rug
- WELCOME SUMMER!** 24
Linen table runner and pillows
- POWDER RUG** 30
A checkered cotton rug
- SUMMER CHECKS** 32
A checkered rag rug

ADDITIONAL

- SUMMER CURTAIN, KNITTED** 24
- LINEN POT TRIO, CROCHETED** 27
- ADD TABBY SHAFTS FOR THE SELVAGES** 29

EDITOR-IN-CHIEF Marjatta Hirvi
LAYOUT Marjatta Hirvi
PATTERN EDITING Marjatta Hirvi, Kirsi Reilin, Kirsi Vakkari
PUBLISHER Mallikerta MH

CONTACT INFORMATION Mallikerta MH
Vanhamaantie 3-5 A6, 47200 ELIMÄKI,
FINLAND
toimitus@mallikerta.fi

CUSTOMER SERVICE www.mallikerta.fi
Tel. +358 40 170 2007

PRINTING HOUSE Painotalo Plus Digital

The Weaver's Pick magazine is published four times a year. Past issues are available from the publisher. The magazine accepts no responsibility for any typographical errors or other inaccuracies in the content that may cause our readers inconvenience, loss of working time or financial damage. The commercial use of the weaving patterns and the sharing of designs online is forbidden.

39th volume 2020
ISSN 0782-1530



Lockdown weaving

This spring was revolutionized by coronavirus. The lockdown restrictions forced us to settle down and rearranged our everyday schedules. Now there was time to concentrate on hobbies, the ones left behind and the new ones. Wasn't there a weaving loom at the upper story... They have been there for a long time waiting for a weaver on the bench and a warp on the beam! The looms are brought indoors and assembled for the first time in years.

Some have started the weaving hobby alone only with guides and some advice from social media. This is great, as while weaving we reminisce previous weavers and traditional weaves, and first of all, we design new patterns. In those warps on our looms the precious knowledge and skill of weaving stays alive.

Not only a big floor loom, but small rigid heddle looms have been the first looms for many to get acquainted with hand weaving. A little loom is suitable for a small amount of yarn and effect yarns. Spinners and dyers have found the rigid heddle looms and weaved many fine and unique scarves and cloths on those. Weavers who love patterns and stiff colorful rag rugs wind still long warps on the floor looms.

Whether you are weaving with a little loom or a big floor loom, weaving carries you away. Patterns in this magazine are woven with the floor looms, but many of them are suitable also for small looms. The light transparent weaves in this issue are easy and fast to weave. The weave is only tabby and the idea is to knot just a few fringe rows and shape them with scissors. You can bring the idea easily on a small loom. Choose the materials and colors you like the most and weave a summerish wall hanging or a window decor.

While weaving the restrictions fade away. Weave a lot and enjoy of summer. *Marjatta*



PATTERN DESIGN Marjatta Hirvi WEAVERS Kirsi Vakkari and Kirsi Reilin

Finished size 45 x 41 cm, 3 pcs.

Shaped fringes in a transparent weave

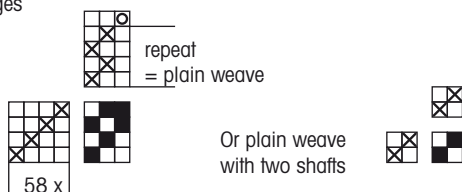
3717

The warp Line linen yarn 8/1, half bleached, Nel 8, tex 206, 1 kg = approx. 5 120 m
Warp width 46,4 cm
 density 5 threads/cm
 number of warp ends 232
 length 3,8 m

Reed 50/1
Weave Plain weave, fringes

Treadling

× = background weft
 ○ = fringes



WEAVING INSTRUCTIONS

Gather thin wool and linen yarns for the fringes. Choose yarns with beautiful surface and structure. There are two thin linen yarn and two wool or silkwool yarn in one fringe. Choose yarn colors that blend well together.

Make a fringe with a rya knot around two adjacent warp ends. Leave two warp ends between the fringes.

Cut threads to the length of 40 cm for the fringes. The length of the knotted fringe is approx. 19 cm. Weave the background with the same yarn as in the warp. ▶



WEAVE AND CUT

One shaped form needs only one row of knots. Fringes are cut into a wanted shape while finishing the weave.

Light and see-through fringes form new shapes when overlapping. Use the same shapes in one cloth to achieve a clear and calm end result.



Fringes are knotted with thin wool and linen threads. Wool yarns are hand dyed. Weaving is fun and the result is unique when you use your favourite colors and materials!





The lower part of the weave is unbleached and the upper is white in the yellow and the green work, but the red one is woven only with the unbleached background weft. The density of the background weft is 5 threads/cm, it is same as in the warp.

Beam of light – Yellow

Background weft

Tow Linen or Line linen 8/1, Nel 8, tex 206,
1 kg = approx. 5 120 m
unbleached 23 g
half bleached 13 g

Yellow fringes

Line linen 16/1, yellow 5 g
Tow Linen 6/1, gold 9 g
Thin wool yarn, yellow 7 g
Silkwool yarn, greenish brown 4 g = 25 g in total

White fringes

Line linen 12/1, half bleached 3 g
Line linen 8/1, ¼-bleached 5 g
Thin 1-ply wool yarn, natural white 5 g
Silkwool yarn, white 3 g = 16 g in total

The Birds – Red

Background weft

Tow Linen or Line linen 8/1, Nel 8, unbleached 35 g

Red fringes

Line linen 16/1 dark reddish brown, Tow linen 6/1 gold,
Wool yarn red, Silkwool yarn light beige
Approx. 20 g in total

Light red fringes in the middle

Tow Linen 6/1 gold, Cottolin 22/2 pale red, Wool yarn
pale red, Silkwool light beige
Approx. 5 g in total

White fringes

Line linen 12/1 half bleached, Line linen 8/1 ¼-bleached,
Wool yarn white, Silkwool yarn natural white
Approx. 5 g in total

Arcs – Green

Background weft

Tow linen or Line linen 8/1 unbleached 19 g and half
bleached 17 g

Green fringes

Tow linen 6/1 unbleached, Linen 16/2 bright green, Wool
yarn forest green, Silkwool yarn beige
Approx. 10 g in total

White fringes

Linen 12/1, ½-bleached, Linen 8/1 ¼-bleached, thin 1-ply
Wool yarn natural white, Silkwool yarn white
Approx. 10 g in total ▶



FINISHING

Sew the ends with 3-step zigzag stitches. Press the cloth. Measure the right place for the borders, fold and iron. Sew the borders by hand using white linen thread. Alternate with one short stitch (pick up one warp thread) to the cloth and one long stitch to the edge of the border. Leave the border ends open.

Cut the fringes according to the instructions on pages 8 - 9. Hang the weaves with one long rod in the same level or on different heights. Add a rod also in the bottom border.



Make a rya knot around two adjacent warp threads. Leave two warp threads between the knots. You can tie an extra treadle for picking or you can work on a closed shed.



Yarns used in the fringes are hand dyed. Yellows are dyed with tansy and goldenrod, light brown with birch bark and red with bloodred webcaps. Green color is from a velvet-footed pax.





CUTTING THE FRINGES

Place a cardboard under the fringe for cover. Straighten the threads with fingers or a comb. Cut a second cardboard into a shape you want to the fringe. Place the cardboard on the fringe and cut along the edge. Press while cutting to keep threads in order. Use sharp scissors!

Remove cardboards, straighten the fringes and trim the edge.

Straight lines are easy to cut with a ruler. ●

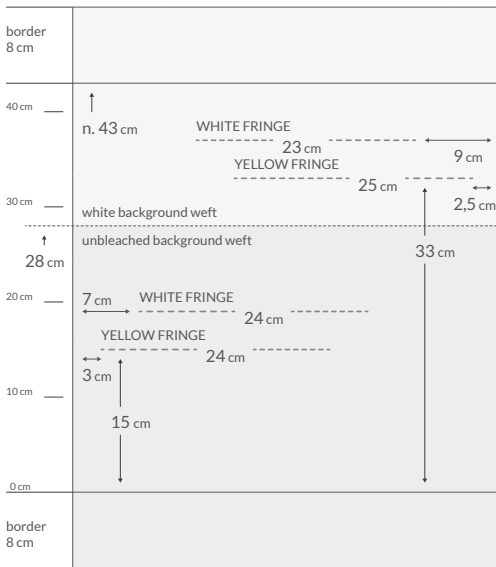
1. Beam - light - yellow. Cut the lowest yellow fringe diagonally to the right and the white fringe diagonally to the left. Cut upper fringes in an opposite manner. Use a ruler for cutting.



2. Arcs - green. Cut the same curved line to the cardboard edge you want to fringe. Place a cardboard on the green fringe and cut along the cardboard edge. Turn the cardboard around and place on the white fringe, cut along the cardboard edge.

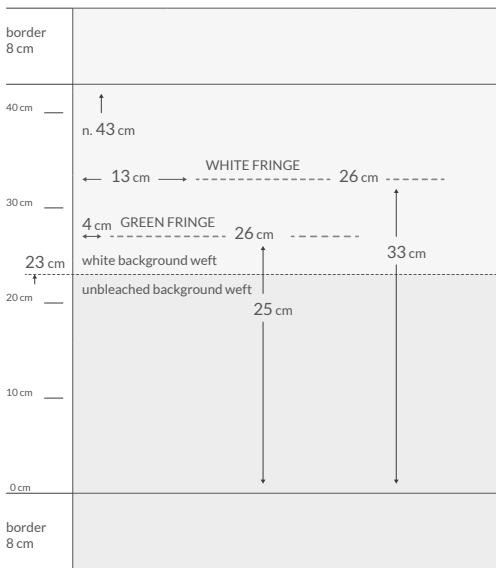


3. The Birds - red. Cut the same curved line to the cardboard edge you want to fringes. Move light red threads in the middle up and place the cardboard on the right side of the fringe. Cut. Turn the cardboard around and place on the left side of the fringe. Cut. Turn the light red threads down and even out. Cut the white fringe in the same way (except there is no light red in the middle). Cut a narrower arc for the upper red fringe and cut in the same way as the lower bigger red fringe.



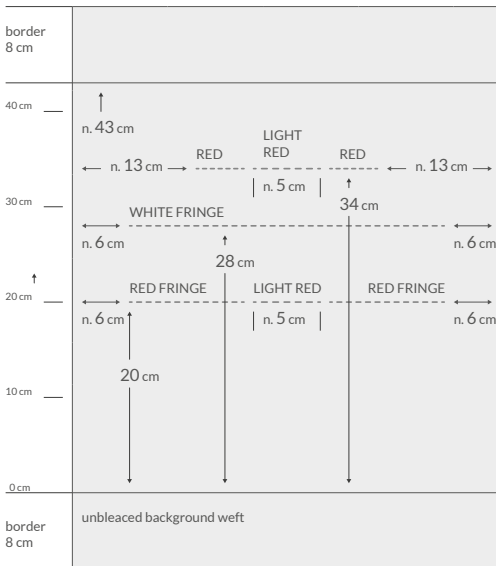
Beam of light – Yellow

Weave 8 cm for the border and 15 cm for the background using unbleached linen yarn. Knot the yellow fringe row. Weave 4 cm for the background and knot the white fringe row. See the picture on the left. Weave the background until the weave is 28 cm long (+ border 8 cm). Change the background weft color to white. Weave the upper fringes and the rest of the work by following the picture on the left.



Arcs – Green

Weave the lower part with unbleached yarn and the upper part with white linen yarn. Knot the fringes according to the picture on the left.



The Birds – Red

Weave the background with unbleached linen yarn. Knot the fringes according to the picture on the left.





PATTERN DESIGN Marjatta Hirvi WEAVER Kirsi Reilin

*Hand Towels**Finished size 40 x 45 cm**Strawberry Star table runner**page 15*

Crystal Star 3718

The warp 22/2 Bomull Lin (= Cottolin), tex 76x2,
1 kg = approx. 6400 m, Garnhuset i Kinna
Warp width 44 cm
density 10 threads/cm
amount of warp ends 440
length 5,8 m

Reed 50/2
Weave Crepe weave (Crystal crepe in Finnish),
color-and-weave effect

INSTRUCTIONS FOR WINDING THE WARP

40 threads bleached white

8" dark red

96" bleached

8" pink

8" bleached

8" pink

8" bleached

8" red

8" bleached

8" red

8" bleached

8" dark red

8" bleached = *the middle*

Wind the other edge of the warp as a mirror image.

AMOUNT OF WARP YARN NEEDED, length 5,8 m

22/2 Bomull Lin (= Cottolin), tex 76x2, 1 kg = 6400 m

bleached white 295 g

2240 dark red 29 g

2210 pink 29 g

2242 red 29 g

382 g in total ▶

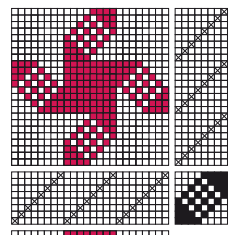
A NEW PATTERN WITH SMALL CHANGES IN THE TIE-UP

Weaves with straightforward threading are easy to change with a tie-up. We decided to change some cords in the tie-up while weaving. We had three different patterns in this same warp.

TIE-UP 1

Star

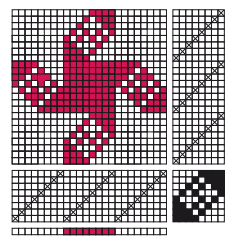
Threading and treadling:
□ = white thread
■ = red thread



TIE-UP 2

Lace

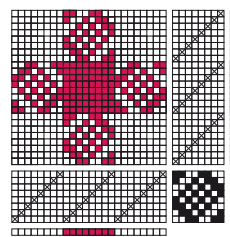
Threading and treadling:
□ = white thread
■ = red thread



TIE-UP 3

Firecracker

Threading and treadling:
□ = white thread
■ = red thread





Tie-up 1 Star.



Tie-up 2 Lace and 3 Firecracker.

WEAVING INSTRUCTIONS

We wove six towels and one table runner in this same warp. Towels are woven with three different tie-ups, two towels with each one. The woven length of one towel is 56 cm. The density of the weave is 9 – 10 threads/cm. Towels have the same color order as in the warp. The colors are same in all towels, only the order of the colors has been changed.

TIE-UP 1 - STAR -

Symmetric and balanced weave.

White Hand Towel

The woven length with the borders is 56 cm.

Weave the border with white yarn (3 repeats)

approx. 4 cm white
 dark red stripe (1 repeat)
 approx. 10 cm white
 pink stripe
 white stripe
 pink stripe
 white stripe
 red stripe
 white stripe
 red stripe
 white stripe
 dark red stripe

White stripe = *the middle*

Weave the other end of the towel as a mirror image.

*Colors are same
 in all towels,
 only the places
 in the stripes
 has been
 switched*

AMOUNT OF WEFT YARN NEEDED for 1 hand towel

22/2 Bomull Lin (= Cottolin), tex 76x2,
 1 kg = approx. 6400 m, Garnhuset i Kinna
 bleached white 28 g
 2240 dark red 3 g
 2210 pink 3 g
 2242 red 3 g
 37 g in total

Red Hand Towel

Weave in the same way as the white towel but switch the places of bleached white and dark red 2240.

The Strawberry Stars table runner on the page 14 is woven with this tie-up 1.

TIE-UP 2 - LACE -

Note that there are dense and sparse sections in this weave. Use a gentle beat for the sparse weft rows and firm for the dense rows. In this way you get an even density.

White Hand Towel

Weave in the same way as the white towel, Tie-up 1 - Star - *Pink Hand Towel*

Weave in the same way as the white towel but switch the places of bleached white and pink 2210.

TIE-UP 3 - FIRECRACKER-

Even surface and interesting pattern.

White Hand Towel

Weave in the same way as the white towel, Tie-up 1 - Star - *Red Hand Towel*

Weave in the same way as the white towel but switch the places of bleached white and red 2242.

FINISHING

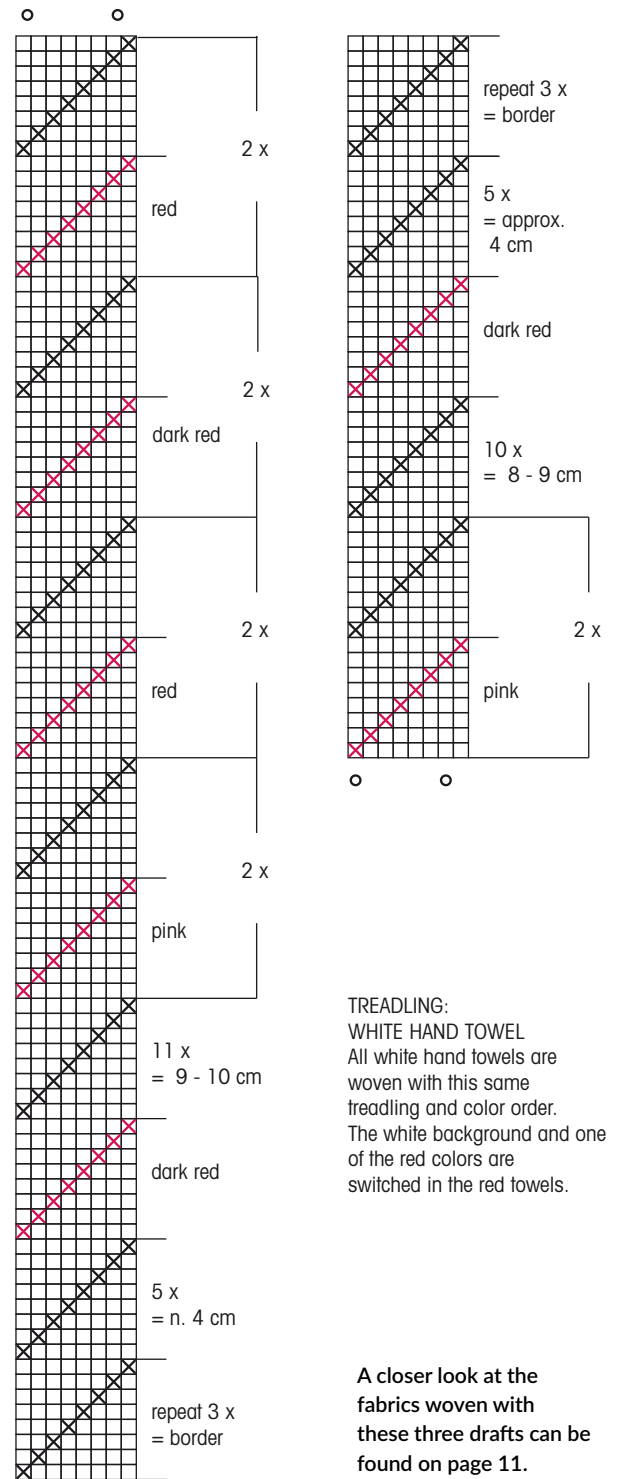
Finish the towels by sewing 3-step zigzag stitches on the ends, then you can cut the pieces apart. Press using a pressing cloth. Turn the edges under twice and sew by hand. The finished border can be one or two repeat units high. With the borders you can adjust the length of the towels. Sew the hanging loops either to the centre of the border or to the corner of the towel. If you fasten the loop to the centre, turn the cord band upwards after sewing and sew again also on the border. In this way the towel drapes nicely. ▶

TOWEL HANGING LOOPS

We made cord with a Cord Disk 8 for the hanging loops. In the cord there are 7 threads: 6 threads in same color and 1 different color. Bind the threads with an overhand knot and press in the notches. One notch stays empty. Pass a thread over two threads in an empty notch. Continue passing threads in the same way. The finished length of one cord is 13 cm. End with an overhand knot. Use the same yarns as in the woven fabric.

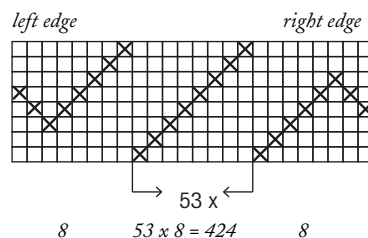


The middle of the hand towel



TREADLING:
WHITE HAND TOWEL
 All white hand towels are woven with this same treadling and color order. The white background and one of the red colors are switched in the red towels.

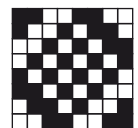
A closer look at the fabrics woven with these three drafts can be found on page 11.



STAR



LACE



FIRECRACKER





PATTERN DESIGN **Marjatta Hirvi** WEAVER **Kirsi Reilin**

A Table runner
 Finished size 40 x 136 cm

Strawberry Star 3719

The warp 22/2 Bomull Lin (= Cottolin), tex 76x2,
 1 kg = approx. 6400 m, Garnhuset i Kinna
 Warp width 44 cm
 density 10 threads/cm
 amount of warp ends 440
 length 5,8 m

Reed 50/2
 Weave Crepe weave (Crystal crepe in Finnish)
 color-and-weave effect

Woven in the same warp as Crystal Star hand towels.
 Instructions for winding the warp and amount of warp
 yarn needed are on the page 11.



WEAVING INSTRUCTIONS

Weave the runner according to the treadling instructions using bleached white and dark red cottolin 22/2. The density of the weave is approx. 10 threads/cm.

Stripes

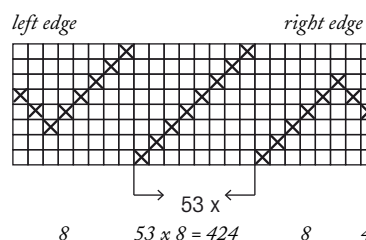
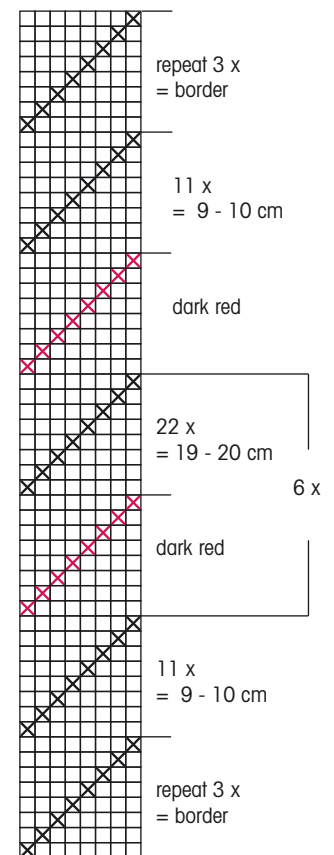
Border bleached white (3 repeats)
 approx. 10 cm bleached white
 dark red stripe
 approx. 20 cm bleached white } repeat 6 x
 dark red stripe
 approx. 10 cm bleached white
 border bleached white (3 kuviota)
 155 cm in total

AMOUNT OF WARP YARN NEEDED

22/2 Bomull Lin (= Cottolin), tex 76x2, 1 kg = 6400 m,
 bleached white 90 g
 2240 dark red 5 g

FINISHING

Sew 3-step zigzag stitches on the ends and then cut the pieces
 apart. Press the cloth. Sew the borders by hand, the width of the
 finished border is two repeat units in treadling. ●



8 53 x 8 = 424 8 440 threads in total



PATTERN DESIGN **Marjatta Hirvi** WEAVER **Kirsi Vakkari**

Pillows

Finished size 50 x 50 cm and 50 x 40 cm

Small rugs

Finished size 50 x 74 cm and 50 x 68 cm

Picked Pearls 3720

The warp **Minimop Cotton Twine, natural white**
 1 kg = approx. 700 m, Ø 2,5 mm, 80 % recycled cotton, 20 % polyester, Lankava

Warp
 width 60 cm
 density 3 threads/cm
 amount of warp ends 181
 length 4,8 m
 amount of yarn needed 1,27 kg

Pirta 30/1
Sidos Weft looped weave, tabby



The warp for these home décor fabrics is wound from heavy cotton twine and the background weft is the same yarn. Wind the warp wide enough as the weave shrinks a lot. You can wash the yarn before weaving to prevent the shrinkage. Our small rugs endured a machine wash and spin well. We recommend machine spin (about 1200 rpm) for this thick and heavy fabric, otherwise it dries too slowly. Observe the materials you have used and the structure of the fabric and wash by hand if necessary.

Picking technique is easy! ▶

PILLOWS

Treading:
 X = background weft, Mop cotton twine (same as the warp)
 o = pattern weft, looping thread Lilli Tube yarn (heavier than the background weft)

18 x 10 = 180 181 threads in total



Pillows

WEAVING INSTRUCTIONS

Start and finish by weaving a 3 cm seam allowance using natural white Minimop cotton twine, plain weave. Weave the pillow fabric using the Minimop cotton twine as background weft and Lilli tube yarn as looping thread. Weave white pillow fabric with natural white background and looping weft and yellow with the Lion Yellow wefts. Shoot two background wefts between each looped weft. Pull the loops according to the plan on the left. Use a rod to pick up the loops, see instructions on the next page.

The density of the weave is approx. 1 Lilli Tube Yarn + 2 Minimop Cotton Twine/1 cm. The woven length is 90 cm + seam allowance á 3 cm = 96 cm. The woven length is 80 cm + seam allowance á 3 cm = 86 cm.

The circumference of the rod is 0,8 cm.

FINISHING

Sew 3-step zigzag on the ends. Press using a damp pressing cloth from the reverse side. You can also wash the fabric, see instructions for Finishing Small Rugs on page 20. Fold the fabric with right sides facing each other and sew the edges by hand using 6-ply cotton twine. Use a tapestry needle. Leave the seam allowance as narrow as possible. Do not punch the threads but take the whole thread on the needle. Turn the pillow right side out, insert the pad and stitch the opening to close. Use a needle to pick up the warp threads alternately from both sides. Stay on the same weft rows and you get an even plain weave surface.

WHITE PILLOW

Finished size 50 x 40 cm

Amount of weft yarn needed

Minimop Cotton Twine, 1 kg = approx. 700 m, Ø 2,5 mm, 80 % recycled cotton, 20 % polyester, Lankava

52 natural white 170 g

Lilli Tube Yarn, 1 kg = approx. 220 m, recycled cotton, 20 % polyester, Lankava

2 natural white 305 g

YELLOW PILLOW

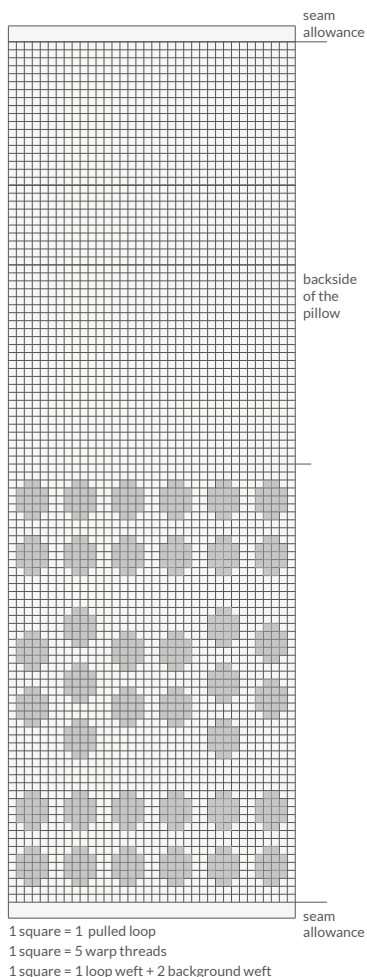
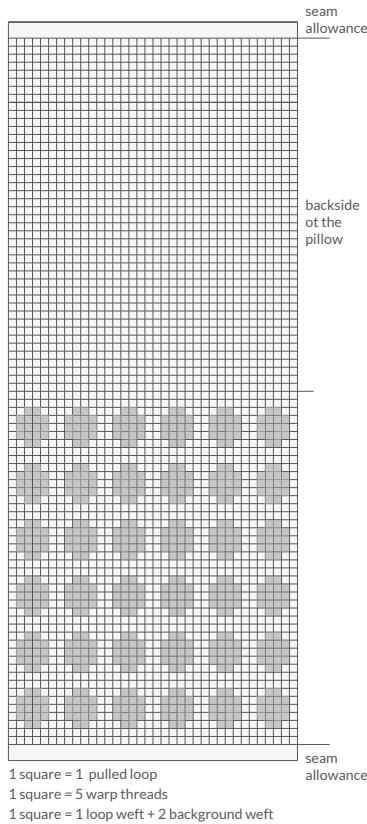
Finished size 50 x 50 cm

Amount of weft yarn needed

Minimop Cotton Twine, 1 kg = approx. 700 m, Ø 2,5 mm, 80 % recycled cotton, 20 % polyester, Lankava

71 Lion Yellow 200 g

Lilli Tube Yarn, 1 kg = 220 m, recycled cotton, 20 % polyester, 21 Lion Yellow 360 g ▶



Pull the loops according to the plans on the left. One marked square is one loop on the rod. One square is five warp threads wide, three rising and two descending threads. Press the pattern treadle and count the gaps where warp threads are descending; there are as many gaps as squares in a plan in width.



WEAVING TIPS FOR LOOPING

- > Keep the warp tension tight.
- > Beat firmly. Background wefts secure the loops.
- > Wind every loop into the same tension on the rod.
- > Do not twist the looping weft and background weft on the edges. The looping weft doesn't go around the two outmost warp ends. At the beginning start the looping weft by turning the tail back in the shed around the third warp thread from the edge.
- > Overlap the old and new looping weft for 10 cm, leave about 5 cm tails to the reverse side. Place the new weft on the old weft when overlapping. When finishing, fasten the tail with few stitches to the weft below and cut the tails. You can leave the tails to the pillow fabrics. It is also possible to draw weft ends through each other with a crochet hook when using tube yarn. Make sure that the joint is durable and secure it with stitches.

Close the opening of the pillow cases with stitches not invisible on the outside. Take a warp thread alternately from both sides on the needle and the result is like plain weave. Nb. Sew the ends carefully with 3-step zigzag before closing stitches. Otherwise the stitches might pull the warp threads out from the fabric.



Cut the wooden rod to the wanted length and carve a sharp point on the other end. Sand the end until it is smooth. You need at least 2 rods and they must be wider than the warp. 0,8 - 1 cm circumference is suitable for these heavy weaves.



Picking up loops

1. Shuttle in two background wefts.
2. Shuttle in the heavier looping weft. Hold the shed open and start to pull up loops starting from the same side you shuttled the weft in. There are three rising and two descending warp threads in the shed. Pick up the loops on the rod between the rising warp threads according to the plan. Do not draw out the rod yet!
3. Shuttle in two background wefts.
4. Shuttle in the looping weft and pull the loops on the rod starting from the same side you shuttled the weft in. Wind the loop on the rod to the same angle as on the previous row.
5. Shuttle in two background wefts.
6. Draw out the earlier rod and continue weaving. Keep the rods in the weave as long as possible to avoid loops loosening. >





Sew the border using 6-ply cotton twine. Take the whole thread on the needle alternately from the side of the rug and the side of the border.

Small rugs

Weave 8 cm for the border using natural white Minimop cotton twine. The plain weave border is wider than the rug. Alternatively you can leave fringes or weave just about 3 cm for the border and then fold it completely on the reverse side.

Weave the rug using the natural white Minimop cotton twine as a background weft and heavier Lilli tube yarn as a pattern weft. Keep the warp tension tight. Density of the weave is approx. 1 Lilli tube yarn + 2 Minimop cotton twine/1 cm. See weaving tips on page 19.

FINISHING

Sew 3-step zigzag on the ends. Fasten the pattern weft tails on the reverse side with a few stitches to the weft below before cutting. Press the rug through a damp cloth on the reverse side (or steam). Sew the borders by hand using 6-ply cotton twine. Do not pierce the threads but take the whole thread on the needle. Machine-wash 40°C and spin about 1200 rpm, or wash according to the materials you used and observe the structure of the fabric. Dry flat in an airy and warm place, the fabric dries slowly.

SMALL RUG BALLOONS

Finished size 50 x 74 cm, washed

The woven length in loom is 80 cm + borders á 8 cm = 96 cm. The length when taken off the loom is 72 cm + borders á 7 cm = 86 cm. The circumference of the rod was 1 cm.

Amount of weft yarn needed

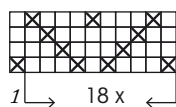
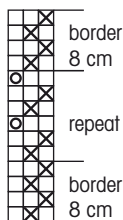
Minimop Cotton Twine, 1 kg = approx. 700 m, Ø 2,5 mm,
80 % recycled cotton, 20 % polyester, Lankava
52 natural white 191 g
Lilli Tube Yarn, 1 kg = approx. 220 m, recycled cotton,
20 % polyester
12 coral red 57 g
18 light blue 118 g
21 lion yellow 55 g
22 smoky blue 48 g
8 orange 57 g

SMALL RUGS

Treading:

× = background weft,
Mop cotton twine
(same as the warp)

○ = pattern weft, *looping thread*
Lilli Tube yarn
(heavier than the background weft)



181 ends in total

SMALL RUG DIAMONDS

Finished size 50 x 68 cm, washed

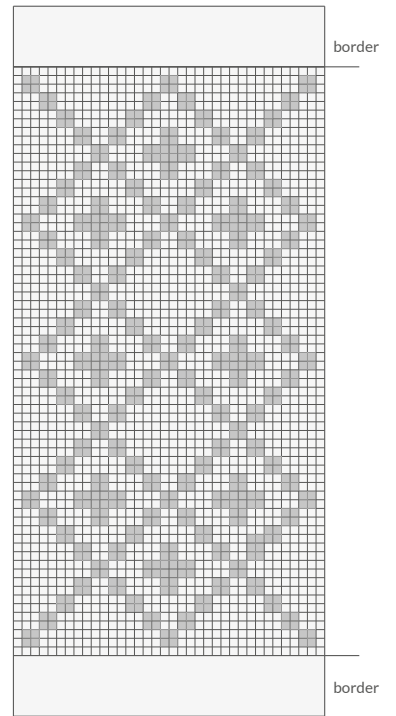
The woven length in loom is 73 cm + borders á 8 cm = 89 cm. The length when taken off the loom 66 cm + borders á 7 cm = 80 cm. The circumference of the rod was 0,8 cm.

Amount of weft yarn needed

Minimop Cotton Twine, 1 kg = approx. 700 m, Ø 2,5 mm,
80 % recycled cotton, 20 % polyester, Lankava
52 natural white 170 g
Lilli Tube Yarn, 1 kg = 220 m, recycled cotton, 20 % polyester
20 black 245 g



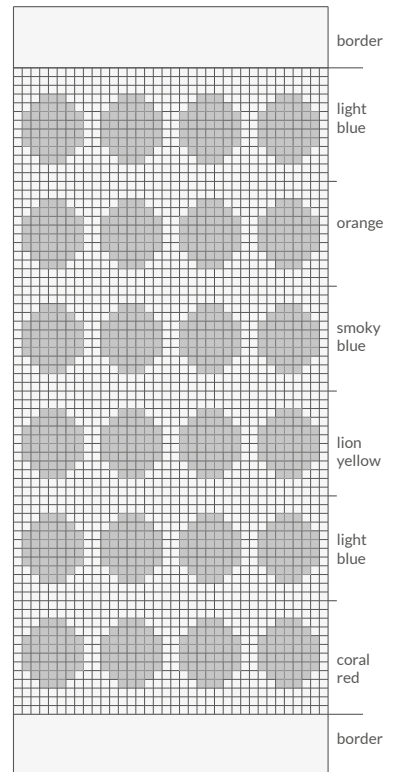
SMALL RUG
DIAMONDS



1 square = 1 pulled loop
 1 square = 5 warp thread
 1 square = 1 pattern weft + 2 background weft



SMALL RUG
BALLOONS



1 square = 1 pulled loop
 1 square = 5 warp thread
 1 square = 1 pattern weft + 2 background weft



PATTERN DESIGN **Marjatta Hirvi** WEAVER **Kirsi Reilin**

Sofa coverlet rug

Finished size 50 x 180 cm

Dot line 3721

The warp **Minimop Cotton Twine**, natural white
1 kg = approx. 700 m, Ø 2,5 mm,
80 % recycled cotton 20 % polyester

Warp width 60 cm
density 3 threads/cm
amount of warp ends 181
length 2,8 m
amount of warp yarn needed 740 g

Reed 50/1

Weave Overshot

AMOUNT OF WEFT YARN NEEDED

Minimop Cotton Twine, 1 kg = approx. 700 m, Ø 2,5 mm
52 natural white 385 g

Lilli Tube Yarn, 1 kg = approx. 220 m, 80 % recycled cotton
20 % polyester, Lankava

22 smoky blue 480 g

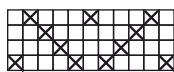
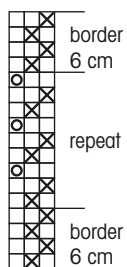


Overlap the new tube weft with the end of the old one for 10 cm. Leave the tails on the reverse side. Sew the tail with a few stitches to the weft below and cut. You can also draw the tube yarn tails through each other with a crochet hook before shuttling in the shed.

Treading:

× = background weft,
Minimop Cotton Twine
(same as the warp)

○ = pattern weft
Lilli Tube Yarn



18 x 10 = 180

181 threads in total

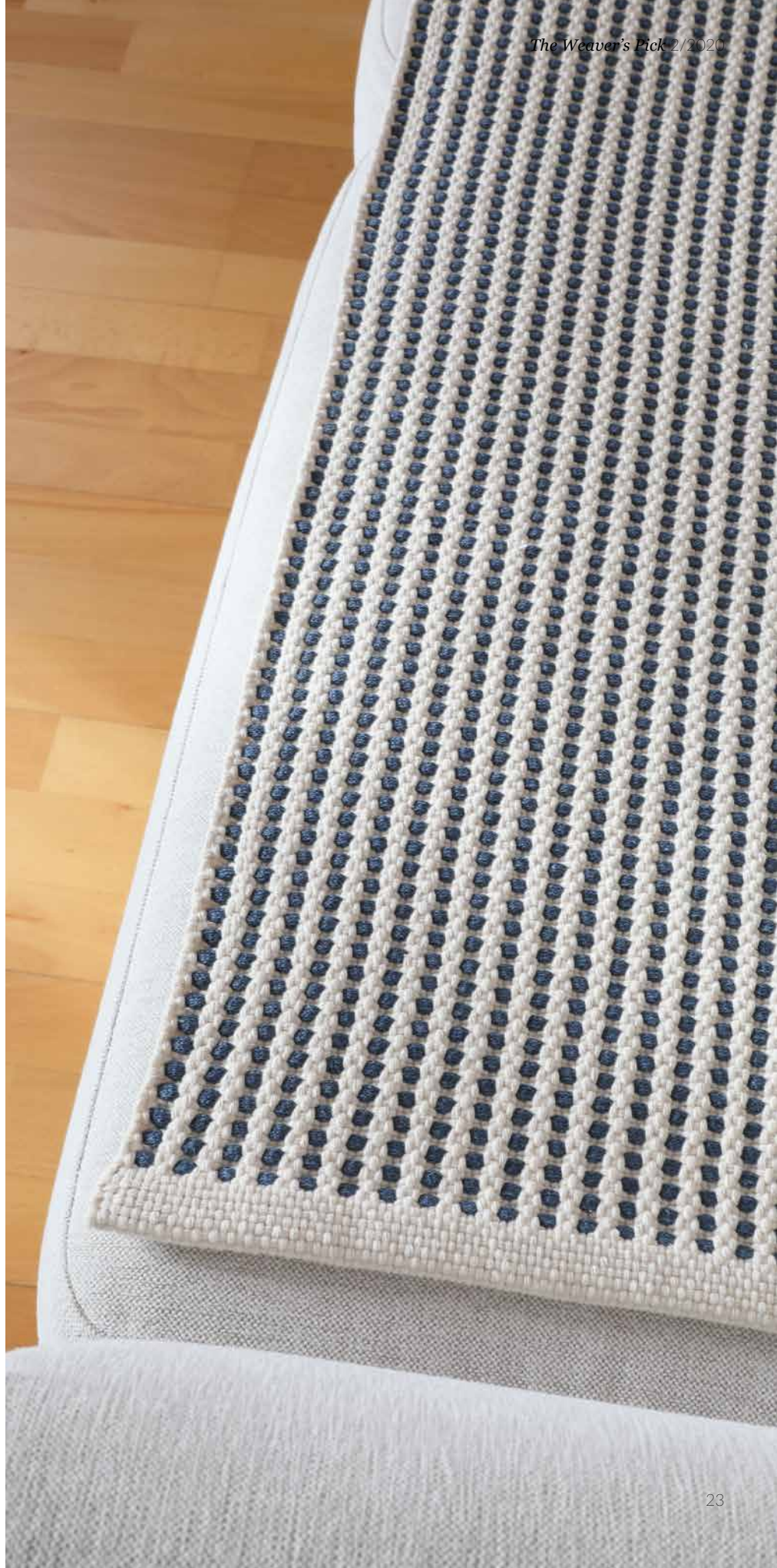
WEAVING INSTRUCTIONS

Weave 6 cm for the border using natural white Minimop cotton twine. Alternatively, you can leave fringes or weave just about 3 cm for the border and then fold it completely on the reverse side. The plain weave border is wider than the rug. Weave the rug according to the treading instructions. Density of the weave is 9 Lilli tube yarns + 18 Minimop cotton twines /10 cm. Woven length is 206 including the border. Nb. The pattern weft doesn't go around the two outmost warp ends. Start the looping weft by turning the tail back in the shed around the third warp thread from the edge in the beginning.

FINISHING

Sew 3-step zigzag on the ends. Press the rug through a damp cloth. Sew the borders by hand using 6-ply cotton twine. Use a blunt tipped tapestry needle. Machine-wash 40°C and spin 1200 rpm, or wash according to the materials you used. Dry flat in an airy and warm place. The fabric dries slowly. ●

The rug shrinks considerably both in width and length when woven and washed. Wind a long and wide warp! Keep the warp tension tight and use a temple.





DESIGN Satu Somero, Pisa Design & Lappajärven Värjäämö

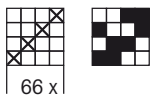
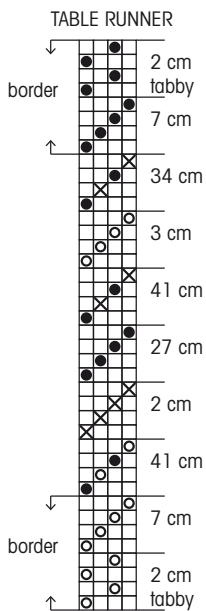
*Home décor textiles:
Table runner and Pillows, woven
Linen Pot trio, crocheted
Linenwool carpet, crocheted
Summer curtain, knitted*

Welcome Summer 3722

The warp Linen 16/4, tex 4x104, 1 kg = approx. 2400 m, unbleached No. 0
Warp width 44 cm
density 6 threads/cm
amount of warp ends 264
length 5 m
amount of warp yarn needed 550 g
Reed 30/2
Weave Tabby and rep
Weft Linen 16/2, tex 2x104, 1 kg = 4900 m
Density of the weave 9 threads/cm (weft)

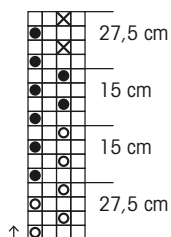
Treadling:

- = lighth red
- × = white (= ½-bleached)
- = unbleached



66 x 1
66 x 4 = 264 in total

PILLOW 2,
TABBY



PILLOW 1

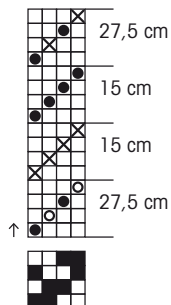


Table runner and pillows, Welcome Summer!

Making these designs is pure joy, I hope you enjoy weaving these as much I did.

The threading is straight on four shafts and treadling is also straight; tabby and rep treadles alternat. Weave one pillow with tabby. A small change on the structure makes the fabric surface interesting. The main colors are light red No. 4, ½-bleached white No. 1 and unbleached No. 0. Change the light red to a silver-gray and you get a new different look. *Weaving tip:* Do not use floating selvages, you get even edges if you weave with two shuttles.

TABLE RUNNER, finished size 42 x 150 cm

1. Border 2 cm tabby light red weft and 7 cm by alternating tabby and rep treadles using lighth red weft.
2. Stripe 41 cm tabby unbleached and rep lighth red.
3. Stripe 2 cm by alternating tabby and rep using white weft. Weave all the time with two shuttles to keep the edges even and smooth!
4. Stripe 27 cm by alternating tabby and rep using unbleached weft, again with two shuttles! ▶



*Knit lovely
linen curtain for
the Summer*



Tip!
You get even edges if you weave with two shuttles

5. Stripe 41 cm tabby unbleached and rep white.
6. Stripe 3 cm by alternating tabby and rep using light red weft.
7. Stripe 34 cm tabby unbleached and rep white.
8. Border 7 cm by alternating tabby and rep using unbleached weft and 2 cm tabby using unbleached weft.

Finishing: Sew 3-step zigzag stitches on the ends. Fold and iron the border 3 cm on the right side, 3 cm on the backside and inside allowance 2,5 cm. Machine stitch the borders and sew the open ends by hand.
Amount of weft yarn needed for 1 runner: No. 0 unbleached 80 g, ½-bleached = white 65 g and No. 4 light red (or silver-gray) 30 g.

PILLOW 1, finished size 40 x 40 cm

1. Stripe 27,5 cm tabby unbleached and rep light red
2. Stripe 15 cm by alternating tabby and rep using white weft.

3. Stripe 15 cm by alternating tabby and rep using unbleached weft.
4. Stripe 27,5 cm tabby unbleached and rep white.

Amount of weft yarn needed for 1 pillow: No. 0 unbleached 35 g, ½-bleached = white 25 g and No.4 light red (or silver-gray) 10 g.

PILLOW 2, TABBY, finished size 40 x 40 cm

1. Stripe 27,5 cm light red
2. Stripe 15 cm alternating unbleached and light red
3. Stripe 15 cm alternating unbleached and white
4. Stripe 27,5 cm unbleached

Amount of weft yarn needed for 1 pillow: No. 0 unbleached 42 g, 4 light red (or silver-gray) 30 g and ½-bleached = white 7 g.

Finishing: Sew 3-step zigzag stitches on the ends. Fold the fabric between stripes 2 and 3 in half and measure 42 cm. Iron a folding in that place for

placing an invisible zipper. Machine stitch a white invisible zipper and then sew the edges.

Love,
Pisa

Summer curtain, genuine joy of creation!

Design: Satu Somero, Pisa Design & Lappajärven Värjäämö

Size: width 135 cm

Yarn: Finnish Linen 16/2, 1 kg = n. 4900 m, 2 different shades

Equipments: circular knitting needle size 20.

Choose two shades of linen yarn that you like.

INSTRUCTIONS

1. Place the yarn bobbins in a stand, for example into a laundry basket with rods. Take a yarn end from both bobbins and cast on 75 sts with two ends.
2. Work garter sts. Slip the edge stitch.
3. Work until piece measures 240 cm. Note that the curtain becomes longer after hanging. You can stretch the curtain a little when measuring.
4. Cast off and weave in ends.
5. Enjoy the finished work by hanging it with curtain hangers or by piercing a thin curtain rod through the knitting.

Love,
Pisa

YARN AND PATTERN INQUIRIES:

Lappajärven Värjäämö Oy, +358 (0)40 8385449, www.filona.fi

Linen Pot trio, to hold and to cover!

Pattern: Satu Somero, Pisa Design & Lappajärven Värjäämö

Three sizes: Giant, medium, small.

Yarn: Finnish Veera linen yarn in bleached (nro 1) and linen (nro 2) colors. Linen cord in bleached (nro 1), linen (nro 2) and silver grey (20)
Technique: Crochet with doubled yarn. Pattern is done with single crochet (sc). Take note that the starting stitch and the stitch on the hook do not count as stitched. *Enjoy!*

Yarn amount:

Small pot: 110 g linen cord color silver grey (nro 20), 20 g linen yarn color linen (nro 2), 60 g linen colored Veera (nro 2)

Medium pot: 260 g linen cord in colors silver grey (nro 17) and linen (nro 2), and 120 g of linen (nro 2) Veera.



Giant pot: 500 g of white (nro 1) and linen (nro 2) colored linen cord and 240 g linen (nro 2) colored Veera

Abbreviations:

chain stitch (ch), slip stitch (sl st), single crochet (sc), stitch (s)

PATTERN FOR THE GIANT POT h 24 cm Ø 31 cm

round: make 5 chain stitches with white linen cord and linen colored Veera and close them off with a slip stitch (sl st) to a ring, take yarn through the first chain stitch and pull it through the stitch on hook.

round: 1 ch, 9 single crochet (sc) to ring, end the round with slip stitch to the first stitch.

round: 1 ch, *2 sc to one stitch, 1 sc* repeat through the round = 16s

round: 1 ch, *2 sc, 2 sc to one stitch* 1 sc = 21s

round: 1 ch, *2 sc, 2 sc to one stitch* =28s

round: 1 ch, *2 sc, 2 sc to one stitch* 2sc =38s

round: no increases =38s

round: 1 ch, *2 sc to one stitch and 3 sc* =48s

round: 1 ch, *2 sc to one stitch and 3 sc* =56s

round: no increases = 56s

round: 1 ch, *2 sc to one stitch and 3 sc* =69s

round: no increases =69s

round: 1 ch, *2 sc to one stitch and 4 sc* 2 sc =84s

round: no increases =84s

round: no increases =84s

round, start of the edge round. Make single crochet stitches to the back loops, no increases.



Edges of the pot:

17 – 35 rounds, make single crochet stitches with same color as the base.
36. – 41. rounds, change the color of linen yarn to same as Veera linen, and do final 5 rounds in single crochet. Finally cut yarns, pull them through the loop on hook, tighten and finish off the ends.

PATTERN FOR THE MEDIUM SIZE POT

Make rounds 1-9 same as in giant pot, with linen colored linen cord and white Veera.
Start of the edge round, make single crochet stitches to the back loops, no increases.
Now do the edge rounds 11-24 with same colors, in total 13 rounds.
On rounds 25-30 change linen cord to silver grey color and make 5 rounds single crochet. Cut yarn and pull it through the loop on hook, tighten and finish off the ends.

PATTERN FOR THE SMALL POT:

Make rounds 1-7 same as in giant pot, with silver grey linen cord and linen colored Veera.
On round 8, start the edge round, Make single crochet to the back loops of previous round, no increases.

Now do the edge rounds 9-18 with same colors, in total 9 rounds.
On rounds 19-21 switch linen cord to linen color and single crochet 3 rounds, cut yarn and pull it through the loop on hook, tighten and finish off the ends.

Delightful crocheted linenwool carpet, Oh how lovely!

Pattern: Satu Somero, Pisa Design & Lappajärven Värjäämö

Size: 65 x 85cm

Yarn: Finnish linen cord, tex 2x1250 and Esme wool carpet yarn

Crochet hook size: nro10

Technique: Crochet with doubled yarn. Take note that the start stitch and the stitch on the hook are not count as stitches in this pattern.

Amount of yarn needed: 140g unbleached linen cord (nro 2), 250g silver grey (nro 20), 500g black (nro 12) linen cord and 800g of beige Esme wool yarn.

Else: You can also do this model with doubled linen yarn.

Abbreviations: chain stitch (ch), single crochet (sc), half double crochet (hdc)

INSTRUCTIONS

row: Make 36 chain stitches with silver grey linen and beige wool (ch).

row: Turn the work around and crochet single crochet stitches to each chain stitch.

row: 2 ch, skip first stitch and to the second stitch * 3 hdc, 2 ch, skip two stitches* repeat 11 times, 2 ch, skip two stitches, 2 hdc to the last stitch.

row: 2 ch, *3 hdc to one stitch and 2 ch over two stitches* 2 hdc to the last stitch.

rows: do as row 4 back and forth.

Switch silver grey to unbleached linen, do not cut beige wool yarn.

– 13 rows: 2 ch *3hdc and 2 ch over two stitches* 2 hdc to last stitch.

Switch unbleached linen to black linen yarn, do not cut beige wool yarn.

14. – 29. rows: 2 ch *3hdc and 2 ch over two stitches* 2 hdc to the last stitch.

Cut yarns and pull them through the loop on the hook. Tighten and finish off the ends. Stretch and steam lightly with iron so the carpet will take it's shape.

Enjoy your work, Well done!

Love,

Pisa

YARN AND PATTERN INQUIRIES:

Lappajärven Värjäämö Oy, +348 (0)40 8385449, www.filona.fi

pisadesign.fi | facebook.com/pisadesign Oravanpesä 16 | 85100 Kalajoki | Finland

PISA DESIGN

T: +358 (0) 44 5678 463

M: satu.somero@pisadesign.fi

Add tabby shafts for the Selvages

There is not just one right way to thread selvages for rugs. Different weaves need different kinds of threadings, and it also matters what kind of materials are in use.

FLOATING SELVAGES

The easiest way to have straight and neat edges is to leave the warp end (a double thread) at the outer edge away from the heddle. This works out with most weaves, but if the rug is an overshot weave with a plain weave background, it doesn't help much. Long floats of the pattern wefts might still appear at the edges. By trying out different threadings at the edges and different directions of the shuttling you might find a reasonable technique, but the simplest way is to add tabby shafts for the selvages. We added two tabby shafts to the checkered rag rugs on pages 30 - 33.

ADDED TABBY SHAFTS

Two extra shafts are added at the back of the main pattern shafts. Only the tabby warp threads are threaded on those shafts. If the wefts are thin and the pattern weft is only slightly heavier than the background weft, the result will be good despite of the threading order of the tabby. When the weft materials are heavy or the difference of the pattern weft and background weft is considerable, the outmost tabby warp ends at the edges must be on different shafts to form similar edges. The main threading of the rug must be adjusted so that the plain weave continues in a right order. The two outmost warp ends are double threads at both edges as is usual in rag rugs.



Left edge



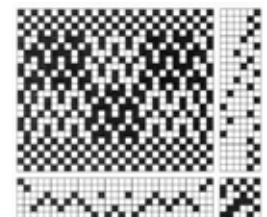
Right edge

We threaded again the three outmost warp ends according to the Draft C at the end of the rug warp for try out. The outmost warp ends at the edges are on different shaft, and therefore background and pattern wefts twine in the same way on both edges.



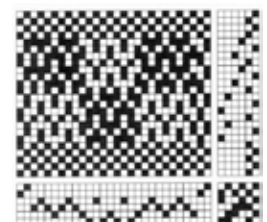
We wove the checkered rug rugs on the page 30 - 33 using extra tabby shafts for the selvages. The outmost warp ends at the edges are on the same shaft. Draft A. The pattern weft is heavier than the background weft and forms a nice edge, but the edges of the rug are not similar.

THREADINGS FOR TABBY SHAFTS

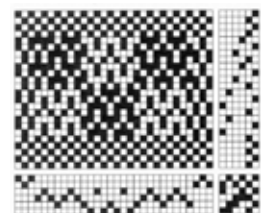


Draft A. The outmost warp ends at the edges are on the same shaft. The edges of the rug are not similar.

Draft B. The outmost warp ends at the edges are on the different shaft. The edges of the rug are quite similar also when woven with different weight wefts. Note! The last warp end of the main threading is removed for the correct plain weave continuation.



Draft C. Three plain weave warp ends are added to both edges. The outmost warp ends are on different shafts. The edges of the rug are quite similar also when woven with different weight wefts





PATTERN DESIGN **Marjatta Hirvi** WEAVER **Kirsi Reilin**

Checkered cotton rug
 Finished size 94 x 210 cm

Powder rug 3723

The warp 12-ply Cotton twine, tex 30x12, 1 kg = 2560 m
Warp width 106 cm
 density 2,5 threads/cm
 amount of warp ends 265 + 4
 length 5,8
 amount of yarn needed 600 g (= 104 g/1 m)

Reed 25/1
Weave Crackle weave

AMOUNT OF WARP YARN NEEDED

Background weft (tabby):

Moppari Twisted Mop Yarn, tex 100x10x3,
 1 kg = approx. 310 m, Ø 3 mm

80 % recycled cotton 20 % polyester, Suomen Lanka
 powder (color No. 4) 1,51 kg

Pattern weft:

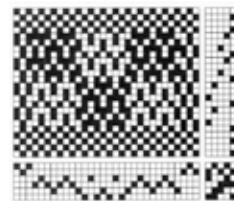
T-shirt yarn (cotton tricot) natural white 3,22 kg

WEAVING INSTRUCTIONS

Weave 8 cm alternating three shuttles for the border: 1 Twisted Mop Yarn + 1 Twisted Mop Yarn + 1 T-shirt yarn. Weave the rug according to the treadling instructions using the Twisted Mop Yarn as a background weft and the T-shirt yarn as a pattern weft. The woven length of one large square is 30 cm. The woven length of the rug is 244 cm including the borders.

FINISHING

Tie the warp threads with tight overhand knots. Cut the ends to a length of 3 cm. Press the rug through a damp cloth. Sew the borders by hand using 6-ply cotton twine or similar strong thread. Leave only a small inside allowance. The height of the finished border is 3,5 cm.



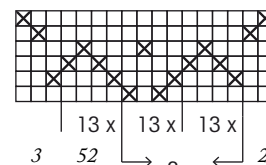
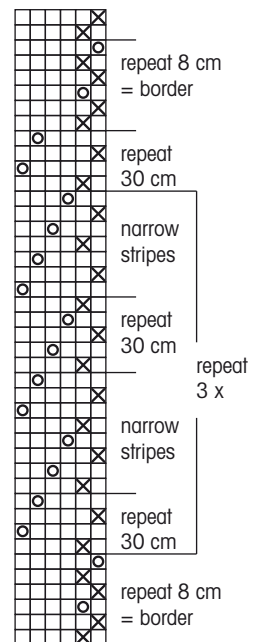
There are several ways to thread the edges. See page 29 for more information.

Treadling:

- × = background weft Twisted Mop Yarn
- = pattern weft T-shirt yarn

Threading:

The two outmost warp ends are double threads at both edges



$2 \times 104 = 208$

$265 + 4 \text{ threads in total}$



Checked rag rug
Finished size 96 x 177 cm

Summer checks 3724

The warp 12-ply Cotton Twine, tex 30x12, 1 kg = 2560 m
Warp width 106 cm
 density 2,5 threads/cm
 amount of warp ends 265 + 4
 length 5,8
 amount of yarn needed 600 g (= 104 g/1 m)

Reed 25/1
Weave Crackle weave

The rug woven only out of cut cotton rags is light and thin. Weave the rug to use on the floor or on the couch. Wind a wider warp for the coach coverlet. Thread the check blocks wider or add check blocks to the threading.



AMOUNT OF WARP YARN NEEDED

Background weft (tabby):

Cotton rag weft, width approx. 1,5 cm
 approx. 1100 g per 1 rug
 = approx. 120 g / 21 cm = 1 square height

Pattern weft:

Cotton rag weft, width approx. 2,2 cm
 approx. 1600 g per 1 rug
 = approx. 180 g / 21 cm = 1 square height

In total approx. 2700 g of background weft and pattern weft per 1 rug. Rag weft strips are cutted from the cotton sheets.

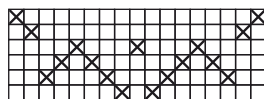
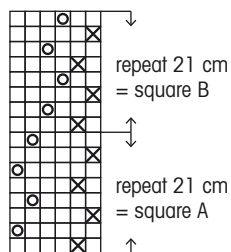
See page 29 for more information on the selvages.

Treadling:

× = background weft
 ○ = pattern weft

Threading:

The two outmost warp ends are double threads at both edges



3 52 208

$2 \times 104 = 208$

265 + 4 threads in total

WEAVING INSTRUCTIONS

All blue shaded cotton rags are shuttled in the plain weave sheds and the mottled in pattern sheds. The pattern wefts are cut wider (n. 2,2 cm) than the background wefts. (n. 1,5 cm). Start and finish the rug with few shots of 12-ply cotton twine/same yarn as the warp. One square height is 21 cm and there is 9 squares in this rug. The woven length of the rug is 189 cm.

Density of the weave is approx. 3 background weft + 3 pattern weft/1 cm.

FINISHING

Tie 2 + 2 warp threads with a tight weaver's knot. Make a twisted fringe. Cut the fringe to an even length.



BACKGROUND WEFT:

Square 1, tabby weft

Square 2, tabby weft

Square 3, tabby weft

Square 4, tabby weft

Square 5, tabby weft
= the middle

PATTERN WEFT:

Square 1, pattern weft

Square 2, pattern weft
12 cm

Square 2, pattern weft
9 cm

Square 3, pattern weft

Square 4, pattern weft

Square 5, pattern weft
= the middle



PATTERN DESIGN Marjatta Hirvi WEAVER Kirsi Reilin

Poppana table runner
Finishing size 41 x 121 cm

Old rose charm

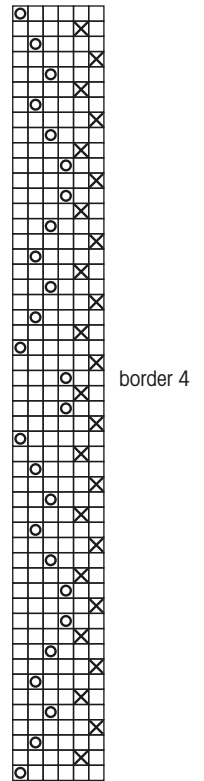
3725

The warp 6-ply Cotton Twine Liina, tex 30x6,
1 kg = approx. 5300 m, Suomen Lanka

Warp width 42,2 cm
density 2,5 threads/cm
amount of warp ends 169 + 4
length 10 m
amount of warp yarn needed 325 g

Reed 40/1

Weave Overshot



WEAVING INSTRUCTIONS

Leave 8 - 10 cm for the fringe on both ends. Start and finish the runner by shooting a few throws with 6-ply cotton twine.

The background weft was light grey. There are two different shades of gray in this runner. They can be seen in the pictures, but they are not given in the weaving instructions.

WEAVING

- 6 cm tabby light gray
- border 1 dusty rose
- 1 cm tabby
- border 2 old rose
- 1 cm tabby
- border 3 dusty rose
- 6 cm tabby
- border 1 dusty rose
- 2 cm tabby
- border 1 cocoa brown
- 1 cm tabby
- border 1 cocoa brown
- 4 cm tabby
- border 1 cocoa brown
- 1 cm tabby

- border 4 old rose
 - 1 cm tabby
 - border 3 cocoa brown
 - 4 cm tabby
 - border 1 dusty rose
 - 1 cm tabby
 - border 2 old rose
 - 1 cm tabby
 - border 3 dusty rose
 - 4 cm tabby
 - border 1 dusty rose
 - 1 cm tabby
 - border 1 cocoa brown
 - 1 cm tabby
 - border 1 cocoa brown
 - 1 cm tabby
 - border 4 old rose = *the middle*
- Weave the other end of the towel as a mirror image. Weave border 1 instead of border 2 and vice versa. The woven length is 125 cm.

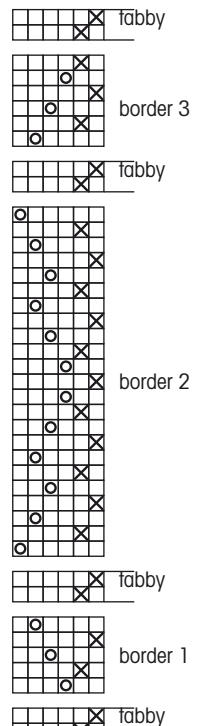
AMOUNT OF WARP YARN NEEDED

- Poppana cotton bias, width 10 mm, Poppanavakka
- 2204 light gray 405 g
- 5206 old rose 70 g

- 7205 dusty rose 25 g
- 7803 cocoa brown 25 g

FINISHING

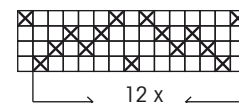
Tie the warp threads with overhand knots. Cut the fringes to an even length.



Treadling:

- X = light background weft, tabby
- O = pattern weft, borders

The two outmost warp ends are double threads at both edges



1 12 x 14 = 168



169 + 4 in total



Colors as a source of inspiration



The wall hanging was woven with this warp:

The warp Linen 8/2 (= 8/2 Linvarp) unbleached, tex 210x2, 1 kg = 2400 m, Garnhuset i Kinna

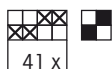
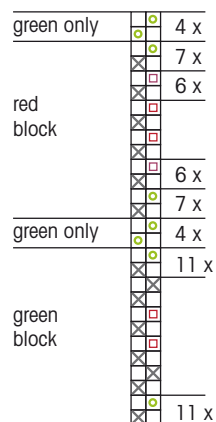
Warp width 41 cm
density 4 threads/cm
amount of warp ends 164 + 2 lankaa
amount of yarn needed 65 g/1 m

Pirta 40/1
Sidos Weft faced rep
Weft Poppana bias
amount of weft yarn needed approx. 450 g/1m

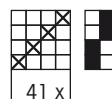
Treadling

- × = clay 2203
- = pistachio green 4206
- = cranberry red 5707
- ◻ = old rose 5206 or rose 5204 or fuchsia red 5701

Weave by alternating green and red blocks in free order. Weave a green stripe between green and red blocks.



OR



If you wind a new warp for the wall hanging:

The warp 9-ply Cotton Twine, tex 30x9, 1 kg = approx. 3 480 m or a similar durable yarn

Warp width 41 cm
density 4 threads/cm
amount of warp ends 164 + 4
amount of yarn needed approx. 47 g/1 m

Reed 40/1
Weave Weft faced rep

PATTERN DESIGN Kirsi Reilin WEAVER Kirsi Reilin

At the end of the warp

3726

We wove the Layers ryas for the previous issue, but there was still some warp left. Kirsi wove a summer spirited wall hanging at the end of that warp. The wall hanging is woven in same way as a traditional Finnish "raanu", a thick and vertical striped woollen tapestry.

A familiar situation for all of us. The weave is finished, but there is still warp left. Weavers are clever and economical and weave away all kinds of yarns and materials in the end of the warp. Many times these additional weaves are joyful surprises: Oh, you did it in that way. It looks great! The warp for the Layers ryas was wound of heavy linen yarn, but you can weave this tapestry for example at the end of a cotton twine warp. Drafts for 2-saft and 4-saft weaves are on the left page.

The 9-ply cotton twine is a suitable yarn, if you want to wind a new warp for the tapestry. Try different kind of yarns and materials for the weft. With chenille yarns you get a smooth velvety surface to the fabric. A traditional "raanu" tapestry is woven of wool yarns, and often they were single ply yarns.



Arrange the colors freely. Take a plant, scenery or an emotion as a source of the inspiration and keep it in your mind when you design stripes and choose the colors. A rhubarb leaf was the color base for this tapestry weave.

Wooden beads at the fringes:

1. fringe, a bead at the edge
2. fringe without a bead
3. fringe, a bead at halfway
4. fringe without a bead etc.

1. fringe: Draw the warp threads through the bead and make a twisted fringe.
3. fringe: Twist the fringe to the halfway and make a knot. Draw the warp threads through the bead and twist the rest of the fringe.



Weaver's Library

KANKAANRAKENTAJAN OPAS

This guide (in Finnish) for dressing a loom is a popular textbook on the practical work involved in weaving. The guide includes clear instructions for winding the warp, beaming and tying up the treadles, and tips for actual weaving. 52 pages. A basic guide to keep by your loom! Price €15.80



KANKAANRAKENTAJAN SIDOSOPPI

This guidebook (in Finnish) on the theory of fabric structure includes the basics of fabric structure and the most common weave types for floor looms. For beginners, it also includes clear drawings on how to tie up treadles for creating plain weave and basic twill. 68 pages. Price €18.90



KANKAANKUTOJAN MATTOKIRJA

The most beautiful rug designs of the Weaver's Pick magazine in one book (in Finnish). The book includes the most popular designs over the years and the best weave patterns for rugs. 128 pages. Price €24.80



Note!

All subscriptions and orders can be done by sending an email to theweaverspick@mallikerta.fi, via website


or by sending a letter to Mallikerta / The Weaver's Pick
Vanhamaantie 3-5 A 6
47200 Elimäki FINLAND

Home / Patterns


Patterns

Showing 1-3 of 20 results


Sort by latest



Christmas Carol 3708
3.90 €



Patchwork rug 3707
3.90 €



Pulse rug 3706
3.90 €

Do you need only a specific pattern?

Visit the Patterns site

At www.mallikerta.fi you'll find a new Pattern Library where you can buy single patterns. At this moment there are patterns from the latest issues, but we are adding favorite patterns from the past issues.

www.mallikerta.fi

LAPPAJÄRVEN VÄRJÄÄMÖ OY

Suomessa värjättyjä luonnonmateriaaleja kudontaan ja käsitöihin

PISA DESIGN SUSTAINABLE TEXTILE



www.filona.fi



*In the next
issue...*

A colorful cottolin fabric is spotted with small pattern blocks. Weave the checks as a satin weave and the stripes as a twill - or vice versa.

The autumn issue 3/2020 is out on September

www.mallikerta.fi

On our website, you can order single issues or subscribe to the full volume of the Weaver's Pick magazine, or order back issues from previous years. If you wish, you can also order the guidebooks (in Finnish).

Please make sure to let us know your new address. You can contact us by sending an email, via the website or by using the form.

SUBSCRIPTION PRICES

Full year 2020:
Europe 2020 €44,70 /Four issues
The rest of the world 2020 €49,80 /Four issues

**The full year subscription includes four issues.
The invoicing period is a full year. A continuing
subscription will automatically continue the
following year. The digital form is included in the
subscription.**

SUBSCRIBER SERVICE

Contact information: Mallikerta MH
Vanhamaantie 3-5 A 6, 47200 ELIMÄKI, FINLAND
theweaverspick@mallikerta.fi
www.mallikerta.fi
Tel. +358 40 170 2007 (Mon-Fri 9:00-17:00)
Publisher: Mallikerta MH



The Weaver's Pick

A magazine full of ideas for weavers

Standard
postage

Mallikerta

The Weaver's Pick magazine
Vanhamaantie 3 - 5 A 6
47200 ELIMÄKI FINLAND

I WOULD LIKE TO SUBSCRIBE TO
the Weaver's Pick magazine

for myself as a gift

VOLUME 2020
(1-4/2020) subscription to Europe €44,70
Issues 1/2020 and 2/2020 by post

VOLUME 2020
(1-4/2020) subscription outside Europe €49.80€
Issues 1/2020 and 2/2020 by post

My new address as of ___/___2020

I wish to cancel my subscription at the end of the period I
have paid for.

SUBSCRIBER/NEW ADDRESS

Name

Street address

Postal code and town/city

Telephone

Email

RECIPIENT OF A GIFT SUBSCRIPTION/MY OLD ADDRESS

Name

Street address

Postal code and town/city

Telephone

Email



The Weaver's Pick

*A magazine full of ideas
for weavers*

Follow us on social media!



[instagram/mallikerta](https://www.instagram.com/mallikerta)



[facebook.com/mallikerta](https://www.facebook.com/mallikerta)



[pinterest.com/mallikerta](https://www.pinterest.com/mallikerta)

www.mallikerta.fi



PICK UP PEARLS

The fabric surface becomes covered with weft loops, which develops to the shapes. Weaving is fun and the time flies when you watch the shapes come up. Use heavy and thick yarns and one small rug or a pillowcase fabric is ready in a few hours.