

Price €9,40 incl. VAT

mallikerta

The Weaver's Pick

A magazine full of ideas for weavers ~~~~~ AUTUMN 3 | 2020

MOP AND PAPER YARNS

*Easy projects
with table looms*

10

THREE STRIPES

*A new rug pattern to weave
three colours side by side*

20



The Weaver's Pick

A magazine full of ideas for weavers

In this issue

**Colourful warp invites
you to weave towels and
tablecloths**

4

**Weave in the same warp
a thin scarf and a poncho**

34

”

*Weft yarns for the poncho
are dyed with plants picked
up from own backyard”
p. 30*

20

**Recycle all leftover wefts
and strands in the Three
stripes rugs**

”

*As lights and reflections on lake
surface” p. 16*

**Lake Saimaa rep
table runner**

16

AUTUMN
3/2020

TOWELS AND TABLE RUNNERS

- THE RAINBOW WARP** 4
Square handtowels, dark table runner and pink table runner from cottolin.
- LAKE SAIMAA** 16
The blue waves of Saimaa Lake flickers on the rep weave table runner.
- THIS LAND** 18
The colours of the rep weave table runner are taken from the blue lakes and green forests of the country.

HANDY WITH SMALL LOOMS

- HIGH AND LOW BASKET** 10
Baskets are woven into the mop yarn warp with paper yarns.
- SMALL TABLE RUNNER** 14
A table runner woven into the same mop yarn warp.

HOME DÉCOR TEXTILES

- THIRD COLOR RUGS** 22
Kirsi's rag rug
Shades of blue rug
Yarn mix rug with tassels
Maarit's rug pattern for leftover tube yarns
A rug pattern with three different color blocks side by side. All materials and yarns are suitable.

SCARVES AND PONCHOS

- LUPINE STRIPES** 30
- GREEN TWILL-AND-TABBY SCARF** 32

EDITOR-IN-CHIEF Marjatta Hirvi
LAYOUT Marjatta Hirvi
PATTERN EDITING Kirsi Reilin, Kirsi Vakkari, Maarit Windt
PUBLISHER Mallikerta MH

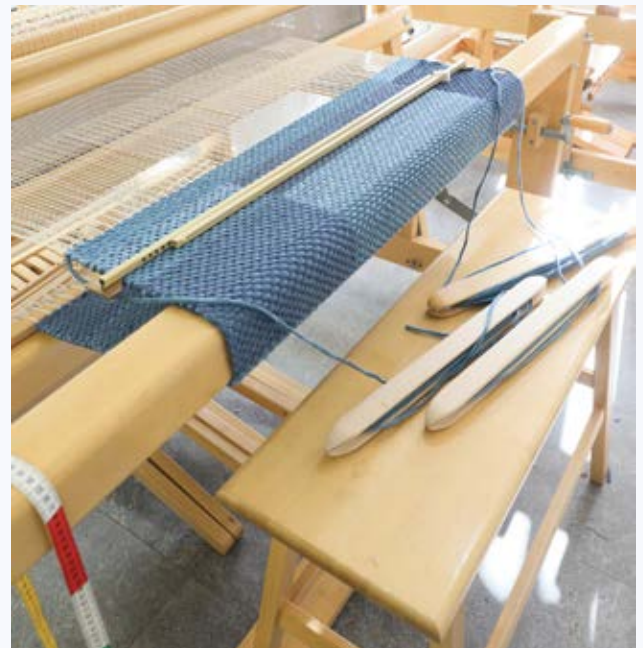
CONTACT INFORMATION Mallikerta MH
Vanhamaantie 3-5 A6, 47200 ELIMÄKI,
FINLAND
toimitus@mallikerta.fi

CUSTOMER SERVICE www.mallikerta.fi
Tel. +358 40 170 2007

PRINTING HOUSE Painotalo Plus Digital

he Weaver's Pick magazine is published four times a year. Past issues are available from the publisher. The magazine accepts no responsibility for any typographical errors or other inaccuracies in the content that may cause our readers inconvenience, loss of working time or financial damage. The commercial use of the weaving patterns and the sharing of designs online is forbidden.

39th volume 2020
ISSN 0782-1530



Recycling by weaving rugs

Recycling is perfect for woven fabrics, as you can throw a wide variety of yarns and materials between the warp ends. The result should be beautiful and usable, but weaving must also be joyful! Weaving a rug is one of the best ways to recycle your extra yarns. Making it uses up a large amount of yarn and there is always a need for rugs in the house. I have designed rug patterns for the magazine which would make it easy to take care of the extra yarn stash, but it feels like the most functional and popular pattern is still missing. The one that would get weavers to book the time for a weaving course and wind a warp on their own looms for a rug.

THE THREE STRIPES RUG of this issue is the latest rug pattern I specifically designed for recycling. In this rug you can use all uneven and unevenly dyed t-shirt yarns and small amounts of rug yarns and knitting yarns. The rug can be woven with three squares of different colours next each other. The wefts interlace tightly, so the rug is firm and stable.

TABLE LOOMS are perfect for using small amounts of yarn. This time we wound the warp on the table loom from a mop yarn that was left over from our earlier weaving projects and wove baskets and a small table runner. For the weft we used a variety of paper yarns and paper ribbon. The round base of the basket is also woven in a frame! Weaving with a frame was fun and the result was beautiful. You can also weave in this way, and find that weaving can be easy and relaxing.

Joyful moments with weaving for the coming autumn!

Marjatta



DESIGN OF PATTERN **Marjatta Hirvi** WEAVER **Kirsi Vakkari***Finished sizes**Square handtowels 51 x 54 cm, 3 kpl**Dark table runner 51 x 108 cm**Pink table runner 51 x 73 cm*

The Rainbow warp

3727

COLORFUL COTTOLIN FABRIC IS SPOTTED WITH SMALL PATTERN BLOCKS

The inspiration for this project was the beautiful colour scheme of Cottolin yarns and the aim to blend them together.

There is a wide selection of shades in the Cottolin yarn that was used, which made it easy to choose the colours for the project. Our tip is not to choose too many colours as it can become difficult to constantly change the yarn.

In the final plan warp stripes only change from light to dark in the middle and back to the light edge (see picture). One side of the warp is red, and the other side is lilac. Instead of blending, colour boundaries have been highlighted with narrow colour stripes with a different structure than the wider stripes.

The wide colour stripes are threaded and tied to form with false satin weave, but the narrow stripes are threaded to form twill. All colour stripes are broken with small pattern spots. By changing the treadling, the satin weave can be changed to twill and vice versa.

By shooting the weft colours according to the colour order of the warp you get small square towels or cloths with symmetrical colouring. The colours of the warp and the weft blend into a grid where the colours change from light corners to a dark middle.

Weave longer towels or tablecloths with one colour or stripes with two or more colours in this same warp!





INSTRUCTIONS FOR WINDING THE WARP

8 threads plum (2253)
 40 " powder pink (2209)
 16 " plum red
 40 " tea rose (2212)
 16 " blum red
 40 " burgundy red (2244)
 64 " blum red
 64 " dark violet (2298)
 40 " violet (2293)
 16 " dark violet
 40 " lavender (2245)
 16 " dark violet
 40 " powder pink
 8 " dark violet
 448 threads in total

AMOUNT OF WARP YARN NEEDED, length 4,8 m
 Cottolin 22/2 (22/2 Bomull Lin), tex 76x2, 1 kg = n. 6400 m

2253 plum (dark bluish-red) 80 g
 2298 dark violet 80 g
 2209 powder (ligh pink) 57 g
 2244 burgundy red (dark red-purple) 28 g
 2293 violet 28 g
 2245 lavender (light violet) 28 g
 2212 tea rose (orange rose) 28 g
 Yhteensä 329 g

The warp Cottolin 22/2 (22/2 Bomull Lin), tex 76x2,
 1 kg = n. 6400 m, Garnhuset i Kinna

Warp width 56 cm
 density 8 threads/cm
 number of yarn ends 448
 length 4,8 m

Reed 40/2

Weave Combined twill and false satin

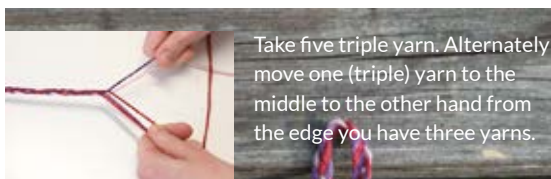
Square hand towels

Finished size 51 x 54 cm, 3 pcs

Finished size after washing 47 x 49 cm

FINISHING THE TOWELS

Sew the towel ends with 3-step aigzag stitches and cut the pieces apart. The inside allowance is 1 repeat unit = 1 cm. The finished border width is 1 cm. Sew borders by hand. Sew a hanging loop inside one corner of the towel. Loops are braided of the same yarns used in towels.



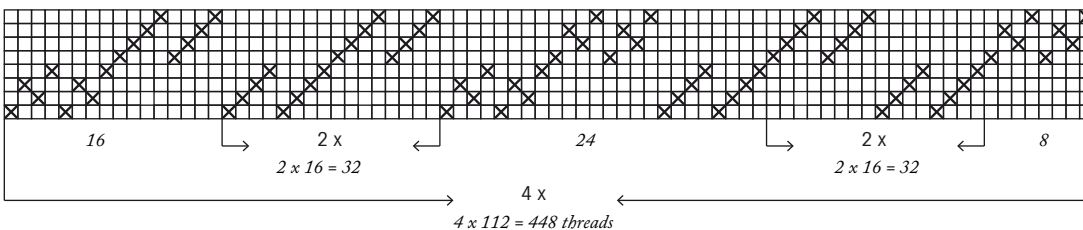
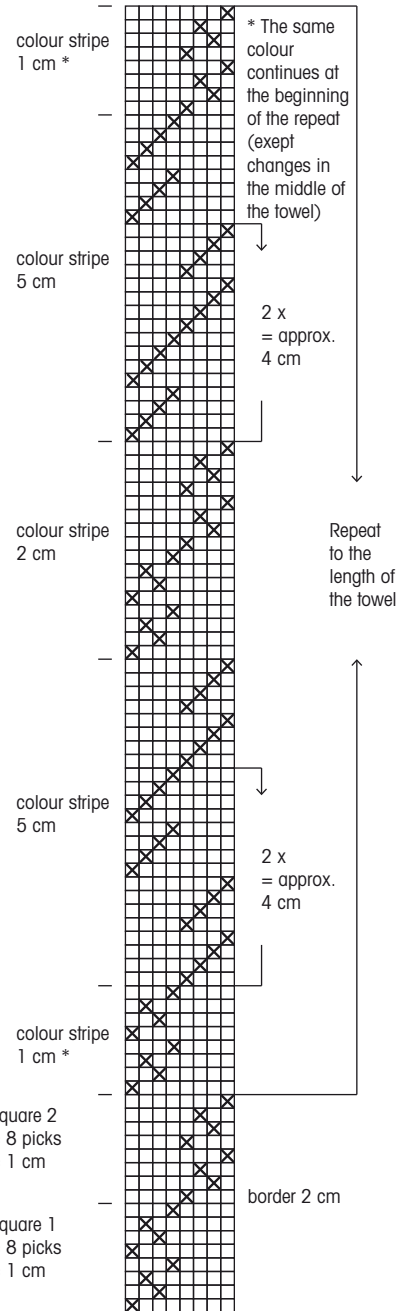
The density of the weave is 8 threads/cm. 1 square is 8 weft shots = 1cm. Weave 2 squares = 16 shots = 2 cm with the plum red for the border. Use the same colour order for the weft as is in the warp. The narrow blum red stripe at the beginning and the dark violet at end of the towel is 8 shots = 1 cm. Wide stripe is 40 shots = 5 cm and narrow stripe is 16 shots = 2 cm. Shape of the towel is a square. The woven length was 62 cm, including borders á 2 cm = 4 cm. The size when removed from the loom was 51 x 60 cm.

AMOUNT OF WEFT YARN NEEDED, 1 towel
 Cottolin 22/2 (22/2 Bomull Lin), tex 76x2, 1 kg = n. 6400 m

2253 plum red 7 g
 2298 dark violet 14 g
 2209 powder 8 g
 2244 burgundy red 5 g
 2293 violet 5 g
 2245 lavender 3 g
 2212 tea rose 4 g
 46 g in total



Weave the border to the end of the towel, as at the beginning.



SQUARE HAND TOWELS
Satin weave in the large squares
Twill in the narrow stripes



according to the treadling instructions. One stripe is 16 squares = 16 cm. Weave 18 squares with the blum red at the end of the table runner, including the border.

The woven length is 121 cm, including the borders.

The size of the cloth after taken off the loom is 51 x 79 cm.

Light Pink table runner

Finished size 51 x 73 cm

Finished size after washing 47 x 67 cm

AMOUNT OF WEFT YARN NEEDED for 1 table runner

Cottolin 22/2 (22/2 Bomull Lin), tex 76x2, 1 kg = n. 6400 m

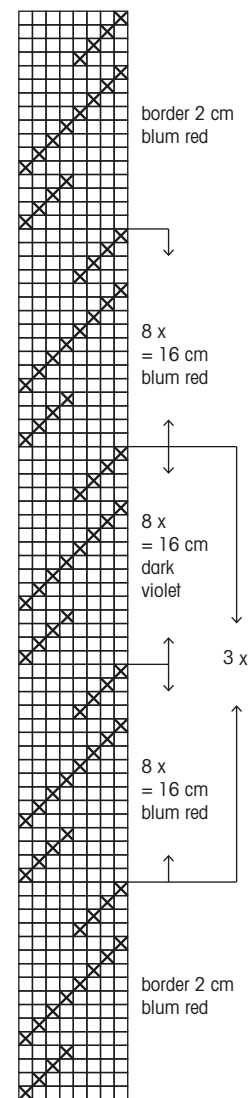
2209 powder pink 54 g

WEAVING INSTRUCTIONS

The density of the weave is 8 picks/cm. Weave the table runner with powder pink yarn according to the treadling instructions. The woven length is 85 cm, including the borders. The size of the cloth after taken off the loom is 51 x 79 cm.

FINISHING THE TABLE RUNNERS

Sew the table runners ends with 3-step zigzag stitches and cut the pieces apart. The inside allowance is 1 square = 1 cm. The finished border width is 1 cm. Sew the borders by hand.



Dark table runner

Finished size 51 x 108 cm

Finished size after washing 47 x 99 cm

AMOUNT OF WEFT YARN NEEDED, 1 table runner

Cottolin 22/2 (22/2 Bomull Lin), tex 76x2, 1 kg = n. 6400 m

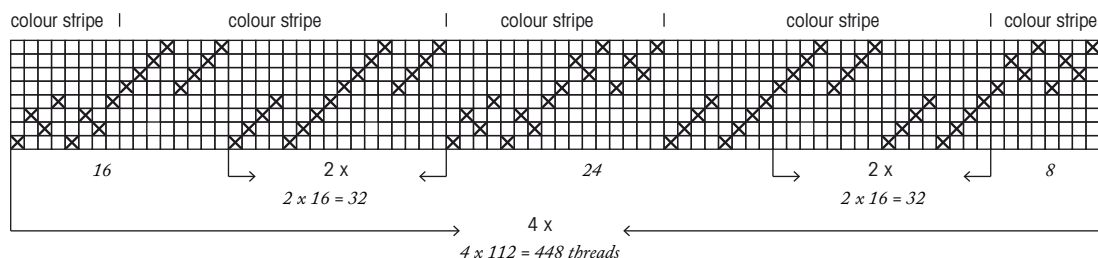
2253 blum red 52 g

2298 dark violet 34 g

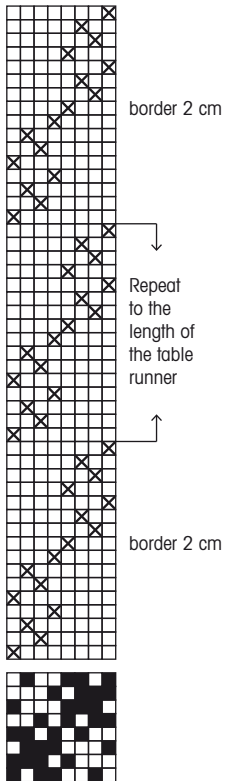
WEAVING INSTRUCTIONS

The density of the weave is 8 picks/cm. One square is 8 picks = 1 cm. Start the table runner with 18 squares = 18 cm with plum red, including the border 2 squares = 2 cm.

Weave the table runner striped with dark violet and blum red



DARK TABLE RUNNER
Satin weave in the large squares
Twill in the narrow stripes



LIGHT PINK TABLE RUNNER
Twill in the large squares
Satin weave in the narrow stripes



DESIGN OF PATTERN Kirsi Vakkari ja Marjatta Hirvi WEAVER Kirsi Vakkari

*Finished sizes**Lower basket 14 x 51 cm**Narrow basket 19 x 33 cm**Small table runner 19 x 30 cm*

Easy projects with table looms 3728

Table looms make it easy to weave creatively with different kinds of materials. Dressing the table loom and weaving is fast and a weave can be done with a small amount of yarn. You don't have to settle for a plain weave, as you don't have to tie the treadles separately for pattern structure as in a floor loom. Pattern weave and plain weave are woven with same levers, but they are lifted in different order.

We chose a rosebath threading for this pattern which produces more structures than a straight entry. The warp is wound of mop yarn that is also suitable for beginners. The yarn is thick, so there are less warp threads to handle and the fabric is quickly woven. The weft in the baskets and the table runner is flat paper ribbon and paper yarn. The fabric can be washed gently by hand.

Weave the round bottoms of the baskets in the frame! Beautiful colours of the bases come from a variegated paper ribbon. If you want to increase the stability of the bottom, weave two bottom pieces and insert a cardboard or similar between them. Small weaving frames can be found in craft shops and supermarket craft departments.

Weave a round base for the basket first and take a circumference from it. Weave then edge fabric on the table loom to length of the circumference of the base.

**The warp** Minimop Cotton Twine

1 kg = n. 700 m

circumference approx. 2,5 mm, Lankava

Warp width 20,3 cm (13,7 cm)
density 3 threads/cm
number of warp ends 61 (41)
length 2,4 m
amount of yarn needed 210 g

Reed 30/1**Weave** Plain weave and twill, a rosebath threading

We wove first the higher basket and the table runner into the warp. After those woven, we took one repeat (10 and 10 threads) unit away from the warp from both edges. The lower fringe-edged basket is woven into a narrower warp.

A round weave for the basket base

WEAVING INSTRUCTIONS

A round weave can be woven on a circular or a square weaving frame. We wove the base for the narrow basket on a small square frame purchased from a craft shop and for the wide basket with Prym Loom Maxi square.

The warp: 6-ply black cotton twine, tex 30x6, 1 kg = 5300 m or similar yarn. Slightly elastic and strong yarn is most suitable.

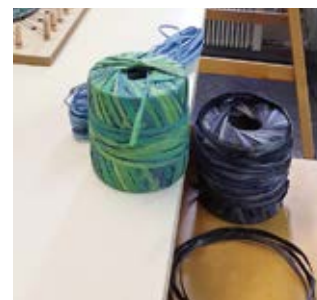
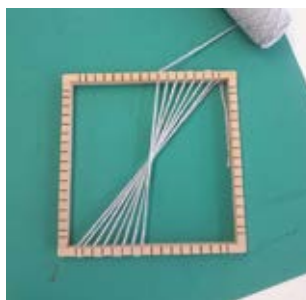
The weft: Flat paper ribbon and paper yarn, also 6-ply cotton twine/warp yarn for the beginning and for ending.

WARPING THE FRAME

Tie a knot around the side of the frame / around one peg. Pull the yarn to the opposite side of the frame and wrap the yarn around the peg and bring back to the left of where you tied on your yarn (counterclockwise). Pull the yarn back to the opposite side of the frame and wrap the yarn around the peg to the right. Continue like this working counterclockwise until all pegs have been wrapped. The threads overlap at the centre of the frame. Tie the yarn end to the side of the frame / around the peg. In the narrow basket, the warp thread is double. There is an example of the start in the photo on the right.

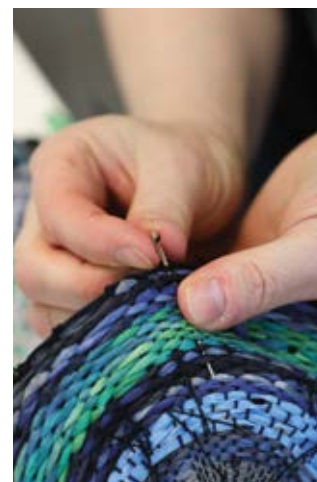
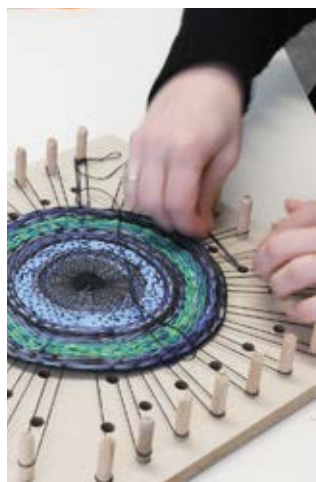
WEAVING

Thread your yarn and go over and under each warp thread, as in a plain weave. To ensure that the plain weave is continued correctly, thread the first and the last warp end as one thread (when there is an even number of warp threads). Start with the same yarn as in the warp and continue for a few rounds with paper yarn. Weave the base using the flat paper ribbon to the desired size. End the weaving with a few rounds of paper yarn and at the very last round weave with the same thread as the warp.



FINISHING

Remove weaving from the frame. Cut the loops and double knot warp threads 1 + 1. Darn warp ends back into the weave parallel with the warp threads. Press the fabric through an ironing cloth.



Weaving the basket sides with a table loom

WEAVING INSTRUCTIONS

Leave around 4 cm for the fringe on both ends. Weave the fabric with paper yarn as a plain weave weft and paper ribbon in double as a pattern weft. Start and finish with 3 shots of plain weave with the paper ribbon. Weave the fabric by alternating the paper yarn and the variegated paper ribbon according to the treading instructions. Change the weft colours after 4 – 8 cm in a free order. Start and finish with the same colour. The density of the weft is 2 plain weave + 2 pattern weft/1 cm.

Take the measure of the circuit of the basket base and weave the fabric to the same length + 1 – 2 cm + plain weave ends.

NB Loosen the warp when measuring the length. 50 cm of woven fabric on the loom was 46,5 cm after it was removed.

DRAFT FOR THE TABLE LOOM

1 = the lever on the left (lifts the furthest shaft in the back), 2 = lever 2 (lifts the second shaft from the back), 3 = lever 3 (lifts the third shaft) and 4 = the lever on the right 4 (lifts the foremost shaft).

Plain weave:

2 ja 4
1 ja 3
Repeat from the beginning.

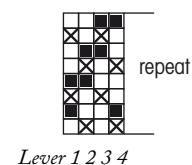
Zigzag pattern:

2 ja 4 tabby weft = ground
1 ja 4 pattern weft = pattern
1 ja 3 ground
1 ja 2 pattern
2 ja 4 ground
2 ja 3 pattern
1 ja 3 ground
3 ja 4 pattern
Repeat from the beginning.

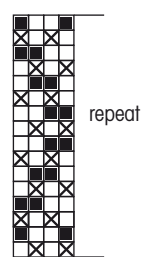
Diamond pattern:

2 ja 4 tabby weft = ground
1 ja 4 pattern weft = pattern
1 ja 3 ground
1 ja 2 pattern
2 ja 4 ground
2 ja 3 pattern
1 ja 3 ground
3 ja 4 pattern
2 ja 4 ground
3 ja 4 pattern
1 ja 3 ground
2 ja 3 pattern
2 ja 4 ground
1 ja 2 pattern
1 ja 3 ground
1 ja 4 pattern
Repeat from the beginning.

× = ground weft, plain weave
■ = pattern weft



Zigzag pattern



Diamond pattern

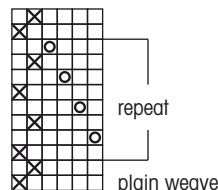


The bottom and the side of the basket are woven with paper ribbon and paper yarn

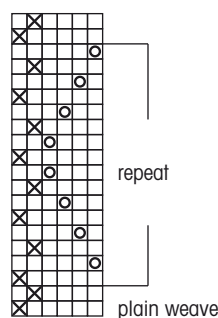
DRAFT FOR THE COUNTERMARCH LOOM

Details of the warp are on page 11.

NARROW BASKET AND TABLE RUNNER

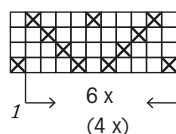


LOWER BASKET



Treading

× = ground weft: thin paper yarn or paper yarn
○ = pattern weft: flat paper ribbon doubled



6 x 10 = 60 threads (narrower 4 x 10 = 40 thr.)

Narrow basket

(The higher) Circumference 33 cm and height 19 cm
The woven length of fabric 35 cm, loose the warp when measuring.
Woven into a warp 20,3 cm wide.

Weave the fabric with a diamond pattern using the thin paper yarn / paper yarn as the ground weft and the double flat paper ribbon as the pattern weft. Wash carefully by hand 30°C.

AMOUNT OF WEFT YARN NEEDED

The pattern weft

Raffia Multi paper yarn (flat paper ribbon), Lankava
100% Recyclable wood fiber (cellulose / Rayon) 35 g = n. 80 m,
05 space dyed green
07 space dyed grey / blue
08 space dyed blue / lilac
14 g in total

The ground weft (plain-weave weft)

Paper yarn Nm 1,65
100 g = 180 m, Lappajärven Värjäämö
16 gray 5 g

The Lower basket

(With fringe) Circumference 51 cm and height 14 cm + loops
The woven length of fabric 54 cm, loose the warp when measuring.
Woven into a warp 13,7 cm wide.

Leave loops of different heights of the paper ribbon on one edge of the fabric. Weave the plain-weave weft as usual to the edge to keep the edge tight. Wash carefully by hand 30°C.

AMOUNT OF WEFT YARN NEEDED

The pattern weft

Raffia Multi paper yarn (flat paper ribbon), Lankava
100% Recyclable wood fiber (cellulose / Rayon) 35 g = n. 80 m,
05 space dyed green
07 space dyed grey / blue
17 g in total

The ground weft

Paper yarn Nm 1,65
100 g = 180 m, Lappajärven Värjäämö
16 grey 5 g
and
Thin paper yarn 0,8
200 g = 175 m, Lappajärven Värjäämö
yellow
orange
6 g in total

Small table runner

Finished size 18,5 x 30 cm + fringe á 9 cm
Woven into a warp 20,3 cm wide.

Leave 9 cm for the fringe on both ends. Weave the table runner according to the treadling instructions using the gray paper yarn as the plain-weave weft and the double flat paper ribbon as the pattern weft. The woven length is 35 cm. Wash carefully by hand 30°C.

AMOUNT OF WEFT YARN NEEDED

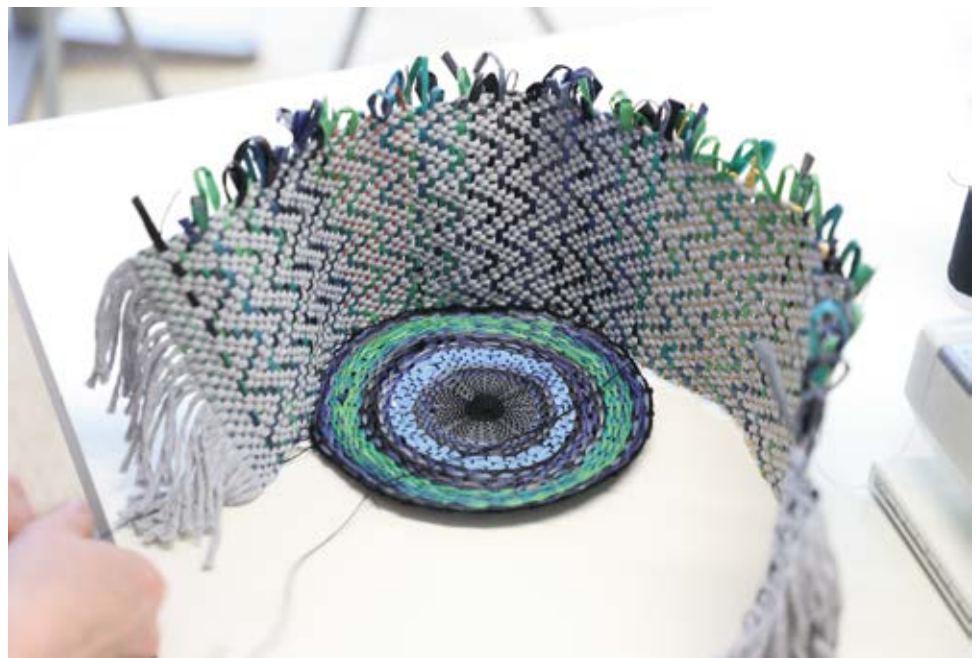
Paper yarn Nm 1,65
100 g = 180 m, Lappajärven Värjäämö
16 gray 4 g

Raffia Multi paper yarn (flat paper ribbon), Lankava
100% Recyclable wood fiber (cellulose / Rayon)
35 g = n. 80 m,
01 rainbow 10 g



Leave the fringe from the mop yarn warp and sew a straight stitch to the end of the fabric. The fabric does not unravel, and the fringe remain on the edge of the basket as a decoration.

EASY WAY TO FINISH THE ENDS



Sewing baskets

Sew a straight stitch to the end of the fabric with a sewing machine. Press the fabric through the damp ironing cloth. Fasten the fabric with pins from one edge to the bottom piece, overlap the ends of the fabrics. The circumference of the basket can be adjusted by increasing or decreasing the overlapping. Sew the fabric by hand to the bottom using warp yarn or other strong thread of appropriate colour.

Finally, sew the ends of the edge fabric of the basket together with a sewing thread of appropriate colour separately from the outside and inside of the basket. The fringe can also be comb open and cut shorter.



Rep table runner

Finished size 35 x 120 cm

Lake Saimaa 3729

The warp Cotton Yarn 8/2 (8/2 Bomull), tex 76x2
1 kg = approx. 6800 m, Garnhuset i Kinna

Warp width 35,4 cm
density 20 threads/cm
number of warp ends 708
length 10 m (about 8 m woven fabric)

Reed 50/4
Weave Warp-faced rep

AMOUNT OF WEFT YARN NEEDED

Minibom String Yarn

1 kg = n. 900 m, Garnhuset i Kinna

white 126 g

Cotton Yarn 16/2, tex 38x2

1 kg = approx. 13000 m

bleached (= white) 13 g

FINISHING

Sew the ends with 3-step zigzag stitches and cut the pieces apart. Stem the fabrics. Sew the borders by hand or machine stitch. The finished border width is 1 cm.

Wash by hand the first time 40-60°C, do not twist or fold. In the future, you can also wash the table runner in the machine. Stem or press the table runner after washing.

INSTRUCTIONS FOR WINDING THE WARP

Wind the warp with four ends. (thr. = threads)

4 x 2 threads dark blue 8286 + 2 threads bleached (= 16 threads)

4 x 1 thr. dark blue + 1 thr. bleached + 1 thr. blue 8285
+ 1 thr. light grey 8278 (= 16 threads)

12 x 2 thr. blue + 2 thr. light grey (= 48 threads)

4 x 1 thr. light grey + 1 thr. blue + 1 thr. bleached
+ 1 thr. dark blue (= 16 threads)

4 x 2 thr. bleached + 2 thr. dark blue (= 16 threads)

12 threads bleached

4 x 2 thr. bleached + 2 thr. dark blue (= 16 threads)

4 x 1 thr. light grey + 1 thr. blue + 1 thr. bleached
+ 1 thr. dark blue (= 16 threads)

12 x 2 thr. blue + 2 thr. light grey (= 48 threads)

4 x 1 thr. dark blue + 1 thr. bleached + 1 thr. blue
+ 1 thr. light grey (= 16 threads)

4 x 2 threads dark blue + 2 threads bleached (= 16 threads)

Repeat 3 x from the beginning.

AMOUNT OF WARP YARN NEEDED, length 10 m

Cotton Yarn 8/2, tex 76x2

1 kg = approx. 6800 m, Garnhuset i Kinna

bleached (= white) 255 g

8278 light grey 50 g

8286 dark blue 205 g

8285 blue 275 g = 985 g in total.

WEAVING INSTRUCTIONS

For the border, weave 3,5 cm with the bleached cotton yarn 16/2.

Weave the runners according to the treadling instructions using the white Minibom String Yarn as the bulky weft and the bleached cotton yarn 16/2 as the fine weft.

The height of 1 square is 7 bulky weft + fine yarns = 2,7 cm. The woven length is 135 + borders á 3,5 cm.

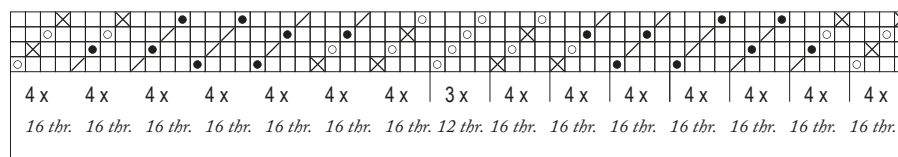
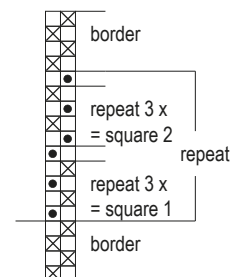
You can also weave the fabric using the Mop Yarn as the bulky weft and the cotton yarn 8/2 as the fine weft. This land table runner on the next page is woven with these weft yarns.

Treading

- × = fine weft
- = bulky weft

Threading

- × = dark blue 8286
- = blue 8285
- / = light grey 8278
- = bleached (= white)



3 x

3 x 236 = 708 threads





INSTRUCTIONS FOR WINDING THE WARP

Wind the warp with four ends. (thr. = threads)

- 4 x 2 thr. dark green 8294 + 2 thr. bleached (= 16 threads)
 - 4 x 1 thr. dark green + 1 thr. bleached + 1 thr. green 8277 + 1 thr. light grey 8278 (= 16 threads)
 - 4 x 2 thr. green + 2 thr. light grey (= 16 threads)
 - 4 x 1 thr. green + 1 thr. blue 8281 + 2 thr. light grey (= 16 thr.)
 - 4 x 2 thr. blue + 2 thr. light grey (= 16 threads)
 - 4 x 1 thr. light grey + 1 thr. blue + 1 thr. bleached + 1 thr. dark blue 8283 (= 16 threads)
 - 4 x 2 thr. bleached + 2 thr. dark blue (= 16 threads)
 - 12 threads bleached
 - 4 x 2 thr. bleached + 2 thr. dark blue (= 16 threads)
 - 4 x 1 thr. light grey + 1 thr. blue + 1 thr. bleached + 1 thr. dark blue (= 16 threads)
 - 4 x 2 thr. blue + 2 thr. light grey (= 16 threads)
 - 4 x 1 thr. blue + 1 thr. green + 2 thr. light grey (= 16 thr.)
 - 4 x 2 thr. green + 2 thr. light grey (= 16 threads)
 - 4 x 1 thr. dark green + 1 thr. bleached + 1 thr. green + 1 thr. light grey (= 16 threads)
 - 4 x 2 thr. dark green + 2 thr. bleached (= 16 threads)
- Repeat 3 x from the beginning.

AMOUNT OF WARP YARN NEEDED, length 10 m

Cotton Yarn 8/2 (8/2 Bomull), tex 76x2

1 kg = approx. 6800 m, Garnhuset i Kinna

bleached (=white) 275 g

8278 light grey 295 g

8294 dark green 110 g

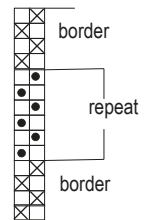
8277 green 150 g

8283 dark blue 110 g

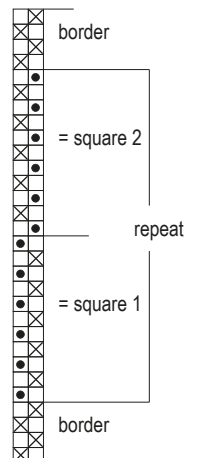
8281 blue 150 g

= 1090 g in total

STRIPED
REP RUNNER



CHECKERED
REP RUNNER



This Land 3730

The warp Cotton Yarn 8/2 (8/2 Bomull), tex 76x2
1 kg = approx. 6800 m, Garnhuset i Kinna

Warp width 35,4 cm
density 20 threads/cm
number of warp ends 708
length 10 m (about 8 m woven fabric)

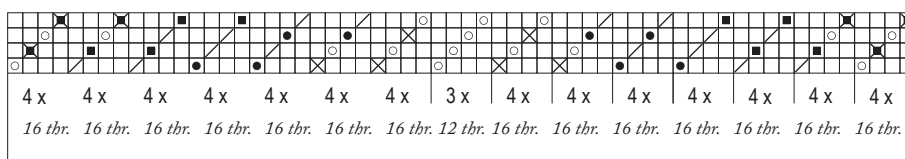
Reed 50/4
Weave Warp-faced rep

Treading

- × = fine weft
- = bulky weft

Threading

- / = light grey 8278
- = bleached (=white)
- × = dark green 8294
- = green 8277
- × = dark blue 8283
- = blue 8281



3 x

3 x 236 = 708 threads

Striped rep runner

Finished size 34 x 122 cm

For the border, weave 3,5 cm with the bleached cotton yarn 8/2. Weave the runner with light blue Lilli Tube Yarn. The density of weave is 11 picks/6 cm. The woven length is 130 cm + borders.

AMOUNT OF WEFT YARN NEEDED

Lilli Tube Yarn, 80 % recycled cotton, 20 % Polyester

1 kg = approx. 220 m, Ø 7 mm, Lankava

light blue 330 g

For the borders Cotton Yarn 8/2 bleached 3 g

FINISHING

Sew the ends with 3-step zigzag stitches and cut the pieces apart. Stem the fabrics. Sew the borders by hand or machine stitch. The finished border width is 1 cm.

Wash by hand the first time 40-60°C, do not twist or fold. In the future, you can also wash the table runner in the machine. Stem or press the table runner after washing.



Checkered rep runner

Finished size 35 x 121 cm

WEAVING INSTRUCTIONS

For the border, weave 3,5 cm with the bleached cotton yarn 8/2. Weave the runner according to the treadling instructions using the light grey Minimop Cotton Twine as the bulky weft and the bleached cotton yarn 8/2 as the fine weft. The height of 1 square is 6 bulky weft + fine yarns = 2,5 cm. The woven length is 135 + boarders.

AMOUNT OF WEFT YARN NEEDED

Minimop Cotton Twine, 80 % recycled cotton, 20 % Polyester

1 kg = approx. 700 m, Ø 2,5 mm, Lankava

light grey 160 g

Cotton Yarn 8/2, tex 76x2

1 kg = approx. 6800 m, the same quality as in the warp

bleached 20 g



TIP

The warp threads of the dense rep weave remain in their own places, as you also wind the warp through the cross-sticks on the warp beam. The cross-sticks keep the warp ends in groups of four threads. Instead, wound only through the raddle, pass 20 threads at the same time from one dent to the warp beam (when one dent is 1 cm).





Three Stripes 3731

A RUG WITH THREE DIFFERENT COLOUR BLOCKS SIDE BY SIDE

Weave all the colours into to the rug following the style of Kirsi's rag rug or use only one colour but different shades of it, as in the Shades of blue rug on the page 24.

It is easy to get rid of all carpet rag leftovers, including the shortest t-shirt yarns and tube yarns. And if there will be some of the warp left at the end, you can weave a soft rug with miscellaneous yarns. Combine knitting and crochet yarns into one thick weft yarn. In this warp you can recycle all kind of yarns and materials!



DESIGN OF PATTERN **Marjatta Hirvi**
 WEAVERS and COLOUR DESIGN **Kirsi Reilin, Maarit Windt, Marjatta Hirvi**

Finished sizes

Kirsi's rag rug 78 x 186 cm

Shades of blue rug 77 x 177 cm

Yarn Mix rug with tassels 78 x 59 cm

Maarit's pattern for leftover rug yarns 79 x 64 cm

WEAVING INSTRUCTIONS

There are three different colour sections side by side on the rug surface, and it is woven with three shuttles: The weft thrown with shuttle 1 comes up in one section of the rug surface, the weft thrown with shuttle 2 on the second section and the weft shot with shuttle 3 on the third section of the rug surface. Throw the shuttles from opposing sides, the directions of the shuttling are in the treadling instructions. 3 shots of the weft increase the fabric as one weft row. On the opposite side the wefts interlace, and colours mix.

With this tie-up the weft thrown in the shed with the first pattern treadle on left comes up on the surface of the rug on the right edge, the weft thrown with the second treadle comes up in the middle of the rug and the weft thrown with the third treadle comes up on the left edge of the rug.

Insert the weft at an angle large enough and draw the weft into curves. The weave is inflexible, and it may cause troubles if the width of the cloth is reduced too much. If necessary, test if it is possible to adjust the length of the temple slightly narrower. Be careful, making the width of the cloth too narrow may cause broken warp ends near the fell of the cloth and damage to the reed.

NB The rug ends unravel easily if not supported! Weave few centimetres with an extra weft to support at both ends of the rug. Weave the intervals between the rugs (left for fringes) using warp sticks or heavy carboard strips.



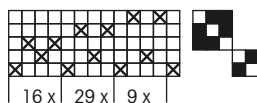
Treadling:

- = colour 1
- × = colour 2
- = colour 3
- / = press two treadles at a time

* change the colours

Threading:

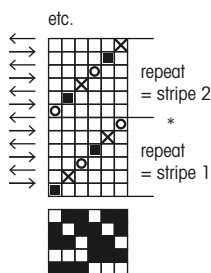
Double 2 edge threads on both sides



64 116 36 1 = 217 ends in total

ALTERNATIVE tie-up

(press one treadle at a time)



The warp **Liina Cotton Twine 12 ply, unbleached**
 tex 30x12, 1 kg = approx. 2 560 m, Suomen Lanka
Warp width 86,8 cm
 density 2,5 threads/cm
 number of warp ends 217+4
 length 6,8 m
 amount of warp yarn needed 585 g = 86 g/1 m

Reed 25/1
Weave Samitum (Kuvikas)

Weave by pressing down two treadles at the same time. Use the alternative tie-up if you want to weave by pressing only one treadle at a time as usually. The threading is the same in both ways.



Kirsi's rag rug

Finished size 78 x 186 cm

WEAVING INSTRUCTIONS

Leave around 15 cm of the warp for the fringe on the both ends. Start and finish the rug with an extra weft to support the ends. Weave the rug with rag strips and double mop yarn. Cut the cotton sheet fabric into strips width of 2 cm. Throw three different colours in a row according to the treadling order. Weave 6 cm with same three colours = 12 times 3 rows of three wefts. Change the colours always at the end of the repeat (finish the wefts during the three last rows of the repeat and start the new wefts in new colours during the three first picks of the repeat). The throwing directions remain in the right order and the edge builds up neatly. Weave some colour sections twice as high as normally to break regularity. Use double mop yarn here and there for the entire length of the rug.

The wefts were in shades of blue, turquoise, red and lilac in this rug. The density of weave was approximately 6 picks/1 cm. The woven length of the rug was 196 cm.

FINISHING

As you tie the knots, undo the extra weft. Tie the warp threads 2 + 2 with tight square knot or weaver's knot. Finish all the threads of the end. Make another row of knots approx. 2 cm away with overhand knots: Take half of the knot threads (2 threads), skip one knot and take half (2 threads) of the threads if the next knot and connect them with a overhand knot. Cross all the threads in the same way. Cut the fringe to an even length. See more instructions on page 29.



The rug is woven with three shuttles. Each of the three adjacent pattern sections have an own shuttle, of which weft shows up in its own section but dives underneath and interlace there with other wefts of two pattern sections. Weft colours are mixed in pattern section on the reverse side of the rug. Shuttles are thrown alternately from contrary sides same way as in the ordinary Finnish rag rugs. The shed is opened by pressing two treadles at the same time.

AMOUNT OF WEFT YARN NEEDED

Rug strips from cotton fabrics, width of one strip is 20 mm.
Reds / lilacs 735 g, greens, turquoises 855 g and blues 750 g.
2,34 kg in total.

Minimop Cotton Twine
1 kg = n. 700 m, Ø 2,5 mm, Lankava
76 blue 325 g, 59 mint 375 g ja
53 reddish beige 330 g
1,03 kg in total.







Shades of blue rug

Finished size 77 x 177 cm

The blue rug is woven with t-shirt yarns and tube yarns to achieve different kinds of effects and tones in the colour checks. We took two outmost ends away from the threading on the left edge to have wefts in similar action on both selvages.

Weave the rug with different shades of one colour. Leave around 17 cm for the cross fringe. Weave some scrap weft into the warp on both ends of the rug to support. Start and end the rug with 6 throws of the warp yarn. Weave stripes 9 cm high with three different colours. Weave some of the colour checks twice as high as normally. Occasionally divide the check in two halves, start with one colour and change to another at the middle of the check. Change the colours always at the end of the repeat (finish with three last pick and start with three first pick of the repeat). Use different kind of materials and colour shades evenly over the entire length of the rug.

Make a note of where each colour and material change are made while weaving. By following this note you can decide what colours and materials to use in next checks to give a smooth look on the rug.

FINISHING

Knot the first warp threads 2 + 2 with a tight weaver's knot. As you tie the knots, undo the scrap yarn. Knot a lattice fringe according to the instructions on page 29 or just finish with overhand knots.



Tip!

Insert the weft at an angle and draw down into a series of curves across the warp to prevent excess draw in. This blue pattern is designed to vary in different shades of one colour. This gives you an opportunity to use unevenly dyed rug yarns. Also, the strength of the weft yarns can vary. If in some check the weft is not strong enough to cover the other wefts, only the texture and hue of the colour change at that point.

This pattern is perfect for uneven and irregularly dyed rug yarns!

AMOUNT OF WEFT YARN NEEDED

Eko Tube Yarn, recycled cotton (flat, 10 mm wide) 1 kg = approx. 270 m marine blue 610 g and denim blue 530 g.

Lilli Tube Yarn, recycled cotton (round, 7 mm wide) 1 kg = approx. 220 m marine blue 560 g.

T-shirt Yarn, dyed smoky blue 680 g, blue 780 g ja dark blue, thicker quality 370 g.

3,53 kg in total







Tassel frindge!

Hide warp threads inside colorful fringes. For instructions, see page 9.



Add a dark stripe for attention!

Weave one pick in the middle of some colour stripes with a black jute cord or similar thick thread clearly distinct from other weft yarns. The bright colour stripe highlights otherwise rather indistinctive checks.

Take a thread twice as long as the width of the warp with some extra for overlapping and curving.

- Throw the weft in the shed and leave the ends hanging out from both edges of the warp. Wrap the end around the selvage warp thread at both edges and pass the ends back into the same shed. Overlap the tapered weft ends for around 10 – 15 cm. Beat the weft in.



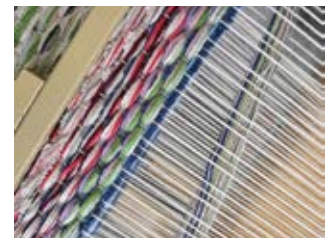
Place the rug next to the bed or sofa and place your feet on its soft and warm surface.

Yarn Mix rug with tassels

Finished size 78 x 59 cm

The woven length 65 cm.

Gather all yarns left from weaving, knitting, and crocheting. Mix different kinds of threads into one multiple weft yarn. Arrange the bobbins, cones, and balls of strings in a way that they can come off without tangling to each other. Take the ends of the yarns coming into a one weft and wind on the shuttle. First, try what is the suitable thickness of the multiple yarn. Make all the yarn mixtures in approximately same thickness. Remember to weave some extra yarn at both ends to support the rug!



AMOUNT OF WEFT YARN NEEDED

All kinds of wool, cotton, and blended yarns approx. 1,1, kg.

Maarit's pattern for leftover rug yarns

Finished size 79 x 60 cm

You can use all the shortest pieces of rug yarn in this rug pattern!

The durable and sturdy rug is ideal for example in the hallway. Weave varying height colour stripes using every bit of rug yarn to the end. The purpose is to use off the rug yarns for the rest, so combine colours you don't normally use in the same weave. You will be surprised by the beautiful result.

Tie the warp threads 2 + 2 with square knot. Make overhand knots and cut the fringe to an even length.

See the tips for joining the wefts on the next page.



AMOUNT OF WEFT YARN NEEDED

A total of approx. 1,5 kg t-shirt yarns and tube yarns.



Recycle all your rug yarn leftovers! Divide the different colours into their own baskets. Admire the bundle of colours and start your pleasant weaving moments.



The colours of the wefts are mixed on the reverse side of the rug.

Tips for joining the wefts

Join the rug yarns by hiding the tails into each other to get a neat and smooth rug. There are a lot of joints when weaving with short lengths of weft yarns as in the rug on page 27. The colour of the weft yarns is not changed at the edges as usually in Finnish rag rugs, but the different colour wefts are joined in the middle of the fabric.

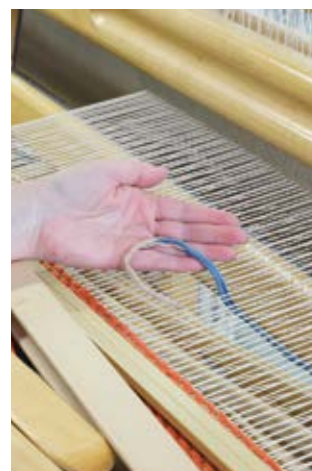
Make the joining in a check where the wefts interlace mainly under the fabric and colours are mixed.

JOIN TWO T-SHIRT YARNS

Taper the ends of the t-shirt yarns. Throw wefts in the shed and overlap the ends around 10 – 13 cm. Spread the end of the weft and wrap it around the end of the other weft. Make sure the weft is drawn up in a proper arc and beat the weft in place.

JOIN A T-SHIRT YARN AND A TUBE YARN

Taper the ends of the yarns. Pull the end of the t-shirt yarn into the tube yarn with a needle or a cord threader. If all the yarn doesn't fit within the tube yarn, cut the extra off to make a finished joint. Straighten the weft into the shed and draw up in an arc. Beat the weft in place.



JOIN TWO TUBE YARNS

Taper the ends of the yarns. Pull the end of the one weft into the other weft with a cord threader or needle. Do the same with the other weft end. See the picture below. If there are some strips of fabric outside the joint, cut them off to make a finished joint. Straighten the weft into the shed and draw up in an arc. Beat the weft in place.



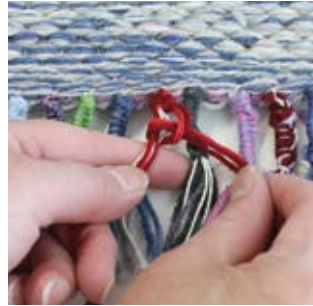
Yan Mix rug, page 26
 Shades of blue rug, page 24
 Kirsi's rag rug, page 22

Finish with fringes



HOW TO MAKE TASSELS TO THE YARN MIX RUG

1. Tie the warp threads 2 + 2 using weaver's knots.
2. Take some of the yarns used as a weft in the rug and cut them to about of 35-40 cm in length. Place these additional threads in the middle of the weaver's knot and tie a knot with warp threads. Leave the end making the loops longer.
3. Combine warp threads and half of the additional threads in the other hand. Make loops around the threads with the other half of the additional threads with the other hand.
4. When the tassel is 3 cm long, finish it by knotting one warp thread and one of the threads of the loops with a tight knot together. Make another knot. Finally, cut the ends of the tassels to the same length.



LATTICE FRINGE

Undo the extra weft at the end of the rug while tying the warp threads. If the end of the rug unravels easily, start at the same time at both sides and proceed to the centre.

Tie the warp threads 2 + 2 using weaver's knots. Make another row of knots approx. 2 cm away with overhand knots: Take half of the knot yarns (2 threads), skip one knot and take half of the knot yarns (2 threads) of the next knot and connect them with an overhand knot. Cross all the warp threads in this same way. You can make

the third knot row in the same way. Cut the fringe to an even length.

NB Leave longer warp ends as normally for tying the lattice fringe.





DESIGN OF PATTERN Marjatta Hirvi WEAVER and KNITS Kirsi Vakkari

Weave into the same warp
 Poncho width 82 cm length 65 cm
 Green twill-and-tabby scarf 59 x 146 cm, page 34

Lupine stripes

3732

The warp Veera Comb Wool Yarn
 off-white 416
 tex 55 x 2, 100 g = n. 900 m, Wetterhoff
 Warp width 68 cm
 density 6 lankaa/cm
 number of warp ends 408
 length 4,35 m
 amount of yarn needed 191 g

Reed 60/1
 Weave Plain weave and twill combined

Warp length
 Poncho 190 cm
 Scarf 160 cm
 350 cm in total
 + 10 % shrinkage 35 cm
 + loom waste 50 cm
 435 cm in total

Tip!
 Poncho fits beautifully on the shoulders when you sew a knitted piece between the front and back pieces.

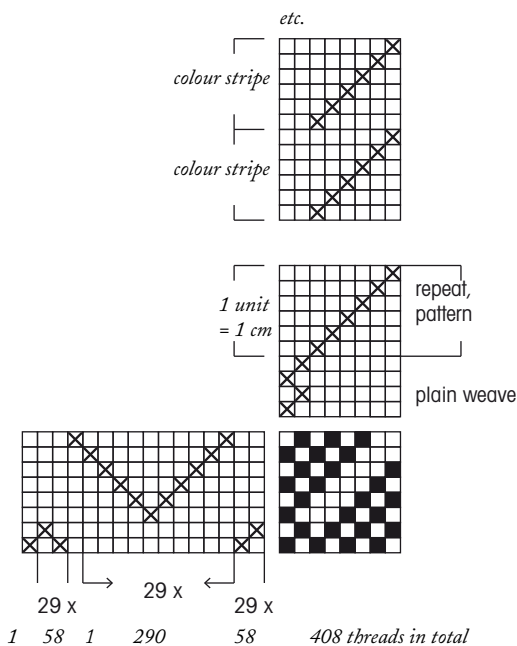


PLANT DYED YARNS FOR THE STRIPES

The poncho is woven with thin alpaca yarn. Yarns for the stripes on the front are the same yarn but dyed with plants. A grey and an off-white yarn were in the same dye pot to have lighter and darker shades of same colour. We used a lot of dyeing plants in relation to the amount of yarn. The yarns were mordanted with alum. Dyeing temperature was approx. 70°C and dyeing time approx. 1 hour. The threads have been left in the colour dye until the next morning.

- Green and light green – flowers of Lupine
- Yellow and light yellow (greenish) – Lady's Mantle
- Brown and light brown – Fern

Fern and Lady's Mantle have been picked from our own backyard and Lupine flowers from a nearby fallowed field. There is no need to have a large amount of dyeing plant as the amount of yarn to be dyed is small. The yarns were wound into skeins of about 10 grams and dyed only three or four skeins at a time. The 8-liter pot was full of dyeing plants.



Poncho

Width of the front piece is 82 cm; width of the back piece is 82 cm and the length of the poncho (height) is 65 cm.

WEAVING INSTRUCTIONS

The density of the weave is 6 picks/cm. Join the wefts only at the edge of the fabric and taper the ends (cut the other string of the thread away). In the colour stripes, always change the colour on the same edge of the fabric and use that edge as the hem of the poncho. The fabric is sparse and easily damaged. Cover the woven fabric with a sheet fabric or similar for protection. When the woven fabric reaches the cloth beam, place corrugated board between the first layers. Weave 1 cm between the front and back pieces for finishing.

Front piece:

13 cm plain weave, white (includes the border 3 cm)

15 cm pattern, white (= repeat 15 x)

*

Colour stripes, pattern (39 cm):

1 cm light green (= 1 repeat)

1 cm green

1 cm light green

1 cm light yellow

1 cm yellow

1 cm light yellow

1 cm light brown

1 cm brown

1 cm light brown

1 cm light yellow

1 cm yellow

1 cm light yellow

Repeat 3 x from the beginning of the stripes

1 cm light green

1 cm green

1 cm light green

*

15 cm pattern, white

13 cm plain weave, white (includes the border 3 cm)

1 cm plain weave for the finishing, white

Back piece:

Weave the back with white yarn. Note! Weave the twill patterned section to the same height as the patterned section of the front piece.

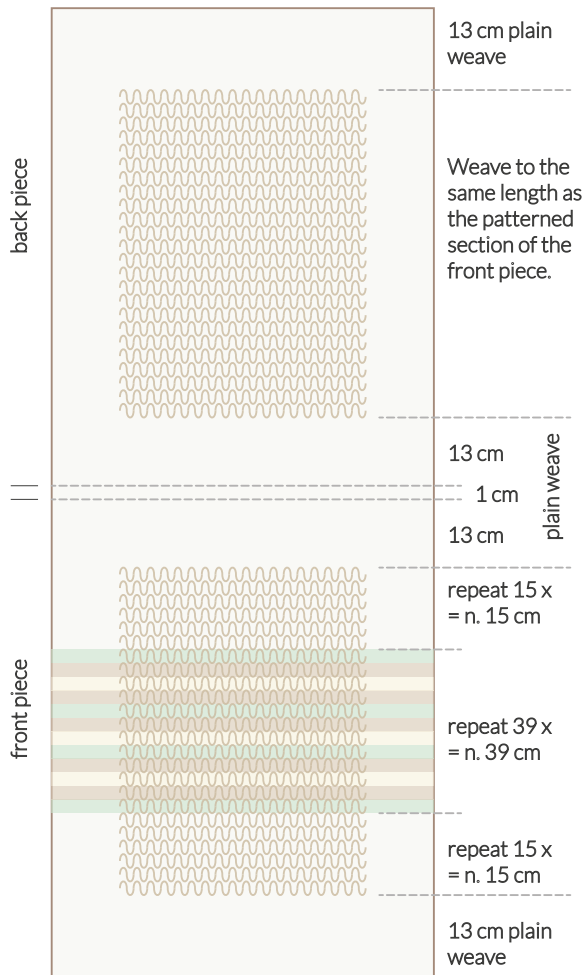
13 cm plain weave

69 cm pattern / or the same length as the patterned section of the front piece

13 cm plain weave

The woven length of the fabric is 190 cm.

The size of the fabric when taken off the loom 65 x 184 cm and washed and steamed 64 x 173 cm.



AMOUNT OF WEFT YARN NEEDED

Alpaca 1, Eco Line 100 %
 50 g = n. 400 m, Isager
 off-white 74 g
 Dyed yarns (the same Alpaca 1)
 green 2 g (approx. 18 m)
 light green 5 g (approx. 36 m)
 yellow 4 g (approx. 26 m)
 light yellow 6 g (approx. 52 m)
 brown 2 g (approx. 13 m)
 light brown 4 g (approx. 26 m)
 97 g in total

TIP If you want a denser fabric, use the weft thread doubled.

Try thin wool, silk-wool, and alpaca yarns for the weft. A good and easy choice is to weave with the same comb wool yarn from which the warp was wound. You can also dye Veera Comb wool yarn, as well as silk-wool yarn of the same strength. Now make your plans ready and prepare the yarns for dyeing!

Knitting pattern for poncho shoulder pieces



FINISHING THE FABRICS

Before cutting apart the poncho and scarf fabrics, sew a 3-step zigzag stitch at the end of pieces. Sew the other stitch next to it so that the stitches overlap slightly. Cut the pieces apart and check that the fabric doesn't unravel. Immerse the fabrics in hand-warm water with a little wool detergent. Handle gently. Rinse and dry the fabric as straight as possible. Steam the fabrics on both sides.

FINISHING THE PONCHO

Before cutting apart, sew the poncho's front and back pieces' ends twice with a 3-step zigzag stitch. Fold and press the borders. The inside allowance is approx. 7 mm and the width of the border is approx. 10 mm. Sew the border by hand using the same yarn as in the warp or weft. Measure 26 cm for the neckline in the middle of the front and back pieces, i.e. to the edges of the woven fabric. Measure the length of the shoulder from the edge of the neck to the end of the fabric (border) and knit the shoulder pieces of its length, here the length was 28 cm. Sew the knitted shoulder pieces overlapping the front and back pieces so that the woven fabric remains on top i.e. on the right side and knitted under. Gently press through the fabric.

KNITTED SHOULDER PIECES

Finished size 4 x 28 cm, 2 pcs

The front and the back are joined with knitted pieces.

The width of the neckline is 26 cm and the length of the knitted piece is same as the length from the edge of the neckline to the edge of the poncho. Here the length was 28 cm.

- Knitting needles size 4 mm

Cast on 73 sts. (Slip the first edge stitch on every row)

Row 1: Purl all sts

Row 2: Knit all sts

Row 3: Purl all sts

Row 4: Knit 3 sts, *next 5 sts extended as follows: Star purl st and wind yarn over needle 3 times and pass the needle through the st, knit 1*

Repeat * - * 11 times, purl 4 last sts on the needle.

Row 5: Purl 4 sts *next 5 sts as follows: Take the extended sts on the needle and skip the two other yarns: you have now one extended sts on the needle. Release all 5 sts in the same way. Pull the yarn from the back of the extended st from left in front of piece and wind yarn over twice around the st. Purl 1 st.

Row 6: Knit 4 *purl 5 sts, knit 1 st

Row 7: Purl all sts

Row 8: Knit all sts

Row 9: Purl all sts

Row 10: Cast off.



Finished size 59 x 146 cm

Twill-and-tabby Scarf 3733

Details of the warp on the page 31.

WEAVING INSTRUCTIONS

Weave the scarf with the light green Veera Comb Wool yarn. Weave 13 cm plain weave at the beginning and the end of the scarf. Weave in the middle of the scarf 143 cm according to the treadling instructions. The density of the weave is 6 picks/cm. Join the weft only on the edge, taper the end of the thread (cut off one strand). The woven length is approx. 170 cm. Measures when taken off the loom 61 x 160 cm. After washing and steaming 59 x 154 cm.

AMOUNT OF WEFT YARN NEEDED

Veera Comb Wool Yarn, tex 55x3
 100 g = approx. 900 m, Wetterhoff
 435 light green 75 g

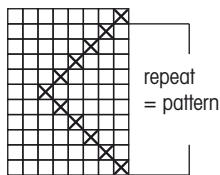
FINISHING

Sew the scarf ends with 3-step zigzag stitches and cut the pieces apart. Make sure the end doesn't unravel. Wet the fabric in lukewarm water, put in a few drops washing detergent (wool). Move carefully. Rinse and dry as straight as possible. Press or steam carefully from both sides.

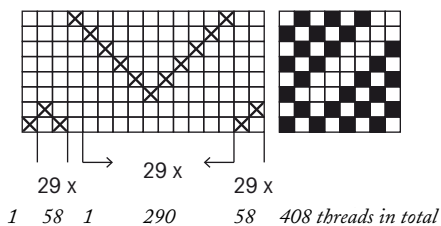
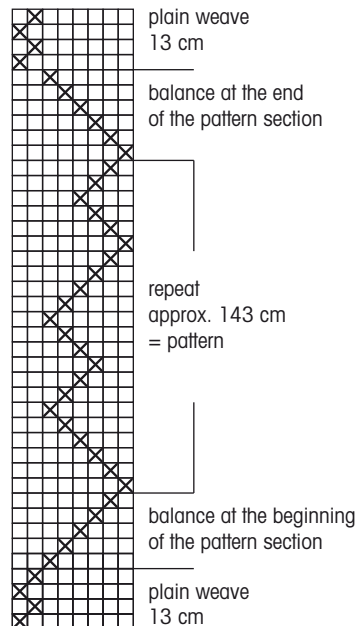
Turn the hems and press the folds. The inside allowance is approx. 8 mm and the width of the finished hem is approx. 12 mm. Sew the hems with the same thread used for the warp or for the weft.



Protect the woven fabric while weaving! A clearer pattern appears to the reverse side of the fabric when woven with these colours in the warp and the weft.



ALTERNATIVE PATTERN
 The white sampel piece is woven with this treadling. See picture on the right.







DESIGN OF PATTERN **Traditional pattern** WEAVER **Maija Aapro, Välijoki**

Finished size 75 x 210 cm

The Narrow Love's Path 3734



The warp 15-ply Liina Cotton Twine, tex 30x15,
1 kg = n. 2020 m, Suomen Lanka
Warp width 86 cm
density 2,5 threads/cm
number of warp ends 215 + 4
amount of warp yarn needed 105 g / 1 m
Reed 25/1
Weave A Traditional Finnish pattern for rugs

WEAVING INSTRUCTIONS

Throw the three wefts of different colour according to the treading order. The multicoloured wefts are rag rug strips cut from the cotton sheet fabrics. The other wefts are t-shirt yarns. Weave the stripes around 12 cm high.

- 14 cm mint + dark red + multicoloured green
- 11 cm lilac + dark red + multicoloured turquoise
- 14 cm orange + dark red + multicoloured green
- 15 cm multicoloured rose + dark red + mint
- 11 cm apricot + dark red + multicoloured (many colours)
- 11 cm melon + dark red + multicoloured beige

Repeat 3 x from the beginning.

The woven length is approx. 225 cm.

AMOUNT OF WEFT YARN NEEDED for one rug

T-shirt Yarn, dyed

dark red approx. 1,2 kg

other colours all together approx. 1,2 kg

Rag rug strips of cotton sheet fabric approx. 1,0 kg

FINISHING

Tie the warp ends with overhand knots.

Threading:

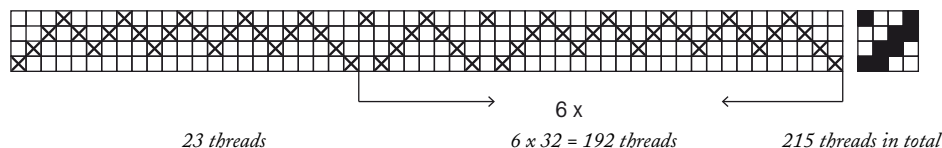
Double 2 edge threads on both sides

Treading

× = colour 1

○ = colour 2

□ = colour 3



The traditional Finnish rag rug patterns have evolved over the years to be beautiful, practical and durable. So it's no wonder they're still popular.



The old rag rug:

Warp ends 271 + 4 (9 x 28 = 252 + balance 19 threads), density 3 ends/cm, reed 30/1, width 90,3 cm. 12-ply cotton twine, 1 kg = 2560 m.

The pattern was taken from this old rug, which was woven only with a rag rug strips. The threading has been changed by adding length to the repeats (one unit 4 thread) forming a straight stripe. There were only four repeats of unit of four threads in the old rug, but there are five of them in the new rug. The warp was also denser.

A traditional
rag rug pattern

The Weaver's Pick Digital

The Weaver's Pick is now also in a digital form. Read one article at a time or browse the whole online magazine. The digital form is included in The Weaver's Pick subscription.

HOW TO READ THE ONLINE MAGAZINE

After you have completed your subscription you get your own account. Go to the page My account on mallikerta.fi website and give your Username and Password. After that you can go to the page Magazine and read all the articles and the online magazine.

- You get your own Username and Password after the subscription in an email.




- There is a link to the Online magazine in every article. On mobile devices the link is at the end of the article and on the computer screen on the right side.
- You can print every pattern, the print button is in the article.


Home / Patterns

Patterns


Showing 1 - 4 of 30 results



Christmas Carol 3708
1,50 €



Patchwork rug 3707
3,50 €



Pulse rug 3706
1,50 €

Do you need only a specific pattern?
Visit the Patterns site

At www.mallikerta.fi you'll find a new Pattern library where you can buy single patterns. At this moment there are patterns from the latest issues, but we are adding favorite patterns from the past issues.

Corrections

The Weaver's Pick issue 2/2020, page 35
Old Rose Charm 3725 Poppana table runner

The density of the warp is 4 threads/cm, not 2,5 threads/cm.

Weaver's Library

KANKAANRAKENTAJAN OPAS

This guide (in Finnish) for dressing a loom is a popular textbook on the practical work involved in weaving. The guide includes clear instructions for winding the warp, beaming and tying up the treadles, and tips for actual weaving. 52 pages. A basic guide to keep by your loom. Price €15.80



KANKAANRAKENTAJAN SIDOSOPPI

This guidebook (in Finnish) on the theory of fabric structure includes the basics of fabric structure and the most common weave types for floor looms. 68 pages. Price €18.90



LAPPAJÄRVEN VÄRJÄÄMÖ OY

Aittoa tekemisen iloa ja kotimaista värjäysosaamista jo vuodesta 1979!

Materiaalit kudontaan, askarteluun ja käsitöihin



www.filona.fi

info@filona.fi, puh 040 838 5449, Lappajärvi



*In the next
issue..*

Soft wool yarn rugs are waiting to be laid out on the floor. Large rugs are filled with patterns from edge to edge.

*The winter issue 4/2020
is out in November*

www.theweaverspick.com
www.mallikerta.fi

On our website, you can order single issues or subscribe to the full volume of the Weaver's Pick magazine, or order back issues from previous years. If you wish, you can also order the guidebooks (in Finnish).

Please make sure to let us know your new address. You can contact us by sending an email, via the website or by using the form.

SUBSCRIPTION PRICES

Full year 2021:
Europe 2021 €45,80 /Four issues
The rest of the world 2020 €51,60 /Four issues

The full year subscription includes four issues.
The invoicing period is a full year. A continuing subscription will automatically continue the following year. The digital form is included in the subscription.

SUBSCRIBER SERVICE

Contact information: Mallikerta MH
Vanhamaantie 3-5 A6, 47200 ELIMÄKI, FINLAND
theweaverspick@mallikerta.fi
www.mallikerta.fi
Tel. +358 40 170 2007 (Mon-Fri 9:00-17:00)
Publisher: Mallikerta MH



The Weaver's Pick

A magazine full of ideas for weavers

Mallikerta
The Weaver's Pick magazine
Vanhamaantie 3 - 5 A 6
47200 ELIMÄKI FINLAND

Standard
postage

I WOULD LIKE TO SUBSCRIBE TO
the Weaver's Pick magazine

for myself as a gift

VOLUME 2021
(1-4/2021) subscription to Europe €45,80

VOLUME 2021
(1-4/2021) subscription outside Europe €51.60

My new address as of ___/___2020

I wish to cancel my subscription at the end of the period I
have paid for.

SUBSCRIBER/NEW ADDRESS

Name

Street address

Postal code and town/city

Telephone

Email

RECIPIENT OF A GIFT SUBSCRIPTION/MY OLD ADDRESS

Name

Street address

Postal code and town/city

Telephone

Email



The Weaver's Pick

*A magazine full of ideas
for weavers*



Follow us on sosial media!



[instagram/mallikerta](https://www.instagram.com/mallikerta)



[facebook.com/mallikerta](https://www.facebook.com/mallikerta)



[pinterest.com/mallikerta](https://www.pinterest.com/mallikerta)

www.mallikerta.fi
www.theweaverspick.com

COLOUR SPOTS IN A GRID

Warp stripes change from light to dark in the middle and back to the light. The colours of the warp and the weft blend into a grid where the colours change from light corners to a dark middle.

In this same warp you can weave square hand towels and table runners for autumn.

