

Price €10,10 incl. VAT

mallikerta

The Weaver's Pick

A magazine full of ideas for weavers ~~~~~ AUTUMN 3 | 2021



SIMPLY TWILL

*Rugs with
an easy basic
structure*

17

*Sparkling of colours in
a tabby and basket weave*

STRUCTURE FOR COLOURS

22



The Weaver's Pick

A magazine full of ideas for weavers

In this issue



Pepper Black and Salt

4 ” Weave stylish cottolin kitchen towels flavoured with pepper black. Draw a long warp on the loom for all the lovely weft yarns.



22

The hues of the wefts were chosen to be close to the hues of the warp threads, but not the exactly the same.

Waving lines **14**
”

The shape of lines form the structure instead of different colours, if you choose the same colour for tricot and linen wefts.



A cotton blanket is an easy and comfy choice for your home

30

AUTUMN
3/2021

TOWELS AND PLACEMATS

PEPPER AND SALT 3759	4
Cottolin kitchen towels	
CHEQUERED FLAG 3760	8
Placemats on a table loom	

RUGS

WAVES 3761	14
White linen-cotton rug	
TWISTY ROAD 3762	16
White rug with ecru ribs	
DOUBLE CHOCOLATE 3763	18
Twill rug with one shuttle	
DENIM TWILL 3764	20
Twill rug with three shuttles	

CUSHIONS AND BLANKETS

HONEYCOMB 3765	22
Deflected double weave pillows	
TRACKS AND BEADS 3766	20
A white and a colourful blanket in the same warp	

ADDITIONAL

SIMPLY TWILL	17
Treadlings for rugs	
THE WEAVING DRAFT	36
How to change the draft for a countermarch loom suitable for a table loom	

EDITOR-IN-CHIEF	Marjatta Hirvi
LAYOUT	Marjatta Hirvi
PATTERN EDITING	Siiri Korhonen, Kirsi Vakkari
PUBLISHER	Mallikerta MH
CONTACT INFORMATION	Mallikerta MH Vanhamaantie 3-5 A6, 47200 ELIMÄKI, FINLAND toimitus@mallikerta.fi
CUSTOMER SERVICE	www.mallikerta.fi Tel. +358 40 170 2007
PRINTING HOUSE	Painotalo Plus Digital

The Weaver's Pick magazine is published four times a year. Past issues are available from the publisher. The magazine accepts no responsibility for any typographical errors or other inaccuracies in the content that may cause our readers inconvenience, loss of working time or financial damage. The commercial use of the weaving patterns and the sharing of designs online is forbidden.

40th volume 2021
ISSN 0782-1530



Are you familiar with the weave draft?

We check the weave drafts for patterns before writing the instructions. Before the magazine is printed, we double check the instructions and especially the weave draft. It's quite surprising that some weavers are not familiar with this important part of the instructions.

THE WEAVE DRAFT is like a map which you use to find your way. If you're able to read and interpret the draft, you can use any kind of looms for the warp. We use mostly a countermarch loom in Finland, and our weave drafts are compatible with it. Using smaller looms has increased in popularity, so we have added more patterns for table looms. In that case the weave draft is designed for table looms, but you can also modify the draft to be used in a countermarch loom - or vice versa. We have explained the basic idea of a weave draft in the end of this magazine and how you can use it for a table loom or a countermarch loom.

We got our inspiration from the race track for this pattern. We wove a sporty, black and white **PLACE MAT** and a Polka dot pattern fit for Christmas. There are instructions for both a countermarch loom and a table loom. The black yarn is used also in the cottolin **KITCHEN TOWELS**.

The demand for rug patterns continues. We made an easy 4-shaft twill pattern for **RUGS**. Although the pattern is simple you can weave various structures with it and an ordinary "three shuttle weaving" can be done in the same way as in plain weave rugs. If you are a weave draft enthusiast it is worth checking all the lovely and colourful **HONEYCOMB** cushion patterns. There are many structures woven and you can design more.

Now it is time to weave! *Marjatta*



DESIGN OF PATTERN **Marjatta Hirvi** WEAVER **Kirsi Vakkari***Kitchen towels**Finished size 41 x 59 cm, 42 x 42 cm**and a linen towel 45 x 45 cm*

Pepper and Salt 3759

Weave stylish cottolin kitchen towels flavoured with pepper black. Wind a long warp for all the lovely weft yarns you can use in this pattern. Weave a fast-drying cloth with linen yarn and a softer cloth for instance for hand towels with cotton yarn. Use cottolin yarn for all kinds of home textiles.

The warp Cottolin 22/2 (22/2 Bomull Lin), tex 76x2,
1 kg = approx. 6400 m, 60 % cotton 40 % linen
Garnhuset i Kinna

Warp width 48,2 cm
the sett 8 ends/cm
number of yarn ends 386
length 4,33 m

Reed 2 per dent in a 40-dent reed (metric) = 40/2
Structure Huckaback

AMOUNT OF WARP YARN NEEDED

Cottolin 22/2 (22/2 Bomull Lin), tex 76x2,
1 kg = approx. 6400 m, 60 % cotton 40 % linen
black 169 g
white (= bleached) 65 g
unbleached 46 g

INSTRUCTIONS FOR WINDING THE WARP

28 threads white
22 threads unbleached
22 threads white
22 threads unbleached
22 threads white
22 threads unbleached
22 threads white
226 threads black
= 386 threads in total ▶





AMOUNT OF WEFT YARN NEEDED

Cottolin 22/2 approx. 60 g for 1 meter

Line linen 8 or Linen Tow 8 approx. 70 g for 1 meter
when the sett is 8 picks/cm

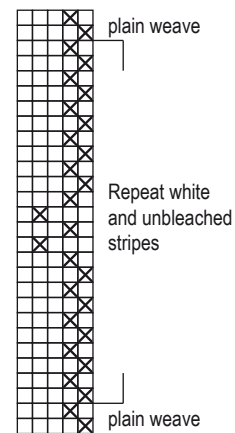
FINISHING FOR ALL TOWELS

Finish the edges of each towel with 3-step zigzag stitches.

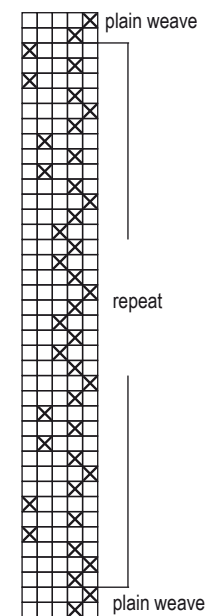
Steam or iron the fabric. Sew the hems by hand. Finished size of the hem is around 1 cm. Use the loom waist for the hanging loops. Braid the warp threads doubled to have sturdy loops.

Braid 14 cm log band for a one hanging loop.

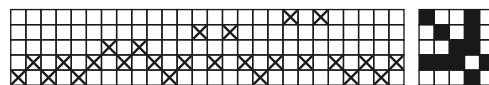
Wash 40 – 60°C. Wash by hand the first time. There might appear lint in the wash. ▶



LINEN TOWELS



LONG TOWELS



$3 \times 2 = 6$

$17 \times 22 = 374$

$3 \times 2 = 6$

Long towels

Finished size 41 x 59 cm, 2 pcs

Weave 1 cm tabby for a hem at both ends. Weave the towel with unbleached Cottolin 22/2 according to the treadling instructions. The sett is 8 picks/cm. The woven length is 68 cm + hems á 1 cm. Braid the hangingloop of unbleached threads and sew it in the middle of the short side inside the hem. The size of the towel before washing was 44 x 60 cm.

AMOUNT OF WEFT YARN NEEDED

Cottolin 22/2 (22/2 Bomull Lin), tex 76x2, 1 kg = approx. 6400 m, unbleached 40 g for 1 towel.

Linen towels

Finished size 45 x 45 cm, 2 pcs

Weave 2 cm tabby for a hem at both ends. Weave alternating white and unbleached stripe. The stripes are as high as in the warp. The woven length is 57 cm + hems á 2 cm. Braid the hangingloop of black threads and sew it in the middle of the short side inside the hem. The size of the towel before washing was 47 x 47 cm.

AMOUNT OF WEFT YARN NEEDED for one towel

Line linen or Linen tow 8, 1 kg = approx. 4 800 m / 5 100 m
white = bleached 23 g
unbleached 17 g

Black square towels

Finished size 42 x 42 cm, 2 pcs

Weave 1 cm tabby for a hem at both ends. Weave stripes with white and unbleached in the same order as in the warp and the rest of the towel with black. The woven length is 50 cm + hems á 1 cm. Braid the hangingloop of black threads and sew it into the black corner of the towel inside the hem. The size of the towel before washing was 44 x 44 cm.

AMOUNT OF WEFT YARN NEEDED for one towel

Cottolin 22/2 (22/2 Bomull Lin), tex 76x2, 1 kg = approx. 6400 m,
black 16 g
white = bleached 9 g
unbleached 5 g



Braid the hanginloops of the warp threads.

Obs. Towels in the pictures are unwashed. After washing the structure was as beautiful as earlier and the pattern was more intense.

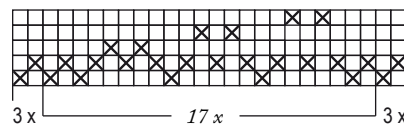


TABBY TOWEL 

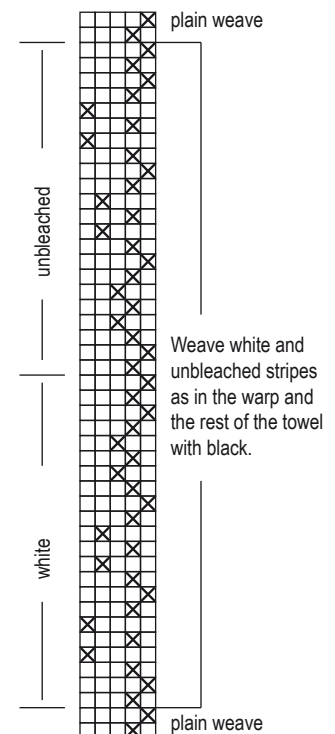
You can weave also tabby towels!



BLACK SQUARE TOWELS



3 x 2 = 6 17 x 22 = 374 3 x 2 = 6





DESIGN OF PATTERN **Marjatta Hirvi** WEAVER **Kirsi Vakkari**

Placemats on a table loom
Finished size 33 x 44 cm

Chequered Flag 3760

Thick cotton yarn is a perfect choice for table looms. These homely-looking placemats are quickly woven. Finish the placemats by tucking the warp ends behind the weft ends.

The same kinds of sport thickness yarns as used in this pattern can be easily found from many shops.

The warp Cotton Soft Novita, 010 natural white
 50 g = 120 m, 100 % cotton, Novita Oy

Warp width 36 cm
 the sett 4 ends/cm
 number of yarn ends 144
 length 3,36 m
 amount of warp yarn needed 214 g

Reed 1 per dent in a 40-dent reed (metric) = 40/1
 Structure Weft-faced rep

Black and white placemats

Size finished 32 x 44 cm

AMOUNT OF WEFT YARN NEEDED for 1 place mat

Cotton Soft Novita, 50 g = 120 m, 100 % cotton

010 natural white 80 g

099 black 10 g

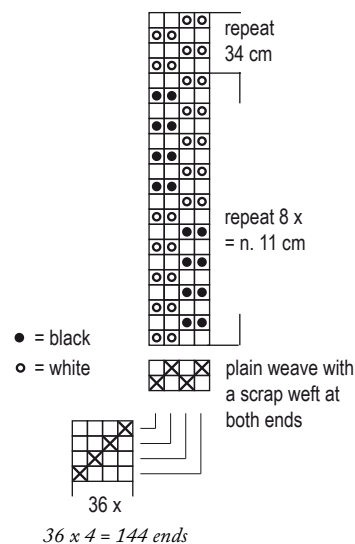
WEAVING INSTRUCTIONS

Leave 8 cm of length for the finishing at the ends of the placemats. The warp ends are finished by tucking them behind the wefts in the direction of the warp. Weave approx. 2 cm with scrap weft at both ends. Start the placemat with white weft yarn. Throw 4 times by alternating white and black weft yarn. Change the colour of the square by throwing white 2 times. Weave 16 black and white rows = 11 cm. Weave the rest of the placemat with white. = 34 cm. ▶

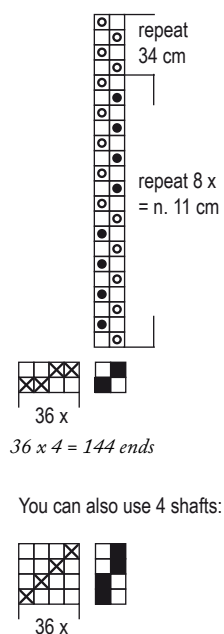


Black and white
CHEQUERED FLAG

TABLE LOOM



FLOOR LOOM



The woven length of the fabric is 45 cm.

The sett is 13 picks/cm.

Taper the weft tail when starting, finishing, and joining the wefts. Divide the weft tail by the length of approx. 7 cm in two parts and cut off the other part. The joints of strongly different coloured wefts stick out if not tapered.

FINISHING

Threading warp ends back to the fabric is a neat and durable finishing for the placemats. The ends of the tablemat narrow slightly.

End the threads by tucking them behind the wefts in the direction of the warp. Use a blunt needle. Thread always two warp threads at a time under the next weft float. Trim the tails. *Tip:* Thread every other pair of warp ends slightly longer up to smoothen the ending line. Press the placemat through a damp cloth. ▶

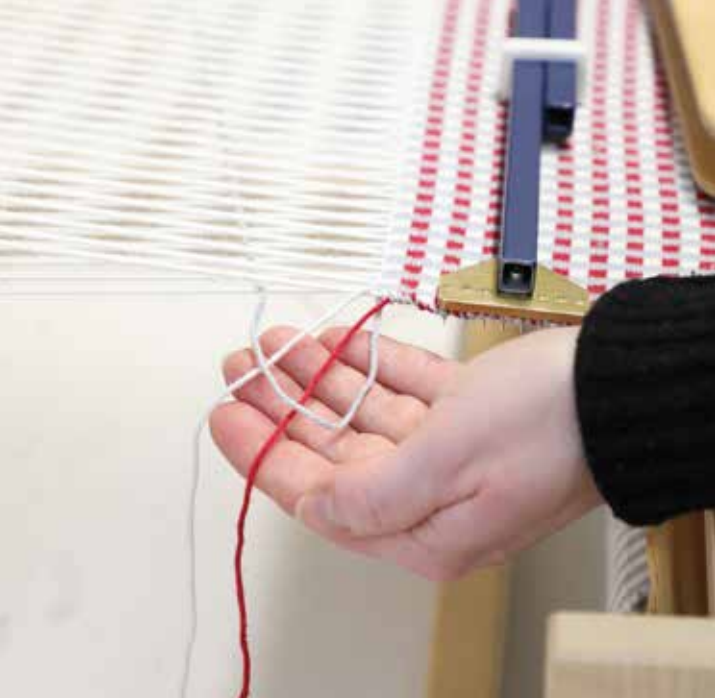
How to thread the warp ends back to the woven fabric

Weft-faced rep placemats can be finished by threading the warp ends back to the fabric. Use a blunt point needle with a large eye.

1. Leave 8 cm length of warp for finishing at both ends of the placemat. Weave the length between the placemats loosely with some scrap weft.
2. Cut the placemats apart.
3. Thread the warp ends back to fabric systematically behind the next weft floats 2 threads at a time to the length of 2 - 3 cm. Unravel the scrap wefts at the same time. Don't make knots!
5. Cut the tails of the threads from the surface. Press the placemat through a damp ironing cloth.



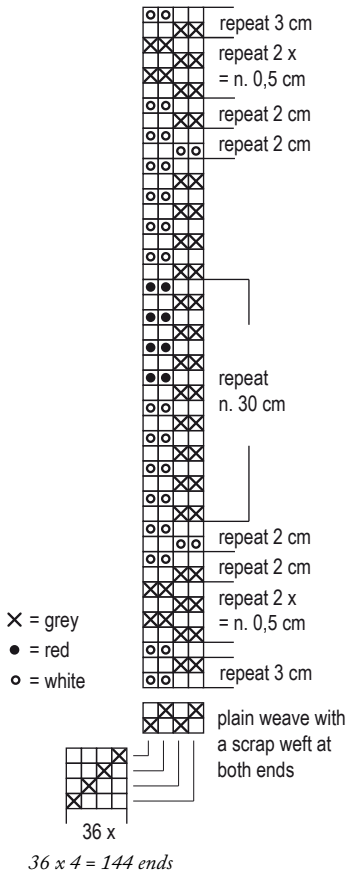




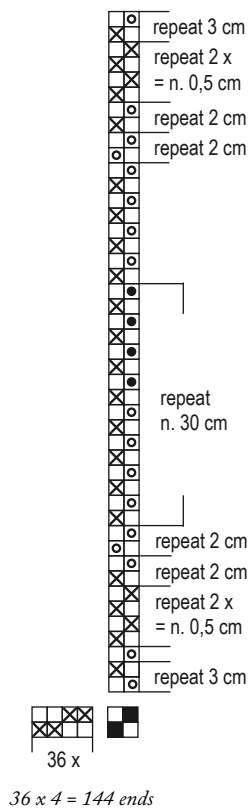
*Start in time!
Weave
placemats for
Christmas*

Polka dot placemats

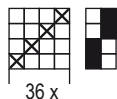
TABLE LOOM



FLOOR LOOM



You can also use 4 shafts:



Polka dot tablemats

Size finished 33 x 44 cm + fringes á 5 cm

AMOUNT OF WEFT YARN NEEDED for 1 place mat

Cotton Soft Novita, 50 g = 120 m, 100 % cotton

405 grey (pearl) 50 g

010 natural white 40 g

549 red (christmas) 20 g

WEAVING INSTRUCTIONS

Leave the 10 cm length for the finishing at the ends of the placemats. Weave approx. 2 cm with scrap weft at both ends. Weave by alternating two colours when there is two colours in use. Leave always the natural white and red weft under the grey weft at the edges in the three coloured middle. See the picture up left.

Weave:

3 cm natural white and grey

0,5 cm grey (8 picks)

2 cm natural white and grey

2 cm natural white

Repeat 30 cm: alternately 4 x natural white and grey and 4 x red and gray

4 x natural white and grey

2 cm natural white

2 cm natural white and grey

0,5 cm grey (8 picks)

3 cm natural white and grey

FINISHING

Tye overhand knots with 4 ends. Cut the fringe even. Press the placemats through an damp ironing cloth. ●





DESIGN OF PATTERN **Marjatta Hirvi** WEAVER **Kirsi Vakkari**

A white twill rug
Finished size 80 x 179 cm

Waves rug 3761

A single-colour rug charms with a beautiful wavy structure. The thick and soft cotton tricot has been paired with a faintly glossy and tight linen cord. Choose the same color from the cotton tricot and linen, and the pattern will consist of the surface and not the colors. The calm wavy pattern is also suitable for a larger carpet.

The warp Liina Cotton Twine 12-ply, tex 30x12
 1 kg = approx. 2 560 m, Suomen Lanka / Lankava

Warp width 84,8 cm
 the sett 2,5 ends/cm
 number of yarn ends 212 + 4
 length 9,2 m (4 rugs)
 amount of warp yarn needed

Reed 1 per dent in a 25-dent reed (metric) = 25/1
Structure Twill modified to a weft-faced rib

AMOUNT OF WEFT YARN NEEDED for 1 rug

T-shirt yarn (cotton tricot), soft
 Natural white 2 220 g

Linen cord, 100 % linen, 1 kg = approx. 410 m, tex 1250x2,
 Lappajärven Värjäamo Oy
 white 715 g

WEAVING INSTRUCTIONS

Leave around 12 cm for the finishing on both ends. Start and finish by weaving a few shots of extra weft, the weft will be undone later. Weave 3 picks with cotton twine at the beginning and end of the rug. Weave the rug alternating linen cord and cotton tricot according to the treadling instructions. Leave an large arc of the cotton tricot weft in the shed but the leave the linen cord quite straight.

FINISHING

Tie the fringe with tight square knots 2 + 2 ends together. End the warp threads by tucking them behind the weft floats around the length of 2,5 - 4 cm. Thread on the both sides of the rug. Alternate the length of the threading. Cut the thread tails from the surface of the rug.

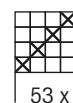
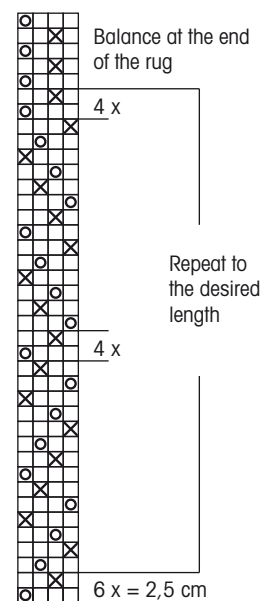
See the pictures on page 17. ●



Treadling:
 ○ = Linen Cord
 X = Cotton tricot

Threading:
 Thread two outmost warp ends doubled.

You can take the warp ends out from the heddle (one outmost) at both sides = floating selvages. Always throw the shuttle over the floating selvage and take out under the floating selvage.



53 x 4 = 212 + 4 doubled ends



A linen lined twill rug
Finished size 80 x 180 cm

Twisty road 3762

The rib weave rug is woven with two different-strength wefts. A diagonal line becomes strongly visible when the weft yarns are different colours. It's a good idea to choose colours or shades that are near each other. Strong color differences form an optical illusion of movement, causing the lines to begin "flicker in the eyes".

The warp The warp Liina Cotton Twine 12-ply,
 tex 30x12, 1 kg = approx. 2 560 m,
 Suomen Lanka / Lankava

Warp width 84,8 cm
 the sett 2,5 ends/cm
 number of yarn ends 212 + 4
 length 9,2 m (4 rugs)
 amount of warp yarn needed 790 g

Reed 1 per dent in a 25-dent reed (metric) = 25/1
Structure Twill modified to a weft-faced rib

AMOUNT OF WEFT YARN NEEDED for 1 rug

T-shirt yarn (cotton tricot), soft

Natural white 2,44 kg

Linen cord, 100 % linen, 1 kg = n. 410 m, tex 1250x2,
 Lappajärven Värjäämö Oy
 unbleached 845 g

WEAVING INSTRUCTIONS

Leave around 12 cm for the finishing on both ends. Start and finish by weaving a few shots of extra weft, the weft will be undone later. Weave 3 picks with cotton twine at the beginning and end of the rug. Weave the rug alternating linen cord and cotton tricot according to the treadling instructions. Leave an large arc of the cotton tricot weft in the shed but the leave the linen cord quite straight. ●

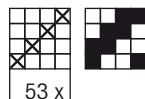
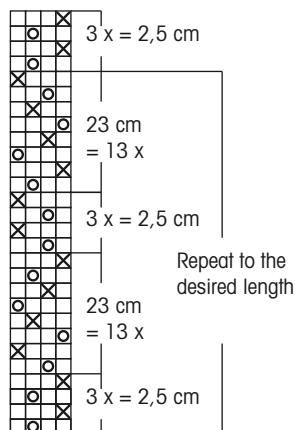
Treadling:

- = Linen Cord
- × = Cotton tricot

Threading:

Thread two outmost warp ends doubled.

You can take the warp ends out from the heddle (one outmost) at both sides = floating selvages. Always throw the shuttle over the floating selvage and take out under the floating selvage.



53 x 4 = 212 + 4 doubled ends

How to thread the warp ends back to the fabric

Wave and Twisty road rugs are treadled to the weft-face rib structure. The warp ends are easy to thread back to the rib weave fabric.

You need an large eye needle with blunt point for the threading.

1. Tie square knots with 2 + 2 threads.
2. Thread the warp ends behind the weft floats in the 2 threads at a time. The height of the threading is around 2.5 -3 cm. Tight rib weave structure keeps the threaded warp ends securely inside the fabric.
3. Thread on the both sides of the rug.
4. Cut the thread tails from the surface of the rug.



1.



2.



3.



4.

Simply Twill

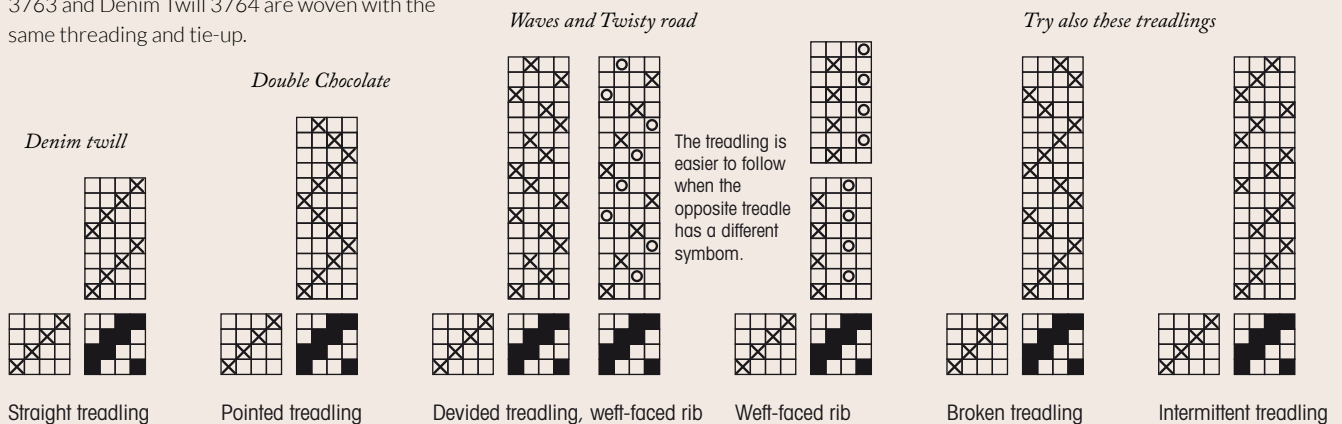


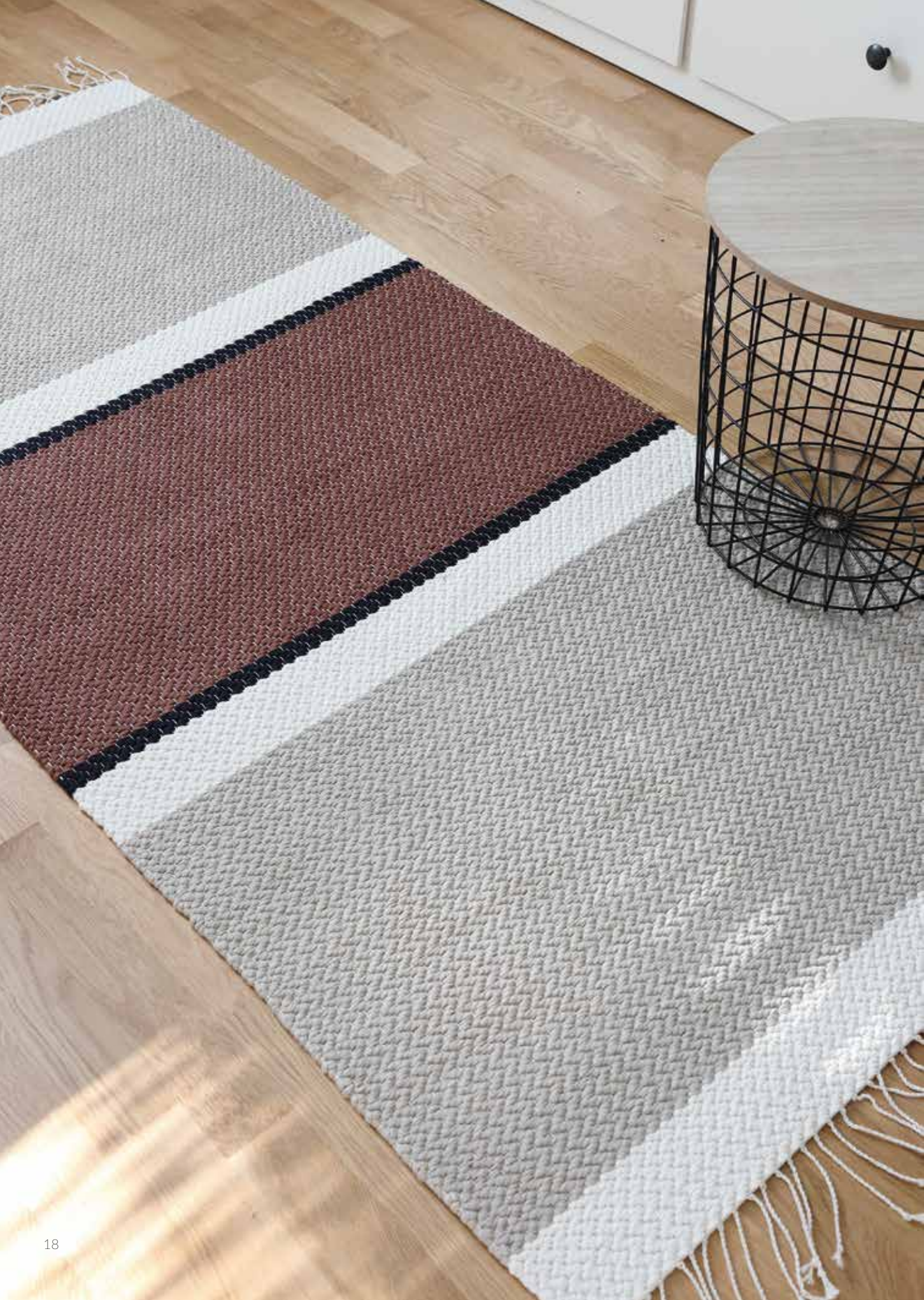
Wave 3761, Twisty road 3762, Double Chocolate 3763 and Denim Twill 3764 are woven with the same threading and tie-up.

The simple and clear batavia twill is as good choice for rugs as an ordinary plain weave. The regular straight threading gives a beautiful and distinct structure, and it can be conveniently modified with treadling and weft yarn.

With straight treadling, the carpet can be woven with three shuttles in the same way as tabby rag rugs. The edges become neat by leaving the outermost warp thread out of the heddle on both sides.

In the divided treadling and in the weft-faced rib, two different kinds of wefts are thrown alternately. The wefts can be of different colors and of different strengths. Choose colors and shades that are close to each other so that diagonal lines do not become disturbingly powerful.





DESIGN OF PATTERN **Marjatta Hirvi** WEAVER **Kirsi Vakkari**

A zigzag twill rug
Finished size 79 x 175 cm

Double Chocolate 3763

Weaving with one shuttle is fast! Use different weight rug-wefts to try the formation of a zigzag pattern. A heavy and stiff weft does not enter enough in the shed to make the pattern dense and beautiful. All weft yarns must be of the same strength. The width of the rug does not remain the same if you alternate a thicker and thinner weft.

The warp Liina Cotton Twine 12-ply, tex 30x12
 1 kg = approx. 2 560 m, Suomen Lanka / Lankava

Warp width 84,8 cm
 the sett 2,5 ends/cm
 number of yarn ends 212 + 4
 length 9,2 m (4 rugs)
 amount of warp yarn needed 790 g

Reed 1 per dent in a 25-dent reed (metric) = 25/1
Structure Twill



AMOUNT OF WEFT YARN NEEDED for 1 rug

T-shirt yarn (cotton tricot)

beige 1 460 g

brown 570 g

natural white 570 g

black 95 g = 2 695 g in total

WEAVING INSTRUCTIONS

Leave around 15 cm of the warp at each end of the rug for the fringe. Start and finish the rug with a few shots of scrap weft to support the ends of the rug. Weave 3 picks with Cotton Twine at the beginning and the end of the fabric. Weave the rug striped. Start every stripe with treadle 1 (outmost on the left side)

Stripes:

8 cm natural white

51 cm beige

8 cm natural white

2,5 cm black

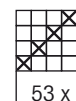
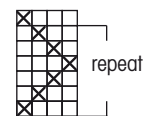
44 cm brown = the middle

Weave the other end of the rug as a mirror image.

Threading:

Thread two outmost warp ends doubled.

You can take the warp ends out from the heddle (one outmost) at both sides = floating selvages. Always throw the shuttle over the floating selvage and take out under the floating selvage.



$53 \times 4 = 212 + 4 \text{ doubled ends}$

FINISHING

Make a twisted fringe: Tye first 2 + 2 warp threads with a square knot. Twist these same 2 + 2 threads tightly into the same direction. Connect the ends with an overhand knot. Cut the ends to an even length. ●



DESIGN OF PATTERN **Marjatta Hirvi** WEAVER **Kirsi Vakkari***A twill rug**Finished size 79 x 180 cm*

Denim Twill 3764

The denim rug is woven with three shuttles and a straight treadling. Two of the wefts are self-cut rags and the third is a cotton tube yarn. Materials can be varied in the same way as in a tabby rag rug. It's easy to make the edges neat by leaving the outmost warp thread out of the heddle on both sides. Always throw the shuttle over the outermost thread and take off the under.

The warp Liina Cotton Twine 12-ply, tex 30x12
1 kg = approx. 2 560 m, Suomen Lanka / Lankava

Warp width 84,8 cm
the sett 2,5 ends/cm
number of yarn ends 212 + 4
length 9,2 m (4 rugs)
amount of warp yarn needed 790 g

Reed 1 per dent in a 25-dent reed (metric) = 25/1
Structure Twill

AMOUNT OF WEFT YARN NEEDED for 1 rug

Denim fabric strips 1 180 g

Cotton fabric strips, grey 626 g

Eko Tube Yarn, 10 mm wide, 1 kg = approx. 270 m, Lankava denim blue 930 g

Cut the denim fabric into a 1,5 cm wide and the cotton fabric into the 1,7 cm wide strips for the weft.

WEAVING INSTRUCTIONS

Leave around 15 cm of the warp at each end of the rug for the fringe. Weave 3 picks with Cotton Twine at the beginning and the end of the fabric. Weave the rug with three shuttles: 1 cotton strip, 1 Eko Tube Yarn and 1 denim fabric strip alternately. The woven length is 182 cm, measured under tension.

FINISHING

Make a twisted fringe: Tye first 2 + 2 warp threads with a square knot. Twist these same 2 + 2 threads tightly into the same direction. Connect the ends with an overhand knot. Cut the ends to an even length. ●



Tip Watch a new video on our YouTube channel about floating selvages on rugs.

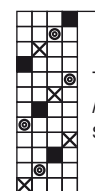
Threading:

Thread two outmost warp ends doubled.

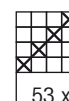
You can take the warp ends out from the heddle (one outmost) at both sides = floating selvages. Always throw the shuttle over the floating selvage and take out under the floating selvage.

Treadling:

✕ = cotton fabric strip
● = Eko Tube Yarn
■ = denim fabric strip



Treadling:
Alternate with three shuttles.



53 x 4 = 212 + 4 (doubled ends)

Square Cushions Large Cross, Loop and Nest



DESIGN OF PATTERN **Siiri Korhonen** WEAVER **Siiri Korhonen***Square Cushions**Finished size 43 x 43 cm**Neck Cushions**Finished size 43 x 27 cm*

Honeycomb 3765

The hues of the wefts were chosen to be close to the hues of the warp threads, but not exactly the same. This makes the hues of the final products vivid. Sirkka rya yarn has a stunning 147 colour selection. On the other hand, if the colours of the wefts differ too much from the colours of the warp, the pattern might become unclear.

The loom waste and apron rod ties were utilized to the tassels in the corners of the cushions. The zipper was sewn in the middle of the cushion. The inner cushion is this way easy to insert, the sewing is easy and the zipper isn't visible, like it would be if sewn in the side.

The warp Sirkka rya yarn 140x3, 100 g = n. 230 m,
100 % wool, Taito Pirkanmaa Oy

Warp width 48,8 cm
the sett 5 ends/cm
number of yarn ends 244
length 5,87 m

amount of warp yarn needed
(1171) yellow 323 g ja
(3343) petroleum 329 g

Reed 1 per dent in a 50-dent reed (metric) = 50/1

Structure Deflected double weave

Weft Same as the warp thread

INSTRUCTIONS FOR WINDING THE WARP

Wind two warp threads at a time, holding one petroleum coloured and one yellow thread in your hand.

240 ends petroleum (3343) and yellow (1171)

4 ends yellow (1171) = 244 ends in total.

Obs. In the threading alternates 4 ends petroleum and 4 ends yellow. See picture on the right.

Remove the outermost heddles from the shafts to create floating selvages or leave the outermost ends unthreaded in the first place.



The warp was wound two different coloured warp threads at a time. One portee consisted of one yellow and one blue thread. To ease the threading, the ends were bundled before the threading in a way that each bundle had either four yellow or four blue threads alternating. The outermost bundles were yellow. The ends were collected to the bundles in the order indicated by the cross. The warp was threaded in this order, bundle by bundle. This procedure sped up the winding of the warp but didn't interfere with the weaving because wool is an easy and elastic material.



Tip Color experiments can be done just on some part of the warp.

WEAVING INSTRUCTIONS

Keep the sett balanced to prevent the patterns from flattening or stretching. The sett is 5 picks/cm.

You can choose the side you prefer to be the face side of the final product.

You can also design your own pattern by changing the treadling. Throw a blue weft while treadling 1., 2., 5. and 6. treadle and a yellow weft with 3., 4., 7. and 8. treadle. ▶

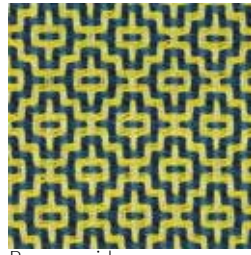
Square cushion Nest and Neck cushion Small Cross, picture on the left.
Neck cushions Small Cross, Labyrinth and Lemon, picture below.



NEST



Right side



Reverse side



Right side, wet-finished



Reverse side, wet-finished

SMALL CROSS



Right side



Reverse side



Right side, wet-finished



Reverse side, wet-finished

LARGE CROSS



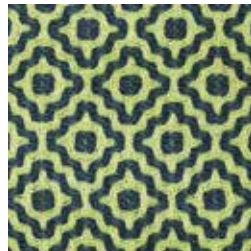
Right side



Reverse side



Right side, wet-finished



Reverse side, wet-finished

LEMON



Right side



Reverse side



Right side, wet-finished

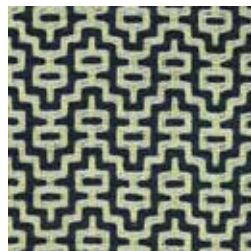


Reverse side, wet-finished

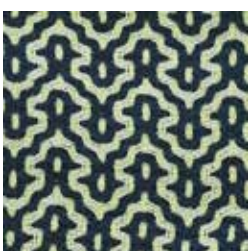
LOOP



Right side



Reverse side



Right side, wet-finished



Reverse side, wet-finished

LABYRINTH



Right side



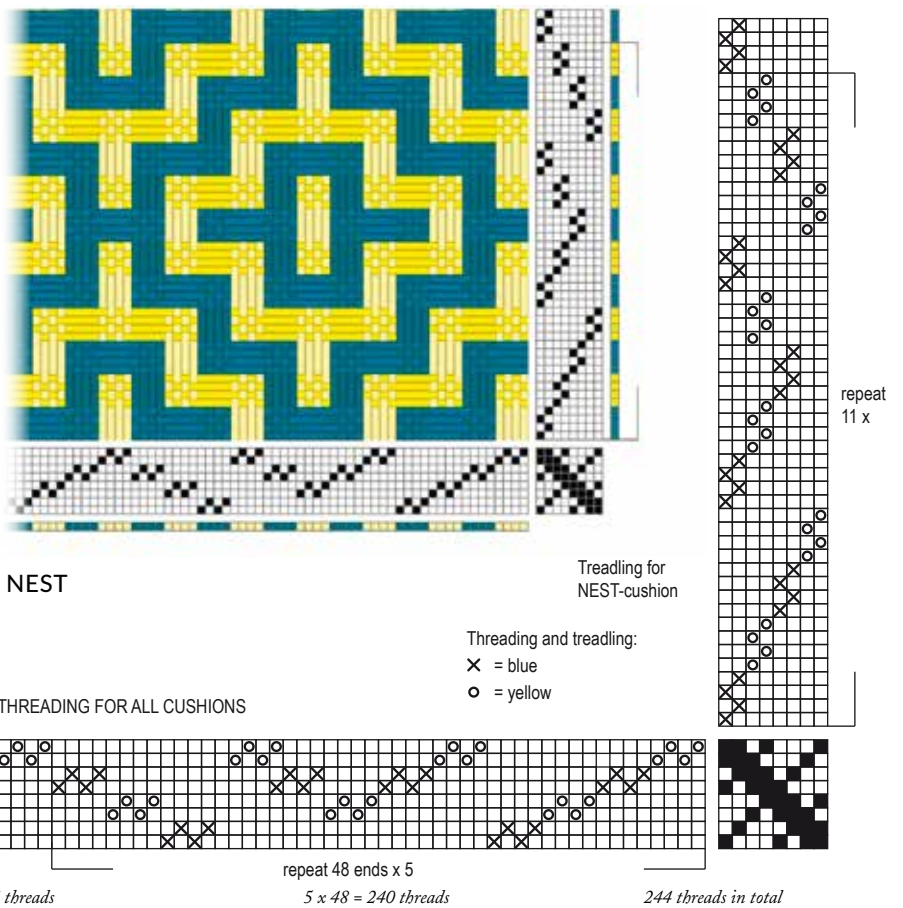
Reverse side



Right side, wet-finished



Reverse side, wet-finished



Nest - square cushion

WEFT YARN NEEDED

Yellow (6421) 60 g and blue-green (3711) 60 g.

Tassels:

1 g blue-green (3711) & 3 g petroleum (3343) per tassel.

INSTRUCTIONS FOR WEAVING

Weave 2 cm with scrap wool yarn using straight treading. Weave the repeat for 11 times plus the extra picks to balance. The sett is 5 picks/cm. Weave 2 cm with scrap yarn at the end. The length of the patterned area was approx. 106 cm.

The repeat was approx. 9,5 cm. The patterned fabric was 98 cm x 44 cm off the loom.

Large Cross -square cushion

WEFT YARN NEEDED

Blue-grey (3071) 59 g and light green (6431) 59 g.

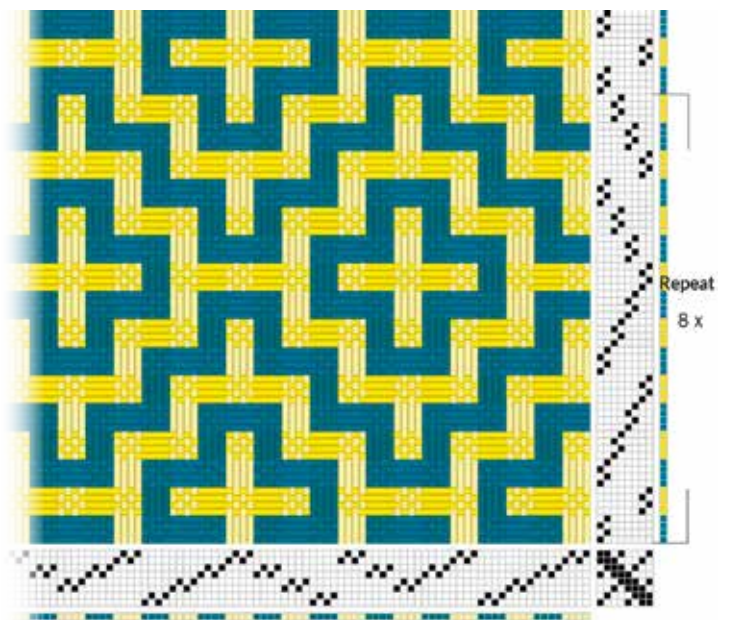
Tassels: 1 g light green (6431) & 3 g yellow (1171) per tassel.

INSTRUCTIONS FOR WEAVING

Weave 2 cm with scrap wool yarn using straight treading. Weave the repeat for 8 times plus the extra picks to balance. The length of the patterned area is approx. 105 cm. Weave 2 cm with scrap yarn at the end.

The repeat was approx. 12,75 cm.

The patterned fabric was 93 x 44 cm off the loom. ▶



LARGE CROSS

Loop - square cushion

WEFT YARN NEEDED

Dark petroleum (3141) 60 g and mint green (1041) 60 g. Tassels: 1 g mint green (1041) & 3 g yellow (1171) per tassel.

INSTRUCTIONS FOR WEAVING

Weave 2 cm with scrap wool yarn using straight treadling. Weave the repeat for 16 times. The length of the fabric was approx. 103 cm. Weave 2 cm with scrap yarn at the end.

The repeat was approx. 6,5 cm. The patterned fabric was 93 x 43,5 cm off the loom.

Small Cross

- neck cushion

WEFT YARN NEEDED

Dark petroleum (3141) 33 g and yellow (6421) 34 g. Tassels: 1 g yellow (6421) & 3 g yellow (1171) per tassel.

INSTRUCTIONS FOR WEAVING

Weave 2 cm with scrap wool yarn using straight treadling. Weave the repeat for 9 times plus the extra picks to balance. The length of the fabric was approx. 60 cm. Weave 2 cm with scrap yarn at the end. The repeat was approx. 6,6 cm. The patterned fabric was 53,5 x 43 cm off the loom.

Lemon - neck cushion

WEFT YARN NEEDED

Blue (3283) 35 g and light green (6431) 36 g. Tassels: 1 g blue (3283) & 3 g petroleum (3343) per tassel.

INSTRUCTIONS FOR WEAVING

Weave 2 cm with

scrap wool yarn using straight treadling. Weave the repeat for 5 times plus the extra picks to balance. The length of the fabric was approx. 64 cm.

Weave 2 cm with scrap yarn at the end.

The repeat was approx. 12,6 cm. The patterned fabric was 57,5 x 43 cm off the loom.

Labyrinth

- neck cushion

WEFT YARN NEEDED

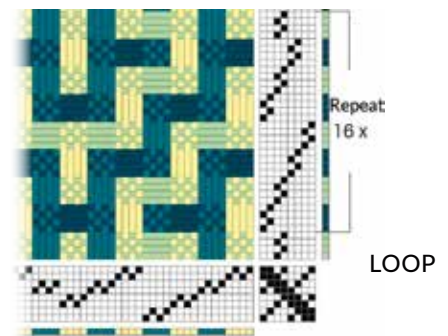
Dark green (2243) 44 g and yellow (1171) 29 g. Tassels: 1 g dark green (2243) & 3 g petroleum (3343) per tassel.

INSTRUCTIONS FOR WEAVING

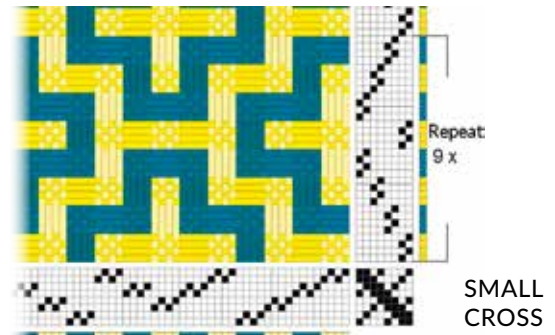
Weave 2 cm with scrap wool yarn using straight treadling. Weave the repeat for 4 times but leave out the last 4 picks. The length of the fabric was approx. 64 cm. Weave 2 cm with scrap yarn at the end.

The repeat was approx. 13 cm. The patterned fabric was 56 x 43 cm off the loom.

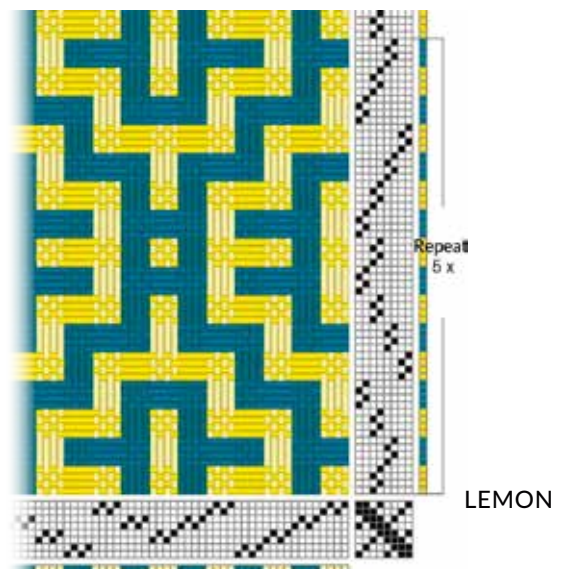
The threading for all cushions is on page 26.



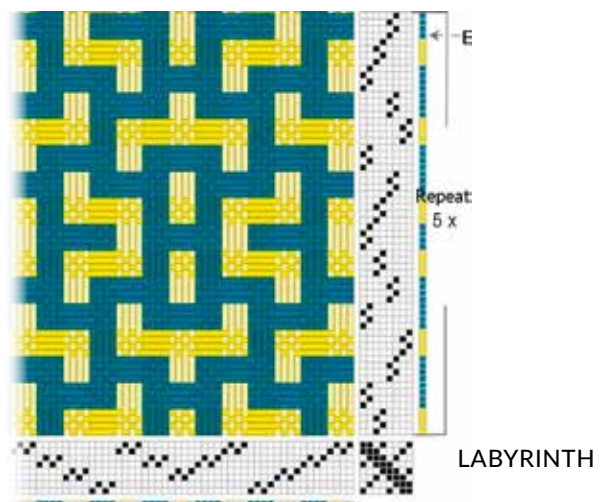
LOOP



SMALL CROSS



LEMON



LABYRINTH



Labyrinth, Lemon and Small Cross.

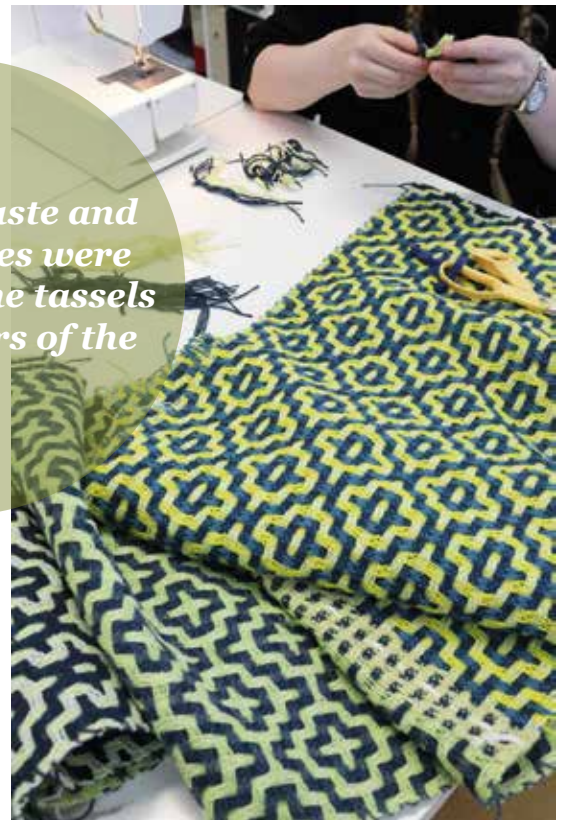


Tassels

Weight 4 g of yarn and cut to 15-20 cm long strips.

1. Remove 4 strips from the bundle. Tie the bundle in the middle with 2 strips.
2. Tie the sides of the bundle together with another 2 strips.
3. Slip the ends inside the tassel with a needle.
4. Even out the ends of the tassel.
5. Attach the tassel to the cushion by threading the first strips in the eye of a large blunt needle and poke through the corner of the cushion.
6. Make two overhand knots in the same spot on top of each other as close to the corner as possible to lock the tassel in its place.

The loom waste and apron rod ties were utilized to the tassels in the corners of the cushions



1.



2.



3.



4.



5.



6.

FINISHING

Soak the fabric in lukewarm water and move slowly and gently in the water. Dry flat.

1. Sew 3-step zigzag on top of the scrap yarn at the ends of the pieces and cut apart.
2. Sew a 45 cm long zipper symmetrically at the cut ends of the piece to create a cylinder-shaped piece. Don't topstitch because it would be visible in an unfavourable way.
3. The back side facing, pin and sew the side seams in a way that the zipper remains in the middle of the cushion. Match up the same coloured wefts in the sides to make the pattern continue over the side seam.
4. Sew the side seams 6 ends from the selvedge (approx. 1 cm from the edge). Turn the piece.
Sew or buy matching sized inner cushions. ●



2.



3.



4.



1.





DESIGN OF PATTERN **Marjatta Hirvi** WEAVER **Kirsi Vakkari***Soft cotton blankets*

Tracks and Beads

3766

These blankets have a warm feeling to them. We used a thick cotton yarn to create a wonderfully soft surface and fluffy texture on the fabric. Winding the warp was easy when we slipped the yarn balls into the baskets. In the structure of the fabric, the plain weave and thread floats form a beautiful surface on both sides of the cover.

The warp Cotton Soft Novita, 010 natural white,
50 g = 120 m, 100 % cotton (tex. n. 410)

Warp width 100 cm
the sett 4ends/cm
number of yarn ends 400
length 4,34 m
amount of warp yarn needed 704 g

Reed 1 per dent in a 40-dent reed (metric) = 40/1

Structure Cord weave

The weft Same as the warp

Finished size 87 x 151 cm

Tracks of colour

WEAVING INSTRUCTIONS

Weave 6 cm plain weave for the hem with grey (405) thread. Obs! Weave the other end of the blanket with natural white (010). Weave 4 picks with one colour and 4 picks tabby between the colour stripes. A dark and a light colour alternates.

Blue stripes:

Repeat 2 x:

grey plain weave

blue colour stripe (first throw from the left side)

grey plain weave

dark blue colour stripe (first throw from the right side)

Repeat 2 x:

natural white plain weave

blue colour stripe ▶



Fold the blanket on a drying rack and change and change the places of plaits res times while drying.



SELVAGES

Do not cut the colour weft while weaving the plain weave. Bind it with the first second colour pick against the selvage and again with the last colour pick. Do the same with the other colours at the other edge. You can also bind the colour weft in the middle of the plain weave section if you find it useful.



natural white plain weave

dark blue colour stripe

Weave the red and yellow sections in the same way.

The colour order of the stripes

blue and dark blue

light red and red

light yellow and yellow

Repeat 4 x

+ blue and dark blue to the end of the blanket

The sett in hem is 5 picks /cm. The sett in colour stripes is 6 – 7 picks/cm and the sett in plain weave is 5 picks/cm. 2 colour stripes + 2 plain weave sections = 16 picks = 3 cm. The height of one colour section is 13 cm. The woven length is 169 cm + hems á 6 cm. Size of the loom was 92 x 156 cm after wet-finishing 87 x 156 cm.

Tip: Throw the plain weave weft from the same side as you press the treadle, and you'll know which of the plain weave treadles is in turn. When you are pressing the left treadle, throw the weft from the left side and when pressing the treadle on right, throw the weft from the right side.

AMOUNT OF WEFT YARN NEEDED

405 grey 114 g

010 natural white 104 g

114 blue 33 g

171dark blue 34 g

504 light red 29 g

549 red 29 g

203 light yellow 29 g

269 yellow 27g

399 g in total

FINISHING

Steam or press the blanket fabric and hems. Sew the hems by hand using a cotton thread. Wash 40 – 60°C. Dry flat. Shape while slightly damp, steam or iron through an ironing cloth. ▶

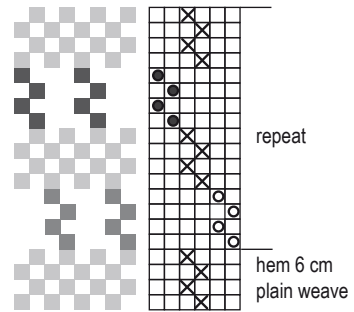
TRACKS OF COLOUR

Treadling:

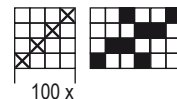
× = grey / white

● = dark colour

○ = light colour



Take a thread out from the one outmost heddle on both sides.



100 x 4 = 400 threads





Finished size 84 x 142 cm

Beads, white blanket

AMOUNT OF WEFT YARN NEEDED

Cotton Soft Novita, 50 g = 120 m, 100 % cotton, Novita 010 natural white 500 g

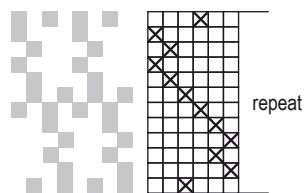
WEAVING INSTRUCTIONS

Leave 9 cm length for the fringes (short fringes). Weave the blanket according to the treadling order. The sett is approx. 7 picks/cm. The woven length is 168 cm, measured under tension. Size off the loom was 90 cm x 150 cm and after wet-finishing 84 x 142 cm. *Obs!* Use a stretcher right from the start as the fabric narrows a lot. Weave a header at the beginning with scrap weft (to be unravelled later).

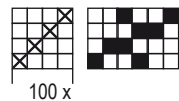
FINISHING

Tie the ends with overhand knots. Cut the fringe to an even length. Steam or press the fabric. Wash 40 – 60°C. Dry flat. Shape while slightly damp, steam or iron through an ironing cloth. ●

BEADS,
WHITE
BLANKET



Take a thread out from the one outmost heddle on both sides.



100 x
100 x 4 = 400 threads



OPTIONAL PATTERN "DIAMOND"

Floor loom

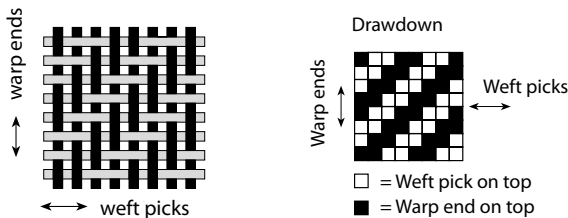
OR

Table loom

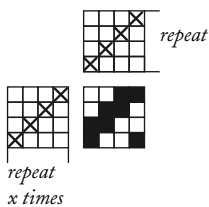
A weaving draft

The woven fabric consists of two yarn systems: the warp (ends) and the weft (picks). Different kinds of interlacements of warp and weft threads are called weave structures. The draft provides a graphic representation of the interlacement of warp and weft threads.

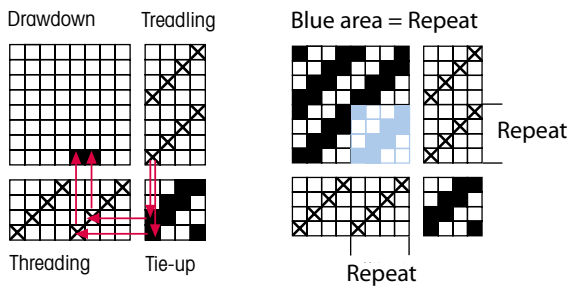
The four elements of the draft are **THREADING**, **TREADLING**, **TIE-UP**, **DRAWDOWN**. The drawdown has often been omitted from weaving patterns. In a draft for a table loom shaft and lever interrelated are linked with a drawn line. Instead of the part for treadling, there is a lifting plan for the shafts.



In the drawdown every square in the grid shows one point of interlacement between the warp and the weft. Black squares indicate intersections where the warp threads are on top of the weft threads and the white squares where the warp threads are under the weft thread.



The threading, the tie-up and the treadling are shown in the instructions of a weaving pattern, but not the drawdown. You can create the drawdown yourself with the instructions below.



From the tie-up you can see which shafts and warp threads are lifted. If the square is black, the shaft on the same row on the left of it is lifted. If the square is white the shaft and warp threads on it are lowered.

The four elements of the draft can also be arranged in a different order. The threading can be at the top left, the tie-up at the right corner up and the treadling under it. However, the connection between treadles and shafts always remains the same.

You can modify the same draft as suitable for different types of looms when you know how the shed is formed in them. In *countermarch looms* you can tie shafts to a raising or lowering position independently of each other. In *counterbalanced looms* two shafts are connected and when one shaft goes down the other goes up. In *table looms* and *jack looms* shafts only rise. In addition, many different systems can be used to form a shed. In Finland looms are mostly countermarch looms.



In countermarch looms the shafts with a black square in tie-up rise. The cord is tied from the treadle to the lower lam (lifts the shaft) where the square is black and from treadle to the upper lam (lowers the shaft) where the square is blank.



In a table loom the shed is formed by lifting the shafts independently.

Other loom types:

In counterbalance looms the cord is tied from the treadle to the shaft. When pressing the treadle the shaft goes down, and therefore the cord is tied at the blank squares.

Jack looms have only rising shafts, and the cord is tied only at the black squares. There is no cord tied in the blank squares.

In Finland we also have looms where the shed is formed only with lowering shafts. When pressing the treadle the shaft goes down and therefore the cord is tied at the blank squares.

COUNTERMARCH LOOMS

1. pick

1. treadle on the left

The shafts 3. and 4. (= first in front) rises when pressing the treadle 1. The warp ends on those shafts rises.

TABLE LOOMS

1. pick

3. ja 4. lever on the right

The shafts 3. and 4. (= first in front) rises when lifting the levers 3. and 4. The warp ends on those shafts rises.

In a table loom the shed is formed by lifting the desired shafts one by one. In a counter-march loom the shaft either rises or lowers depending on how the cords are tied. In a draft for a table loom the drawn line connects the shaft and the lever lifting it.

In a counter-march loom the shafts which have the black square on the same row in tie-up rise. You can see from the tie-up which shafts to lift when weaving on a table loom.

The threading must be the same as in the counter-march looms to have right shafts up.

Counter-march looms

1. WEFT PICK

repeat

← 1. weft pick.

Press the treadle 3 for the 1. weft pick. Shafts 1 and 3 rises.

Table looms

1. WEFT PICK

repeat

← 1. weft pick.

Lift the levers 1 and 3 for the 1. weft pick. Shafts 1 and 3 rises.

Counter-march looms

2. WEFT PICK

repeat

← 2. weft pick.

Press the treadle 6 for the 2. weft pick. The shaft 1 (= hindmost) rises.

Table looms

2. WEFT PICK

repeat

← 2. weft pick.

Lift the lever 1 for the 2. weft pick. The shaft 1 (= hindmost) rises.

How to change the tie-up of the counter-march loom fit for a table loom

You can mark the lifting plan for a table loom from a counter-march loom tie-up. Mark the filled black squares (rising shafts) according to the treading order from the tie-up.

A. The column underneath the first pick (cross) of the treading order is the tie-up for the treadle. Mark the black squares from it as the rising shafts to a lifting plan for a table loom.

B. The column underneath the second pick (cross) of treading order is the tie-up for that treadle. Mark the black squares from that column as the rising shafts to a lifting plan for a table loom.

Mark all the picks from the treading order one by one in the same way as the rising shafts for table loom.

A. Counter-march looms

1. WEFT PICK

repeat

← 1. pick

press for 1. pick

Table looms

1. WEFT PICK

repeat

← 1. pick

B. Counter-march looms

2. WEFT PICK

repeat

← 2. pick

press for 2. pick

Table looms

2. WEFT PICK

repeat

← 2. pick

FROM OUR READERS



Here is a photo of my sauna seat covers I wanted to share with fellow weavers. I found an old 40 cm cotton twine warp when I was cleaning out my closets, and decided to weave it with cotton yarn found at a thrift store.

I started and finished the covers by weaving one width of a bias band with a cotton twine yarn (same thickness as the warp). The ends are then easy to fold under the bias band. I also had some scrap yarns left from other projects: colour is not essential as the folded end is hidden. I machine washed it in 60°C even though the recommended temperature was 40°C. The cover dried fast, it didn't even shrink and the colours didn't come out!

Hope someone else finds inspiration from these easy and durable sauna seat covers, perhaps as a housewarming gift.

Waiting for the next issue, *Pirkko*

REED CONVERSION

Metric	Imperial
Dents per 10 cm	Dents per Inch
60	15
50-45	12
40	10
30	8
25	6
20	5

There are small inaccuracies in the conversions from metric unit reeds to imperial units reeds.

UNITS

1 inch (") = 2,54 centimetres (cm)
1 yard (yd) = 0,914 metres (m)
1 ounce (oz) = 28,35 grams (g)
1 pound (lb) = 0,454 kilograms (kg)
1 cm = 0,394"
1 m = 1,094 yd
1 g = 0,035 oz
1 kg = 2,205 lb

YARNS

Lankava Oy +358 (0)6 434 5500 www.lankava.fi
Lappajärven Värjäämö Oy +358 (0)40 838 5449 www.lappajarvenvarjaamo.fi
Novita Oy +358 (0)9 613 176 www.novita.fi
Taito Pirkanmaa Oy www.taitopirkanmaa.fi/kauppa
Garnhuset i Kinna, Sweden www.garnhusetkinna.se

Weaver's Library

KANKAANRAKENTAJAN OPAS

This guide (in Finnish) for dressing a loom is a popular textbook on the practical work involved in weaving. The guide includes clear instructions for winding the warp, beaming and tying up the treadles, and tips for actual weaving. 52 pages. A basic guide to keep by your loom. Price €15.80



KANKAANRAKENTAJAN SIDOSOPPI

This guidebook (in Finnish) on the theory of fabric structure includes the basics of fabric structure and the most common weave types for floor looms. 68 pages. Price €18.90





*In the next
issue..*

The weft can be woven! These woven stripes we used into the wide bed cover.

***The Winter issue 4/2021 will
be published in November***

www.mallikerta.fi

On our website, you can order single issues or subscribe to the full volume of the Weaver's Pick magazine, or order back issues from previous years. If you wish, you can also order the guidebooks (in Finnish).

Please make sure to let us know your new address. You can contact us by sending an email, via the website or by using the form.

SUBSCRIPTION PRICES

Full year 2022:
Europe 2022 €46,30 /Four issues
The rest of the world 2022 €52,10 /Four issues

The full year subscription includes four issues.
The invoicing period is a full year. A continuing subscription will automatically continue the following year. The digital form is included in the subscription.

SUBSCRIBER SERVICE

Contact information: Mallikerta MH
Vanhamaantie 3-5 A6, 47200 ELIMÄKI, FINLAND
theweaverspick@mallikerta.fi
www.mallikerta.fi
Tel. +358 40 170 2007 (Mon-Fri 9:00-17:00)
Publisher: Mallikerta MH



The Weaver's Pick

A magazine full of ideas for weavers

Mallikerta

The Weaver's Pick magazine

Vanhamaantie 3 - 5 A 6

47200 ELIMÄKI FINLAND

Standard
postage

I WOULD LIKE TO SUBSCRIBE TO
the Weaver's Pick magazine

for myself as a gift

VOLUME 2022
(1-4/2022) subscription to Europe €46,30

VOLUME 2022
(1-4/2022) subscription outside Europe €52,10

My new address as of ___/___2021

I wish to cancel my subscription at the end of the period I
have paid for.

SUBSCRIBER/NEW ADDRESS

Name

Street address

Postal code and town/city

Telephone

Email

RECIPIENT OF A GIFT SUBSCRIPTION/MY OLD ADDRESS

Name

Street address

Postal code and town/city

Telephone

Email



The Weaver's Pick

*A magazine full of ideas
for weavers*

Follow us on sosial media!



[instagram/mallikerta](https://www.instagram.com/mallikerta)



[facebook.com/mallikerta](https://www.facebook.com/mallikerta)



[pinterest.com/mallikerta](https://www.pinterest.com/mallikerta)

www.mallikerta.fi

www.theweaverspick.com



ELEGANT AND STUBBORN LINEN

Sturdy linen is a unique yarn to weave with. It's not elastic yet it's flexible. It's shiny yet it's crinkly. Use these attributes in weaving. Every other yarn in the white rug is linen cord, which emphasizes and strengthens the wave pattern. The beautiful natural colour of linen is combined to black and white in the towels. The colour combination is timeless in it's beauty.