

Price € 9.10 incl. VAT

mallikerta

The Weaver's Pick

A magazine full of ideas for weavers ~~~~~ WINTER 4 | 2019

WARMTH FOR WINTER

*Felted wool roving
blanket*

10

RUGS

*Light checks and
firm stripes in the
same warp*

28



The Weaver's Pick

A magazine full of ideas for weavers

In this issue

Weave a blanket in beautiful plant dyed colours

6

Wool roving throw

”

10

Weave two blankets and felt only one and leave the other as a light thin throw.” s. 14

Twist some yarn as a weft for a linen room divider

22

Merry poppana stripes

”

You get a smooth velvet surface if you don't let the poppana weft get spiralled.” s. 18

16

WINTER
4/2019

THROWS AND BLANKETS

- A DYER BLANKET** 6
Blanket of natural dye
- ROVING THROW BLANKET** 10
Throws woven into the cotton warp

TEXTILES FOR THE HOME

- CHRISTMAS LIGHTS** 16 A
A table runner with bright stripes
- CRISTMAS SHEAF** 20
A table runner with overshot pattern
- TURQUOISE SKY** 22
Weave a transparent room divider.
Spin the pattern weft!
- CHRISTMAS CAROL** 34
Threading as a melody

RUGS

- PULSE RUG** 28
Firm striped rag rug
- PATCHWORK RUG** 31
Light checkered rag rug, woven in the same warp
as the Pulse-rug.

ADDITIONAL ITEMS

- Calculating the amount of yarn needed with tex and Nm
number systems 6

EDITOR-IN-CHIEF Marjatta Hirvi
LAYOUT Marjatta Hirvi
PATTERN EDITING Marjatta Hirvi, Kirsi Reilin, Kirsi Vakkari
PUBLISHER Mallikerta MH

CONTACT INFORMATION Mallikerta MH
Vanhamaantie 3-5 A6, 47200 ELIMÄKI,
FINLAND
toimitus@mallikerta.fi

CUSTOMER SERVICE www.mallikerta.fi
Tel. +358 40 170 2007

PRINTING HOUSE Painotalo Plus Digital

The Weaver's Pick magazine is published four times a year. Past issues are available from the publisher. The magazine accepts no responsibility for any typographical errors or other inaccuracies in the content that may cause our readers inconvenience, loss of working time or financial damage. The commercial use of the weaving patterns and the sharing of designs online is forbidden.

38th volume 2019
ISSN 0782-1530



Wool in different forms

I confess, the last few months have been far too busy. The implementation of the Digital magazine and the new website has taken time from weaving, which is my most beloved job and the heart of this magazine. Now that the website and the Digital magazine are ready for the final touches, I have time to sit down on the weaving bench. I look forward to those peaceful moments that all the handweavers will surely recognize!

In addition to Kirsi Reilin this autumn, the patterns of the magazine were also woven by Kirsi Vakkari. With these two weavers, beaters in the looms have been all the time in motion. During the autumn, different kind of cloths has been rolled on the beam. The traditional Christmas Poppana had to be woven without a doubt, also new rug designs. This time, the winter's warp for rag rugs is tied as a cradle weave. Kirsi Vakkari weaved with a confident hand and beautiful colours in this same warp both a thick and a thin rag rug.

In the winter, the warmth and softness of wool seems attractive. This time, wool has been thrown into the shed in other forms than normal yarn. The felted throw is woven with a thin wool rovings and a spun yarn of wool-silk fibers is a pattern weft in the room divider.

The transparent weaves are one of my favorites. I would like to bring a new look to them so that they are not only seen as a past, old weavings. Kirsi Reilin caught my thoughts precisely and spun merino wool-silk weft yarn for a long white room divider. The lightness of a coarse linen weave and the softness of the wool are combined in a natural way. Warp and weft yarns were also reformed. They are no longer the same very thin linen yarn we used in transparent window hangings, but half a stronger linen. Take a spindle and try spinning!

Peaceful Winter Season for all weavers and many nice weaving moments! *Marjatta*



DESIGN OF PATTERN Kirsi Reilin WEAVER Kirsi Reilin

Take your plant dyed wool yarns in use

From dyepot to the loom

WHAT SHOULD I WEAVE

Dyeing with plants and mushrooms is so much fun and enjoyable that you can easily dye a large amount of yarns even during one summer. A suitable use for yarns is a blanket. The size is adjustable according to the amount of yarns in use, and the colours come out brightly. If there are not enough yarns for the blanket, you can weave a smaller throw or a scarf.

We have placed the circle balls of dyed yarn on the table and pencil crayons are ready for stripe designs - all set to start planning what to weave. The reddish yarns are dyed with mushroom *Cortinarius sanguineus*, yellow yarns with lily of the valley leaves, tansy and skins of onion. The lighter red yarns are from afterbath of the mushroom *Cortinarius sanguineus*.

After a one dye bath there can be still a vast amount of colourant in the bath. The bath can give colour from the second and even from the third bath to the yarns. Don't miss this easy chance to get hues of colour matching perfectly together. Scheming stripes for blanket is easy when you have colours close to each other.

WHERE SHOULD I START

Place the yarns on the table, admire the shades and seek the right colour combination and order. What colour there is plenty, what is less. Is there some colour enough for the background colour? ▶





Are the stripes in symmetric or asymmetrical order? Choose the warp yarns with an equal strength and weave with the same yarns. There can be small differences in the strength.

First you must calculate what size of a blanket there is yarn for. Calculating is easy if you have written down the quality and the strength of the yarn. A dyeing process can take all of your attention and notes can be forgotten. In this case you can estimate the amount of yarns and calculate for how large weave you can reach with them.

You can for example take a specific length of the yarn, weight it and calculate the length of the whole lot you have that yarn for use. By dividing the length of the yarns in the lot with the length of the warp you get the number of the warp ends it is enough for. By dividing the number of the warp ends with the density of the warp you find out for how many centimeters it is enough. Note please that you can't calculate the exact amount from a small unit of yarns.

If you know the tex-number or the Nm-number of the yarn it is easy to count how much yarn there is in a one lot of yarn.



CALCULATING THE AMOUNT OF YARN NEEDED WITH TEX AND NM NUMBER SYSTEMS

Tex-number

Tex-number tells the weight of 1 km (1000 m) of this yarn in grammes. The bigger the number, the thicker is the yarn.

$$\frac{\text{width of the warp/strip(cm)} \times \text{density} \times \text{length (m)} \times \text{tex}}{1000} = x \text{ g}$$

x g = how many grammes do we need for the warp or the stripe.

The number of the fibres is multiplied by the amount of fibres, e.g. tex 100 x 4 = 400.

1000 m = 400 g (1 km = 400 g).

Nm-number

Nm-number tells how many meters there are in 1 kg of the yarn (= how many meters there are in 1 gramme) The bigger the number, the thinner is the yarn.

$$\frac{\text{width of the warp/strip(cm)} \times \text{density} \times \text{length (m)}}{\text{Nm}} = x \text{ g}$$

x g = how many grammes do we need for the warp or the stripe.

Number of the yarns plied together (=fibres) is divided by the amount of fibres, e.g. Nm 10/4. 10 : 4 = 2,5.

1 kg = 2,5 km (1 g = 2,5 m). NB. Sometimes the amount of fibres is marked before the slash 4/10.



DESIGN OF PATTERN **Kirsi Reilin** WEAVER **Kirsi Reilin***Blanket of natural dye**Finished size 104 x 156 cm + fringes á 10 cm*

A Dyer blanket 3701

The warp Naturally dyed wool yarns, approx. 2300 m/1 kg
(for example Esito Worsted Wool Blanket Yarn,
tex 104x3)

Warp width 115,4 cm
density 3,5 threads/cm
number of warp ends 404
length 2,4 m
weight 426 g

The weft Naturally dyed wool yarns, approx. 2300 m/1 kg
amount of yarn needed approx. 290 g

Reed 35/1

Weave Warp faced twill



DESIGNING

Arrange the yarns in groups according to the colour for planning the stripe order. Estimate and calculate the need of the yarn. Remember to allocate yarns for the weft.

Weft yarn can also be different colour as in the warp.

WEAVING INSTRUCTIONS

In this design, we will use the warp only for one blanket, so the loom waste can be used for fringes at the very beginning and the end. You can weave with the same colour order as in the warp at the both ends and add some wider stripes in the middle of the blanket.

COLOUR STRIPES IN THIS WARP

dark edge 52 threads
red stripes 105 threads
middle 90 threads
red stripes 105 threads
dark edge 52 threads
404 threads in total ▶



Warp-faced side
up during weaving

Weft-faced side
up during weaving

The weave in the blanket is a three-by-one twill. The warp colours dominate on the other side of this twill and on the other side the weft colours. This warp is tied up as a warp-faced twill. All the enjoyable colours of the warp are on your sight while weaving.

The warp can be woven also as a weft dominated. When the warp is wound of a single colour and weft has multiple colours, the design of colour stripes is on the right side of the weave. Pressing down the treadles is lighter when weaving with the weft-faced weaves. Because the woollen yarn is light and the warp tension is moderate, this is not a significant issue in this project.



INSTRUCTIONS FOR WINDING THE WARP

Edge

4 x 13 threads brown stripes

Red stripes

14 threads dark orange
 14 " light orange
 28 " red
 28 " pale red
 21 " grayish red

Middle

14 threads gray
 3 x { 14 threads light apricot
 2 " light red
 14 threads light apricot
 14 " gray

Red stripes

21 threads grayish red
 28 " pale red
 28 " red
 14 " light orange
 14 " dark orange

Edge

4 x 13 threads brown colours
 404 threads in total.

WARP COLOUR ORDER

Beginning (53,5 cm)

3,5 cm }
 3,5 cm } brown stripes
 8 cm }
 4,5 cm brownish red
 5 cm light orange
 8,5 cm red
 8,5 cm pale red
 6,5 cm grayish red
 3,5 cm gray

Middle (68 cm)

10 cm light apricot
 2 threads pale red
 17,5 cm light apricot
 2 threads pale red
 10 cm light apricot
 2 threads pale red
 17,5 cm light apricot
 2 threads pale red
 10 cm light apricot

Weave the other end as reversed.

The woven length is 176 cm.
 Density of the weave is 3,5 threads/cm. Amount of weft yarn needed 290 g.

FINISHING

The warp ends are finished with knots familiar with a traditional "Fransu" fringes. Tie with the knot A and finish with knot B at the end. The space between the knot rows is 2 cm.

There are only two kind of knots in Fransu fringes. The knot A is used when two threads are tied together and the knot B when several threads are tied together (and in a multicoloured patterns also with two threads to have colours in right order).



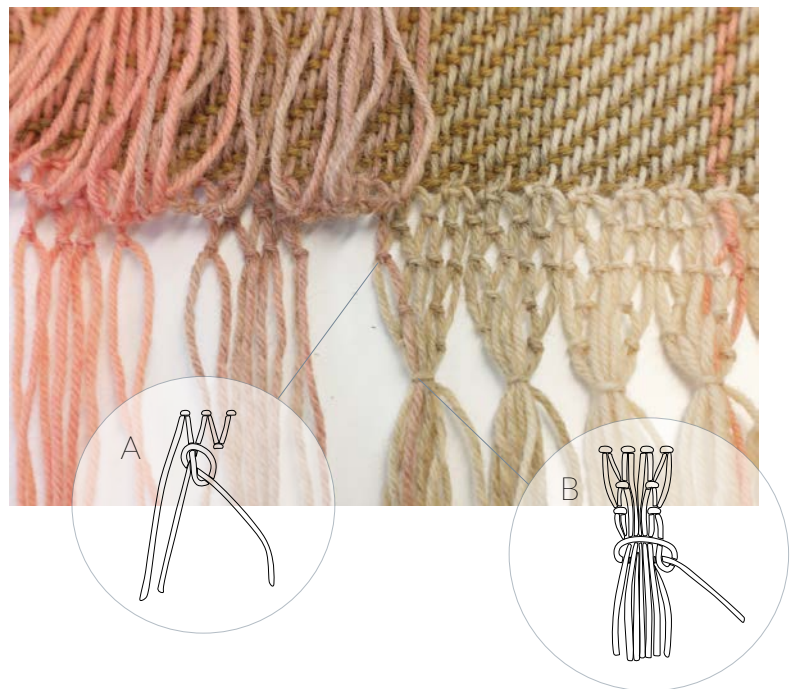
Finish the blanket with a lace-like fringe called "fransu" in Finnish. The technique is simple, the fringe is made only with two different kind of knots. Long and decorative fringes were normally made separately and added to the cloth edges, but now in this blanket we knotted a simple pattern with the warp ends.

Knot A

Take two threads of adjacent pairs between left hand thumb and index finger. The thread from the right hand is crossed above the left hand thread. Make a loop with the left hand thread over the threads and pull the thread end under the threads through the loop. Support the threads cross with left hand thumb and index finger and pull with the right hand to tighten the knot at the exact place.

Knot B

Make a loop with the right hand thread over the threads and pull the end under the threads and through the loop. Tighten.



Knot a lace-like Fransu fringe

1. Knot the first row right at the edge.
2. In the second row leave out the out most thread of the pairs from the work. Knot the second thread of the first pair and the first thread of the second pair with Knot A. Continue the row to the end by knotting together the two threads of adjacent pairs. The last thread at the edge is unknotted.
3. In the third row all the threads are knotted.
4. Divide the threads in groups of four pairs (8 threads). In this blanket there are four leftover threads, double threads two times at the edges or four times in the middle.
Make only two knots with the second thread of the first pair and the first thread of second pair on both edge of the group.
5. Make again only two knots with the first thread at the edge and the second thread on both edge of the group.
6. Tie all threads together with the Knot B. Tie all the groups of 8 threads at the same way.
7. Cut the fringes to an even length.

What a beautiful fringe!



DESIGN OF PATTERN Marjatta Hirvi WEAVER Minna Lappi-Suomalainen

*Size off the loom 139 x 200 cm**Finished size 96 x 155 cm*

Roving Throw blanket **3702**

Felt in the washing machine or leave as a lightweight blanket!

The felted blanket woven with wool roving into the cotton warp is durable enough even for outdoor use. Place it on the sled to keep a toddler warm or keep on the veranda bench for chilly days.

Weave two blankets and felt only the other. The one not felted is thin and light to drape over legs when having a nice warm glogg on the couch. The throw blanket is as piece of charming home décor. The combination of a thin cotton warp and a light wool weft with varying shades is charming and stylish.

The warp Cotton 8/2, tex 74 x 2, 1 kg = approx. 6800 m
 Warp width 139,3 cm
 density 7 threads/cm
 number of warp ends 975
 length 5,2 m
 amount of yarn needed 800 g

Reed 70/1
 Weave Combined 3-shaft twill
 The weft Wool roving, 2-ply

INSTRUCTIONS FOR WINDING THE WARP

780 threads black
 195 threads dark brown
 975 threads in total

AMOUNT OF WARP YARN NEEDED FOR 5,2 meters

Cotton 8/2, tex 74x2, 1 kg = approx. 6800 m
 black 655 g
 dark brown 145 g

You can also wind the warp only with a black yarn. If you have favorite colours for the weft, wind the 195 threads stripe with colour adapt to those. ▶





AMOUNT OF WEFT YARN NEEDED

Wool roving, gradient shades, 2-ply, Pirtin Kehräämö, 1 cake is approx. 150 g

Grey-black throw:

colour Kaski, grey-black 415 g

Red-black throw:

colour Karpalo, red-black 250 g,

and one solid colour red 100 g

Very thin wool roving is an unspun yarn made from Finnish lamb wool. Grey-black colour "Kaski" is undyed, it is created by mixing only natural wool shades.

WEAVING INSTRUCTIONS

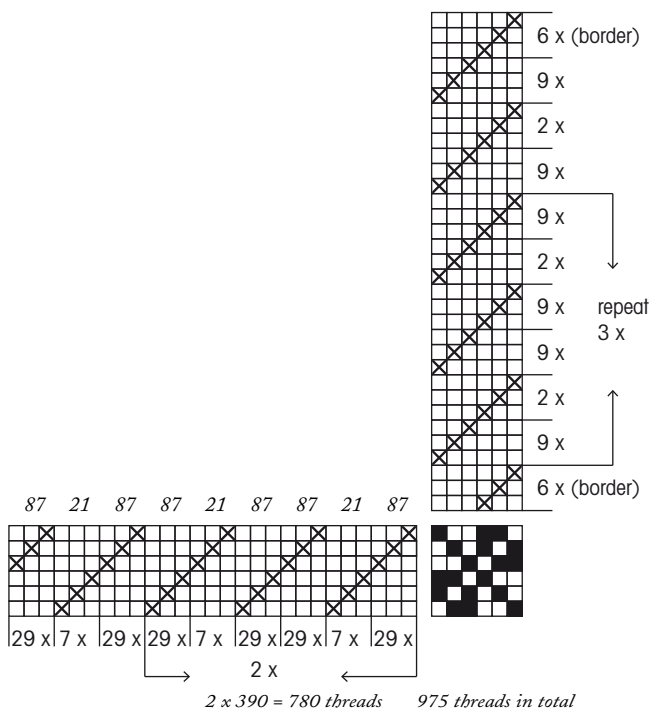
Divide the wool roving to 1-ply for the borders. Weave 6 cm (18 picks) for the borders according to the treadling order. Weave the throw fabric with 2-ply wool roving according to the treadling order. The density of the weave is 2 threads/cm.

Do not use a stretcher!

DIMENSIONS

The red-black throw size off the loom is 139 cm x 202 cm and felted size is 96 cm x 155 cm. The shrinkage is 23 % in length, 30 % in width and 47 % in square meter.

the grey-black throw size of the loom is 130 x 226 cm. This throw is left as it was after removing off the loom. ▶





These felted throws are woven by Minna Lappi-Suomalainen as a part of her textile examination at Ekami Hamina campus to Mallikerta as a client. The red-black felted throw is on the table under the inspection. Teacher Liisa Uimonen (on the left) and Minna Lappi-Suomalainen.

FINISHING THE FABRIC BEFORE FELTING

Sew the both ends carefully with 3-step zigzag stitches twice to avoid unravelling.

THE FELTING

Wash the fabric in a cold wash 30°C. The washing time is one hour. Pull the fabric into shape while it is still damp and then leave until completely dry.

"We had two average size towels in the wash and a small amount of liquid detergent. After the wash the throw was quite wrinkled and creased, but we pulled it out into the right shape" - Weaver.

FINISHING

Sew the borders by hand using the same cotton yarn as in the warp.

OBSERVATIONS OF THE WEAVING PROJECT

- Weaving with the wool roving was difficult as the thread got thinner and broke if you pulled it too much or if it got stuck into loom parts.
- The weave was not pulled in from the edges even the stretcher was not in use.
- Thickness in wool roving cakes varied occasionally but the weave was still even and smooth.

An interesting weave, you could weave for example a poncho in this similar way. - Weaver Minna Lappi-Suomalainen







DESIGN OF PATTERN Kirsi Reilin WEAVER Kirsi Reilin

Red striped poppana table runner
 Finished size 40 x 120 cm

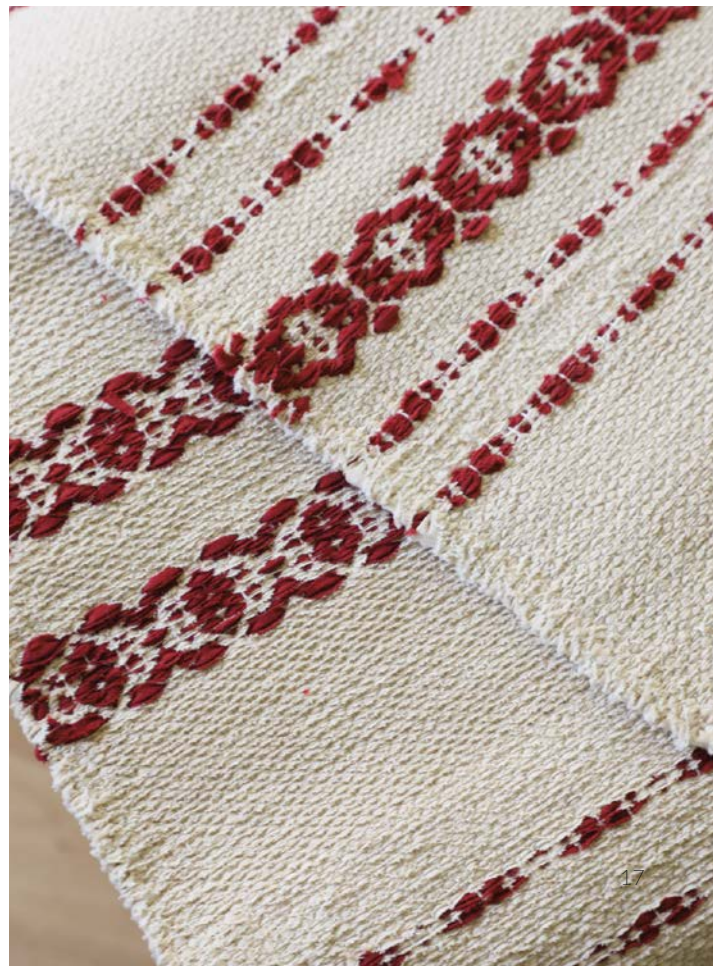
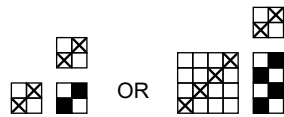
Overshot poppana table runner
 Finished size 40 x 122 cm, on the page 21

Christmas lights

3703

The warp 6-ply Cotton Twine, tex 30x6, 1 kg = n. 5300 m
 Warp width 42,2 cm
 density 4 threads/cm
 number of warp ends 169 + 4
 length 10 m
 amount of yarn needed 325 g

Reed 40/1
 Weave Plain weave
 The weft Poppana



WEAVING INSTRUCTIONS

Start and finish by weaving a few shots of extra weft. This will support the poppana while you weave, and the weft will be undone later. Leave 10 cm for the fringe on both ends.

Start and finish the poppana weave by shooting a few throw with 6-ply cotton twine (= same as the warp). Weave the table runner according to the colour stripe order given on the next page.

AMOUNT OF WEFT NEEDED

Poppana, width 10 mm, Poppanavakka
 5704 bright red (kirkas punainen) 305 g
 7206 lion (leijona) 80 g
 3303 sunflower (auringonkukka) 25 g
 7201 light sand (hiekan vaalea) 25 g

FINISHING

Tie the warp threads with tight overhand knots as you undo the extra weft. Cut the fringe to an even length. ▶



STRIPES

7 cm bright red
 4 throws lion
 8 " bright red
 4 " lion
 8 " bright red
 4 " lion
 6 " bright red
 4 " sunflower
 6 " bright red
 4 " sunflower
 4 " bright red
 4 " light sand
 4 " bright red
 4 " sunflower
 6 " bright red
 4 " sunflower
 6 " bright red
 4 " lion
 8 " bright red
 4 " lion
 8 " bright red
 4 " lion
 = *Stripe 1*
 --
 8 cm bright red
 --
 8 throws lion
 4 " bright red
 6 " lion

4 " bright red
 4 " lion
 = *Stripe 2*
 --
 6 cm bright red
 --
 8 throws lion
 4 " bright red
 6 " kulta
 4 " bright red
 4 " light sand
 = *Stripe 3*
 --
 6 cm bright red
 --
 8 throws lion
 4 " bright red
 6 " light sand
 4 " bright red
 4 " light sand
 4 " bright red
 4 " sunflower = *the middle*
 Weave the other end as mirrored
 (= continue
 4 throws bright red
 4 " light sand
 4 " bright red ...)

The woven length is 125 cm. ●

A VELVET SURFACE

Throw the weft into the shed without any twist. In this way you get a velvet kind of surface on the other side of the fabric and the other side is flat and smooth. In looms with an overhead beater the velvet side forms on the right side of the fabric. In looms with a beater fastened down to the cross beam the velvet side forms on the reverse side, as in the picture on the right.







DESIGN OF PATTERN Kirsi Reilin WEAVER Kirsi Reilin

*Overshot poppana table runner**Finished size 40 x 122 cm*

Christmas sheaf

3704

The warp 6-ply Cotton Twine, tex 30x6, 1 kg = n. 5300 m
 Warp width 42,2 cm
 density 4 threads/cm
 number of warp ends 169 + 4
 length 10 m
 amount of yarn needed 325 g

Reed 40/1
 Weave Overshot
 The weft Poppana

WEAVING INSTRUCTIONS

Start and finish by weaving a few shots of extra weft. This will support the poppana while you weave, and the weft will be undone later. Leave 10 cm for the fringe on both ends. Start and finish the weave by shooting a few throw with 6-ply cotton twine (= same as the warp). The plain weave ground weft is a light sand poppana and the pattern weft is a burgundy red poppana. The pattern weft is a single thread. The density in the plain weave is 6 threads/cm. The woven length is 125 cm.

AMOUNT OF WEFT YARN NEEDED

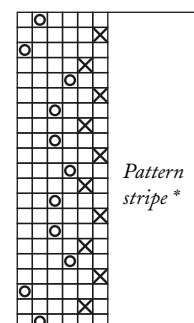
Poppana, width 10 mm,
 Poppanavakka
 7201 light sand
 (vaalea hiekka) 410 g
 5708 burgundy red
 (viininpunainen) 70 g

FINISHING

Tie the warp threads with tight overhand knots as you undo the extra weft. Cut the fringe to an even length. ●

STRIPES

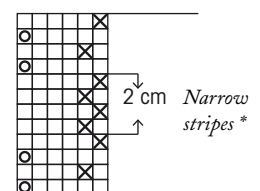
8 cm plain weave
Narrow stripes *
 2 cm plain weave
Pattern stripe *
 2 cm plain weave
Narrow stripes
 8 cm plain weave
Pattern stripe
 2,5 cm plain weave
Pattern stripe
 8 cm plain weave
Narrow stripes
 8 cm plain weave
Narrow stripes
 2 cm plain weave
Pattern stripe = the middle
 Weave the other end as mirrored.



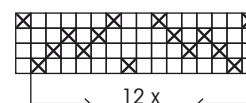
Treadling:

X = poppana "light sand"

○ = poppana "burgundy red"



Two outmost threads at the edges are double



1 l. 12 x 14 = 168





DESIGN OF PATTERN Kirsi Reilin, Marjatta Hirvi WEAVER Kirsi Reilin

A room divider
 Finished size 44 x 184 cm

Turquoise sky 3705

Be creative and try something new!

Now you can have all the colours and materials you love in your weave, only imagination is as a limit. Spin all your visions and thoughts into the pattern weft! The weft is best when it's bumpy and uneven, so this is a good opportunity to try spinning for the first time. Spin a yarn with fluffy lumps and thin spots and start to create.

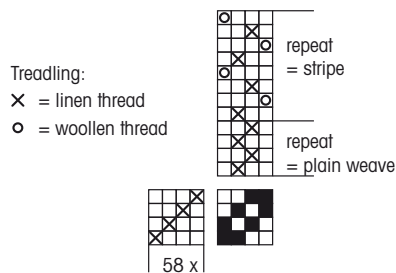


The warp Esito line linen yarn Nel 8, wet spun, ½-bleached, tex 206, 1 kg = n. 5120 m, Lankava
 Warp width 46,4 cm
 density 5 threads/cm
 number of warp ends 232
 length 4,8 m
 amount of yarn needed 218 g

Reed 50/1

Weave Plain weave and rep

The weft Esito line linen yarn Nel 8 and spun wool yarn





Weave using the ½-bleached line linen Nel 8 for the plain weave weft and spin wool yarn for the weft pattern. the density of the plain weave is 7 threads/cm, same as in the warp.

STRIPES

Start with 15 cm plain weave (including the border).

*

6 picks green-white wool yarn

2 cm plain weave

4 picks green-white wool yarn

2 cm plain weave

2 picks green-white wool yarn

--

6 cm plain weave

--

6 picks green-turquoise-white wool yarn

2 cm plain weave

4 picks green-turquoise-white wool yarn

2 cm plain weave

2 picks green-turquoise-white wool yarn

--

6 cm plain weave

--

6 picks turquoise-white wool yarn

2 cm plain weave

4 picks turquoise-white wool yarn

2 cm plain weave

2 picks turquoise-white wool yarn

--

6 cm plain weave

--

Repeat from the beginning* 3 x

Weave 9 cm plain weave at the end (including the border).

THE AMOUNT OF WEFT NEEDED FOR ONE DIVIDER

Esito line linen yarn Nel 8, wet spun, ½-bleached, tex 206,

1 kg = n. 5120 m, Lankava 75 g

Merino wool and merino wool+silk tops

for the green-white stripes: 29 g

for the green-turquoise stripes: 32 g

for the turquoise-white stripes: 31 g 92 g in total

Creafil yarn, Nm 35, 5 g mini reel = 90 m, Venne Colcoton

10-8035 green (Macy) 6 g

10-8032 blue (Milo) 6

Creafil yarn, Nm 24, 3 g mini reel = 90 m, Venne Colcoton

10-9007 white-gold (Dana) 13 g ▶

FINISHING

Spin the weft

Spin the weft yarn by hand from wool tops. Add in other fibres and effects according to your own taste and vision.

Kirsi mixed merino wool fibres of various colours and spun them into a yarn with a spindle. She added two thin and shiny Creafil yarns for a slight twinkling effect. The two-ply yarn with a loose twist leaves colours and the smooth wool structure visible.

Spin a small amount of the yarn and weave a few rows to see if it works out as wanted. The density of the plain weave is same as in the warp. The pattern weft alternates with the plain weave weft. Spin the yarn in a moderate thickness. The weave might get uneven and wavy if the pattern weft is too thick and heavy.

The thickness of the weft can vary, because in this divider the pattern is only a stripe running from one edge to another. The weft should be precisely in a thickness fitting between the two plain weave threads, if the pattern is consisting of many irregular parts.

WEAVING INSTRUCTIONS



Mix your own colours into the weft yarn. Add some sparkle effects !





Nb

You can weave instead of the spun yarn with a multiple yarns. Combine yarns with different thickness and colours.

Sew the ends with 3-step zigzag stitches. Sew the borders by hand using plied linen yarn. Fold the inside allowance in the same height as the border. Leave the ends open. The height of the finished border is 5 cm.

Steam the divider using an ironing cloth. Thread a thin but still firm rod in the top border and hang the divider from the ceiling. Thread curtain weights or a rod in the bottom border.

If the divider is especially uneven, steam or pre-moisten and press with the ironing cloth on a wide ironing board. Steam, iron and allow to cool. Iron throw the whole fabric and hang up with the weights in the bottom border. After the divider is straightened you can take the weights out.

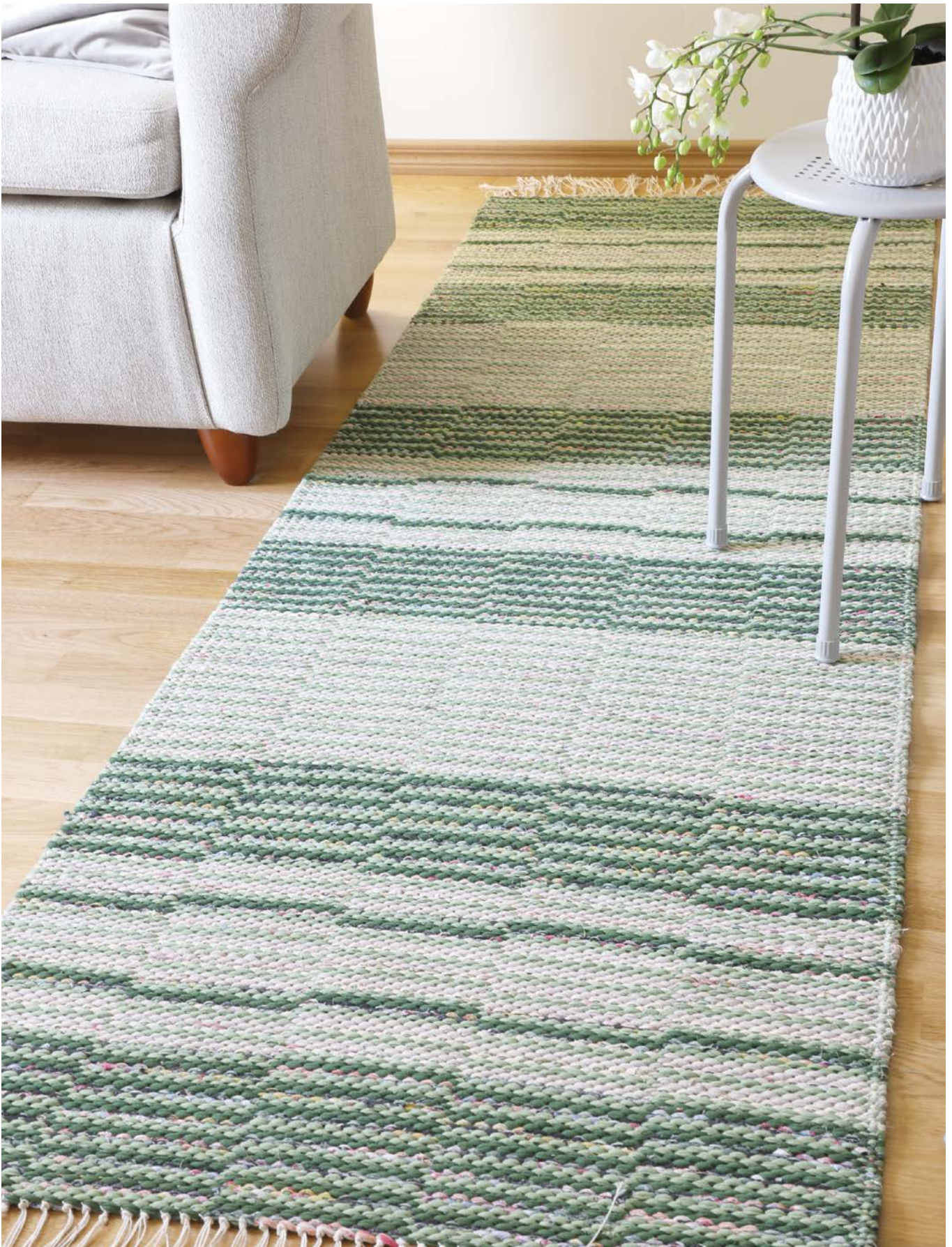
DRESS THE LOOM CAREFULLY

Keep the warp in tight when winding the warp on the beam and place enough the warp rods between layers of warp. - Keep a shaft stick or warp stick pushed at the point where the warp ends leaves the warp beam. - Check that the warp passes without hindrance from the warp beam through the heddles and the reed. - Use the temple. - Weave slowly enjoying of the peaceful moments. ●



Pull and mix the different colours with hands.





DESIGN OF PATTERN Kirsi Vakkari WEAVER Kirsi Vakkari

Finished size 73 x 215 cm

Pulse rug 3706

The warp 12-ply Cotton Twine, tex 30x12, 1 kg = n. 2560 m

Warp width 82 cm
 density 2,5 lankaa/cm
 number of warp ends 205 + 4 (double 2 edge threads)
 length 10 m
 amount of yarn needed 810 g

Reed 25/1
 Weave Crackle weave

FLOATING SELVAGES

Take the outer threads out of the heddle eye, or drop the heddle on the edge off the sprit on both sides. Shoot the shuttle through the shed over the level thread on the edge and bring it out of the shed underneath the thread on the edge to bind the edges neatly.

WEAVING INSTRUCTIONS

Leave around 13 cm of the warp at each end of the rug for the fringe. Start with a few shots of scrap weft to support the end of the rug. Weave with three shuttles according to the treadling instructions and the colour stripes order.

COLOUR STRIPES

Dark stripe: dark green T-shirt yarn (= shuttle 1) + green T-shirt yarn (= shuttle 2) + dark mottled cotton sheet cutted into 2,0 cm strips (= shuttle 3).

Light stripe: green T-shirt yarn (= shuttle 1) + beige T-shirt yarn (= shuttle 2) + light mottled cotton sheet cutted into 2,0 cm strips (= shuttle 3).

16 cm dark stripe
 5 cm light stripe
 2,5 cm dark stripe

FIRM STRIPES AND LIGHT CHECKS

At the first sight you wouldn't believe the green Pulse rug and the red checkered Patchwork rug are weaved in the same warp! Plain weave threadles are not in use in the green rug and they have been left out from the draft. There are two shafts for the plain weave in the Red Patchwork rug, but in the green rug they are not in use.

If you weave both patterns in the same warp, wind the warp with the number of warp ends given in the Patchwork rug. When you weave the green Pulse rug, drop the four heddles (4 + 2 threads = 6 threads) on the edge off the shafts on both sides. Thread again according to the Pulse rug threading order, remember the two edge threads are doubled at the both edges.

Almost 3D

A small "pulse" cross all the colour stripes at the same spot. The broken stripes develops the illusion of alternating low and high vertical levels.





8 cm light stripe
 2,5 cm dark stripe
 5 cm light stripe
 16 cm dark stripe
 28 cm light stripe
 Repeat from the beginning 1 time
 16 cm dark stripe
 5 cm light stripe
 2,5 cm dark stripe
 8 cm light stripe
 2,5 cm dark stripe
 5 cm light stripe
 16 cm dark stripe

Weave a light checkered rug and a firm striped rug in the same warp.

The woven length is 2,20 m.



AMOUNT OF WEFT YARN NEEDED FOR 1 RUG

T-shirt yarn (tricot weft)
 green 1,52 kg
 dark green 0,65 kg
 beige 0,59 kg

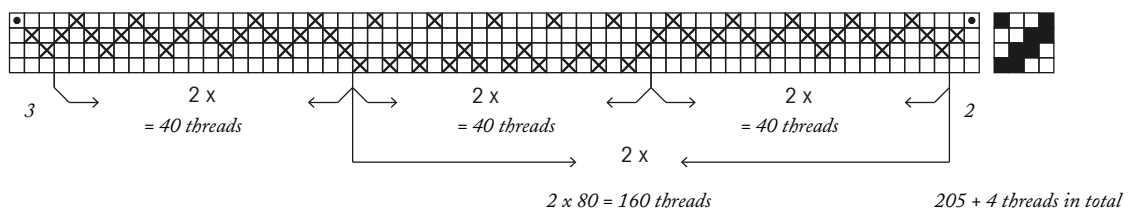
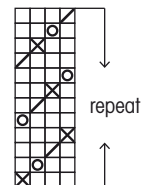
Cotton sheet strips, approximately 2,0 cm in width
 light mottled strips 0,40 kg
 dark mottled strips 0,36 kg

FINISHING

Tie the warp threads using tight weaver's knots as you undo the extra scrub weft. Tie again in overhand knots with 4 threads. Cut to an even length. ●

Threading:
 Two outmost threads on both edge are doubled
 ● = threads are out of the heddle

Treading:
 X = colour 3
 ○ = colour 2
 / = colour 1







DESIGN OF PATTERN Kirsi Vakkari WEAVER Kirsi Vakkari

Finished size 78 x 209 cm

Patchwork rug 3707

The warp 12-ply Cotton Twine, tex 30x12, 1 kg = n. 2560 m

Warp width 82 cm
 density 2,5 lankaa/cm
 number of warp ends 209 + 4 (double 2 edge threads)
 length 10 m
 amount of yarn needed 810 g

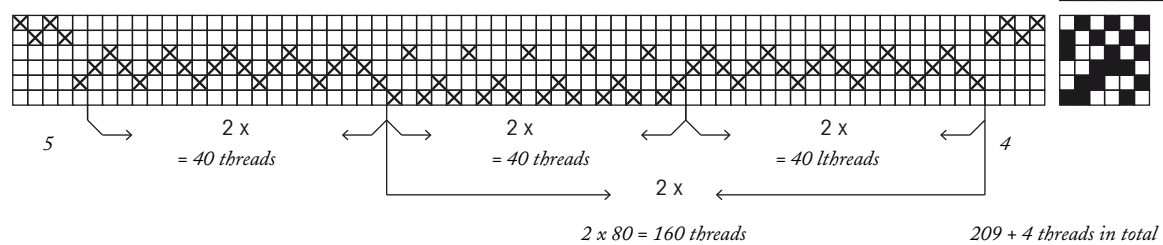
Reed 25/1
 Weave Crackle weave

PLAIN WEAVE AT THE EDGE

Shape the edges to a straight and firm line with plain weave. For that, add two shafts, and thread on those only the plain weave warp ends for the edges. You can weave the rug also with four shafts, but then there will be some longer weft floats on the edges.

Threading:

Two outmost threads at both sides are doubled.



WEAVING INSTRUCTIONS

Leave around 13 cm of the warp at each end of the rug for the fringe. Start and finish with 4 shots of cotton twine (same as the warp). Weave the rug according to the treadling order using the thin T-shirt yarn as plain weave weft and the cotton sheet strips as pattern weft.

The woven length of one square is 16,5 – 17 cm. The woven length of the rug is 218 cm.

AMOUNT OF WEFT YARN NEEDED FOR 1 RUG

T-shirt yarn (tricot weft), thin quality
burgundy red 1,418 kg

Cotton sheet strips, approximately 2,5 cm in width
red strips 383 g (= 77 g/1 row of squares)
brown strips 441 g (= 111 g/1 row of squares)
lilac strips 244 g (= 122 g/1 row of squares)
dusty rose strips 238 g (= 120 g/1 row of squares)
1306 g in total for one rug

The amount of the cotton sheet strips needed varies according to the thickness of the cut fabric. You'll need approximately 100 g for 1 row of squares.

The width of the cotton strips was approximately 2,5 cm.

FINISHING

Tie the warp threads in tight weaver's knots. Make a twisted fringe with 4 warp threads. ●

The rug is woven with the cotton sheet strips as the pattern weft and the thin T-shirt yarn as the ground weave weft. You can use the cotton sheet strips also in the ground weave, but then cut strips narrower as the pattern weft.



WARM COLOURED CHECKS

Weave a checkered rug with balmy red colours and peaceful squared pattern to bring warmth into the chilly winter days. This harmonious colour scale is woven mainly with brown red cotton sheet strips, but also with some bright mottled red and white cotton strips. The vivid red white checks bring up the rug rag look.

The warp threads can be seen clearly on every other square and some weavers might think that is unattractive. When the rug is on the floor, you won't notice them anymore.

The rug is thin and light weighted, but still firm and even. A cosy rug you can place in any room at home.





MALLISUUNNITTELU Marjatta Hirvi KUTOJA Kirsi Reilin

*Table runner**Finished size in width 21 cm*

Christmas Carol

3708

THREADING AS A MELODY

Three different colour threads are always in the same order in the threading, but it varies on which shaft they settle. Dark lilac, dark red and bright red threads rise up and lower down in the threading draft as tunes of melodies in a musical notation.

Pattern on the fabric seems to be complicated at the first sight, but it is woven only with four shaft and four treadles. For only the different colours forms the lines of the pattern, it is important that the warp ends are sett closely enough. The density of the warp is 15 threads/cm and in each dent isthree different colour thread. The reed is number 50/10 (there is 50 dents per 10 cm).

INSTRUCTIONS FOR WINDING THE WARP

The edges are wound with two threads and the middle with three threads at a time.

6 x 1 thread red (843) + 1 thread dark red (848)
= 12 threads

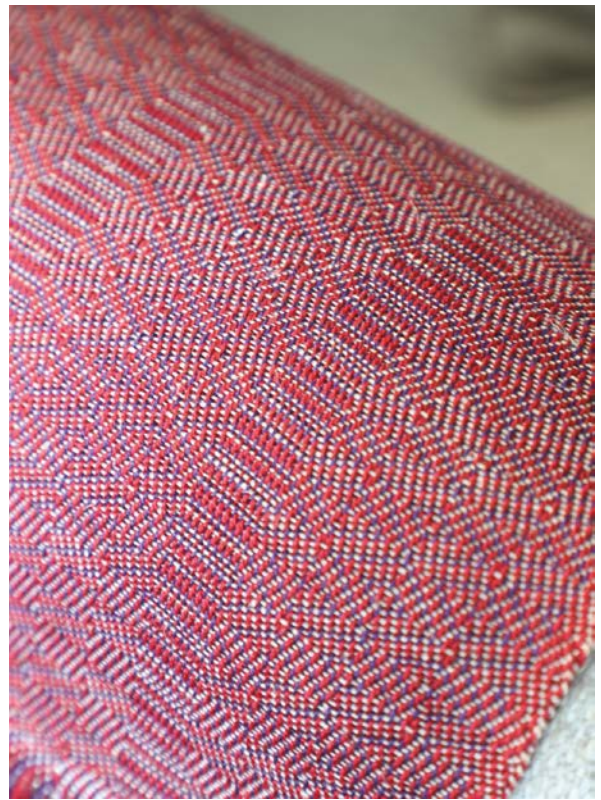
106 x 1 thread dark lilac (896) + 1 thread red + 1 dark red
= 318 threads

1 thread dark lilac

6 x 1 thread red + 1 thread dark red
= 12 threads

343 threads in total – 1 thread * = 342 (In threading leave the last warp end out of the heddle and out from the work for equalizing the thread count in the dents.)

342 includes double edge threads. ▶



SUITABLE ALSO AS A DECORATION FABRIC

We wove at the end of this warp a sample with unbleached linen weft. The colour structure expanded in the sparkling lines to multiple directions. We think this fabric would be a good choice as an upholstery fabric for chairs and sofas. You can also weave smart cushion covers to your home or as a present. Hope we would have had a longer warp! This fabric is so beautiful.

The warp Eko Mercerised Cotton 8/2, tex 74x 2,
1 kg = n. 6800 m, Garnhuset i Kinna

Warp width 22,6 cm
density 15 lankaa/cm
number of warp ends 340 + 2
length 3,8 m

Reed 50/3 (= three threads in one dent)
Weave Pointed twill

The weft Eko Mercerised Cotton 8/2,
Tow linen 8/1 or
Line linen 16/2.

AMOUNT OF WARP YARN NEEDED

Eko Mercerised Cotton 8/2, tex 74x 2 (1 kg = n. 6800 m)
Garnhuset I Kinna
843 red 67 g
848 dark red 67 g
896 dark lilac 60 g
194 g in total

Long cotton table runner

Finished size 22,5 x 120 cm

Weave the table runner with the red mercerised cotton 8/2 yarn according to the treadling instructions. The woven length is 135 cm. The density of the weave is 10 threads/1 cm.

AMOUNT OF WEFT YARN NEEDED

Eko Mercerised Cotton 8/2, tex 74x 2 (1 kg = n. 6800 m)
843 red 50 g

Linen table runners

Finished size 22,5 x 61 cm

Weave the table runner with linen yarn according to the treadling instructions. The woven length is 71 cm. The density of the weave is 8 threads/cm.

AMOUNT OF WEFT YARN NEEDED

for the red runner
Tow linen 8/1, tex 206
red 26 g

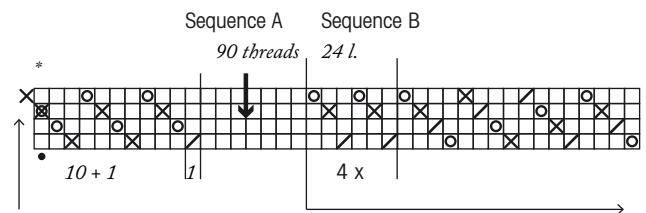
AMOUNT OF WEFT YARN NEEDED

for a lilac runner
Line linen 16/2, tex 103x2
dark lilac 25 g

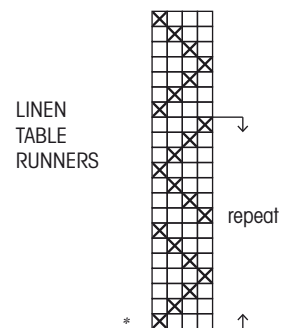
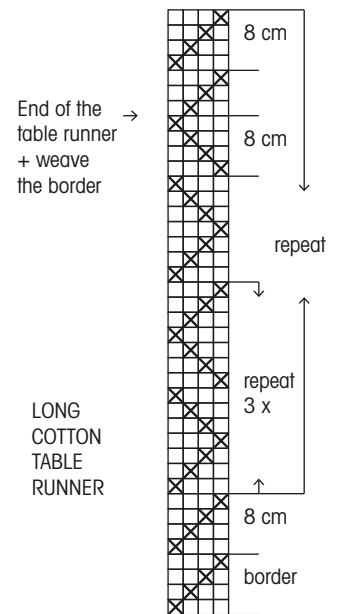


FINISHING

Sew the ends with 3-step zigzag stitches. Sew the borders by hand, the width of the finished border is 1,2 cm. ●

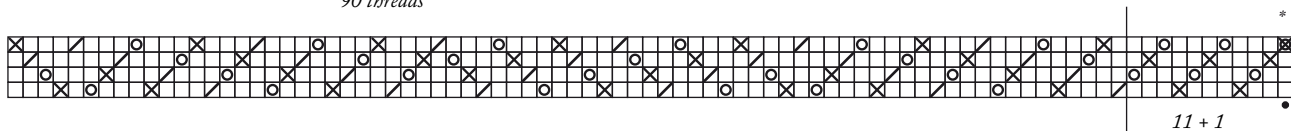


Take the last warp end out of the work, see instructions for winding the warp.



- Threading:
- × = dark red
 - = red
 - / = dark lilach
 - ⊠ * double the edge thread
 - = floating selvages

Sequence A
90 threads



2 x
2 x 114 = 228 threads

11 + 1

340 + 2 threads in total

- Click !

You can now read The Weaver's Pick on the screen

The Weaver's Pick is now also in a digital form. Read one article at a time or browse the whole online magazine. The digital form is included in all The Weaver's Pick subscriptions.

READ THE ONLINE MAGAZINE

After you have completed your subscription you get your own account. Go to the page My account on the Mallikerta website and give your Username and Password. After that you can go to the page Magazine and read all the articles and the online magazine.

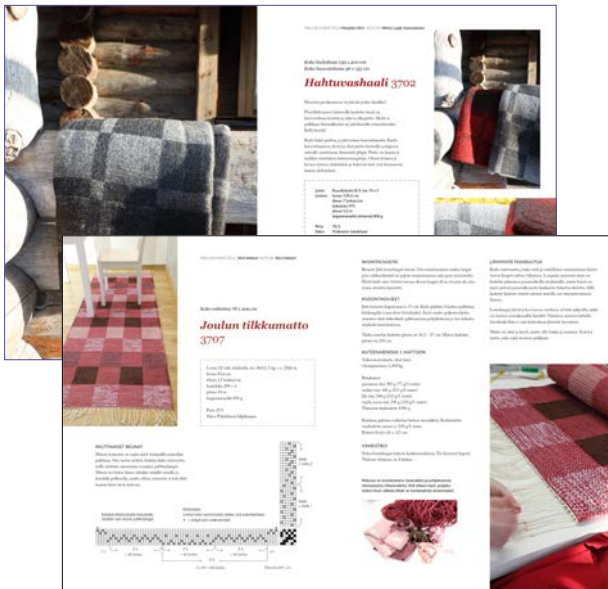
- You get your own Username and Password after the subscription into your email.

- In every article of pattern there is a link to the Online magazine (except two first ones available for every visitors at the site)

- You can print every pattern, you find a print-button in article.

- Change the language from the Menu.

The digital form is included in the subscription Volume 2020.



Please remember that sharing the designs online is forbidden

Subscriptions from website www.mallikerta.fi

All subscriptions and orders can be done by sending an email theweaverspick@mallikerta.fi

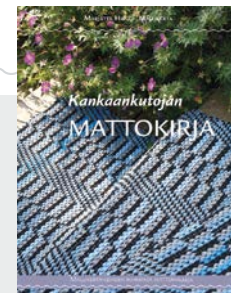
or by sending a letter to Mallikerta
Vanhamaantie 3-5 A6
47200 ELIMÄKI



KANKAANRAKENTAJAN OPAS
This guide (in Finnish) for dressing a loom is a popular textbook on the practical work involved in weaving. The guide includes clear instructions for winding the warp, beaming and tying up the treadles, and tips for actual weaving. 52 pages. A basic guide to keep by your loom. Price €15.80



KANKAANRAKENTAJAN SIDOSOPPI
This guidebook (in Finnish) on the theory of fabric structure includes the basics of fabric structure and the most common weave types for floor looms. 68 pages. Price €18.90



KANKAANKUTOJAN MATTOKIRJA
The most beautiful rug designs of the Weaver's Pick magazine in one book (in Finnish). The book includes the most popular designs over the years and the best weave patterns for rugs. 128 pages. Price €24.80



In the next issue..

Have fun with fringes. We knotted wool threads on a coarse linen weave, also some thin linen threads are added in the rya knots.

The spring issue 1/2020 is out on February

www.mallikerta.fi

On our website, you can order single issues or subscribe to the full volume of the Weaver's Pick magazine, or order back issues from previous years. If you wish, you can also order the guidebooks (in Finnish).

Please make sure to let us know your new address. You can contact us by sending an email, via the website or by using the form.

SUBSCRIPTION PRICES

Full year 2020:
Europe 2020 €44,70 /Four issues
The rest of the world 2020 €49,80 /Four issues

The full year subscription includes four issues.
The invoicing period is a full year. A continuing subscription will automatically continue the following year. The digital form is included in the subscription.

SUBSCRIBER SERVICE

Contact information: Mallikerta MH
Vanhamaantie 3-5 A6, 47200 ELIMÄKI, FINLAND
theweaverspick@mallikerta.fi
www.mallikerta.fi
Tel. +358 40 170 2007 (Mon-Fri 9:00-17:00)
Publisher: Mallikerta MH

The Weaver's Pick

A magazine full of ideas for weavers

Standard postage

Mallikerta
The Weaver's Pick magazine
Vanhamaantie 3 - 5 A6
47200 ELIMÄKI FINLAND

I WOULD LIKE TO SUBSCRIBE TO the Weaver's Pick magazine

for myself as a gift

VOLUME 2020
(1-4/2019) subscription to Europe €44,70

VOLUME 2020
(1-4/2019) subscription outside Europe €49.80€

My new address as of ___/___2020

I wish to cancel my subscription at the end of the period I have paid for.

SUBSCRIBER/NEW ADDRESS

Name

Street address

Postal code and town/city

Telephone

Email

RECIPIENT OF A GIFT SUBSCRIPTION/MY OLD ADDRESS

Name

Street address

Postal code and town/city

Telephone

Email



The Weaver's Pick

*A magazine full of ideas
for weavers*

Follow us on social media!



[instagram/mallikerta](https://www.instagram.com/mallikerta)



[facebook.com/mallikerta](https://www.facebook.com/mallikerta)



[pinterest.com/mallikerta](https://www.pinterest.com/mallikerta)

www.mallikerta.fi

TONES OF A WEAVER

Decorative pattern is weaved only with four shaft. Three different colour threads alternate in the warp always in the same order. Colours rise up and lower down in the threading draft as tunes of melodies in a musical notation.