

Price €9,40 incl. VAT

*mallikerta*

THEME: SCARVES AND BLANKETS

# *The Weaver's Pick*

*A magazine full of ideas for weavers* ~~~~~ WINTER 4 | 2020

TECHNICAL EXPERIMENT

*Slightly different  
stripe warp*

**14**

LARGE WOOL RUGS

*One motif fills  
the entire rug*

**24**





# *The Weaver's Pick*

*A magazine full of ideas for weavers*

*In this issue*

***Colours of the black rag rug wefts are fixed in random order***

**30** ”

*Finish the rug with elegant macrame fringes*

**12**

***Warm blanket: Intermittent threading for wide twill stripes***

***Pick up plain weave at the ends***

**10**

”

*We wanted the gray large scarf to have an old fashioned style*

***Separately wound warp stripes***

**14**

WINTER  
4/2020

## SCARVES

- SCARF FOR A PRESENT** 4  
Luxuriously soft silk woolly scarf for men.
- OLD FASHION SCARF** 14  
Separately wound colour stripes are positioned in their correct places when the yarns are being pre-sleyed into the raddle.
- STASH WARP SCARF** 34  
A multicoloured tabby scarf woven in small table looms. The warp has yarns of different quality and colours.

## BLANKETS

- STAR MOMENT** 8  
Soft waffle weave blanket.
- CORKSCREW STRIPE** 12  
Weave the intermittent twill blanket with thin or thick weft.

## HOME DÉCOR TEXTILES

- TWINKLE RIB RUNNER** 20  
Red ribbed runner for Christmas.

## RUGS

- COMPASS SUMMER AND WINTER RUGS** 24  
A single large starlike motif fills the entire rug.
- FORTUNE STRIPE RAG RUG** 30  
The colour stripes are woven in random order.
- OMBRE STRIPE RAG RUG** 32  
In the purple rag rug the colours lighten towards the centre.

EDITOR-IN-CHIEF Marjatta Hirvi  
LAYOUT Marjatta Hirvi  
PATTERN EDITING Kirsi Reilin, Kirsi Vakkari, Maarit Windt  
PUBLISHER Mallikerta MH

CONTACT INFORMATION Mallikerta MH  
Vanhamaantie 3-5 A6, 47200 ELIMÄKI,  
FINLAND  
toimitus@mallikerta.fi

CUSTOMER SERVICE www.mallikerta.fi  
Tel. +358 40 170 2007

PRINTING HOUSE Painotalo Plus Digital

The Weaver's Pick magazine is published four times a year. Past issues are available from the publisher. The magazine accepts no responsibility for any typographical errors or other inaccuracies in the content that may cause our readers inconvenience, loss of working time or financial damage. The commercial use of the weaving patterns and the sharing of designs online is forbidden.

39th volume 2020  
ISSN 0782-1530



### *The journey of a rag rug*

There it is, a finished rag rug! There's an exciting moment ahead when we are able to see what the rug looks like on the floor. The sun glistens conveniently from the window to the looms. Kirsi cuts off the warp ends and takes the rug out of the loom. The rug is rolled out on the floor to be admired and we agree it turned out beautiful. From there on, the rug pattern continues its journey to the magazine.

The story of a weaving pattern begins with an idea that may have been on my mind for years. Or the story of the model can begin in such a way that, when the magazine folds, I notice that it lacks an interesting model. Then we design and weave the pattern at the last minute. There are a lot of large and multi-soft models in this issue, and I thought it also needed a project suitable for small looms. Maarit had a fun idea for a scarf, which she quickly weaved in the table looms for this number. We also jot up weaving ideas in a little notebook. Strangely, also good ideas are easily forgotten.

The woven and finished pattern is left waiting for the photo shoot. We iron and polish the weaving to make it ready for the photos. The photoshoot might happen on my backyard or we might make a longer trip for the photos. I also photograph a lot of weaving steps on the loom. I think weaving is beautiful! The weaving pattern is given a name so that it stands out from other patterns and is better remembered. The model is ready for the layout. During the weaving process the weaver has written down all the details accurately. I'll write the pattern instruction and we check it out. I finish the layout of the magazine and the instructions are checked again. Our pattern is going out into the world and we wish it a good journey and success. *Marjatta*







DESIGN OF PATTERN **Kirsi Reilin** WEAVER **Kirsi Reilin***Finished size 34,5 x 188 cm + fringes á 9 cm*

## Scarf for a present

### 3735

Give a luxuriously soft silk wool scarf as a present! Individual warp threads form airy groups of stripes in the men's scarf. Kirsi wove the scarf as a present and brought it to the Weaver's Pick editing office. We fell in love with the scarf and wished for a similar pattern for the magazine.

It is easy to change the colour of the scarf just by changing the ground colour. Choose a dark colour for the ground where neutral white and beige stripes will come out. The ground color of the first scarf was dark green. Beige is thicker than the other yarns.

The Warp Silvia silkwool yarn, tex 50x2, 50 g = approx. 500 m  
and Sivilla silkwool yarn, tex 50 x 4,  
50 g = approx. 250 m, Wetterhoff

Warp width 38,2 cm  
number of warp ends 229  
density 6 threads/cm  
length 2,8 m

Reed 60/1  
Weave Twill  
Weft Silvia silkwool, twofold

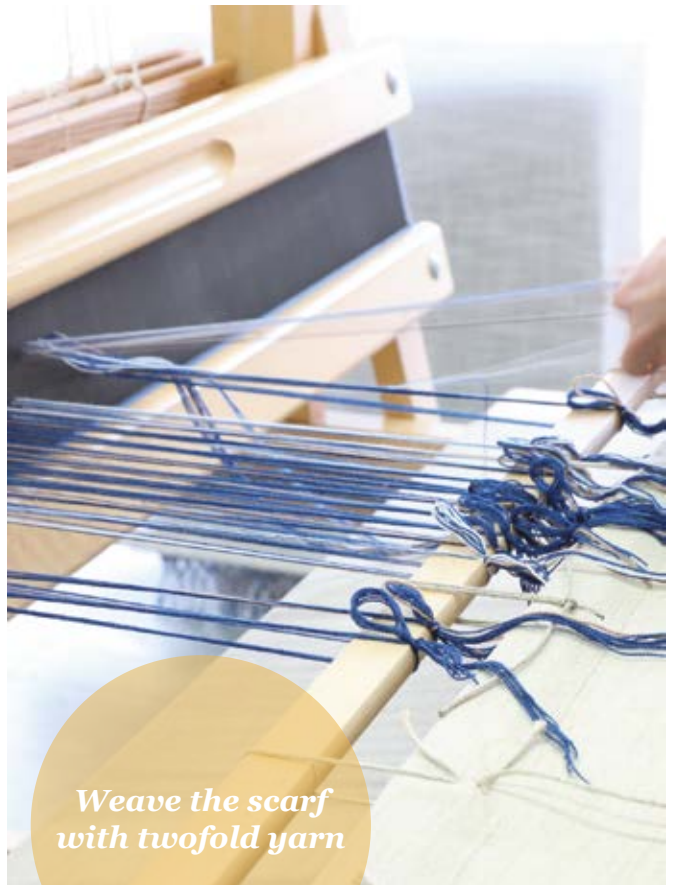
**AMOUNT OF WARP YARN NEEDED**, length 2,6 m

Silvia silkwool yarn, tex 50x2, 50 g = approx. 500 m  
2911 navy blue 48 g  
2935 white 17 g

Sivilla silkwool yarn, tex 50 x 4, 50 g = approx. 250 m  
4905 light brown 16 g ▶







*Weave the scarf  
with twofold yarn*





### INSTRUCTIONS FOR WINDING THE WARP

The thicker Sivilla-yarn is marked in the instructions, otherwise the yarn is thinner Silvia.

- 16 threads navy blue
  - 1 thread light brown Sivilla
  - 5 threads navy blue
  - 1 thread light brown Sivilla
  - 5 threads navy blue
  - 1 thread light brown Sivilla
  - 18 threads white and navy blue alternately
  - 1 thread light brown Sivilla
  - 2 threads navy blue
  - 1 thread light brown Sivilla
  - 2 threads navy blue
  - 1 thread light brown Sivilla
  - 18 threads white and navy blue alternately
  - 1 thread light brown Sivilla
  - 5 threads navy blue
  - 1 thread light brown Sivilla
  - 5 threads navy blue
  - 1 thread light brown Sivilla
  - 17 threads navy blue
  - 1 thread light brown Sivilla
  - 5 threads navy blue
  - 1 thread light brown Sivilla
  - 5 threads navy blue
  - 1 thread light brown Sivilla = the middle
- Wind the other edge of the warp as a mirror image.  
229 threads in total

### AMOUNT OF WEFT YARN NEEDED for one scarf

Silvia silkwool yarn, tex 50x2, 50 g = approx. 500 m, Wetterhoff 2911 navy blue 74 g

### WEAVING INSTRUCTIONS

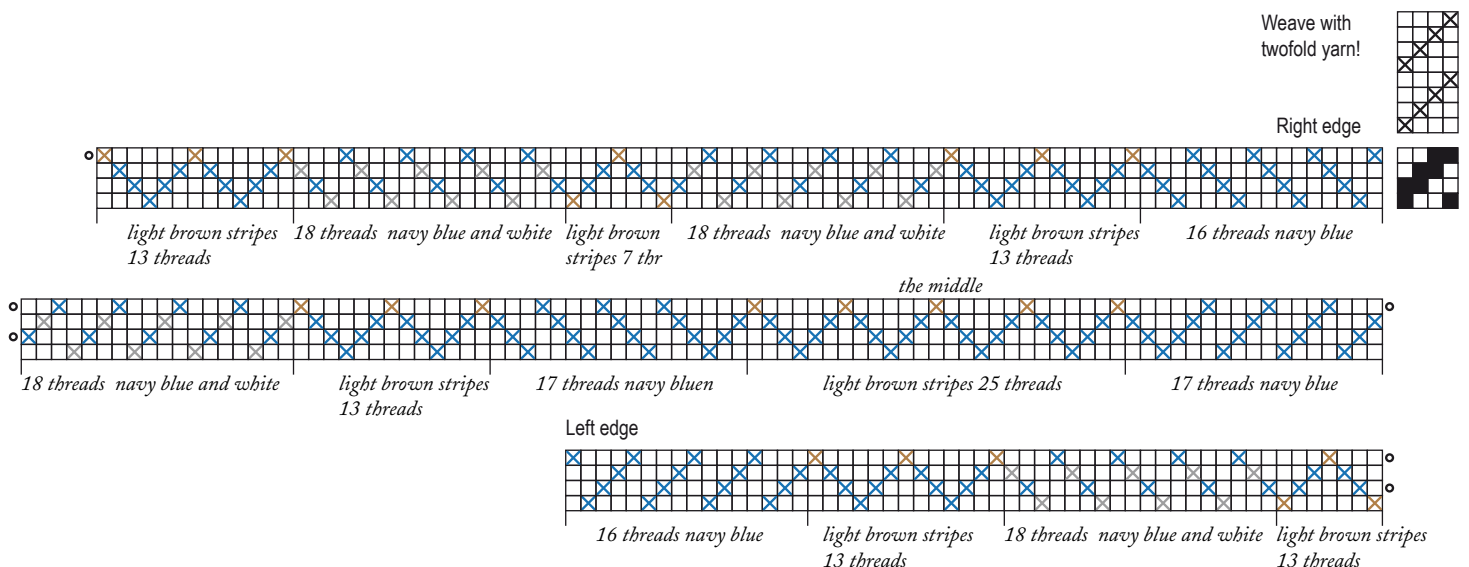
Weave with twofold blue Silvia yarn using straight treadling. Weave with a double shuttle or throw two picks into the same shed going round the outermost warp thread.  
The sett of the weft is 4 double threads/cm = 8 threads/cm.  
The woven length is 163 cm.

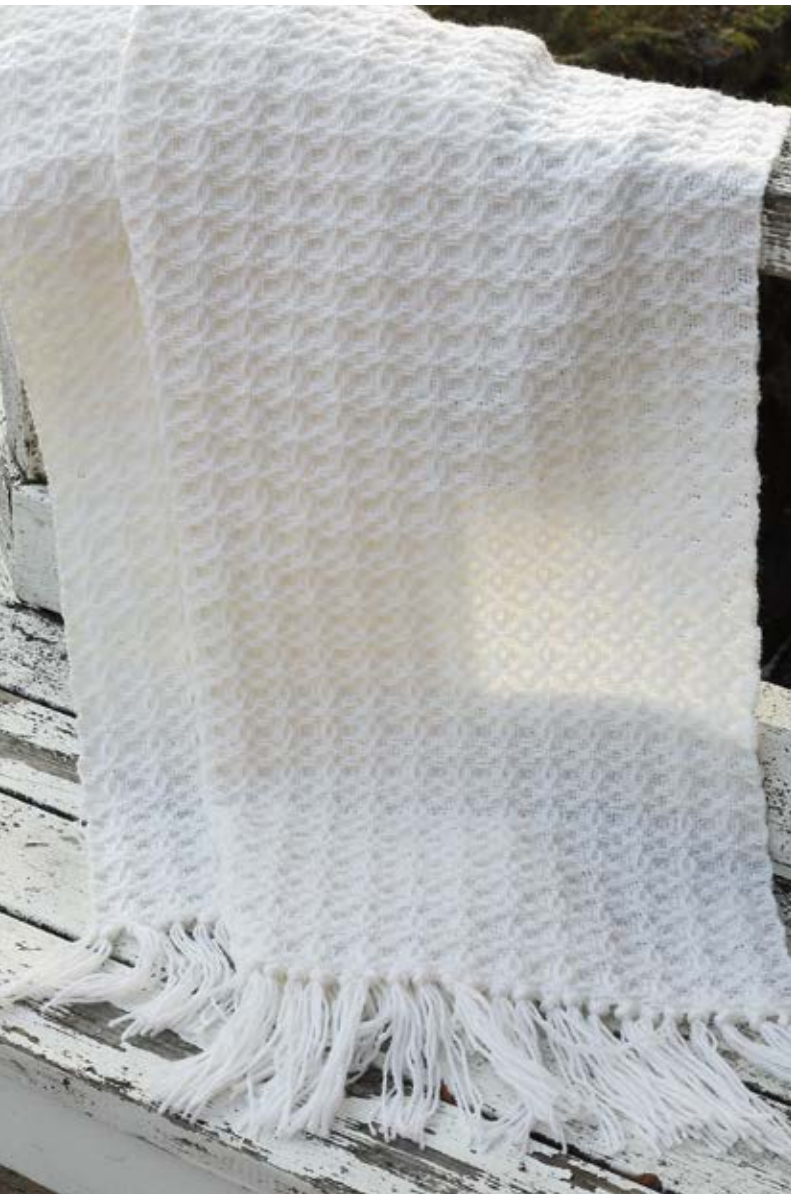
### FINISHING

Make a twisted fringe. Cut the fringe to an even length. ●



The softness, smoothness and the warmth of the silkwool scarf are perfect for the winter.





Wool blanket 93 x 150 cm

## Star moment 3736

Keep the sett of the weft the same as the sett of the warp so the fabric becomes soft and the pattern beautiful. The three-dimensional honeycomb surface of the waffle weave forms when the fabric is removed from the loom.

### WEAVING INSTRUCTIONS

Take the outer threads out of the heddle eye to make floating selvages. Throw the shuttle through the shed over the level thread on the selvedge and bring it out underneath the level thread to bind the edges neatly. Leave approx. 15 cm length for fringe at the beginning and at the end of the fabric.

Pick up two picks of plain weave at the beginning and at the end of the fabric. See page 12 for pick-up instructions. Weave the blanket according to the treadling instructions with white wool yarn. The sett is 4 picks per cm. The woven length is 169 cm.

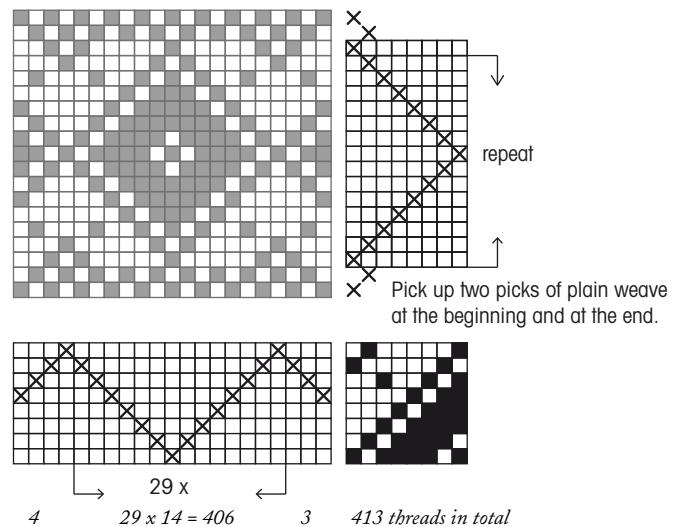
### AMOUNT OF WEFT YARN NEEDED for 1 blanket

Esito Worsted Blanket Yarn, tex 143x3, Nm 7/3,  
1 kg = approx. 2300 m, Lankava  
7001 white 304 g ▶

**The Warp** Esito Worsted Blanket Yarn, White 7001,  
tex 143x3, Nm 7/3, 1 kg = approx. 2300 m,  
Lankava

**Warp** width 103 cm  
number of warp ends 413  
density 4 threads/cm  
length 2,4 m  
amount of warp yarn needed 424 g

**Reed** 40/1  
**Weave** Waffle weave







Weave soft blankets

### FINISHING

Make 7-thread overhand knots, placing them according to the pattern repeat. There are 3 and 4 threads left on the edges. Cut the fringe to an even length.

### WASHING AND CARE

Air out wool to clean it! If necessary, hand wash in lukewarm water at 30°C. Carefully shape the correct dimensions and let dry on a flat surface. ▶



### Tip

Even out the fringe along the edge of the table. Place a weight on the shawl to keep it in place during the cutting!







## *Pick up the plain weave at the ends of the blanket*

The weave often forms short and long floats, making it difficult to tie the fringes. The edge easily ends up looking untidy, no matter how evenly knotted.

It is easier to finish scarves and shawls if you pick up plain weave at the ends.

You will need a weaving sword that is longer than the width of the warp. A suitable width of the weaving sword is 5 to 6 cm. Weave a few centimeters with a scrap yarn at the beginning of the warp.

1. Pick up every other warp thread on the weaving sword.
2. Turn the weaving sword upright and throw the weft into the opened shed.
3. Remove the weaving sword and beat up the weft to the fell of the cloth.
4. Pick up the opposite warp threads on the weaving sword than before. Weave another plain weave pick in the same way as above.

Continue weaving with the proper pattern. Pick up the plain weave picks at the end of the cloth in the same way as in the beginning. ●



1.



2.



3.



4.









DESIGN OF PATTERN **Marjatta Hirvi** WEAVER **Kirsi Vakkari**

Wool blanket 90 x 175 cm

# Corkscrew Stripe

## 3737

We chose to weave intermittent twill with eight shafts to make the fabric as fluffy as possible with a large pattern. Thanks to easy straight treadling, the blanket is completed quickly!

### WEAVING INSTRUCTIONS

Leave approx. 15 cm for the fringe on both ends of the fabric. Pick up two picks of plain weave at the beginning and end of the fabric. See page 12 for pick-up instructions. Plain weave picks make it easier to tie fringes, and the edge becomes neat.

Weave the blanket according to the treadling instructions with light beige wool yarn. The sett of the weft is 4 picks per cm. The woven length is 169 cm.

### AMOUNT OF WEFT YARN NEEDED for 1 blanket

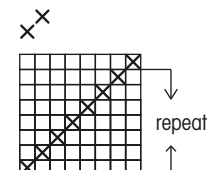
Esito Worsted Blanket Yarn, tex 143x3, Nm 7/3,  
 1 kg = n. 2300 m  
 7076 Light beige 330 g

### FINISHING

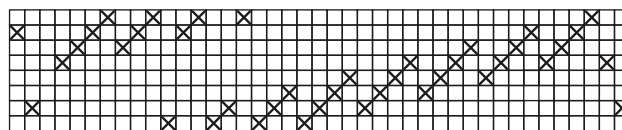
Make 5-thread overhand knots according to the pattern repeat. The outermost fringes come with 6 threads. Cut the fringe to an even length. Air out wool to clean it! If necessary, hand wash in lukewarm water at 30°C. Carefully shape the correct dimensions and let dry on a flat surface. ●

**The Warp** Esito Worsted Blanket Yarn, Grey-brown 7072, tex 143x3, Nm 7/3,  
 1 kg = approx. 2300 m, Lankava  
**Warp** width 98 cm  
 number of warp ends 392  
 density 4 threads/cm  
 length 2,74 m  
 amount of warp yarn needed 457 g

**Reed** 40/1  
**Weave** Twill, intermittent threading



✕ Pick up two picks of plain weave at the beginning and at the end.



6

12 x  
 12 x 32 = 384

2

392 threads in total





Weave soft blankets

## Testing a thin weft

We tried a thin weft at the end of the warp. Compared to the warp thread, the alpaca wool yarn was half thinner but very well suited as a weft. The fabric felt comfortable, and the pattern came out delicate and beautiful.



Warp the loom with dark wool warp for a change! Black is always a safe choice. Other convenient colors are dark brown and dark blue, which is currently trending in home decor. The diagonal stripe pattern comes out beautifully when you weave with light or slightly lighter weft than the warp.









DESIGN OF PATTERN Maarit Windt, Marjatta Hirvi WEAVER Maarit Windt

*Technical experiment*

## *Slightly different stripe warp*

### WARM GRAY AND SEPARATE STRIPES

The idea was to weave an old-time scarf that could have been wrapped around the head and shoulders when going on a church trip or a visit. Besides, we wanted to try a technique where separately wound colour stripes are positioned in their correct places when the yarns are being pre-sleyed into the raddle.

We were looking for yarns for the scarf that would have the look and feel of handspun yarns. We left out the well-known weaving yarns and looked online for suitable yarns from the wide selection of craft yarns. We ended up with a knitting yarn, in which the single strands were visible, and you could see some loose fibers on the rough surface of the yarn. There were enough different shades of grey available in the yarn to fit our idea of colour composition. Besides, the yarn was organic and had been used for weaving as well. The yarn was very well suited to our design.

The scarf fabric is loose, and therefore comfortably light. The rough yarn stayed well in place in the fabric during the weaving process and finishing. Woven wool fabric softens and becomes denser in the wash, so wash the new scarf gently after weaving by hand. The surface of the fabric is soft and smooth after washing and steaming.

Why winding the stripes separately? Maarit had previously beamed warps, which consisted of separately wound warps for stripes and ground colour. The colour stripes are set in their correct places when the warp threads are spread in the raddle. This way, you still have a chance to change and modify the stripe composition. Besides, you can use up efficiently all the leftover yarns by using this technique. For this pattern, we wound separate warps for stripes and made a series of pictures of the process.

Try this technique and apply it to your projects! ▶







Finished size 135 x 135 cm + fringes

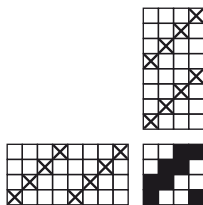
# Old Fashion Scarf

## 3738

**The Warp Bio Shetland, 100% Organic Wool, GOTS**  
 50 g = approx. 280 m, BC Garn

**Warp**  
 width 140 cm  
 density 4 lankaa/cm  
 number of warp ends 560  
 length 2,8 m (1 scarf + a sample 20 cm)  
 weight 282 g

**Reed** 40/1  
**Weave** Twill



### SEPARATELY WOUND WARP STRIPES

A large square-shaped scarf has a similar stripe composition along the warp and weft. We planned roughly the stripe design before warping, but the stripes were placed to the correct slots when spreading in the raddle. When we sleyed the raddle, we made the final decision on how far from the edges the white stripes would be, how many ground coloured yarns are between the stripes, and where the black yarns are going to be placed. We wound individual warps for the ground colours and the stripe colours. The warp had symmetrical stripe design, so we wound two equal warps from each stripe colour to make handling easier. The grey ground colour in the middle was wound as a whole.

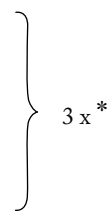
### INSTRUCTIONS FOR WINDING THE WARP

Warps of different colours are wound next to each other one after another, but the cross and end were tied individually to each warp. In this way, they can be handled as separate warps afterwards. We removed the warp from the warping mill by chaining all of the warps as one unit. See page 18 for more winding instructions.

Warps 11 pcs: Black 12 threads, black 12 threads, unbleached white 12 threads, unbleached white 12 threads, beige 12 threads, beige 12 threads, light grey 12 threads, light grey 12 threads, dark grey 116 threads, dark grey 116 threads, grey 232 threads. A total of 560 threads.

### INSTRUCTIONS FOR WINDING THE WARP IN THE CONVENTIONAL WAY

- 40 threads slate gray
  - 4 threads ecru / chalk / silver gray
  - 4 threads slate gray
  - 4 threads ecru / chalk / silver gray
  - 4 threads slate gray
  - 4 threads ecru / chalk / silver gray
  - 12 threads slate gray
  - 16 threads slate gray
  - 20 threads flanel gray
  - 4 threads black
  - 4 threads flanel gray
  - 4 threads black
  - 4 threads flanel gray
  - 4 threads black
  - 176 threads flanel gray = the middle
- Wind the other edge of the warp as a mirror image.  
 560 threads in total



- \* 1. time ecru
  - 2. time chalk
  - 3. time silver gray
- = the first of the groups of three stripes is ecru, the second is chalk white and the third is silver grey.

### AMOUNT OF WARP YARN NEEDED, length 2,8 m

- Bio Shetland, 100% Organic Wool GOTS, 50 g = approx. 280 m, BC Garn
- SH43 slate gray 117 g
- SH42 flanel gray 117 g
- SH45 graphite 12 g
- SH41 silver gray 12 g
- SH40 chalk 12 g
- SH39 ecru 12 g      282 g in total ▶









1.



2.

## *Separately wound warp stripes*

1. Design the stripe composition and decide on the length, width and the number of threads in the stripes. The stripe design doesn't have to be nailed down before winding the warp, because the exact spots of the stripes won't be determined until the raddle is sleyed.
2. Wind different colours in an ordinary way, but tie the cross and the end of the warp for each colour individually. In this way, they can be treated as separate warps.

The warp is beamed through the lease sticks, in which case the cross and the end of the warp needs to be tied only in the other end of the warp. Start chaining the warp from the end without ties. All the warps can be chained as one whole warp at the same time.



3.



4.

3. Insert the wide ground coloured warps to the back apron rod and narrow stripe warps to another rod. Insert the stripe warps approximately in the same order as your stripe design indicates, or make your composition at this point.

4. and 5. Spread the warp in the raddle in the desired colour order. Follow the cross when sleying. Don't mind crisscrossing threads at this point.

6. Follow the order in the raddle and insert the ends of warps to a common back apron rod. Tie the warp beam cords around the rod or pick both the cords and the ends of warp around a new rod.

7. Insert the first lease stick in its correct place by following the order of the threads in the raddle. Be careful, as the warp should be threaded in the order that the lease sticks indicate.

8. Insert another lease stick to its place. Cut out all ties holding the crosses. ▶



5.



6.



7.



8.



9. Beam the warp through the lease sticks. When the beaming is completed, raise the lease sticks to the other side of the raddle. Lay the threads to the slots of the raddle. They don't have to be in the exact order of the cross. Raise the warp by tying the raddle to the castle. Alternatively, you can raise the warp with a rod. Continue dressing the loom as usual.



## WEAVING INSTRUCTIONS

Leave approx. 13 cm length for the fringe. Weave the scarf using the same stripe composition as the warp has. When you change the colour or the weft, thin the ends of the yarns. The sett is 4 picks per cm. The scarf will become square-shaped when there are the same number of picks and ends per cm. The woven length is 157 cm, measured under tension on the loom.

### AMOUNT OF WEFT YARN NEEDED for 1 scarf

Bio Shetland, 100% Organic Wool GOTS,

50 g = approx. 280 m, BC Garn

SH43 slate gray 70 g

SH42 flanel gray 70 g

SH45 graphite 7 g

SH41 silver gray 7 g

SH40 chalk 7 g

SH39 ecru 7 g

168 g in total

## FINISHING

Tie the fringe with overhand knots. Cut the fringe to an even length. Wash by hand in lukewarm water with wool detergent. Let it dry on a flat surface. Steam the scarf and the fringe as well! Cut the fringe to an even length once more, to make it extra neat. ●









DESIGN OF PATTERN **Marjatta Hirvi** WEAVER **Kirsi Vakkari***Finished size 26,5 x 136 cm*

## *Twinkle rib weave runner 3739*

<b>The Warp</b>	Garnhuset Eko Mercerised Cotton 8/2, tex 76x2, 1 kg = n. 6800 m, Garnhuset i Kinna.
<b>Warp</b>	width 27 cm density 20 threads/cm number of warp ends 540 length 10 m
<b>Reed</b>	50/4
<b>Weave</b>	Warp-faced rep

### INSTRUCTIONS FOR WINDING THE WARP

Wind 4 yarns in the same time:

- 4 x 2 threads blum 848 + 2 threads burgundy 850 (16)
  - 4 x 2 threads blum + 1 thread burgundy + 1 thread red 843 (16)
  - 4 x 2 threads blum + 2 threads red (16)
  - 4 x 2 threads blum + 1 thread red + 1 thread bright red 840 (16)
  - 5 x 2 threads blum + 2 threads bright red (20)
  - 12 threads burgundy (12)
  - 5 x 2 threads blum + 2 threads bright red (20)
  - 4 x 2 threads blum + 1 thread red + 1 thread bright red (16)
  - 4 x 2 threads blum + 2 threads red (16)
  - 4 x 2 threads blum + 1 thread burgundy + 1 thread red (16)
  - 4 x 2 threads blum + 2 threads burgundy (16)
- Repeat altogether 3 x from the beginning.  
540 threads in total

### AMOUNT OF WARP YARN NEEDED, length 10 m

Eko Mercerised Cotton 8/2, tex 76x2

1 kg = n. 6800 m, Garnhuset i Kinna

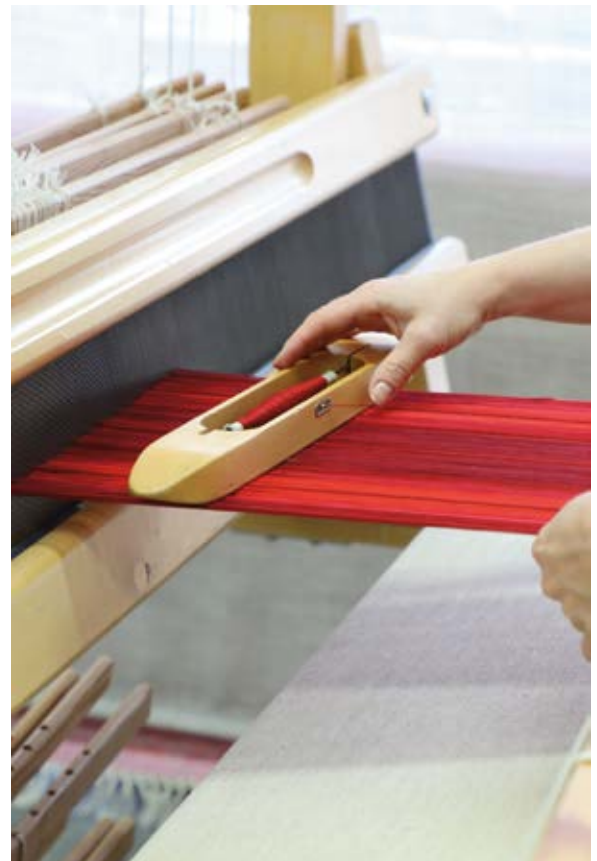
848 plum purple 385 g

850 burgundy red 165 g

843 red 145 g

840 bright red 135 g

830 g in total ▶







## **Stripe runner**

*Finished size 26,5 x 54 cm*

### WEAVING INSTRUCTIONS

Weave 3 cm for the hem with wine red 8/2 mercerized cotton. Weave the runner according to the treadling instructions using double strand of red mop yarn. The woven length is 54 cm + the hems 3 cm each.

### AMOUNT OF WEFT YARN NEEDED for 1 table runner

Minimop Cotton Twine (loosely twisted mop yarn)

1 kg = approx. 700 m, Ø 2,5 mm, Lankava

64 red 99 g

For the hems: Eko Mercerised Cotton 8/2 burgundy red 2 g

## **Little Squares**

*Finished size 26,5 x 49 cm*

### WEAVING INSTRUCTIONS

Weave 3 cm for the hem with wine red 8/2 mercerized cotton. Weave the runner according to the treadling instructions using red mop yarn as a thick pick and wine red 8/2 mercerized cotton as a thin pick. The woven length is 54 cm + the hems 3 cm each.

### AMOUNT OF WEFT YARN NEEDED for 1 table runner

Minimop Cotton Twine, Lankava

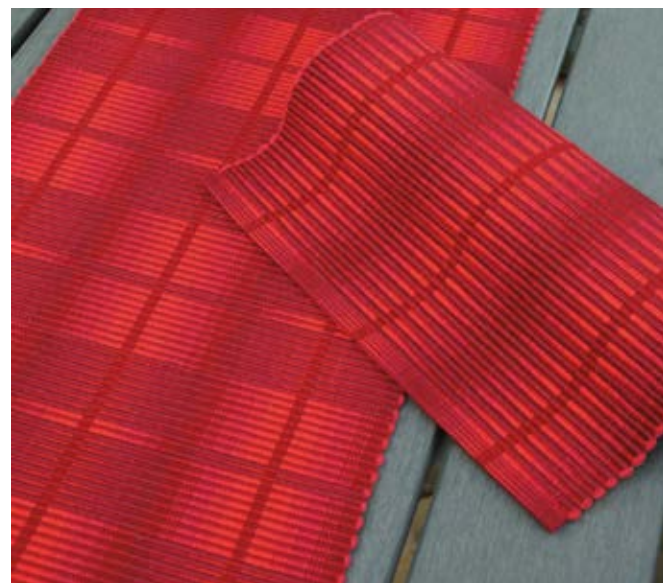
64 red 45 g

Eko Mercerised Cotton 8/2, Garnhuset i Kinna

850 burgundy red 5 g

### FINISHING

Finish the runner by sewing 3-step zigzag stitches on the ends. Then you can cut the pieces apart. Steam the runners. Stitch the hems by hand or machine. The height of a finished hem is 1 cm. Wash the runners by hand in 40-60°C water when you are washing them for the first time. Don't twist. Afterwards, you can wash them in a washing machine. Steam or press the runners after washing. ●



**3739**

## **Twinkle rib weave runner**

*Finished size 26,5 x 136 cm*

### WEAVING INSTRUCTIONS

Weave 3 cm for the hem with wine red 8/2 mercerized cotton. Weave the runner according to the treadling instructions using red mop yarn as a thick pick and wine red 8/2 mercerized cotton as a thin pick. The woven length is 149,5 cm + the hems 3 cm each.

### AMOUNT OF WEFT YARN NEEDED for 1 table runner

Minimop Cotton Twine (loosely twisted mop yarn)

80 % Recycled cotton, 20 % Polyester

1 kg = approx. 700 m, Ø 2,5 mm, Lankava

64 red 126 g

Eko Mercerised Cotton 8/2, tex 76x2

1 kg = approx. 6800 m, Garnhuset i Kinna.

850 burgundy red 14 g

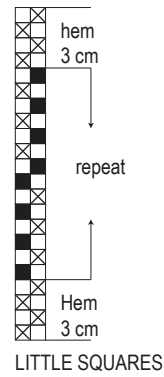




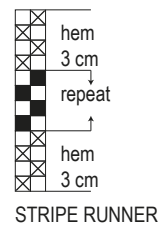
## Remember!

Weigh the yarns before and after winding the warp each colour separately. Write down the amount of each yarn needed for the warp. In addition, write down the length of the warp, the number of warp ends and the warp colour order.

Attach the labels back to the spools, even if you were in a hurry to beam the warp! It is a lot harder to use and identify the yarns afterwards if the colour and batch numbers are missing.

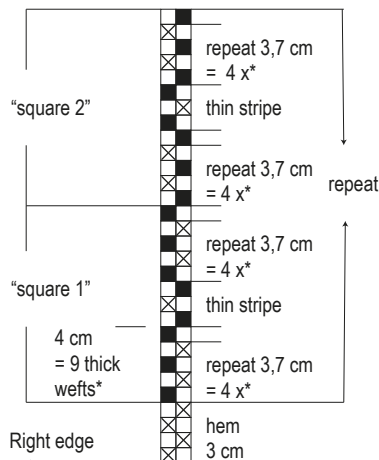


LITTLE SQUARES



STRIPERUNNER

Weave "square 1" and the hem at the end.



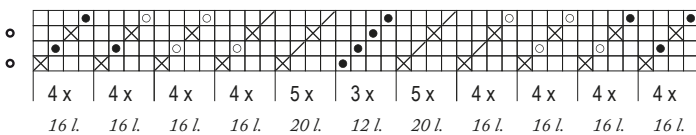
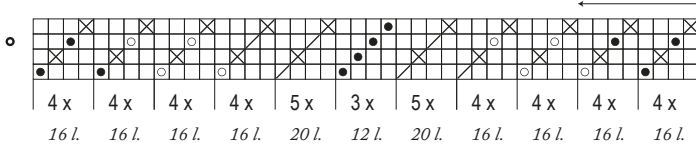
Threading:

- × = blum purple 848
- = burgundy red 850
- = red 843
- / = bright red 840

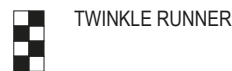
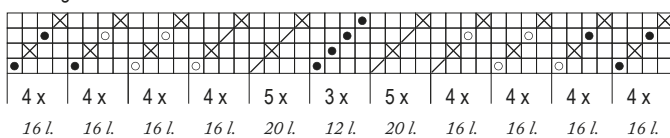
Treadling

- × = thin weft
- = thick weft

\* The number of thick wefts depends of the thickness of the yarn



Left edge



TWINKLE RUNNER







DESIGN OF PATTERN Marjatta Hirvi WEAVER Kirsi Reilin

White-grey woollen rug 135 x 178 cm  
Brown woollen rug 135 x 181 cm

## Compass 3740 - Summer and Winter rugs

The pattern of the large wool rugs is designed to be as decorative as possible. A single large starlike motif fills the entire rug. The rug can be woven square-shaped when the pattern is completely symmetrical. The rug can also be lengthened by adding shorter parts of the pattern to the beginning and end of the rug.

The summer and winter weave is versatile because you can shorten or stretch the pattern as you wish. There are many pattern design possibilities. ▶

**The Warp** Liina Cotton Twine 15-ply, tex 30x15,  
1 kg = approx. 2020 m, Suomen Lanka

**Warp** width 148 cm  
density 3 threads/cm  
number of warp ends 445 + 4  
length 5,8 m (2 mattoa)

**Reed** 30/1  
**Weave** Summer and winter weave

**Weft** Pirkka Hair yarn Nm 1.5/3, tex 665x3,  
1 kg = approx. 480 m, 80 % wool 20 % hair,  
Taito Pirkanmaa Oy

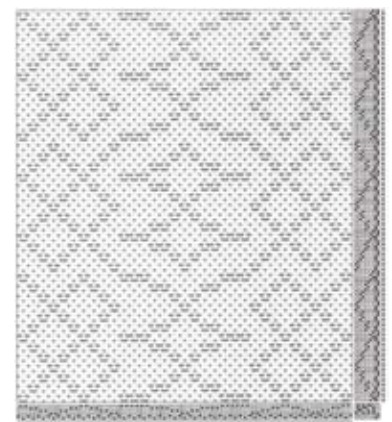
The two outer warp threads are doubled on both sides. Two different coloured wefts are alternating in treadling. The colours are opposite on the other side of the rug. Weave by stepping on two treadles at the same time.



The white-grey rug has a darker and a lighter side, but the brown rug has equal portions of colours on both sides. The rugs have been woven in the same warp! The threading is the same, but the tie-up has been changed. In the tie-up of the white-grey rug, each block has its own treadles for grey and white wefts. In the brown rug, the harnesses are tied in the opposite way to each other. The same block can then be woven either brown or light with opposite treadles by changing the colour order of the wefts.

### Tip

The pattern can be modified by changing the treadling. In the draft on the right, the large central pattern has been replaced with smaller patterns.









## Compass White-Gray Rug

*Finished size 135 x 178 cm*

Leave a suitable length for the fringe for tying the warp ends. Weave approximately 1,5 cm with the 15-ply cotton twine alone for the hem allowance that will be folded inside of the hem. After that, start to use the grey and white hair yarn as wefts. Weave the hem according to the treadling instructions. The folded length of the hem is the same as one pattern block. Weave the rug according to the treadling instructions.

The length of a block is 4,2 cm = 24 picks

The sett is 5,7 picks per cm.

The woven length is 200 cm including the hems + the inner hem allowance with the cotton twine weft 2 x 1,5 cm.

**AMOUNT OF WEFT YARN NEEDED** for 1 rug

Pirkka Hair yarn Nm 1.5/3, tex 665x3, 1 kg = approx. 480 m,  
80 % wool 20 % hair, Taito Pirkanmaa Oy

7002 white 1,6 kg

7217 gray (granite) 1,6 kg

3,2 kg in total

The thickness and bubbling of weft affect the amount of weft needed.

### FINISHING

Tie the ends with tight square knots. Trim the fringe to 3-4 cm.

Stitch the hem with 6-ply cotton twine or similar strong yarn.

See page 29 for more hem sewing instructions.



### WEAVE BY STEPPING ON TWO TREADLES AT THE SAME TIME.

There's a slash indicating the tie-down treadles in the draft. There are two treadles marked on each row in the treadling draft. Press these pattern treadle and the tie-down treadle at the same time.  
/ = tie-down treadle in draft.









## Compass Brown Rug

Finished size 135 x 181 cm

Leave a suitable length for the fringe for tying the warp ends. Weave approx. 1,5 cm with the 15-ply cotton twine alone for the hem allowance that will be folded inside of the hem. After that, start to use the brown and grey-purple hair yarn as wefts. Weave the hem according to the treadling instructions. The folded length of the hem is the same as one pattern block. Weave the rug according to the treadling instructions. The length of a block is 4,2 cm = 24 picks. The woven length is 201 cm including the hems + the inner hem allowance with the cotton twine weft 2 x 1,5 cm. The thickness and bubbling of weft affect the amount of weft needed.

### AMOUNT OF WEFT YARN NEEDED for 1 rug

Pirkka Hair yarn Nm 1.5/3, tex 665x3, 1 kg = approx. 480 m,  
80 % wool 20 % hair, Taito Pirkanmaa Oy  
7210 brown (brick brown) 1,8 kg  
7208 grey-lilac (date fruit) 1,8 kg 3,6 kg in total  
The thickness and bubbling of weft affect the amount of weft needed. ●



Summer and Winter rugs will have beautiful selvages if you twist the wefts in the edge around each other.

Note that in the other edge the shuttle goes around the passive weft under it, and in the other edge over it.

## How to weave hems to a rug

Leave a suitable length of warp to the ends of the rug. You must be able to tie square knots with the ends. Approx. 10 cm is a good length.

1. Weave a couple of centimetres with scrap yarn to support the rug at the beginning and end of the rug. Also, the scrap yarn makes it easier to adjust the beginning of the rug to the correct width.

Weave 1,5 cm for the inner hem allowance with warp yarn. Bubble the weft enough, to prevent draw-in.

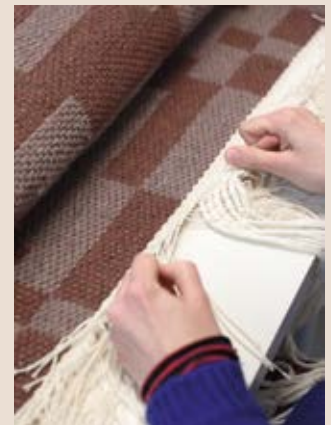
2. Tie the ends with tight square knots. Remove the scrap yarn at the same time.

3. Trim the fringes to approx. 3-4 cm in length.

4. Use a blunt needle and always pick the whole warp threads, don't split threads with the needle. Sew the hem with a strong yarn, for example, a 6-ply cotton twine. Double fold the hem so that only the part woven with the cotton twine will hide inside of the hem. Alternate the stitch to the hem and the cloth. Make the stitches close to each other, don't jump. When you pull the yarn tight, it draws the cloth and the hem together. Remember to sew the ends of the hems as well.



1.



2.

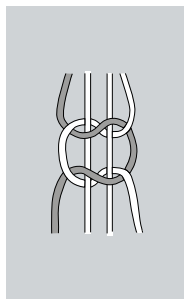


3.



4.





A macrame square knot



DESIGN OF PATTERN Kirsi Vakkari, Marjatta Hirvi WEAVER Kirsi Vakkari

Finished size 108 x 213 cm

## Fortune Stripe - Rag Rug 3741

The Warp	Liina Cotton Twine 15-ply, tex 30x15, 1 kg = approx. 2020 m, Suomen Lanka
Warp	width 118 cm density 3 threads/cm number of warp ends 360 length 5,3 m (2 rugs) amount of warp yarn needed 980 g
Reed	20/1, 1, 2, 2 Selvages: 20/3, 3, 2
Weave	Plain weave (The warp consists of single and double threads)

**AMOUNT OF WEFT YARN NEEDED** for 1 rug  
Dark solid coloured and multicoloured rag wefts 2,24 kg.  
The width of the wefts 1,5 – 2 cm.

### WEAVING INSTRUCTIONS

Cut the wefts to 1,5 – 2 cm width depending on the thickness of the fabric. Cut the wefts into 1,5 m – 3,5 m long fabric strips and mix their order. Taper the ends of wefts and bundle with a knot that is easy to untie. Fill your shuttle with the weft and weave with a single shuttle. Unlike usually when weaving multi-coloured fabric, the weft strips are not ended and started on the selvedge. When a knot comes to the shed, untie the knot and overlap the ends of the wefts. The overlapping joints appear randomly in different spots in the fabric.

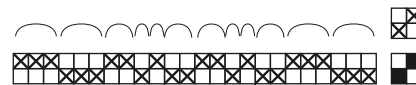
-The majority of the wefts are dark coloured. There are some light grey coloured wefts here and there. Make sure that the light coloured wefts are placed in a balanced way to the whole width and length of the rug.

-The sett is 3,5 – 4 wefts/cm. The woven length is 2,21 m.

### FINISHING

Tie the ends with square knots 2 + 2. Make two macrame square knots approx. 1,5 cm from the edge, and another row approx. 1,5 cm from the last knots. The second row knots are placed between the first knots by combining two threads from the right side and two threads from the left side. ●

⤿ = Slay in the same dent in the reed.



10    57 x 6 = 342    8    = 360  
threads in total

### Reed 20/10

Sley two threads on the same shaft in the same dent and single threads each in their own dents. Sley three threads in the same dent on both edges.





*Sturdy plain  
weave rag rug*





*Sturdy plain  
weave rag rug*



DESIGN OF PATTERN Kirsi Vakkari WEAVER Kirsi Vakkari

Finished size 109 x 186 cm

# Ombre stripe - Rag Rug 3742

<b>The Warp</b>	Liina Cotton Twine 15-ply, tex 30x15, 1 kg = approx. 2020 m, Suomen Lanka
<b>Warp</b>	width 117 cm density 3 threads/cm number of warp ends 352 + 8 (double threads for selvages) length 5,3 m (2 rugs) amount of warp yarn needed 980 g
<b>Reed</b>	30/1 Selvages: 30/2, 2, 2, 2 (= the 4 outmost ends are double)
<b>Weave</b>	Plain weave (The warp consists of single and double threads)

## AMOUNT OF WEFT YARN NEEDED for 1 rug

Tricot wefts 1044 g

Rag wefts 1530 g, approx. 2 cm width

For the borders rag wefts 177 g, approx. 1 cm width\*

## WEAVING INSTRUCTIONS

Weave approx. 1 cm with the 15-ply black cotton twine alone at the beginning for the inside allowance. Weave 8 cm for the border by alternating 2 picks with a dark purple weft\* and 1 pick with dark grey rag weft\* using 3 shuttles.

8 cm dark purple rag weft + dark multicoloured rag weft + dark purple tricot weft

12 cm red-purple rag weft + dark multicoloured rag weft + dark purple tricot weft

10 cm red-purple rag weft + purple rag weft + dark purple tricot weft

5 cm red-purple rag weft + purple rag weft + rose tricot weft

5 cm purple rag weft + multicoloured purple rag weft (a)+ rose tricot weft

10 cm purple rag weft + multicoloured purple rag weft (b) + rose tricot weft

10 cm purple rag weft + pink rag weft + rose tricot weft

10 cm purple rag weft + pink rag weft + grey-beige tricot weft

5 cm multicoloured grey-purple rag weft + pink rag weft + grey-beige tricot weft

10 cm multicoloured light blue rag weft + pink rag weft + grey-beige tricot weft

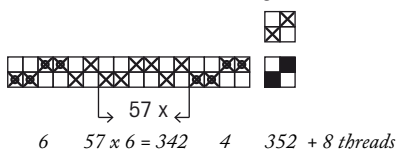
10 cm multicoloured light blue rag weft + pink rag weft + unbleached white tricot = *the middle*

Weave the other half of the rug symmetrical to the first half. The woven length is 180 cm + border á 8 cm.

## FINISHING

Tie the warp threads with square knots. Cut the fringe to 4-5 cm length. Stitch the hem with black 6-ply cotton twine. Double fold the hem so that only the part woven with the cotton twine will hide inside of the hem. The height of a finished hem is 4 cm. ●

✕ = Double threads at the edges.



## Reed 30/10

Sley one thread in each dent and four times two threads in the same dent on each edge.



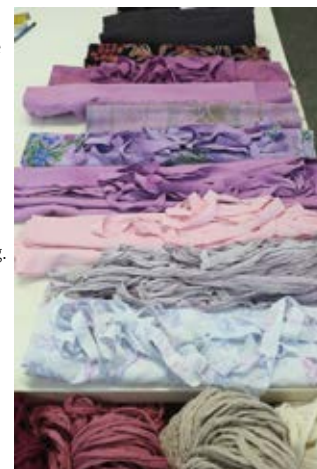
## Wefts for the rug:

**Rag weft**, width 2 cm: dark purple 52 g, dark multicoloured 126 g, red-purple 166 g, purple 509 g (twice in the picture), multicoloured purple (a). 36 g, multicoloured purple (b) 70 g, pink 278 g, multicoloured grey-purple 53 g and multicoloured light blue 134 g.

**Tricot weft:** dark purple 356 g, rose 363 g, beige 325 g and unbleached white 107 g.

**Rag weft for the borders**, width 1 cm, dark grey (not in the picture) 71 g ja dark purple 106 g.

**Inside allowance** 15-ply black cotton twine 18 g.







*The pattern is suitable for fine to medium weight yarns.*

*Finished size 46 x 185 cm + fringes*

## *Stash Warp Scarf*

### *3743*

We went through our yarn stash! The idea was to weave a scarf with mixed yarns of different fibers and weights in the warp. Maarit had previously emptied out great yarn stashes by winding warps with this technique. We carried out the same procedure on a smaller scale with a table loom.

#### INSTRUCTIONS FOR WARP DESIGN

The warp was designed quickly by picking up the suitable yarns from the stash containers. After that, we wound the warp combining different yarns in the same portee. The sett was approx. 8 single or double ends per cm. The threads were sleyed in a 40 dent reed. A portee is made by combining different yarns in a way that two fine yarns represent one single yarn. The portees should be as thick as four medium weight yarns. In this way, one portee might have for example 4 fine yarns and 2 medium yarns. The width of the warp is determined by the portees, not by warp ends like usually. Two portees = 1 cm. There are two portees pre-sleyed in each dent of the raddle. The yarns are pretty fine weight!

One portee is divided randomly and threaded in two heddles. The reed is sleyed by sleying each heddle's threads in the same dent. The warp is dense, and it will be woven with a fine weight yarn with plain weave, so the warp threads will be clearly visible. The scarf becomes beautifully variegated with a lively surface.

If you use thicker yarns for the warp, use 30 dent reed instead. In this case, the sett would be 6 ends per cm. Wind four single or double yarns in a portee, when 3 portees = 12 ends = 2 cm. Pre-sley the raddle with one or two portees per dent alternating. Carry out the threading and sleying according to the instructions. You can also wind three single or double yarns in a portee, when 2 portees = 1 cm. Before you wind your warp try out if the chosen warp yarns fit through the dents of the reed.











Wind 4 single or double yarns at the same time (5 - 6 single yarns) = 1 portee.

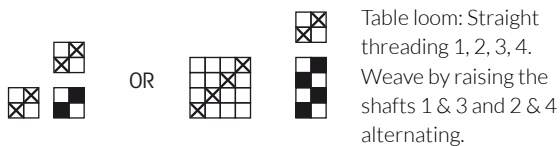


Pre-sley two portees in each dent. Two portees = 1 cm.

Finished size 46 x 185 cm + fringes

## Stash Warp Scarf 3743

<b>The Warp</b>	Mixed yarns of different fibers and weights.
<b>Warp</b>	width 48 cm length 2,8 m density 8 threads/cm (single and double) number of warp ends: 96 portees (2 portee = 1 cm. Each portee has 4 single or double ends) amount of warp yarns needed 260 g
<b>Reed</b>	number 40/10 (40 dents per 10 cm)
<b>Weave</b>	Plain weave
<b>Weft</b>	One of the fine weight yarns that was also used in the warp



### INSTRUCTIONS FOR WINDING THE WARP

Dark purple and light purple Esito worsted wool yarn and light beige Rowan fine lace yarn were included in every portee of the warp. Other yarns were changed. Each portee has 4 single or double yarns (=5-6 single yarns). The thickest yarn, 7-veljestä sock yarn was used very little here and there as an effect yarn. All of the warp yarns have been listed on the next page. The yarn needed for the warp was 260 g.

-Make sure to divide different weighted yarns evenly to the width of the warp when winding. This way, the warp will stay even when you're weaving it.

-Pre-sley two portees in each dent. Two portees = 1 cm

-The ends of each portee will be threaded in random order in two heddles. Each heddle has 2-3 threads.

-Sley threads in each heddle to the same dent of the reed

### WEAVING INSTRUCTIONS

Weave a couple of picks with scrap yarn at the beginning and end of the scarf. Weave the scarf with some of the fine yarns used in the warp. We wove the scarf with light purple Esito worsted yarn as far as we could, until we run out of it. The rest of the scarf was woven with dark purple Esito worsted yarn. The yarns used for the weft were the same that were included in the warp all the way. The woven length is 194 cm. The yarn needed for the weft was 91 g.

### FINISHING

Hemstitch the ends of the scarf with the weft yarn. Use a blunt needle. Remove the scrap yarn from the end of the scarf while stitching. Place the scarf on the table fringe, pointing away from you. Stitch from left to right. 1. Poke the needle down through the cloth two wefts from the edge. Come up diagonally two warp threads to the right and two wefts up in the edge. 2. Poke the needle down two warp threads to the left in the edge. Come up two warp threads to the right in the edge. Tighten the stitch. Repeat steps 1 and 2. Cut the fringe to an even length. Steam the scarf. Wash by hand according to the washing instructions of yarns used. ●





Warp yarns:

Dark purple and purple: Kamena, 100 g = n. 455 m (100 % wool, hanks in the back).

Ligth beige: Rowan fine lace, 50 = 400 m (80 % baby alpakka, 20 % merino wool, skein).

Multicoloured pink and multicoloured rosa: Manos del Uruguay, 50 g = 400 m (70 % baby alpakka, 25 % silk 5 % cashmir).

Dark purple and purple: Esito combwool, 100 g = n. 425 m (100 % wool, cones).

Ligth pink and old rose red: Kamena, 100 g = n. 455 m (100 % wool, hanks in the front).

Multicoloured purple: 7-veljestä, 100 g = n. 200 m (80 % wool, 25 % polyamid, not in the picture).

The fringe of the scarf has been finished by stitching. The fringe of the dense warp stays straight and follows the line of the warp stripes beautifully.



Stitch from left to right.

1. Stitch diagonally under two warp threads to the right and two wefts up in the edge. (Remember that some of the warp ends consist of two fine threads)



2. Stitch under the same two warp threads from left to right in the edge. Tighten the stitch. Repeat steps 1 and 2.





**The subscription of The Weaver's Pick also includes the Digital magazine!**

Instructions: After ordering The Weaver's Pick magazine on the website, you will receive an email with a Username and Password.

Click the link in the email which takes you directly to sign into your account. After logging in, you can go to the menu and click "MAGAZINE". The digi magazine articles and online magazine are now open for reading.

In the future, you can read the digital magazine by logging in My Account with your Username and Password. After that, the digital magazine can be read on the page "MAGAZINE".

On the My Account page, you can change your password and see the details of your subscription.

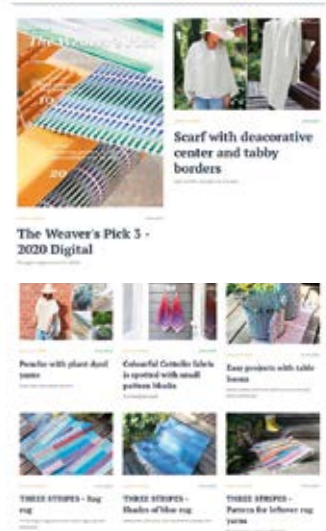
**THE DIGITAL SUBSCRIPTION**



**DIGITAL MAGAZINE**

The magazine numbers for your digital subscription appear on the page "MAGAZINE" under "Your own subscription archive". By clicking on the issue of the magazine, you can open the specific digital magazine.

Digital magazine includes the ONLINE MAGAZINE. The magazine can be opened from the button on each weaving pattern and from the cover image. In addition, each pattern can be opened in printable PDF format.



**WEAVING PATTERNS**

In the digital magazine, you can view the pattern quickly and conveniently on screens of all sizes. The digital pattern includes the same information as the printed magazine, also the drafts.



From the button "DOWNLOAD THE PATTERN" you can download the pattern in a printable PDF format. From "OPEN THE MAGAZINE" you can open the online magazine.

**ONLINE MAGAZINE**



**WEAVING PATTERN in a printable format**



**Weaver's Library**

**KANKAANRAKENTAJAN OPAS**

This guide (in Finnish) for dressing a loom is a popular textbook on the practical work involved in weaving. The guide includes clear instructions for winding the warp, beaming and tying up the treadles, and tips for actual weaving. 52 pages. A basic guide to keep by your loom. Price €15.80



**KANKAANRAKENTAJAN SIDOSOPPI**

This guidebook (in Finnish) on the theory of fabric structure includes the basics of fabric structure and the most common weave types for floor looms. 68 pages. Price €18.90







In the next  
issue..

Weave small hand towels in fresh spring colours. Each towel is woven with a different treadling!

## The spring issue 1/2021 is out in February

[www.theweaverspick.com](http://www.theweaverspick.com)  
[www.mallikerta.fi](http://www.mallikerta.fi)

On our website, you can order single issues or subscribe to the full volume of the Weaver's Pick magazine, or order back issues from previous years. If you wish, you can also order the guidebooks (in Finnish).

Please make sure to let us know your new address. You can contact us by sending an email, via the website or by using the form.

### SUBSCRIPTION PRICES

Full year 2021:  
Europe 2021 €45,80 /Four issues  
The rest of the world 2021 €51,60 /Four issues

The full year subscription includes four issues.  
The invoicing period is a full year. A continuing subscription will automatically continue the following year. The digital form is included in the subscription.

### SUBSCRIBER SERVICE

Contact information: Mallikerta MH  
Vanhamaantie 3-5 A6, 47200 ELIMÄKI, FINLAND  
theweaverspick@mallikerta.fi  
www.mallikerta.fi  
Tel. +358 40 170 2007 (Mon-Fri 9:00-17:00)  
Publisher: Mallikerta MH



## The Weaver's Pick

A magazine full of ideas for weavers

**Mallikerta**  
**The Weaver's Pick magazine**  
Vanhamaantie 3 - 5 A 6  
47200 ELIMÄKI FINLAND

Standard  
postage

I WOULD LIKE TO SUBSCRIBE TO  
the Weaver's Pick magazine

for myself  as a gift

**VOLUME 2021**  
(1-4/2021) subscription to Europe €45,80

**VOLUME 2021**  
(1-4/2021) subscription outside Europe €51.60

My new address as of \_\_\_/\_\_\_/2021

I wish to cancel my subscription at the end of the period I  
have paid for.

### SUBSCRIBER/NEW ADDRESS

\_\_\_\_\_  
Name

\_\_\_\_\_  
Street address

\_\_\_\_\_  
Postal code and town/city

\_\_\_\_\_  
Telephone

\_\_\_\_\_  
Email

### RECIPIENT OF A GIFT SUBSCRIPTION/MY OLD ADDRESS

\_\_\_\_\_  
Name

\_\_\_\_\_  
Street address

\_\_\_\_\_  
Postal code and town/city

\_\_\_\_\_  
Telephone

\_\_\_\_\_  
Email





## *The Weaver's Pick*

*A magazine full of ideas  
for weavers*

*Follow us on sosial media!*



[instagram/mallikerta](https://www.instagram.com/mallikerta)



[facebook.com/mallikerta](https://www.facebook.com/mallikerta)



[pinterest.com/mallikerta](https://www.pinterest.com/mallikerta)

[www.mallikerta.fi](http://www.mallikerta.fi)  
[www.theweaverspick.com](http://www.theweaverspick.com)



### BLANKETS AND SCARVES

Winter is the best time to weave soft blankets. You can start using the warm blanket straight way, just tie it on your shoulders and relax by the fireplace.

A scarf is a great idea as a gift. You have plenty of time to weave a scarf as a Christmas gift with these fast patterns!

