

Price €10,10 incl. VAT

*mallikerta*

# *The Weaver's Pick*

*A magazine full of ideas for weavers* ~~~~~ WINTER 4 | 2021

TRY A FUN TECHNIQUE

*Twice woven fabric*

**20**

CAUGHT UP IN LINEN

*Wind a warp for  
rustic linen cloths*

**8**





# The Weaver's Pick

A magazine full of ideas for weavers

In this issue

## 4 *The softest infinity scarf of the winter*

*Use macramé knots to tie the scarf into a tube*



## Weave - cut - weave

20 ” *Twice woven fabric changes its character based on the yarn and weft that is used.*

## *Pick fabric pearls into poppana*

” 28

*A regular poppana fabric gets a new look with a simple technique: pick strings of pearls with a knitting needle.*



*The beautiful star pattern table cloth was found on a old thrift store*

32



## SCARVES

- TIED UP 3767** 4  
The softest infinity scarf for the winter

## TOWELS AND TABLE RUNNERS

- LINEN WARP WITH SEVERAL YARNS 3768** 10  
There are different weights of linen yarns in the warp
- SINGLE YARN LINEN WARP 3769** 12  
The entire warp has been made with the same yarn
- PICKED POPPANA 3773** 28  
Sauna seat cover & pillow
- STAR 3774** 32  
The beautiful star pattern table cloth

## TEXTILES FOR HOME

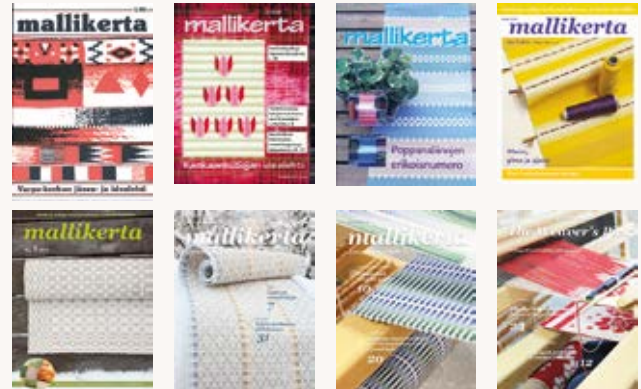
- CHENILLE STRIP BED COVER 3770** 14  
Double-width weave bed cover and pillow cases
- FIRST SNOW ON MOUNTAINS 3772** 24  
Twice woven little rug and pillow case

## ADDITIONAL

- CHENILLE STRIPS 3771** 20  
Warp for self-made chenille strips

EDITOR-IN-CHIEF	Marjatta Hirvi
LAYOUT	Marjatta Hirvi
PATTERN EDITING	Marjatta Hirvi, Kirsi Vakkari
PUBLISHER	Mallikerta MH
CONTACT INFORMATION	Mallikerta MH Vanhamaantie 3-5 A6, 47200 ELIMÄKI, FINLAND toimitus@mallikerta.fi
CUSTOMER SERVICE	www.mallikerta.fi Tel. +358 40 170 2007
PRINTING HOUSE	Lehtisepät Oy, Lahti

The Weaver's Pick magazine is published four times a year. Past issues are available from the publisher. The magazine accepts no responsibility for any typographical errors or other inaccuracies in the content that may cause our readers inconvenience, loss of working time or financial damage. The commercial use of the weaving patterns and the sharing of designs online is forbidden.



Mallikerta, the Finnish version of the Weaver's Pick, turns 40! The first issue of the magazine was published in the fall of 1981 and since 1982 the magazine has been published four times per year. This wouldn't have been possible without our weavers, who have kept the art of weaving alive in this changing world. The magazine was first published by a company that specialized in exporting looms and I founded Mallikerta as a separate company at the end of 2009.

Weaving as a hobby and as a profession faced difficulties in the 1990s as the depression changed how our economy worked as a whole. The depression forced the factory of Varpapuu looms to close even though at the same time weaving, the sales of yarns and amount of subscribers for Mallikerta went up! This situation was very similar to the past two years when people have had more time at home to focus on hobbies and learning new skills. However in the 1990s several large weaving houses were closed, and now during the pandemic even the few that were left have closed their doors due to restrictions. It remains to be seen if some of them will survive the effects of the pandemic especially in more rural areas.

Where there are weavers, there is a community. A community that shares experiences, joy and sadness, and that community passes the art of weaving to others and even to next generations. The communities might exist online in the future and the next generations might learn weaving from YouTube, but if you're interested in learning weaving fast, find your local weaving community. You might be able to bring your own expertise and ideas to the mix!

We're happy to hear that family looms have been passed to the next generation of inspired weavers especially in the past few years. A combination of skills of the past and ideas of the future would be a great recipe for the future of weaving.

*Marjatta Hirvi*





DESIGN OF PATTERN **Marjatta Hirvi** WEAVER **Kirsi Vakkari***The softest infinity scarf of the winter**Width of the scarf 33 cm, circumference 170 cm*

## Tied up 3767

The scarf has been finished into a tube in a fun and easy way. The yarns from an apron rod knots and the threads from end loop of the warp have been tied together with macramé knots. This technique uses almost all of the warp and there is no wasted material.

**The warp** Esito Looped Mohair Yarn, 70 % mohair, 26 % wool, 4 % polyamide, 240 g = n. 480 m, tex 500 bleached white

**Warp** width 35 cm  
the sett 4 ends/cm  
number of yarn ends 140  
length 2,3 m (one scarf)  
amount of warp yarn needed 154 g

**Reed** 1 per dent in a 40-dent reed (metric) = 40/1  
**Structure** Plain weave, twill, weft looped weave

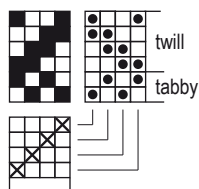
### AMOUNT OF WEFT YARN NEEDED

Esito Looped Mohair Yarn, 240 g = n. 480 m, tex 500

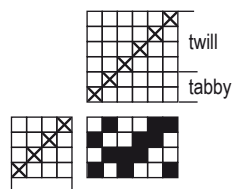
bleached white 88 g

Same yarn as in the warp.

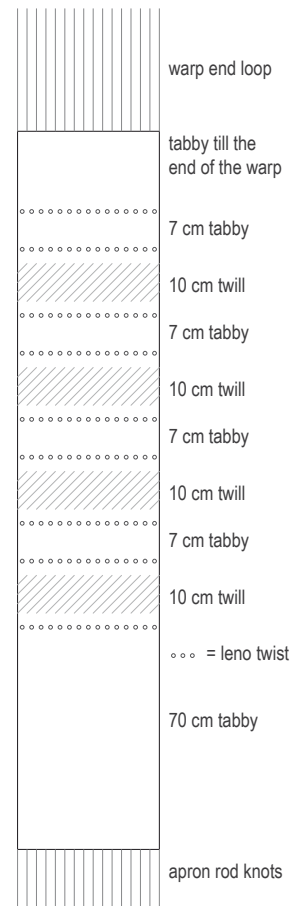
TABLE LOOM



FLOOR LOOM

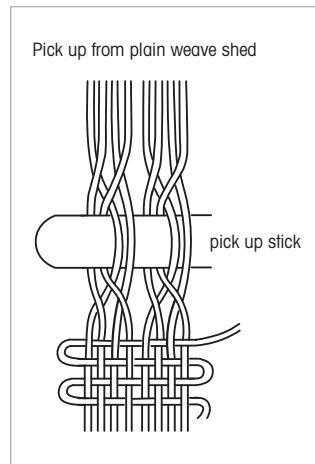






### WEAVING INSTRUCTIONS

The sett is 3,5 picks/cm. The woven length is 180 cm. The fabric was 32 x 166 cm off the loom. The scarf is striped with twill and plain weave with added picking technique. Please check the drawing on the right. Take the warp off the loom but don't cut the warp ends off. They will be used to tie the scarf together. If you weave several scarfs in the same warp, leave approximately 60 cms between scarfs. Hand wash cold, do not use a fabric conditioner.



### LENO TWIST TECHNIQUE

Open the plain weave shed. Pick up two lowered threads and lay over the pickup stick, then press down two raised threads under the pickup stick. After all of the warp ends are picked open the shed with a pickup stick. Throw the weft into the shed. Turn the pickup stick back to level and press the weft with it close to the fabric. The weft is in the right position when it is approx. 1 - 1,5 cm away from the fabric edge. Take the pickup stick out from the shed. Throw the next weft and beat it near the picked weft but not too close. Next wefts pushes the first weft and diminish the empty space between the picked weft and the first weft.

### Tip

You can try lace weaving with a long and wide ruler.

## Using macramé knots to tie the scarf ends together

Fold the scarf into a circle with the ends facing each other, leaving approximately 10 cms between the scarf ends. If you put the ends closer together, the knots will be shorter.

1. Pick four threads from both ends of the scarf.
2. From these four, take the two middle threads and tie them together with a regular overhand knot leaving the 10 cms between the scarf ends. Leave the other two threads to wait for the next step. Tie all of the threads in the sets of four below in the same manner.
3. Hang up the scarf for example on a stick so that the first end of the fabric is higher.
4. Pick the two threads from sets of four that weren't used yet. Use them to tie macrame knots downwards, so that the threads already tied are in the middle of the knots.
5. Turn the scarf so that the end of the scarf is on top. Now repeat the knots downwards. Make the knots until you reach the knots of the other end.
6. Finish the thread ends by threading them inside the knots.
7. Trim all of the ends that are still visible. You can set the scarf on a flat surface to finish the ends.



1.



2.

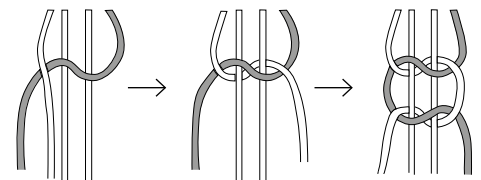


3.



4.

Macrame square knot



5.



6.



7.









DESIGN OF PATTERN **Marjatta Hirvi** WEAVER **Kirsi Vakkari**

## *Caught up in linen*



### PURE LINEN FABRICS

The most beautiful linen warp has been set on the loom and we started weaving the fabric. We decided to try a new technique with the linen and noticed the peculiar way this material acted on the loom. The stripes made out of different weights of linen yarn started to loosen and weaving started to become difficult.

We took out some of the yarns in the edges of stripes giving more room for the yarns that were left. This made all the difference and we finished the warp successfully. We made another warp using only one weight of linen yarn. Compared to the first one, this was a dream to weave and the fabric reacted well to wet finishing.

Many of our readers have old linen yarns with their own stories. They can be yarns you have spun yourself or treasures cherished that haven't found their use yet. Continue their story, make a warp and weave a fabric with memories. You can also purchase new yarn for the warp if you're unsure of the strength of your own yarns.







## INSTRUCTIONS FOR WINDING THE WARP

- 40 ends Linen 16/2 and Linen 8/1 in alternating order
- 8 ends Linen 8/2 (or Linen 16/4) and Linen 16/1 in alternating order = a stripe.

Repeat from the beginning 6 x (= 288 ends)

- 40 ends Linen 16/2 ja Linen 8 in alternating order
- = 328 ends in total

## AMOUNT OF WARP YARN NEEDED

All the yarns are unbleached.

128 g Linen 8/1, tex 206, 1 kg = approx. 5 000 m

127 g Linen 16/2, tex 103x2, 1 kg = approx. 4 900 m

47 g Linen 8/2 (Linvarp 8/2), 1 kg = approx. 2 400 m

12 g Linen 16/1, tex 103, 1 kg = approx. 11 200 m

= 314 g in total

Weave with the same yarn that was used in the warp. This will ensure the fabric reacts well to wet finishing.

## Rustic linen cloths

Finished size 40 x 51 cm, 2 pcs

Weave 1,5 cm tabby for the hem. Weave with the same yarn that was used in the warp, except leave out Linen 16/2 and weave the space between the stripes with Linen 8/1 only.

Wind the shuttle around the outermost warp end when there are two throws in the same shed in the treadling.

Leave a small empty place on both sides of the stripe as in the warp.

# Linen warp with several yarns 3768

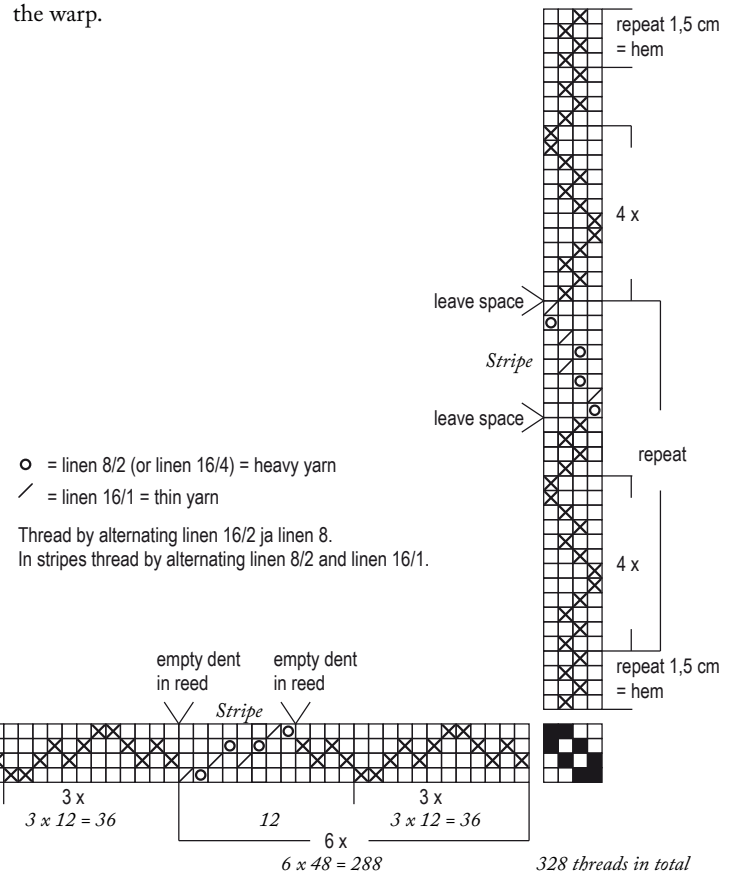
There are different weights of linen yarns in the warp

The warp Different weights of linen yarns

**Warp** width 43,5 cm  
the sett 8 ends/cm (+ 12 empty dents in the reed)  
number of yarn ends 328  
length 4,3 m

**Reed** 2 per dent in a 40-dent reed (metric) = 40/2  
At the edges of 8 ends stripes: Leave one empty dent at both edges of the stripe

**Structure** Lace weave





The warp ends in the stripes might loosen because the fabric is sparser in the stripes. Avoid tightening the looser warp ends and continue weaving as normal. Place an extra warp stick under the warp ends on the beam.

The sett is 8 picks/cm. The height of the repeat is around 8 cm. The woven length is 61,5 cm + hem á 1,5 cm (measured under tension). The fabric was 42 x 59 cm off the loom. The borders have been sown before wet finishing. The size of the cloth after wet finishing was 40 x 51 cm. Wash in 40 - 60°C. Please see page 13 for washing instructions.

#### AMOUNT OF WEFT YARN NEEDED for one cloth

37 g Aivina 8/1, tex 206, 1 kg = n. 5 000 m

6 g Aivina 8/2, tex 210x2, 1 kg = n. 2 400 m tai aivina 16/4

2 g Aivina 16/1, tex 103, 1 kg = n. 11 200 m

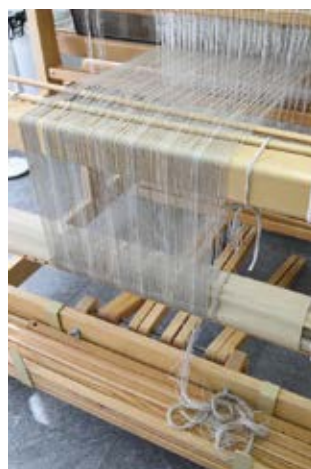
All the yarns are unbleached.

There were more yarns in the stripes in the beginning. We noticed issues with these and chose to take out some of the yarns. - Picture 1.

We wove the shorter cloths with the same yarns found in the warp. - Picture 2.

We wove a white runner with 16/2 white line linen and the stripes with white yarns match the weight of the warp ends. - Picture 3.

The white runner fabric didn't react well to wet finishing. The tight yarns in the warp and the softer yarns in the weft reacted in different ways. The small fabric in the left hand upper corner is the fabric that was woven before extracting some of the warp ends. - Picture 4.



1.



2.



3.



4.

#### TIPS FOR WEAVING A LINEN WARP

Wind maximum two warp threads at the time to prevent warp ends spinning together. If the warp ends begin to twist, open them while weaving.

Place as many warp rods as possible between layers of warp on the warp beam and keep the warp in high tension while beaming. Please do not tighten the warp ends that seem to be looser than others. Just let all the threads wind on the beam on the tensions they are.

Use strong and glossy line linen yarns for the warp and you don't have to be worried about broken warp ends.

Before you start weaving, check that the heddles and the reed are on the right level. The warp ends should pass without the hindrance from the warp beam through the heddles and the reed to the breast beam.

Roll the warp forward often and keep the stretcher near the edge of the fabric and move it often. Beat the weft once into the fabric. Attach the stretcher as soon as possible to have the right width for the fabric from the start.

If there are mended warp ends with tails please be aware that they don't twist around the other warp ends.

When mending the end, make the knot of the original broken warp end and the new temporary warp end as far as possible on the back beam or further over. Take the original warp end back to the work as soon as it is long enough to reach the fabric. Alternatively, you can keep the knot untied and finish the fabric, if the length intended allows it.

Remove the lint from the reed and heddles regularly.

The firm linen warp can't be pulled at the same tension as warps of softer yarns. This makes a false impression of loose warp ends here and there. Do not try to tighten the ends with tucking any rolls or sticks under the warp ends for after that the warp will be truly uneven. Just place a warp rod or several rods under the warp on the warp beam. Press the rod back down every time you move the warp forward.

Cut the warp and tie on the warp ends again if the weaving becomes impossible.





## Long sauna seat cover

Finished size 37,5 x 132 cm

Weave 3 cms of plain weave in the beginning and end for the borders. Weave according to the treadling order with the same yarn as the warp. Turn the weft around the outmost warp end when there are two throws in the same shed consecutively. The density of the weft is 7,5 picks/cm. The woven length is 158 cm including the borders. The size of the fabric before wet finishing 41,5 x 152 cm and after wet finishing 37,5 x 136 cm.

AMOUNT OF WEFT YARN NEEDED for one runner

Linen 8/1, tex 206, 1 kg = approx. 5 000 m  
unbleached 105 g

## Short white sauna linens

Finished size 38 x 54 cm, 2 pcs

Weave 3 cms of plain weave in the beginning and end for the borders. Weave with bleached linen 8/1 according to the treadling order. Turn the weft around the outmost warp end when there are two throws in the same shed consecutively. The density of the weft is 7,5 picks/cm. The woven length is 66 cm including the borders. The size of the fabric before wet finishing 41,5 x 64 cm and after wet finishing 38 x 58 cm.

AMOUNT OF WEFT YARN NEEDED for one piece

Linen 8/1, tex 206, 1 kg = approx. 5 000 m  
bleached 46 g

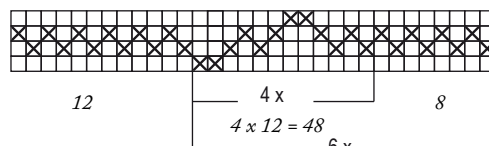
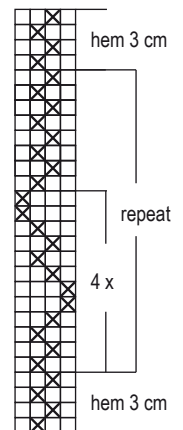
# Single yarn linen warp 3769

The entire warp has been made with the same yarn

The warp Linen 8/1, unbleached, tex 206,  
1 kg = approx. 5 000 m

Warp width 43,5 cm  
the sett 8 ends/cm  
number of warp ends 348  
length 4,3 m  
amount of warp yarn needed 318 g

Reed 2 per dent in a 40-dent reed (metric) = 40/2  
Structure Lace weave



6 x 56 = 336

348 threads in total



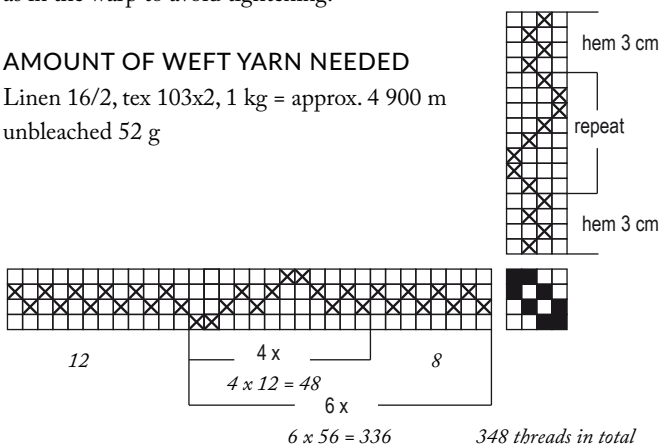
## Line linen table runner

Finished size 38 x 59 cm

Weave 3 cms of plain weave in the beginning and end for the borders. Weave with bleached linen 16/2 according to the treadling order. Turn the weft around the outmost warp end when there are two throws in the same shed consecutively. The sett is 7,5 picks/cm. The woven length is 70 cm. The size of the fabric before wet finishing 41,5 x 68 cm. Plain weave stripes might tighten more than the patterned stripes. Take the fabric off the loom after one runner and tie on the warp again to have an even tension. You can also weave plain weave stripes as in the warp to avoid tightening.

### AMOUNT OF WEFT YARN NEEDED

Linen 16/2, tex 103x2, 1 kg = approx. 4 900 m  
unbleached 52 g



### SEWING THE BORDERS

Sew 3-step zigzag in the ends of the fabric. Sew the border by hand using a thin but strong linen thread. You can finish the ends either before or after the wet finishing. We however recommend finishing the ends before wet finishing as it is easier to handle the fabric and the width of the fabric is correct.

### WASHING THE LINEN FABRICS

Wash the fabric in lukewarm water. Use detergent and rinse carefully. Unbleached linen gives out its natural color in the first wash. Set the fabric to dry on a flat surface or around a tube that is resistant to water. In this case, make sure the fabric is tied around it tight enough. Press the fabric or iron it while it is still damp. Use an ironing cloth. After the first wash, you can start machine washing the cloth. Machine wash in 40°C. Wash only linen cloths in the same load as linen gives out lint easily. The linen cloth is rough at first but it softens with time. The unbleached color lightens with every wash.





DESIGN OF PATTERN **Marjatta Hirvi** WEAVER **Kirsi Vakkari***Double bed cover**Finished size 246 x 267 cm*

## Chenille strip bed cover 3770

This double bed cover has been woven as a double width weave structure. The tufted stripes that soften the surface of the cover are made with chenille strips that we have woven ourselves, and the rest of the weft is cotton fabric strip. The warp is 6-ply cotton twine. The cover can also be woven from poppana or chenille yarns

The warp 6-ply Liina Cotton Twine, tex 30x6,  
1 kg = n. 5 300 m, unbleached

**Warp** width 130 cm  
the sett 8 ends/cm  
number of warp ends 1040  
length 4,72 m (on cover and pillow cases)  
amount of warp yarn needed 945 g

**Reed** 2 per dent in a 40-dent reed (metric) = 40/2  
Space out the left selvage: 1, 0, 1, 0, 2, 2...

**Structure** Double width weave

### WEAVING INSTRUCTIONS

The colored stripes and tuft chenille stripes doesn't repeat in the same way in the fabric. Use the cotton fabric strips between the chenille strips according to the color scheme, see page 16. This softens the pattern in the cover and the overall look is calmer.

The chenille strip is cut after one throw in the upper layer and one throw in the lower layer and finished in the edge. Unravel the fabric from the chenille strips that hang outside of the cover selvage and finish with a knot. Finish the ends of the knots in the shed. The chenille strip can also be continued in the middle of the fabric, but it is more practical to cut the strip after each weft in this cover fabric.







Leave 10 cm of the weft for finishing in both ends of the fabric.  
 The sett is 3 + 3 picks/cm (3 picks in one fabric layer).  
 - 2 cm inner hem allowance with doubled unbleached Cotton 8/2  
 - 32 cm with multicoloured cotton strips (includes the hem 2 cm)  
 Start now the first \*Chenille stripe. Weave a chenille stripe at a distance of 27 from each other. In these chenille stripes the color of the cotton strip (between chenille stripes) is what is in turn in the color order.

- 31 cm multicolored cotton strip
- 7 cm white cotton strip
- 7 cm multicolored cotton strip
- 7 cm white cotton strip
- 46 cm multicolored cotton strip
- 7 cm white cotton strip
- 7 cm multicolored cotton strip
- = the middle of the cover

Weave the other end of the cover as a mirror image.  
 Remember to weave 32 cm with cotton strips after the last chenille stripe as in the beginning. There will be 7 chenille stripes in total. The woven length is 281 cm + inner hem allowance 2 + 2 cm.

\* Chenille stripe 7 cm: (1 chenille weft = 1 throw in the upper layer and 1 throw in the lower layer)

- 1 chenille weft
- 6 cotton strip wefts (= 6 throws in the upper layer and 6 in the lower layer according to the treadling order)
- 1 chenille weft
- 2 cotton strip wefts
- 1 chenille weft
- 6 cotton strip wefts
- 1 chenille weft

The required length for one chenille stripe is 5,98 m. The leftover of one chenille stripe is around 45 cm. Please see page 23 for weaving instructions of chenille stripes.

### FINISHING

Tie the warp ends 2 + 2 with overhand knots. Sew the borders so that only the cotton section is inside the hem. The height of the border is 2 cm. Remove the lint that may come out of the fabric. The cover will shrink approximately 5 – 8 % after washing.

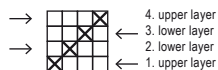
### DOUBLE WIDTH WEAVE CHENILLE STRIP BED COVER

Treading:

- ✕ = cotton strip
- = chenille strip

Cut and finish in the shed the chenille strip after one weft (1 throw in upper layer and 1 throw in lower layer).

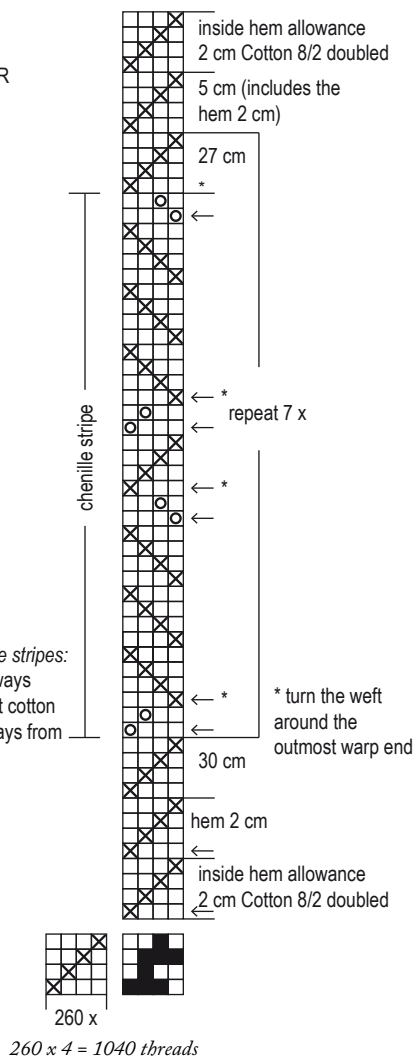
Direction of the throw



Exception: Directions in *chenille stripes*: Throw the first chenille strip always from the right edge and the first cotton strip after the chenille strip always from the right edge.

The right edge is open and the left edge is closed.

Sleying the reed:  
 Space out the left edge  
 1, 0, 1, 0, 2, 2 ...

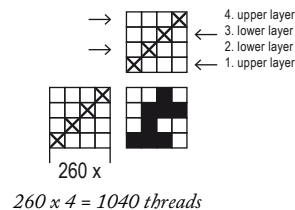


### DOUBLE WIDTH WEAVE WITHOUT THE CHENILLE STRIPS

PILLOW COVER FABRIC on page 19

The right edge is open and the left edge is closed.

Sleying the reed:  
 Space out the left edge  
 1, 0, 1, 0, 2, 2 ...





The cotton strip is cut 10 mm wide from thin but dense fabric. The cut is straight along the threads but cut thick fabrics diagonally. The same cotton fabric is used in the chenille strips and as the weft in the bed cover. Please see the page 23 for weaving instructions of the chenille strips.

### AMOUNT OF WEFT YARN NEEDED

Cotton 8/2 boubled, unbleached 35 g (inner hem allowance).

Self cut cotton strip, width 1 cm, thin cotton sheet fabric

- white 0,46 kg

- multicoloured (checkered) 2,27 kg

Cotton strips 2,73 kg in total

Chenille strips, self-made multi-strand yarn made of cotton yarns and cotton strips (see page 23 for weaving instructions)

- 14 pcs á 5,98 m chenille strip

The thin and soft fabric can be cut straight along the threads creating lighter strips and fabric. The fabric can also be cut diagonally. The fabric that has been cut diagonally will make the fabric denser and heavier. Choose which one is better for your project! You can also weave from ready made poppana weft.







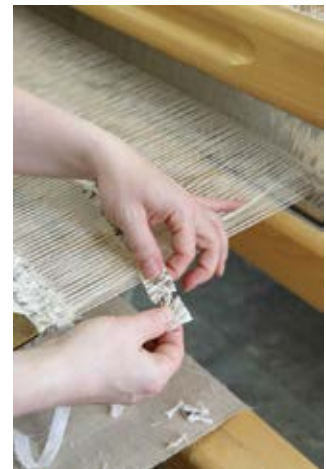
1.



2.



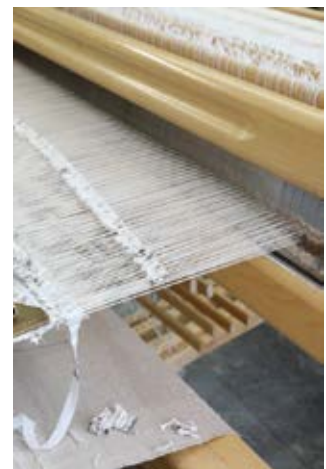
3.



4.



5.



6.

## *How to weave chenille strips into the cover fabric*

The cover fabric has been made with chenille strips alternated with throws of self cut strips. Cut the chenille strip after one throw in upper shed and one throw in lower shed to avoid a loop in the edge of the fabric.

1. Throw the chenille strip into the upper shed. Finish the end of the chenille strip in the shed. Make sure that the strip is not twisted. Beat the weft in.
2. Throw the weft into the lower shed.
3. Cut the weft but leave a few cms of material for finishing the edge.
4. Unravel the end of the weft to the edge of the fabric. You're left with only the warp ends.
5. Tie the warp ends of the strip.
6. Finish the warp ends in the shed and beat the weft in.



Finished size 65 x 59 cm, 2 pcs

## Pillow cover fabric to the end of the cover warp

### AMOUNT OF WEFT NEEDED

Diagonally cut fabric strips, width 1,1 – 1,2 cm  
 Multicoloured cotton sheet fabric (wide striped pattern) 994 g  
 The fabric was thin and dense.

### WEAVING INSTRUCTIONS

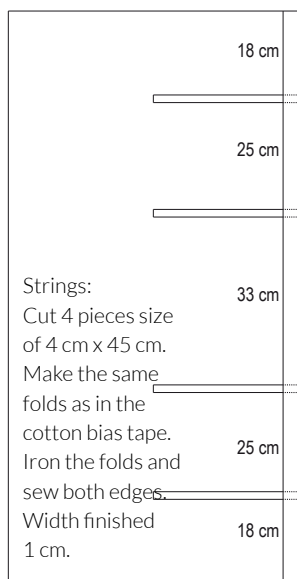
Leave approximately 7 cms for the finishing at both ends of the fabric. Weave 70 cm with cut fabric strips according to the threading order on page 16. The density of the weft is 4,5 + 4,5 strips/cm (4,5 strips in one layer). The size of the fabric off the loom is 124,5 x 66 cm, spread size 249 x 66 cm.

### FINISHING

Tie the warp ends 2 + 2 with weavers knots. Trim the fringe to the length of about 1,5cm. The fabric is enough for two pillows. Sew zigzag in the border of the pillow, ie. in the middle of the fold of the fabric. Cut the pieces apart. The size of one piece of fabric is 124 x 66 cm.

### SEWING THE PILLOW

The open edge of the pillow is finished with the same fabric that was cut into strips for the weft. The finished size of the border is 6 cm. The fabric will be double on the right and the reverse side. Cut a piece of 129 x 24 cm from the fabric (the size of the woven piece + 5 cm). Iron the fabric folded lengthwise and fold one more time with both of the edges in the middle. Iron the folds to make sewing easier. You'll end up with a long and narrow piece of fabric. Open the folds after ironing and sew the fabric into the woven cover fabric 6cms from the edge with the right sides facing. Fold the fabric. Turn the fabric to the reverse side and turn the short ends of the fabric to the reverse side. Attach strings to the reverse side under the fabric that will be used to hold the pillow in place. Sew the side seams together from the reverse side. Turn the cover right side out.



Weft: The striped sheet fabric was cut diagonally, sewn into a loop and cut with a rotary cutter to strips width of 1,1 - 1,2 cm.





*Weave,  
cut and  
weave  
again*



DESIGN OF PATTERN Marjatta Hirvi WEAVER Kirsi Vakkari

*Warp for self-made chenille strips*

## Chenille strips 3771

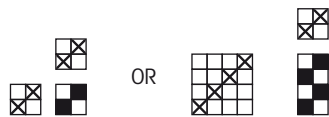
**The warp** Cotton 8/2, unbleached, tex 74 x 2,  
1 kg = approx. 6 800 m

**Warp** width 34 cm  
the sett 16 ends/cm  
number of warp ends 64 + 1 cotton twine at both edges\*

**Length** 9,8 m (finished length is approx. 8,4 m)  
amount of warp yarn needed 90 g

**Reed** Two times 2 per dent in a 80-dent reed (metric), 16 empty  
dents, two times 2 per dent... The empty space is 2 cm.  
= 80/2, 2

**Structure** Plain weave



\*We added one 18-ply cotton twine in both edges of the warp. The cotton twine is not threaded in the heddle. The twine is threaded in the reed 2 cms from the edge of the fabric (=equal to the distance of the empty spaces in the reed). The twine is not tied in the beginning with the other warp ends, as it is tied alone in to the apron rod. In this way the cotton twine stays tight and in the right place.

The warp will make 16 pieces of chenille strips.

The chenille strips will be soft and light or hard and tight based on the threads and materials used. We made very sturdy chenille strips using wool and linen threads, and these are good for rugs. If you want to make chenille strips for bed covers, we recommend a variety of cotton threads mixed with self cut cotton strips.

### WEAVING INSTRUCTIONS

The fabric will shrink when it's woven. Weave a couple of cms with extra weft that will be unraveled later. You should use thick weft to ensure the beginning is wide enough. Please don't use a stretcher. Beat with an open shed so the weft has room in the edges and it's not too tight. Leave a little extra weft in the edges. The extra cotton twine in the edges will help weaving the edges.







## *Chenille strips for a rug or pillowcase*

*on page 24*

### AMOUNT OF WEFT YARN NEEDED

wool yarns 485 g

linen yarns 190 g

cotton yarns 35 g

### WEAVING INSTRUCTIONS

Wind on the shuttle simultaneously around 3 wool yarns + 4 linen yarns, but occasionally change 1 linen yarn to 1 cotton yarn. Use colours you want into the final weave. Weave 3 – 8 throws with white weft in a random order otherwise dark coloured fabric. The narrow white stripes form the white “snowflake” spots on the final weave. The woven length is 2,50 m. The length of the fabric off the loom was 2,43 cm. You get 14 pcs of chenille strips + strips from selvages from the fabric.

Take the fabric off the loom and tie the warp ends to avoid unravelling. Cut the fabric between the warp groups.

*NB!* The finished fabric may have spots where the warp threads are broken while rolling onto the cloth beam. You can machine-sew the broken section before cutting the strips apart. Sew a straight stitch two times side by side.

## Chenille strips for a double width weave bed cover

on page 14

### AMOUNT OF WEFT YARN NEEDED

- Cotton yarns 580 g in total.

Cotton 8/2 bleached 109 g, Cotton 16/2 bleached 62 g, Cotton twine 12/4 beige 174 g, Cotton 8/2, unbleached 140 g and Cotton 16/2 unbleached 95 g. Join one thread of each quality to the weft.

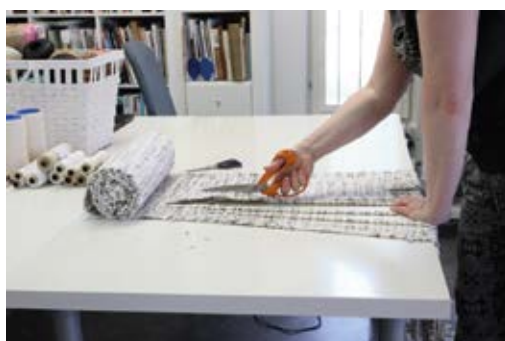
- Cotton strip 590 g. Width 10 mm, cut from a chequered fabric. Cotton strips for the bed cover weft is cut from the same fabric.

### WEAVING INSTRUCTIONS

Weave alternating 2 self-made multiple strand yarn and 1 cotton strip as weft. The sett is 8 multiple strand yarn + 3 – 4 cotton strip picks/2 cm. The woven length is 6,13 m. Finished length of the chenille strip is 5,98 m. You get 14 pcs of chenille strips + strips from selvages from the fabric.

Take the fabric off the loom and tie the warp ends to avoid unravelling. Cut the fabric between the warp groups.

The length of the chenille strips has been calculated so that it can be used for two throws into the upper and lower layers of the double width weave cover. The width of the cover is 130 + 130 cm. From one chenille strips was left over about 45 cm. Extra length went to the fact that the chenille strips were cut after one throw in both layers, the end of the strip was unravelled and knotted. When calculating the required length, leave the strips at the edges in reserve. If you need them, cut their edges open and trim even.









DESIGN OF PATTERN **Marjatta Hirvi** WEAVER **Kirsi Vakkari***"Twice woven" fabric*

## *First snow on mountains 3772*

Weave tight chenille strips of wool and linen threads and weave a sturdy little rug and pillowcase with them. You can weave both in the same 6-ply cotton twine warp.

The warp 6-ply Cotton twine, tex 30x6,  
1 kg = approx. 5 300 m, unbleached

Warp width 42 cm  
the sett 4 ends/cm  
number of warp ends 168 + 4  
length 10 m  
amount of warp yarn needed 325 g

Reed 1 per dent in a 40-dent reed (metric) = 40/1  
Structure Plain weave and rib weave

### *Twice woven little rug*

*Finished size 40 x 42 cm*

Start and finish the rug by weaving á 3 cm hem with doubled unbleached 6-ply cotton twine. Weave the rug with chenille strips and 6-ply cotton twine (single). Throw the chenille strip in the rib weave shed and the cotton twine in plain weave shed.

Weave 4 picks of cotton twine between every Chenille strip pick. Attach the stretcher as soon as possible to prevent narrowing. Make sure that the strip is not twisted. The woven length is 43 cm + hems.







## AMOUNT OF WEFT YARN NEEDED

8 pcs Self-made chenille strips made of wool yarns and linen yarns á 2,43 m = n. 19,5 m. (instructions on page 21)

6-ply cotton twine, tex 30x6, 1 kg = approx. 5 300 m unbelached 29 g

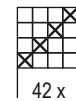
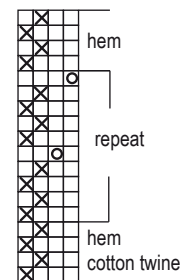
## FINISHING

Tie the warp ends 2 + 2 with overhand knots. Fold the warp threads on top of the hem and sew with a 3-step zigzag stitch. Shorten the threads and sew the hem by hand using a strong sewing thread. Sew in slip stitches close to the chenille fabric.



TWICE WOVEN  
LITTLE RUG

○ = chenille strip  
× = 6-ply  
cotton twine



## HOW TO WEAVE WITH CHENILLE STRIPS

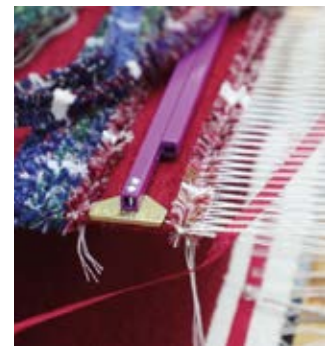
Start: Tie the warp ends of the chenille strip. Shoot the weft in the shed and turn the tails of the warp threads over the outmost warp end and finish in the shed. Pictures 1. and 2.

End the chenille strip: Unravel the end of the strip to the edge of the fabric. Tie the warp ends of the strip. Turn the tails over the outmost warp end and finish in the shed. Pictures 3 - 5.

Join the chenille strips: Tie together the warp ends of the chenille strips. Cut the tails of the warp threads into same length as the chenille strip tufts. Picture 6.



1.



2.



3.



4.



5.



6.

## Twice woven pillow case

Finished size 40 x 46 cm

Start and finish the rug by weaving 1 cm with doubled unbleached 6-ply cotton twine for the seam. Throw the chenille strip in the rib weave shed and poppana strip in the plain weave shed. Weave 4 picks of poppana between every chenille strip pick. The zipper is sewed to the backside of the pillow.

- 1 cm doubled cotton twine for the seam.
- 25 cm plain weave with poppana (half of the backside).
- 45 cm front side of the pillow: Weave 5 cm chenille strip stripe (5 shoots with chenille strips, 4 shoots of poppana between each chenille shot). Weave 5 cm plain weave with poppana between every chenille strip stripe. Weave 5 chenille stripes in total.
- 25 cm plain weave with poppana (half of the backside).
- 1 cm doubled cotton twine for the seam.

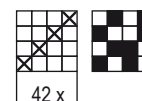
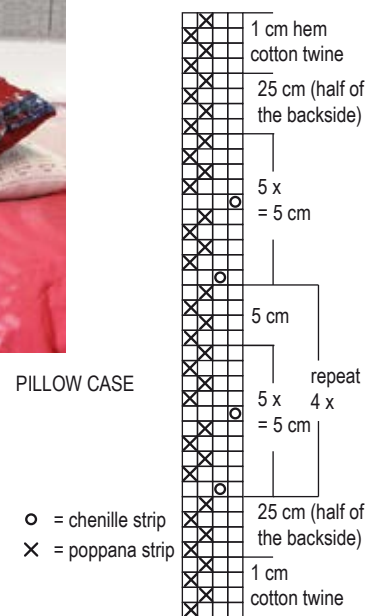
The woven length is 95 cm + seams á 1 cm. The size off the loom is 40 x 93,5 cm.

### AMOUNT OF WEFT YARN NEEDED

Poppana strip, width 10 mm, Poppanavakka  
5708 cherry red 340 g

5 pcs self-made chenille strips made of woolyarns and linen yarns  
á 2,43 m = approx. 10,5 m (instructions on page 21)

6-ply cotton twine for the seams 3 g



### FINISHING

Tie the warp ends. Machine sew the thread tails on the reverse side of the seam. Trim the threads. Sew the zipper to the backside of the pillow case. Sew the seams by hand with close stitch. Zipper is in the middle of the backside. Sew or buy matching sized inner cushion.







*Decorate the surface with strings of pearls*



DESIGN OF PATTERN **Marjatta Hirvi** WEAVER **Kirsi Vakkari**

Poppana is a long bias-cut strip of cotton fabric for weaving. A poppana is the fabric woven with poppana strips. The warp for poppana is nearly always 6-ply cotton twine.

*Sauna seat cover & pillow*

## Picked Poppana

### 3773

Do you have a warp for poppana already on the loom? Weave a sauna seat cover and a small sauna pillow to the warp with poppana and self-cut cotton strips. With an easy technique you'll get a new look for the fabric: Pick up cotton pearl strings with a knitting needle onto the fabric.

The warp 6-ply Cotton twine, tex 30x6,  
1 kg = approx. 5 300 m, unbleached

Warp width 42 cm  
the sett 4 ends/cm  
number of warp ends 168 + 4  
length 10 m  
amount of warp yarn needed 325 g

Reed 1 per dent in a 40-dent reed (metric) = 40/1  
Structure Plain weave, weft looped weave



*Finished size 40 x 77 cm*

### Sauna seat cover

#### WEAVING INSTRUCTIONS

Start and finish the fabric by weaving 0,8 cm with doubled unbleached 6-ply cotton twine for the inner hem allowance. Weave the fabric by alternating two shots of poppana and one shot of self-cut cotton strip. Pick up pearls from the cotton strip shot. The length of the cotton pearl strings are 3 - 8 cm. Place strings freely on the fabric. The sett is 6 picks/cm. The woven length is 82 cm.







#### AMOUNT OF WEFT YARN NEEDED

- Poppana strip, width 10 mm, Poppanavakka  
5705 red 190 g

- Self-cut cotton strip, width 10 mm  
red-lilac multicoloured 150 g

The fabric is cut straight along the threads from cotton sheet fabric.

- 6-ply cotton twine 5 g for the hems

#### AMOUNT OF WEFT YARN NEEDED

Tie the warp ends 2 + 2 with overhand knots. Fold the warp threads on top of the hem and sew. Trim the threads. Sew the hem by hand using a strong sewing thread.

*Finished size 20 x 18 cm*

### ***Small sauna pillow***

Start and finish the fabric by weaving 0,8 cm with doubled unbleached 6-ply cotton twine for the seam. Weave the fabric by alternating two shots of poppana and one shot of self-cut cotton strip. The sett is 6 picks/cm. The woven length is 22 cm.

#### AMOUNT OF WEFT YARN NEEDED

- Poppana strip, width 10 mm, Poppanavakka  
5705 red 53 g

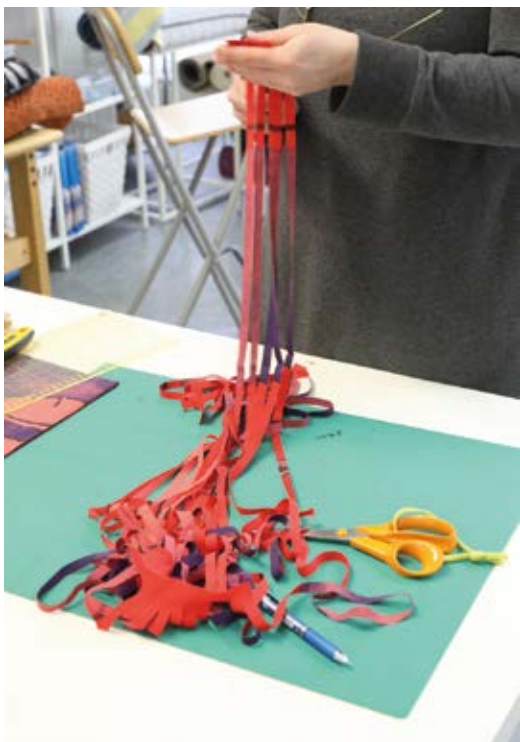
- Self-cut cotton strip, width 10 mm  
red-lilac multicoloured 29 g

- 6-ply cotton twine 5 g for the seams

#### AMOUNT OF WEFT YARN NEEDED

Tie the warp ends 2 + 2 with overhand knots. Sew 4 pcs strings á 30 cm of cotton bias tape. Fold the piece in half right sides together. Place the strings between the fabrics and pin 2 cm away from the corners. Sew the raw edges. Turn the right side out. Sew a matching sized inner cushion and slip in the pillow case. Sew the open edge by hand.

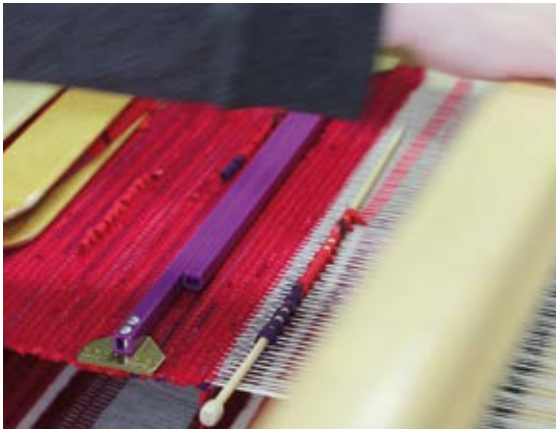
The colours are well displayed in the cotton pearls that are picked up from the multicoloured fabric. The fabric is cut straight along the threads from cotton sheet fabric.



Fasten the small woven pillow on the wooden sauna pillow with strips.



1.



2.



3.



4.



## How to pick up cotton loops

The structure is tabby. Weave the fabric by alternating two shoots of poppana strips and one shoot of self-cut cotton strip. Start to pull up loops from the side you shuttled the weft in. Pull up loops from self-cut cotton strip weft.

Use a 5 mm knitting needle for picking.

1. Shoot the weft in and keep the shed open. Pull up loops on the knitting needle from the space between the rising warp ends. Leave always two rising warp ends between each picked loop.
2. Beat the looped weft in.
3. Weave two poppana strip wefts.
4. Draw out the knitting needle and continue weaving.

*Tip:* You can also pick up several looping rows sequentially as a pearl surface. Shoot always two poppana wefts between the picked rows.







DESIGN OF PATTERN **Marjatta Hirvi** WEAVER **Kirsi Vakkari***Finished size 49 x 136 cm*

## Stars 3774

**The warp** Cotton 16/2, unbleached, tex 36x2,  
1 kg = approx. 13 640 m  
**Warp** width 50,7 cm  
the sett 16 picks/cm  
number of warp ends 811  
length 3,35 m (approx. 2 m finished fabric)  
amount of warp yarn needed 195 g

**Reed** 2 per dent in a 80-dent reed (metric) = 80/2  
**Structure** Undulating twill, traditional pattern



The beautiful star pattern tablecloth was found at an old thrift store. The pattern is much the same as the familiar Snowflake, but the central motifs are different. We adapted the pattern and wove it with a thin colored linen yarn into an unbleached cotton yarn warp.

### AMOUNT OF WEFT YARN NEEDED FOR ONE METER

Linen 16/1, tex 103, 1 kg = approx. 11 200 m  
approximately 85 g for one meter (the sett 16 picks/cm)

You can use also linen 8 as a weft. The motif will be slightly longer.  
Linen 8 or tow linen 8, tex 206, 1 kg = approx. 5 120 m  
approximately 120 g for one meter (the sett 12 picks/cm)

### RED TABLE RUNNER

Finished size 49 x 136 cm

Weave 140 cm according to the treadling order. The woven length is 140 cm, including the hems. The sett is 16 picks/cm.

Amount of weft yarn needed for one table runner:

Aivina 16/1, tex 103, 1 kg = approx. 11 200 m  
Garnhuset i Kinna  
49 burgundy red 124 g

### DARK GREY SMALL TABLE CLOTH

Finished size 49 x 34 cm

Aivina 16/1, tex 103, 1 kg = approx. 11 200 m  
Garnhuset i Kinna  
228 dark grey 32 g

### FINISHING

Sew 3-step zigzag on the ends. Match the pattern motifs of the hem and the fabric and sew the hem by hand.







In a coloured sample weave the weft is linen 16/1 colour number 88 and in a natural colour sample the weft is linen 8/1. The motifs are longer in natural colour sample for the linen 8 is heavier than linen 16/1.



*Weaving with one shuttle is fast and you have a runner ready in no time*

**Narrow table runner:**

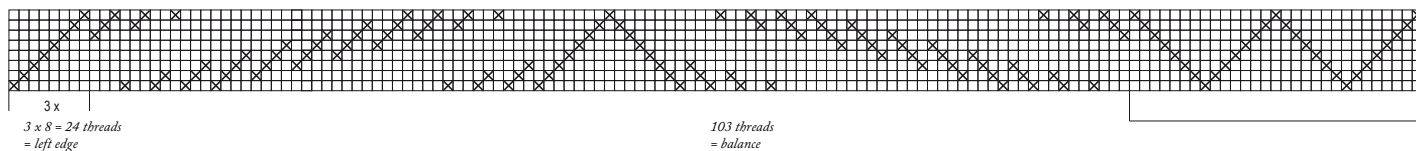
The right border 24 threads  
 Repeat 5 x 132 threads = 660 threads  
 Balance 103 threads  
 Left border 24 threads  
 811 threads in total : 16 = width 50,7 cm  
 Reed: 2 per dent in a 80-dent reed (metric) = 80/2

The warp yarn: Cotton 16/2, 1 kg = approx. 13 640 m  
 Amount of warp yarn needed for one meter is approximately 60 g. This width is in the pictures.

**Wide table cloth:**

The right border 24 threads  
 Repeat 17 x 132 threads = 2244 threads  
 Balance 103 threads  
 Left border 24 threads  
 2395 threads in total : 16 = width 149,7 cm  
 Reed: 2 per dent in a 80-dent reed (metric) = 80/2

The warp yarn: Cotton 16/2, 1 kg = approx. 13 640 m  
 Amount of warp yarn needed for one meter is approximately 175 g.  
 There is no picture of table cloth in this width.

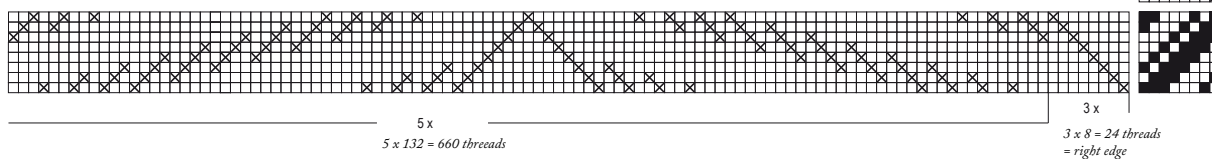
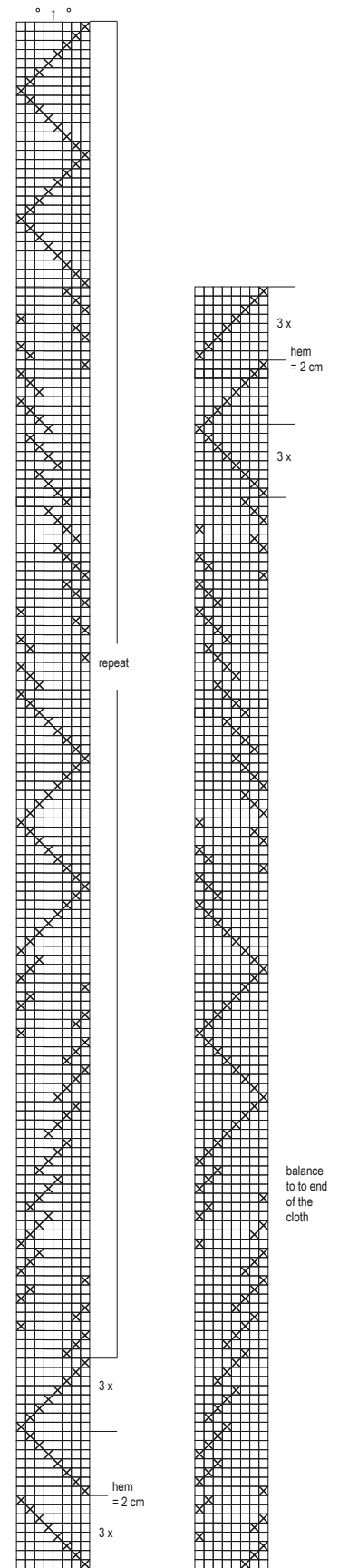




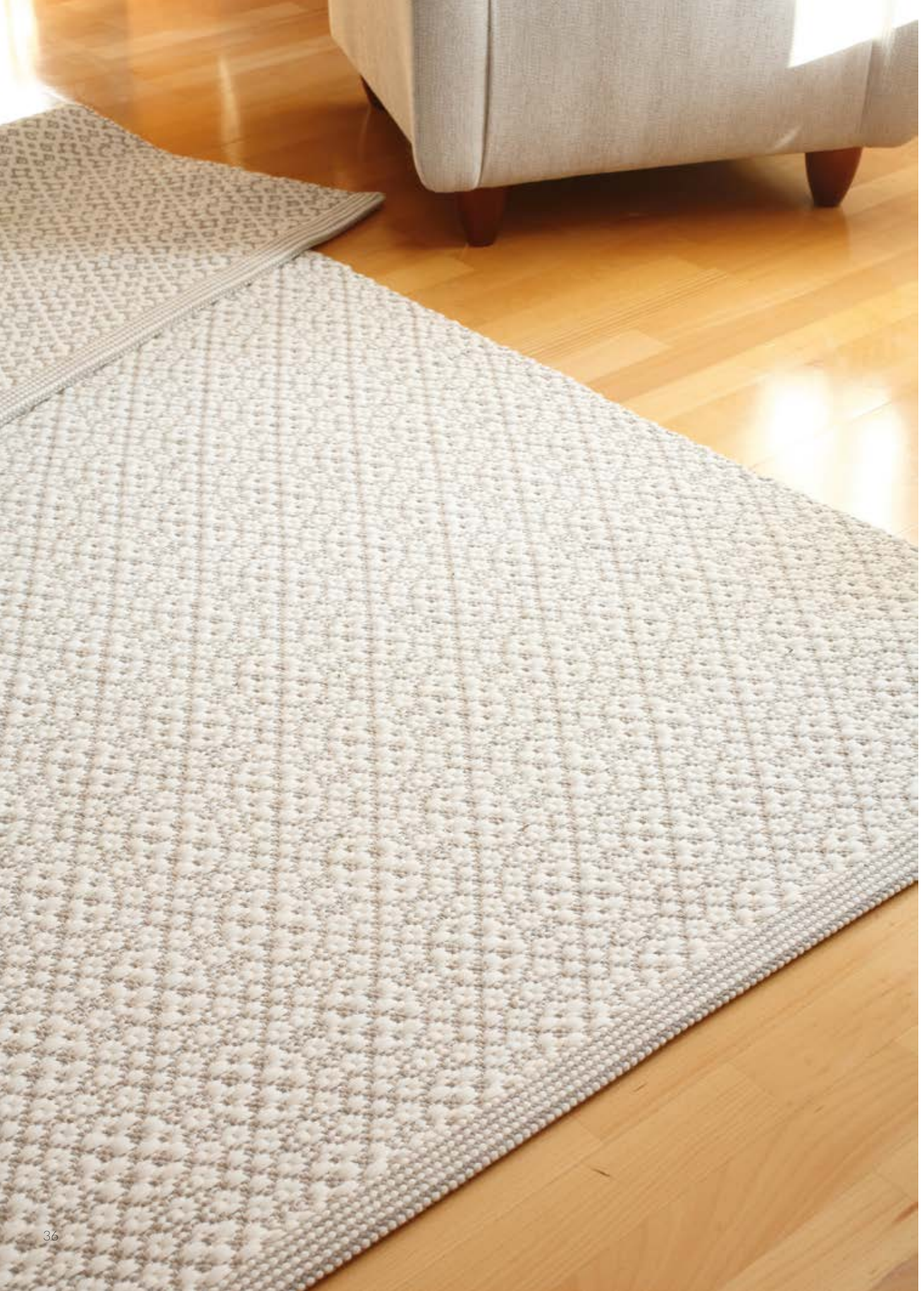


The star motif fabric is woven with a one weft that is the same strength as warp threads. The colors of the warp and the weft mix well in a thin cloth. Warp is wound of cotton yarn and the weft is linen yarn. The unbleached warp lightens the colour of the weft, so darker colours are also suitable for the weft. Try dark black colours as well a bright white for the weft. Colours from left to right:

- petrol 88
- green 57
- cherry rose red 47
- blue 89
- burgundy red 49
- grey 23
- rasberry red 38
- dark blue 86
- blue 80
- dark grey 228
- dark blue 86

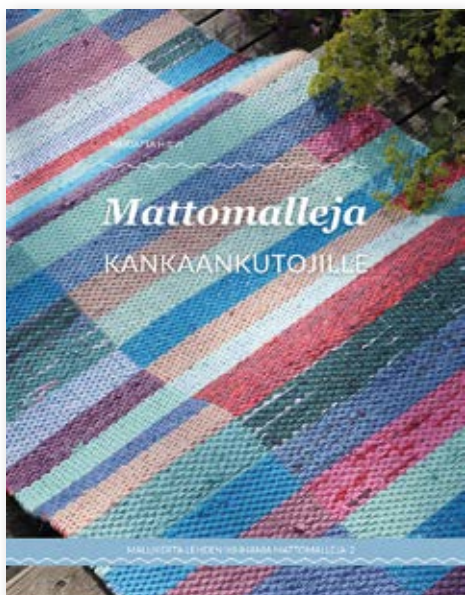








## NEW RUG RAG PATTERN BOOK! (In Finnish)



The most beautiful rug designs of the Mallikerta magazine in one book.

### Rag rugs

*Rib weave patterns*  
*Clasped Weft rugs*

*Twill*  
*Rose bath*

*Beautiful motifs*

The book includes the most popular designs of the Mallikerta published after 2015 (in Finnish).

Two shaft is enough to weave many different rag rug patterns. With two shaft rib weave you can have stripes lengthwise and crosswise. Rib weave is also best for clasped weft rugs.

Snowflower, Leaflet and Rosette rugs with their variations are fun to watch and weave. In the rugs for recycling you can weave your yarn stash and wefts still waiting for the use.

Finish the rug with meticulously and beautiful manners. Fringes, woven borders, braids and even crocheted warp ends can be found from the book.

The book contains patterns that have been published in the magazine since the previous Rug pattern book Kankaankutojan mattokirja. 180 pages. Price 28,70 €

**The new rug pattern book is out on 30 November**

[www.mallikerta.fi](http://www.mallikerta.fi)



*Summer and winter weave*

*Tips for finishing*

#### WOVEN RUGS ON DISPLAY

Rugs of the new pattern book and a lot of other patterns are on display in our weaving studio.

Welcome on Mondays, Tuesdays, Thursdays on 22 November - 9 December at 10 a.m. - 16 p.m. + on 11 December at 10 a.m. - 14 p.m. extra Saturday! Other days by agreement.

Mallikerta MH  
Vanhamaantie 3 - 5  
47200 ELIMÄKI  
Tel. 040 1702007





## Weaver's Library

### KANKAANRAKENTAJAN OPAS

This guide (in Finnish) for dressing a loom is a popular textbook on the practical work involved in weaving. The guide includes clear instructions for winding the warp, beaming and tying up the treadles, and tips for actual weaving. 52 pages. A basic guide to keep by your loom. Price €15.80



## THE DIGITAL SUBSCRIPTION

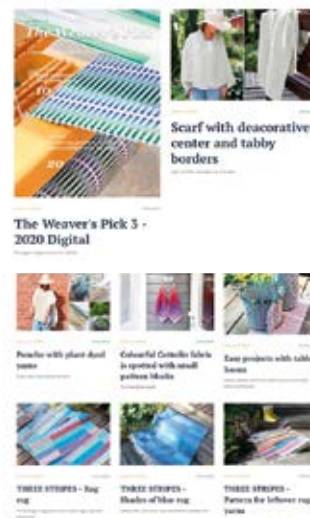


## DIGITAL MAGAZINE

The issues of your digital subscription appear on the page "MAGAZINE" under "Your own subscription archive".

By clicking on the issue of the magazine, you can open the specific digital magazine.

Digital magazine includes the ONLINE MAGAZINE. The magazine can be opened from the link on each weaving pattern.



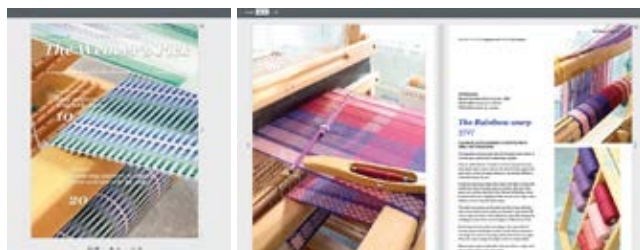
## WEAVING PATTERNS

In the digital magazine, you can view the pattern quickly and conveniently on screens of all sizes. The digital pattern includes the same information as the printed magazine, also the drafts.



From "OPEN THE MAGAZINE" you can open the online magazine.

## ONLINE MAGAZINE



## REED CONVERSION

Metric	Imperial
Dents per 10 cm	Dents per Inch
60	15
50-45	12
40	10
30	8
25	6
20	5

There are small inaccuracies in the conversions from metric unit reeds to imperial units reeds.

## UNITS

1 inch (") = 2,54 centimetres (cm)  
 1 yard (yd) = 0,914 metres (m)  
 1 ounce (oz) = 28,35 grams (g)  
 1 pound (lb) = 0,454 kilograms (kg)

1 cm = 0,394"  
 1 m = 1,094 yd  
 1 g = 0,035 oz  
 1 kg = 2,205 lb

## YARNS

Lankava Oy (06) 434 5500  
[www.lankava.fi](http://www.lankava.fi)  
 Lappajärven Värjäamo Oy 040 838 5449  
[www.lappajarvenvarjaamo.fi](http://www.lappajarvenvarjaamo.fi)  
 Poppanavakka Oy (03) 2525811  
[www.poppanavakka.fi](http://www.poppanavakka.fi)  
 Garnhuset i Kinna, Ruotsi  
[www.garnhusetkinna.se](http://www.garnhusetkinna.se)





*In the next  
issue..*

We managed to beat quite many colours in our new rug pattern. Colourful rug welcomes the spring!

## **The spring issue 1/2022 is out in February**

***www.mallikerta.fi***

On our website, you can order single issues or subscribe to the full volume of the Weaver's Pick magazine, or order back issues from previous years. If you wish, you can also order the guidebooks (in Finnish).

Please make sure to let us know your new address. You can contact us by sending an email, via the website or by using the form.

### **SUBSCRIPTION PRICES**

Full year 2022:  
Europe 2022 €46,30 /Four issues  
The rest of the world 2022 €52,10 /Four issues

The full year subscription includes four issues.  
The invoicing period is a full year. A continuing subscription will automatically continue the following year. The digital form is included in the subscription.

### **SUBSCRIBER SERVICE**

Contact information: Mallikerta MH  
Vanhamaantie 3-5 A6, 47200 ELIMÄKI, FINLAND  
theweaverspick@mallikerta.fi  
www.mallikerta.fi  
Tel. +358 40 170 2007 (Mon-Fri 9:00-17:00)  
Publisher: Mallikerta MH



## **The Weaver's Pick**

*A magazine full of ideas for weavers*

**Mallikerta MH**  
Vanhamaantie 3 - 5 A 6  
47200 ELIMÄKI  
FINLAND

Standard  
postage

I WOULD LIKE TO SUBSCRIBE TO  
the Weaver's Pick magazine

for myself  as a gift

**VOLUME 2022**  
(1-4/2022) subscription to Europe €46,30

**VOLUME 2022**  
(1-4/2022) subscription outside Europe €52,10

My new address as of \_\_\_/\_\_\_2021

I wish to cancel my subscription at the end of the period I  
have paid for.

### **SUBSCRIBER/NEW ADDRESS**

\_\_\_\_\_  
Name

\_\_\_\_\_  
Street address

\_\_\_\_\_  
Postal code and town/city

\_\_\_\_\_  
Telephone

\_\_\_\_\_  
Email

### **RECIPIENT OF A GIFT SUBSCRIPTION/MY OLD ADDRESS**

\_\_\_\_\_  
Name

\_\_\_\_\_  
Street address

\_\_\_\_\_  
Postal code and town/city

\_\_\_\_\_  
Telephone

\_\_\_\_\_  
Email



# *The Weaver's Pick*

*A magazine full of ideas  
for weavers*



## *Follow us on sosial media!*



[instagram/mallikerta](https://www.instagram.com/mallikerta)



[facebook.com/mallikerta](https://www.facebook.com/mallikerta)



[pinterest.com/mallikerta](https://www.pinterest.com/mallikerta)

[www.mallikerta.fi](http://www.mallikerta.fi)  
[www.theweaverspick.com](http://www.theweaverspick.com)

### SOFT LOOPED MOHAIR YARN SCARF

We have a surprice in this infinity scarf. We used macramé knots to tie the scarf into a tube. The scarf is woven in a small table loom, which was perfect for this project.

