

Digi *mallikerta*

The Weaver's Pick

Ideas for weavers

Summer 1 | 2023

Double cloth project on table loom

WEAVE A CHAIR CUSHION

LIQUORICE

Hot pads

Oven cloths

Table runner

Wall hanging

Woven to fit

PRECISE RUG



DESIGN OF PATTERN **Marjatta Hirvi** WEAVER **Marjatta Hirvi***Hot pads 8 kpl**Long hot pads 2 kpl**Wall hanging 1 kpl**Oven cloths Marble 2 kpl**Table runner Piano 1 kpl**All patterns are woven into a same 10 m warp, and the warp is cut off once during weaving.*

Liquorice 3805

The warp 18-bly cotton twine Liina, 1 kg = 1 680 m,
 tex 30x18,
 Warp width 21,7 cm
 the sett 10 ends/cm
 number of warp ends 217
 length 10 m
 amount of warp yarn needed 1360 g

Reed 2 per dent in a 50-dent reed (metric) = 50/2
 Structure Warp-faced rep

FINISHING FOR ALL THE PATTERNS

Sew the ends of all pieces with 3-step zigzag stitches. Cut the pieces apart. Sew the hems with a machine or by hand. The height of the hem when ready is 2 cm.

Wash the hot pads and wall hanging in lukewarm water. Use a liquid washing detergent, rinse with plenty of water. Washing compacts the structure.

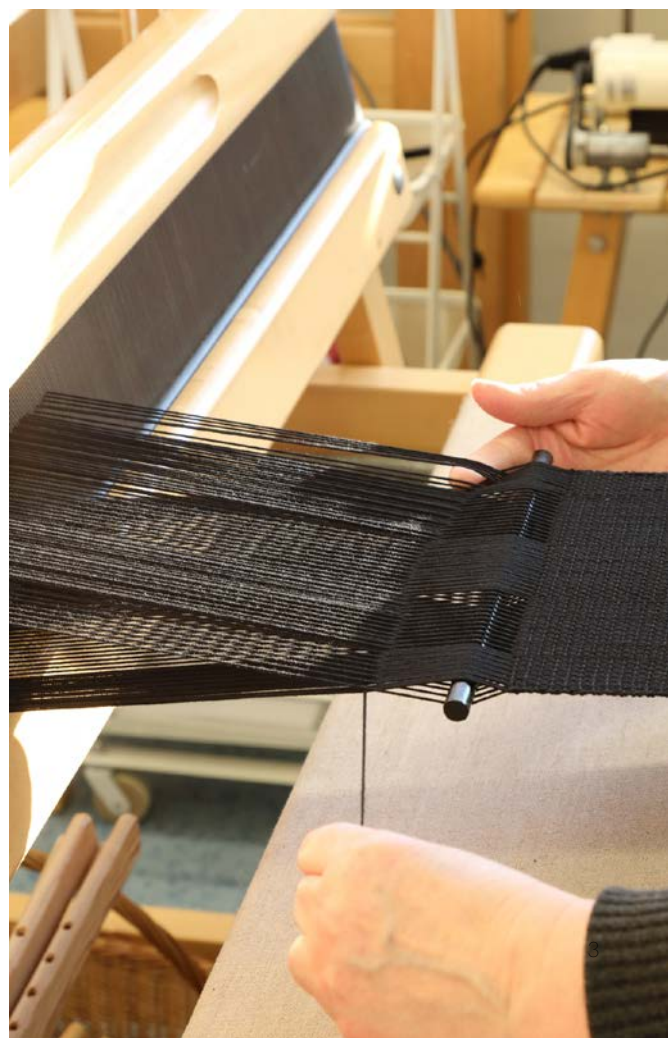
Hot pads

Short hot pad 24,5 x 27 cm

Long hot pad 24,5 cm x 49 cm

BEFORE WEAVING

Paint the pine wood full round mouldings with black furniture paint and let them dry. Cut 24.5 cm long sticks from the mouldings. Sand the ends and paint them. Tip: Cutting the mouldings into sticks can be done easily with a miter box. ▶





WEAVING INSTRUCTIONS

Begin and end with a 5 cm hem using only 18-ply cotton twine (5 cm = 17 wefts). Weave the main section according to the treadling instructions using 18-ply cotton twine and round wooden sticks. Ensure that the selvedge thread is always secured. In this case, the second weft is a wooden stick, so the cotton twine weft goes either under or over it.

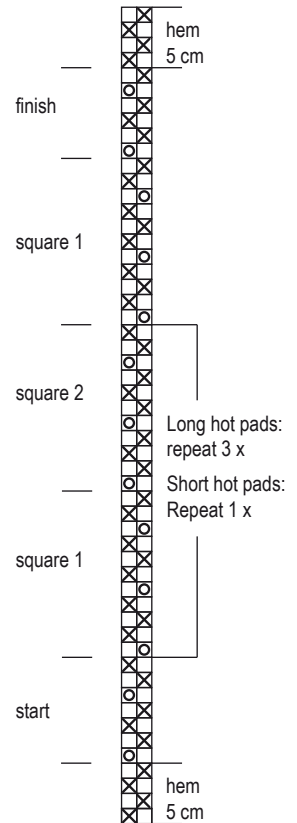
The woven length of the short hot pad is 29 cm + 10 cm for hems = 39 cm, and for the long hot pad, it is 48 cm + 10 cm for hems = 58 cm.

AMOUNT OF WEFT YARN NEEDED FOR A SHORT HOT PAD

18-bly cotton twine Liina, 1 kg = 1 680 m, tex 30x18
 black 10 g
 Pine wood full round moulding 10 mm, black
 13 pieces of sticks with a length 24,5 cm = 3,19 m

AMOUNT OF WEFT YARN NEEDED FOR A LONG PAD

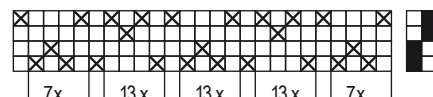
18-bly cotton twine Liina, 1 kg = 1 680 m, tex 30x18
 black 16 g
 Pine wood full round moulding 10 mm
 25 pieces of sticks with a length 24,5 cm = 6,13 m



LIQUORICE - HOT PADS

× = 18-ply cotton twine, black
 ○ = round wood stick

Threading is on four shafts for the purpose of allowing space for warp threads to move. If the warp is less dense, the weave can also be done with two shafts. In that case, combine the threads of the first and second shafts onto one shaft, and the threads of the third and fourth shafts onto another shaft.



1 28 1 52 1 52 1 52 1 28 217 ends in total

Reed: 2 per dent in a 50-dent reed (metric). Only one thread remains in the selvage dent because the number of warp ends is odd.

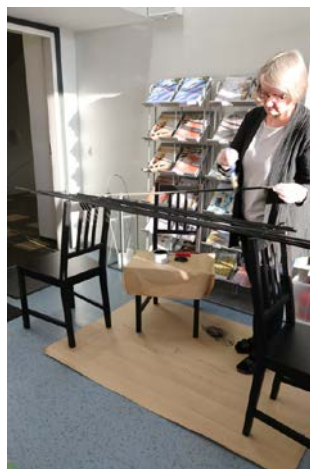
How to weave hot pads with wooden sticks

1. Paint the round pine wood mouldings with furniture paint. Place the mouldings, for example, between chairs. Protect the environment well. Let them dry and paint the mouldings for a second time.
2. Cut the mouldings to the required length, in this pattern it is 24.5 cm. Use a miter box to achieve straight and even ends. Use a coping saw designed for cutting moldings. Using a regular saw will result in an uneven cut surface.
3. Sand the ends of the wooden sticks. You can achieve straight end by placing sandpaper on the table and rotating the stick's end on it.
4. Place the sticks, for example, in pots and paint the ends of the sticks. At the same time, you can inspect and touch up the paint on the sticks. Let them dry thoroughly.

Weave tightly! The warp is very dense, so the shed may not always open smoothly. You can open the shed with the shuttle edge or a wooden stick before throwing the weft.

The weft threads thrown after the wooden sticks easily become loose at the edge. Pull the weft yarn so that it remains straight (in the previous shed). Throw the weft and open the next shed, which will hold the weft yarn at the fabric's edge. Beat the weft to secure it.

You can also weave with unpainted round mouldings.



Tip

Secure the thrown weft yarn in place by pressing the edge of the fabric from underneath with your finger after beating the weft. This way, the yarn will not loosen in the shed.



Wall hanging

Finished size 45 x 134 cm

PREPARATIONS AND WEAVING

Cut 45 cm long sticks from the full round mouldings. Sand the ends. Tip: Cutting the round moulding works well with a miter box.

Weave a 5 cm hem at the beginning and end using only 18-ply cotton twine. Weave the wall hanging with 18-ply cotton twine and wooden sticks according to the treadling instructions. The woven length is 145 cm + hems of 5 cm each.

AMOUNT OF WEFT YARN NEEDED

18-ply cotton twine Liina, 1 kg = 1 680 m, tex 30x18

black 55 g

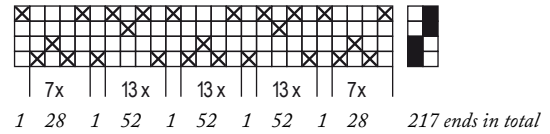
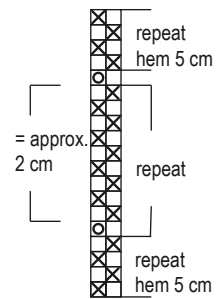
Pine wood full round moulding 10 mm

38 pcs pieces of sticks with a length 45 cm = 17,1 m ▶

LIQUORICE WALL HANGING

× = 18-ply cotton twine, black

○ = round wood stick







Marble oven cloths

Finished size 22 x 26 cm

Weave a 5 cm hem at the beginning and end using only 18-ply cotton twine. Weave an oven cloth with 18-ply cotton twine and Tube Yarn, along with different types and colors of yarn in the same shed. Wrap the yarns onto their own shuttle. Throw the Tube Yarn into the shed first, followed by the yarn weft. Wrap the yarn weft around the Tube yarn a couple of times. Throw the weft in a way that always catches the edge thread of the warp.

Create a loop at the beginning and end of the oven cloth using Tube Yarn weft and multiple yarn weft:

Throw the Tube Yarn and yarn weft into the same shed, leaving their ends about 20 cm beyond the edge.

Divide the yarn weft into two parts and braid them with the Tube Yarn. Measure the required length for the loop + finishing, cut off the excess portion, and thin out the end of the Tube Yarn. Open the same shed where you threw the weft and thread the end back into the shed, twisting it around the edge thread. Open the other shed and tightly beat the weft in place. Throw the cotton twine weft and beat it tightly.

The woven length is 25 cm + hems á 5 cm.



Recycle

Add your leftover yarn scraps to the weft. Wrap the yarns onto the shuttle and throw them into the same shed with the rug yarn.

This way, you will create loops in the oven cloth: Braid the rug yarn and the yarn weft together and thread them back into the shed, twisting them around the edge thread.



AMOUNT OF WEFT YARN NEEDED, 2 pcs

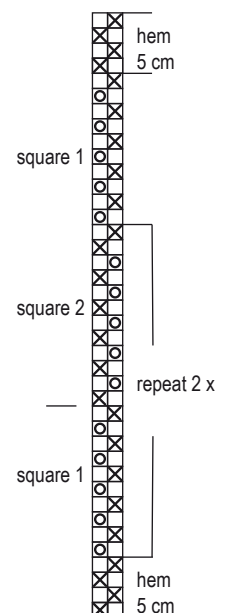
18-bly cotton twine Liina, 1 kg = 1 680 m, tex 30x18

black 15 g

Lilli Tube Yarn, Lankava

natural white 54 g

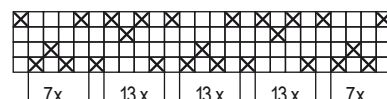
various yarns approx. 30 g ▶



MARBLE oven cloths

× = 18-ply cotton twine, black

○ = Tube Yarn + threads



1 28 1 52 1 52 1 52 1 28 217 ends in total

Weave a small table runner to the end of the warp



Weave the warp to the end with a small cloth using rug yarn! You can quickly remove the warp from the loom and admire the woven pieces.

Piano table runner

Finished size 21 x 55 cm

Weave a 5 cm hem at the beginning and end using only 18-ply cotton twine. Weave the table runner with 18-ply cotton twine and Tube Yarn according to the treadling order. The woven length is 58 cm + hems á 5 cm.

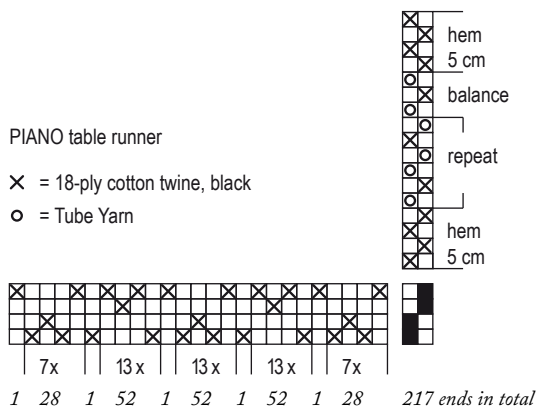
AMOUNT OF WEFT YARN NEEDED

18-bly cotton twine Liina, 1 kg = 1 680 m, tex 30x18

black 7 g

Lilli Tube Yarn, Lankava

natural white 88 g ●





DESIGN OF PATTERN **Marjatta Hirvi** WEAVER **Marjatta Hirvi***Finished size 70 x 249 cm + fringes*

Precise rug 3806

The warp 18-ply Cotton twine Liina, tex 30x18,
1 kg = approx. 1 680 m

Warp width 70,9 cm
the sett 8 ends/cm
number of warp ends 567 + 2
length 3,8 m (one rug)
amount of warp yarn needed 1260 g

Reed 2 per dent in a 40 dent reed (metric) = 40/2
Structure Warp-faced rep

RUG ENDS

The finishing method for the rug ends should be considered before starting the weaving. With knotted warp ends, there would be a lot of large knots at the ends of this rug, so the finishing needs to be done in other ways.

In this rug, a hem has been woven with 18-ply cotton twine, which is simply folded and sewn in place.

Other finishing methods for the ends of this rug pattern are:

- Weave a narrow 1 - 1.5 cm hem with cotton twine and sew it with a straight stitch twice along the edge. The cotton twine end can be even shorter, but it is recommended to weave it longer and remove threads during finishing. Fringes will remain at the ends of the rug.
- Sew carpet binding tape to the ends. In this case, weave a narrow hem and sew it with a zigzag and straight stitch along the edge. Trim the warp threads to 1-1.5 cm in length and sew the carpet binding tape in place.
- Weave an approximately 4 cm hem with cotton twine. Sew a zigzag stitch along the edge of the hem. Fold the warp ends over the hem and sew a straight stitch over them. Cut the warp ends short. Fold the raw edge and sew the hem in place.

WEAVING INSTRUCTIONS

Leave approximately 10 cm fringe allowance on both ends of the warp. Weave a 2.5-3 cm hem at the beginning and end of the work using only 18-ply cotton twine. There should be a minimum of 2.5 cm of dense fabric to ensure successful finishing. At the end of the rug, after weaving the hem, make a few weft throws with thin yarn. ▶



*Especially thin
and lightweight
rug*

The warp is so dense that it requires as many threads as three regular rug warps!



The rug is designed for a narrow and long utility kitchen. There is a lot of traffic and door openings in the space, so the rug needs to be easily washable, thin, lightweight, warm, and stay securely in place.

As often happens in the design process, one pattern leads to another. I wove the Liquorice patterns with tube yarn as the last piece on the loom, and that design came to mind when planning this rug. If I were to switch from tube yarn to fluffy yarn, I would create a thin yet warm rug. Time to take action and start warping.



Beat the weft tightly against the edge of the fabric. This will hold the threads of the hem in place.
 Weave the rug according to the treadling instructions using fluffy Frotee yarn and 18-ply cotton twine. There are two checkered patterns at the ends of the rug, while the rest of the rug is the same pattern throughout.
 The weft density is 2 picks of Frotee yarn + 1 pick of cotton twine per centimeter. The woven length is 263 cm + hems of 2.5 cm each.
 The finished rug weighs 2.53 kg.

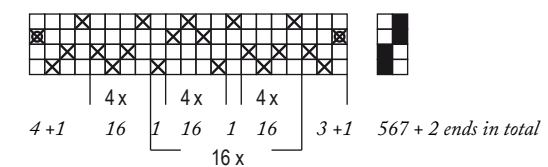
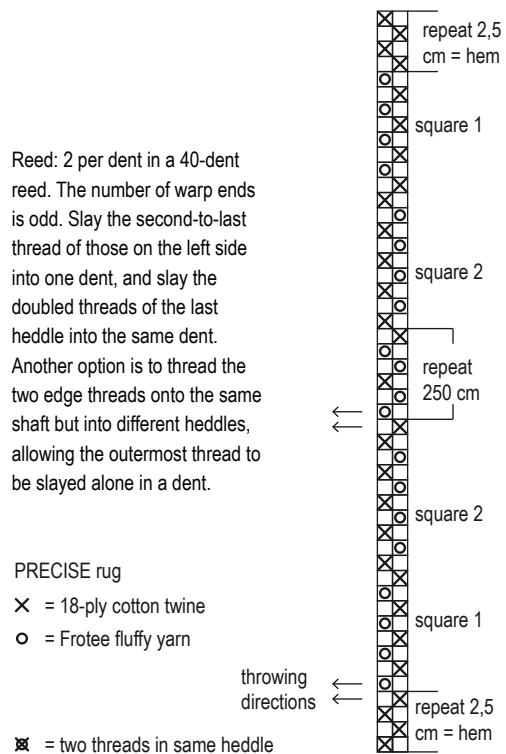
AMOUNT OF WEFT YARN NEEDED

Frotee Loopy Craft Yarn, 1 kg = approx. 235 m, Lankava 961 frosty grass 1380 g
 18-ply Cotton Twine Liina, tex 30x18, 1 kg = 1 680 m natural white 130 g

The warp has been threaded onto four shafts, even though the pattern could be woven using only two shafts. This is because with such a dense warp, the sheds wouldn't open well when using only two shafts. The same pattern can be achieved by threading the warp threads of shafts 1 and 2 on the same shaft, and the threads of shafts 3 and 4 on another shaft. ●

Give it a try

You can also weave with different rug yarns on the same warp. By switching from fluffy yarn to smooth tube yarn or tricot yarn, the patterns become clearer. The rug will still remain lightweight and thin. A rug woven with rag yarn is ultra-lightweight. On the other hand, you can also experiment with very thick yarns on the warp. You can also weave the rug in a checkered pattern. In that case, weave the square 1 and 2 throughout the entire length of the rug.





EDGES

The outermost warp thread is doubled on both edges. Throwing directions are marked in the treadling order. While weaving, it is necessary to occasionally twist the previous weft either above or below in order to secure the outermost warp thread. By trying it out, you will see from which side. The twists always occur at the same point in the weaving, so they become automatic after the beginning.

Tip

When the fringes start to unravel in use, comb the warp threads completely open and trim them shorter. This way, you will create a 'pile row' at the ends of the rug. In the picture, the extra threads are added underneath the rug only for the purpose of illustrating the idea.



How to finish the ends of the Precise rug

1. Weave a tight edge with cotton twine.
2. Sew a straight stitch right at the edge of the cotton twine edge. If there are loose threads hanging from the edge, leave them outside the seam.
3. Fold the edge two times so that the warp threads are facing away from the rug. Sew the fold from the top with a straight stitch. If you have woven a longer edge, the fold will be wider, allowing you to sew a straight stitch on both sides of the fold.
4. Trim the fringes. In this case, the length of the fringes are 7 cm.



1.



2.



3.



4.





Set up the looms on the table and start weaving!

Table looms are convenient because you can quickly change the weave structure. You can weave tabby, twill, satin, or even double weave on the same warp. The commonly used straight threading on table looms is practical as it allows for all these weave structures, but the threading can be any other type depending on the desired weave.

In my table loom, I had the end of a cotton twine warp, and I wove a chair cushion using a double cloth weave. You can try double cloth with various types of warp, as long as you choose a weft that suits the sett of the warp.

The warp for this double weave chair cushion is a 12-ply cotton twine with a sett of 3 ends/cm. Each layer of the fabric has 1.5 ends/cm, which means the weft needs to be thick. I wove the chair cushion using a rug weft. If your warp, for example, is a 6-ply cotton twine with a sett of 4 ends/cm, you can try using this same Tube Yarn weft, mop yarn, or even multiple strands of wool yarn as the weft.

If you want to weave with thinner yarns or thin fabric strips, a good warp sett would be 8 ends/cm (= 4 ends/cm per layer), 2 ends per dent in a 40-dent reed. The warp thread can be, for example, a 6-ply cotton twine, or you can use another thin yarn doubled. In the picture left, the green oven cloth has a 6-ply cotton twine as the warp and cotton yarn as the weft. ▶

There are two layers of fabric in the double weave. If you have a 40-dent reed on your loom and one thread in each dent, then there will be only 2 threads per centimeter in one layer of fabric in double weave.





Finishing the tube weave is convenient. Fold the edges of the fabric into the selvage and sew the opening closed.

Remove one thread from the edge of the warp!



Make one small adjustment before starting to weave the double weave: Take the outermost warp thread from the other edge completely out of use. Otherwise, the edge will not bind properly. This is done when the threading is a straight draw on four shafts, as in this instructions. The warp must have an odd number of threads for the pattern to continue correctly at the edge turning point.

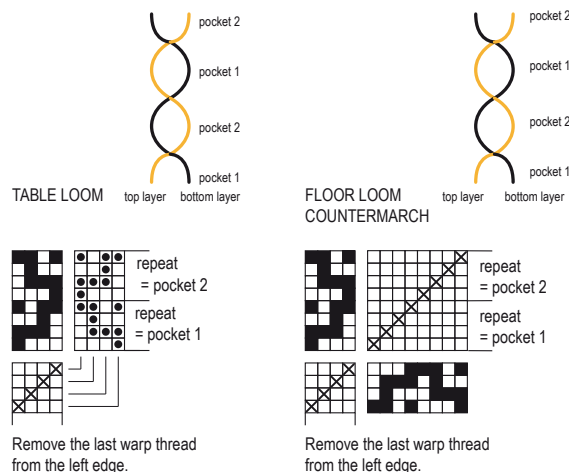


You can weave double weave on a four-shaft table loom. With regular floor looms, you will need four shafts and eight treadles.

How to read a weaving draft for table looms

The weaving draft on the right: Lift the shafts indicated by each weft pick. First weft: the rightmost square, the marked lever = the first shaft. Second weft: three rightmost levers = the three front shafts, and so on. The weaving draft is marked with lines indicating which levers and shafts are connected to each other. In some looms, they may be connected in the opposite order as well.

When weaving on a direct-action tie-up loom, such as Varpapuu Polar looms or other similar direct tie-up looms, you can follow the weaving darfts for the table loom. In a direct tie-up, only one cord goes from one shaft to one treadle. Each shaft moves independently, similar to table looms. Instead of lifting the levers on table loom, you press the treadles that correspond to the desired shafts.



You can also weave using a counter-march loom weaving draft on table looms. Lift the shafts that are marked in the tie-up with the treadle currently in use = in the up position. The first mark is at the leftmost treadle, and in the tie-up, the mark is at the front shaft = lift the front shaft, and so on. Re-mark the draft to make it suitable for table looms, making it easier to follow.



DESIGN OF PATTERN **Marjatta Hirvi** WEAVER **Marjatta Hirvi**

Chair cushions on table looms
Finished size 34 x 43 cm

Snippet 3807

The warp 12-ply Cotton twine Liina,
 1 kg = approx 2 560 m, tex 30x12,
 Warp width 40 cm
 the sett 3 ends/cm
 number of warp ends 120
 length 2,8 m
 amount of warp yarn needed 130 g

Reed 1 per dent in a 30-dent reed (metric) = 30/1
 Structure Double weave

WEAVING INSTRUCTIONS

Leave around 5 cm for tying knots at both ends. Weave 3 cm for the inside allowance at the beginning and end of the work using Minimop Cotton. Finish the ends of the seat cushion neatly by folding the fabric edges inside the tube. Note that regular plain weave closes the tube, so the folding allowance should also be woven as a tube fabric.

Weave pockets measuring 8.5 cm in height according to the treadling instructions using Lilli Tube Yarn (measured with the warp tightened). Weave 5 pockets in total. Leave the first and last pocket of the seat cushion empty, but fill the rest with stuffing or felt fabric during weaving.

Woven length: 47 cm + folding allowances of 3 cm at the ends.

AMOUNT OF WEFT YARN NEEDED

Lilli Tube Yarn, 1 kg = approx. 220 m

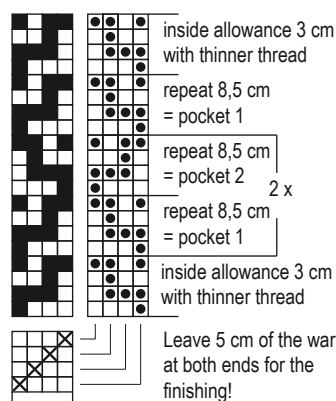
21 lion yellow 305 g

Minimop Cotton Twine, approx. 0,7 kg = 490 m (Ø 2,5 mm)
 natural white 40 g



Weaving draft
 for counter-
 march floor loom
 on page 15

CHAIR CUSHION



Remove the last warp end from the left edge!

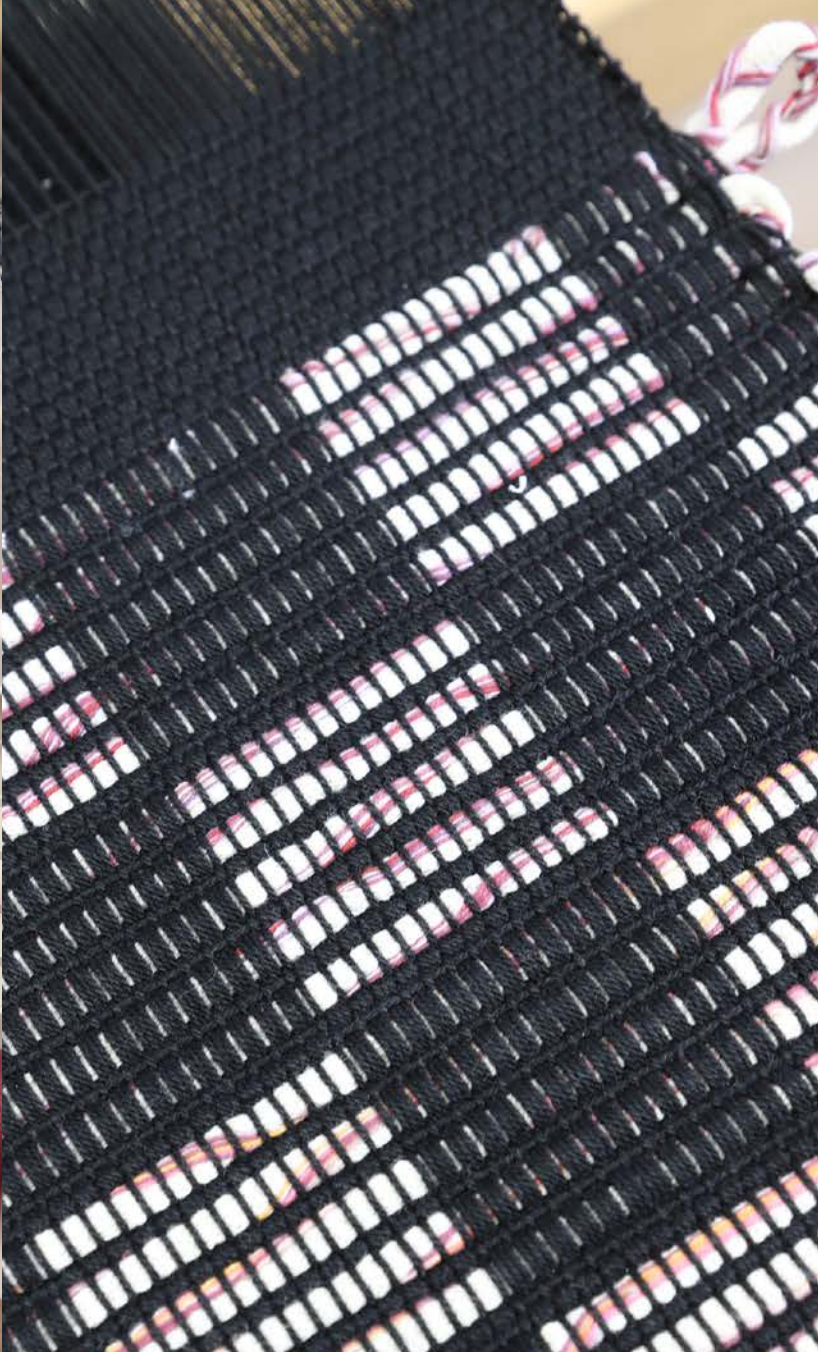
FINISHING

Tie square knots with 1 + 1 thread. Place the filling inside the tube pocket. Leave around 1 cm of the woven section visible with Minimop Yarn, or fold it completely inside to hide it from view. Sew the opening closed with a suitable color of 6-ply cotton twine or similar strong thread. ●



The Weaver's Pick

*A magazine full of ideas
for weavers*



Follow us on social media!



[instagram/mallikerta](https://www.instagram.com/mallikerta)



[facebook.com/mallikerta](https://www.facebook.com/mallikerta)



[pinterest.com/mallikerta](https://www.pinterest.com/mallikerta)

www.mallikerta.fi

www.theweaverspick.com

EDITOR
PATTERNS
PUBLICHER

Marjatta Hirvi
Marjatta Hirvi
Mallikerta MH

CONTACT INFORMATION

Mallikerta MH
Salpausselänkatu 57, 45100 Kouvola

CUSTOMER SERVICE

theweaverspick@mallikerta.fi
toimitus@mallikerta.fi

The commercial use of the weaving patterns is forbidden and the sharing of patterns online is forbidden.

The magazine accepts no responsibility for any typographical errors or other inaccuracies in the content that may cause our readers inconvenience, loss of working time or financial damage.